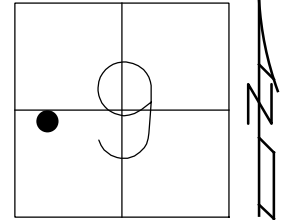


O.D.O.T. DISTRICT 2 SURVEY OFFICE (USE ONLY)

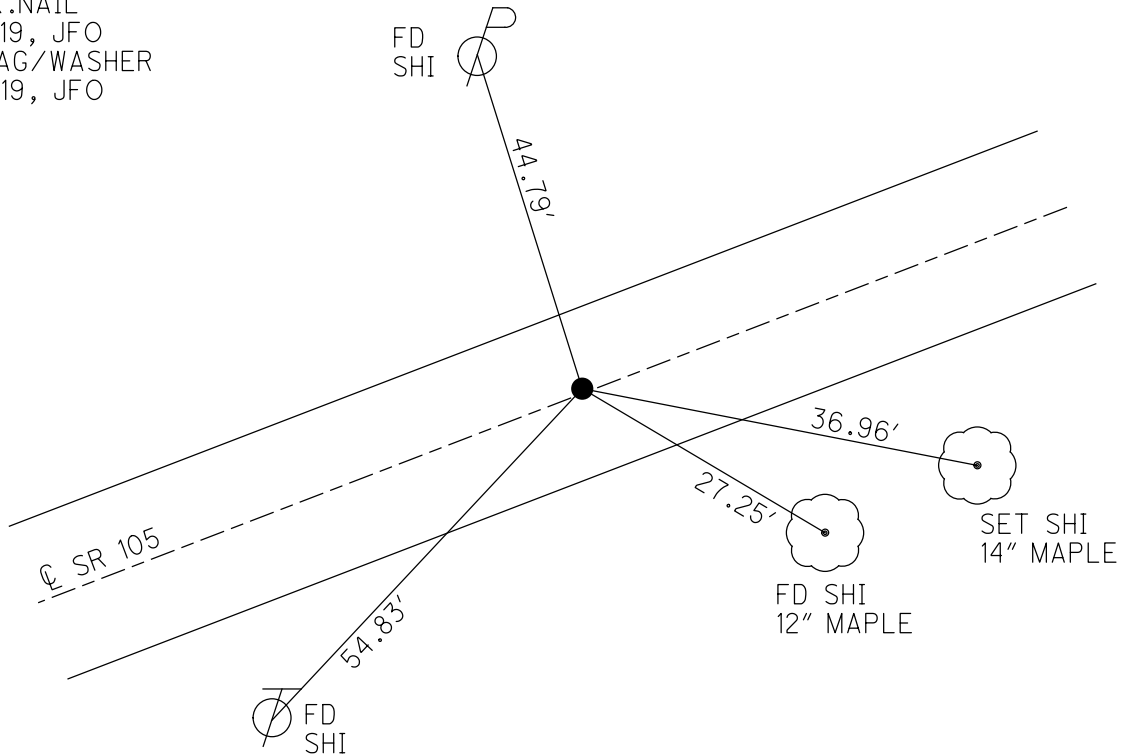
PERSONNEL _____ REFERENCE NO. 58 A SHEET 38 OF 63
 NOTES RHOADES DATE 7/30/19 ROUTE SR 105
 H.C. O'DONNELL WEATHER PARTLY CLOUDY COUNTY OTTAWA
 R.C. MILLER TEMP. 75° TOWNSHIP HARRIS
 DWG BY BALBAUGH PID 92131 SECTION 9
 T 6 N R 14 E

TYPE MONUMENT P.K.NAIL
 ON SURFACE - ~~BELOW~~ ON
 OFFSET ☉ PAVEMENT 0.5' LT : ~~RT~~
9.4' TO LT EDGE PAVEMENT
 STATION: 268+99.10

HORZ.DATUM: NAD83 2011 GEOID: 2012A
 GRID: NORTHING: 666713.916 EASTING: 1761146.737



RECORD:
 FD LG.R.R.SPIKE
 4/14/00, MC
 SET P.K./WASHER
 6/22/00, KPM
 FD P.K.NAIL
 REFA58
 4/19/18, JFO
 FD P.K.NAIL
 7/30/19, JFO
 SET MAG/WASHER
 12/10/19, JFO



O.D.O.T. DISTRICT 2 SURVEY OFFICE

PERSONNEL

REFERENCE NO. 58-A

SHEET 31 OF 96

NOTES K. Moser

H.C. M. CANTERBURY

DATE 4-14-00

ROUTE S.R. 105

R.C. M. BARNHISEL

WEATHER SUNNY

COUNTY OTTAWA

TEMP. +60°F

TOWNSHIP HARRIS

SECTION 9

T6N R14E

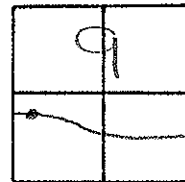
TYPE MONUMENT LG. RR SPIKE

ON ~~SURFACE~~ - BELOW 3" Below

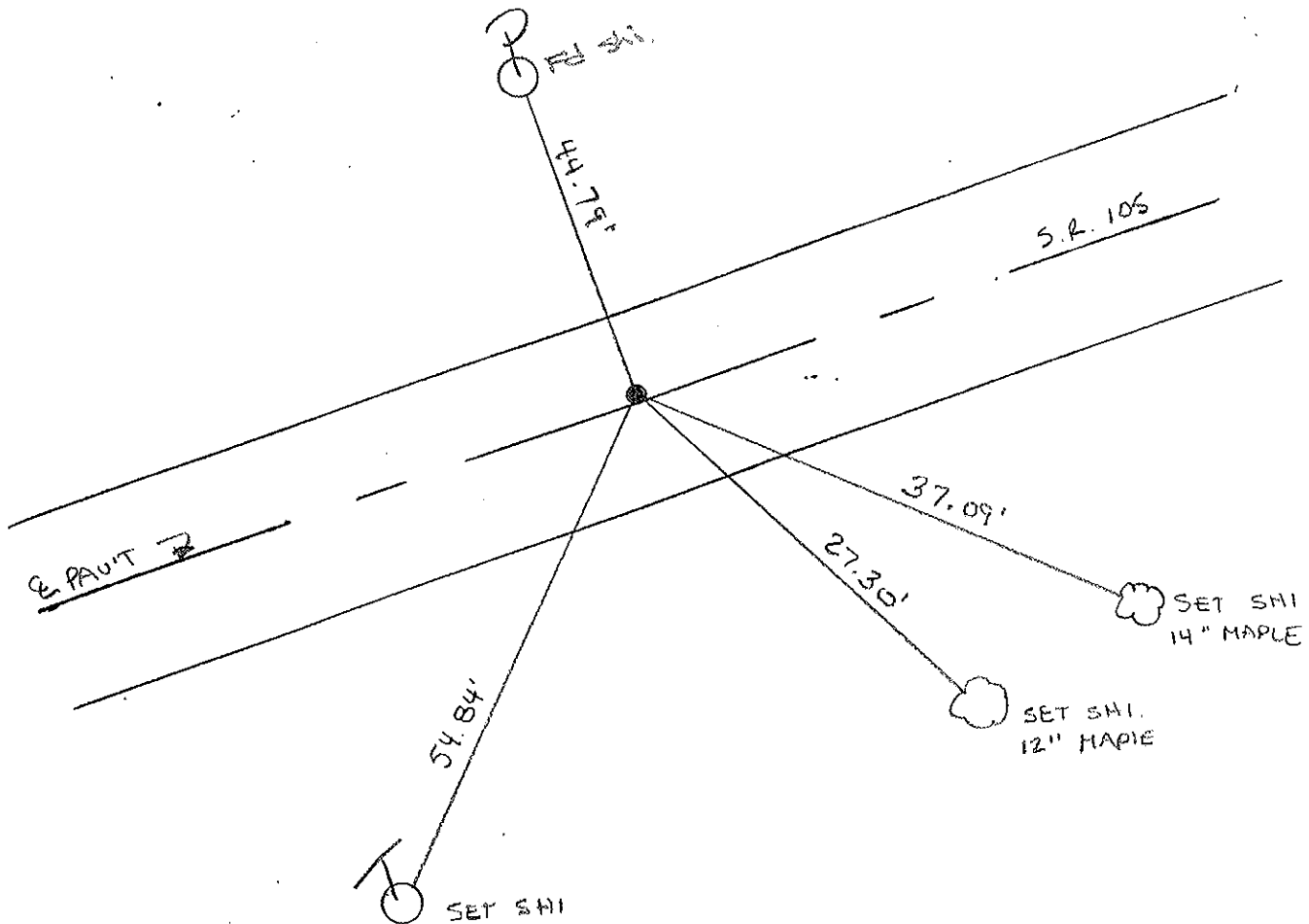
LEFT - ~~C PAV'T.~~ RIGHT 0.5 LT.

9.4 TO LT. EDGE PAVEMENT

S.L.M. 269+64



RESET PK/WASHER
 6-22-00
 K.P.M



PERSONNEL TITLE PERSONNEL TITLE
 Schneider _____
 Mosser _____
 Barbour _____

COUNTY Ottawa DATE 3-6-74
 S. R. 105 WEATHER Cloudy
 SEC. 9 TEMP. 45°

DESCRIPTION Harris Twp JOB NO. _____

