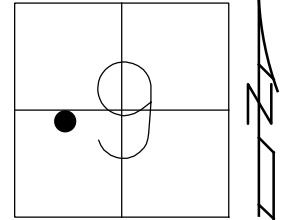


O.D.O.T. DISTRICT 2 SURVEY OFFICE (USE ONLY)

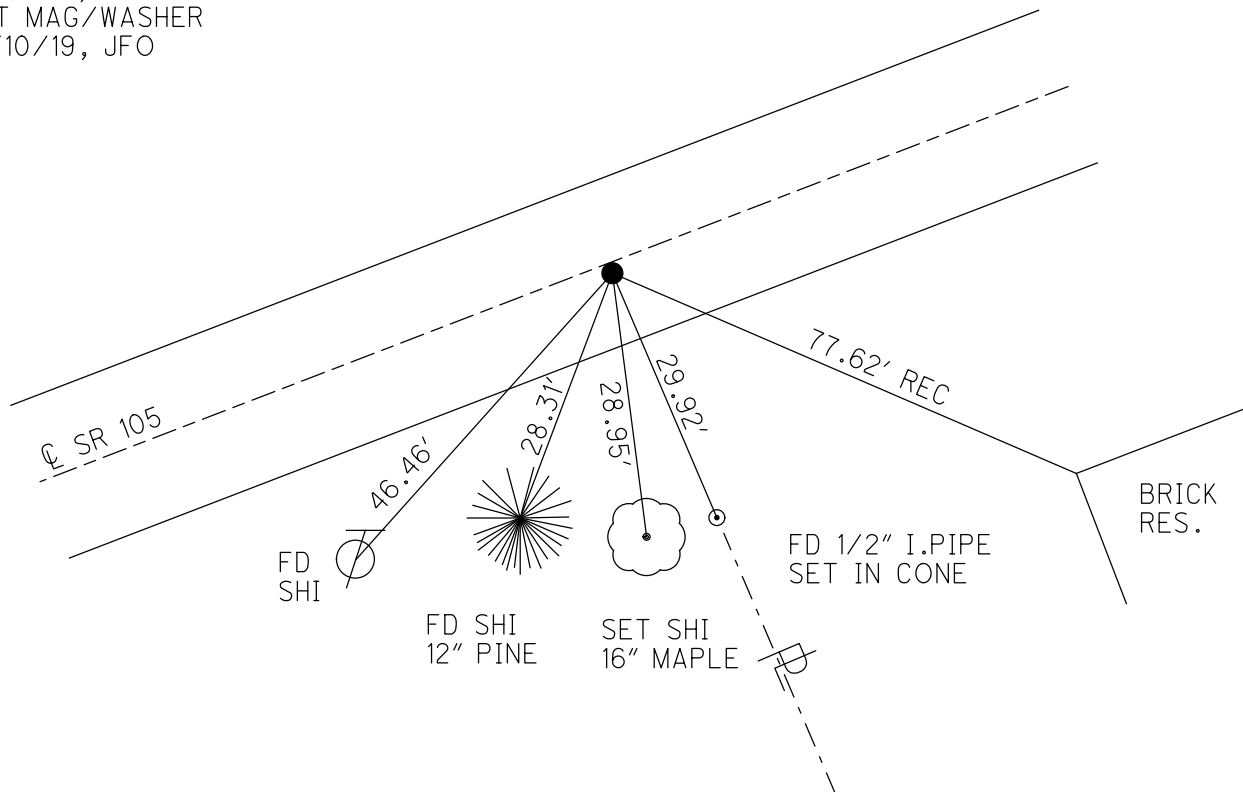
PERSONNEL _____ REFERENCE NO. 59 SHEET 39 OF 63
 NOTES RHOADES DATE 7/30/19 ROUTE SR 105
 H.C. O'DONNELL WEATHER PARTLY CLOUDY COUNTY OTTAWA
 R.C. MILLER TEMP. 75° TOWNSHIP HARRIS
 DWG BY BALBAUGH PID 92131 SECTION 9
 T 6 N R 14 E

TYPE MONUMENT P.K./WASHER
 ON SURFACE - ~~BELOW~~ ON _____
 OFFSET C PAVEMENT 1.2' LT : ~~RT~~
8.9' TO LT EDGE PAVEMENT
 STATION: 270+49.02



HORZ.DATUM: NAD83 2011 GEOID: 2012A
 GRID: NORTHING: 666704.935 EASTING: 1761296.380

RECORD:
 FD LG.R.R.SPIKE
 4/14/00, MC
 SET P.K./WASHER
 6/22/00, KPM
 FD P.K./WASHER
 REF59
 4/27/18, JFO
 FD P.K./WASHER
 7/30/19, JFO
 SET MAG/WASHER
 12/10/19, JFO



O.D.O.T. DISTRICT 2 SURVEY OFFICE

PERSONNEL

REFERENCE NO. 59

SHEET 32 OF 96

NOTES K. MOSER

H.C. M. CANTERBURY

R.C. M. BARNISEL

DATE 4-14-00

WEATHER SUNNY

TEMP. +60°F

ROUTE S.R. 105

COUNTY OTTAWA

TOWNSHIP HARRIS

SECTION 9

T6 N R 14 E

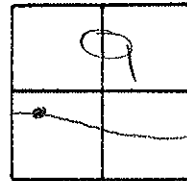
TYPE MONUMENT LG. R.R. SPIKE

ON SURFACE - BELOW SURFACE

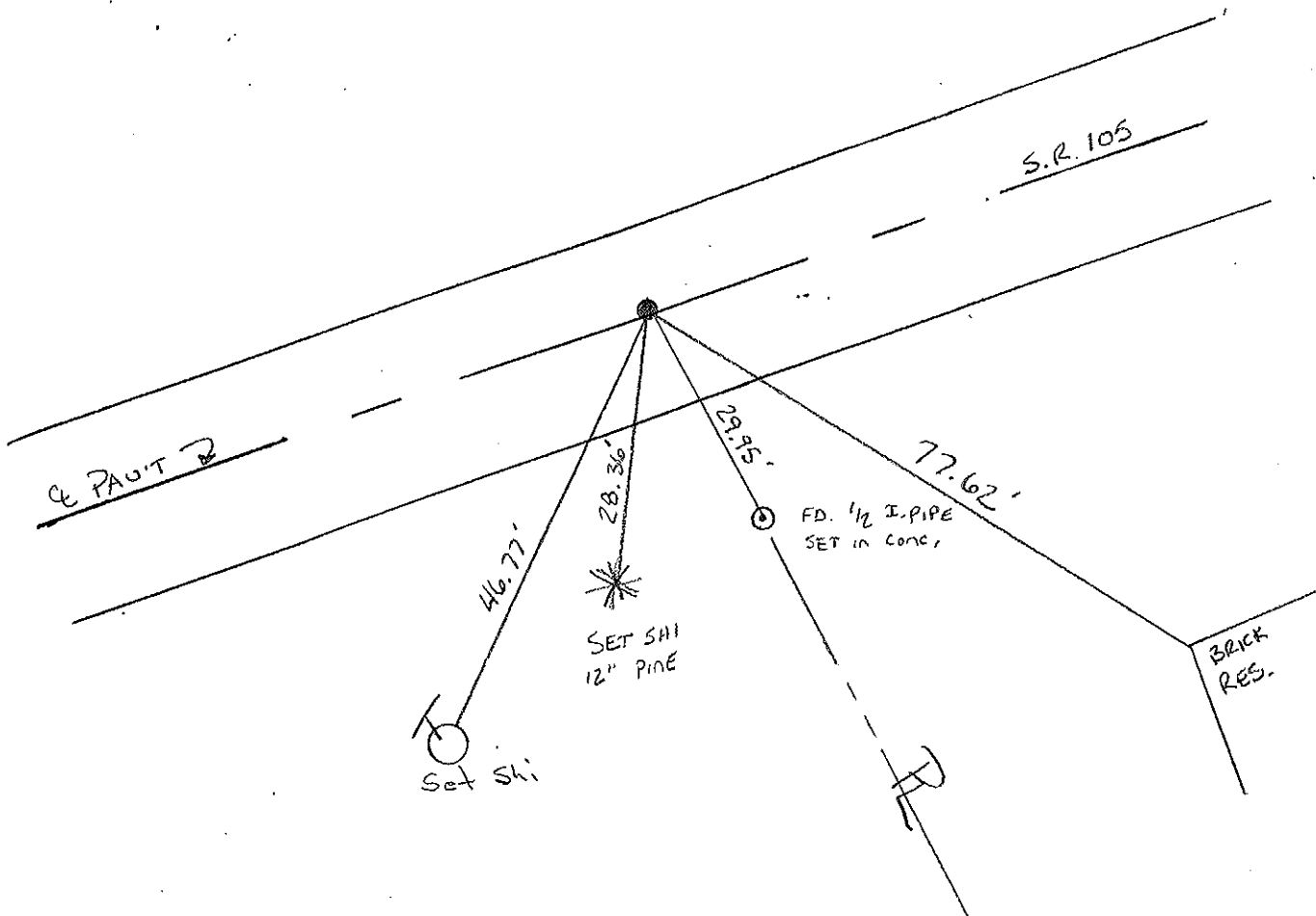
LEFT - C. PAV'T. - RIGHT 1.2 LT.

8.9 TO LT. EDGE PAVEMENT

S.L.M. 271 +14



RESET PL/WASHER
 6-22-00
 K.P.M.



PERSONNEL TITLE PERSONNEL TITLE
 Schneider _____
 Mosser _____
 Barbour _____

COUNTY Ottawa DATE 3-6-74
 S. R. 105 WEATHER Cloudy
 SEC. 9 TEMP. 45°

DESCRIPTION Harris Twp

JOB NO. _____

