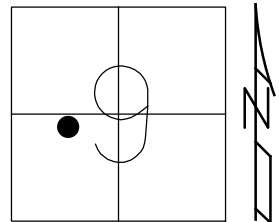


O.D.O.T. DISTRICT 2 SURVEY OFFICE (USE ONLY)

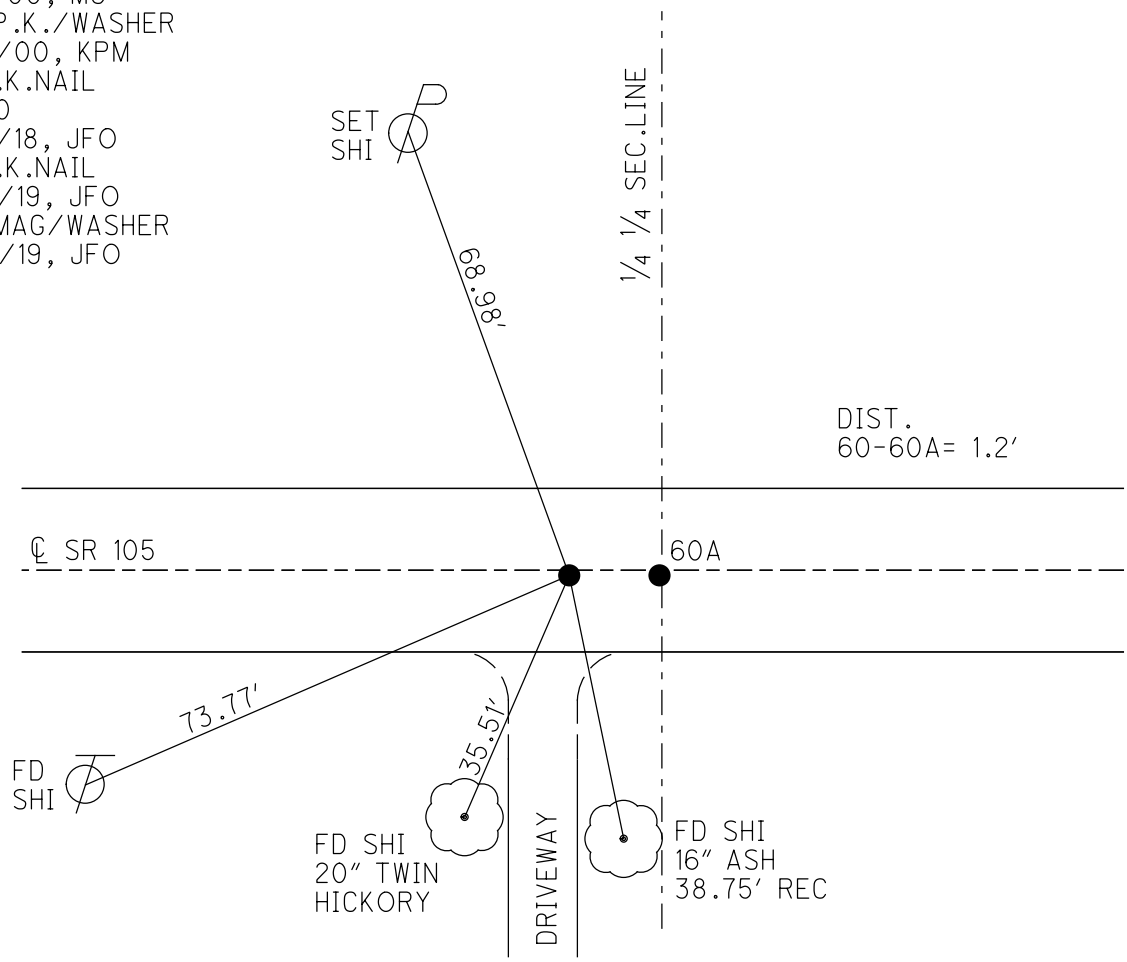
PERSONNEL _____ REFERENCE NO. 60 SHEET 40 OF 63
 NOTES RHOADES DATE 7/30/19 ROUTE SR 105
 H.C. O'DONNELL WEATHER PARTLY CLOUDY COUNTY OTTAWA
 R.C. MILLER TEMP. 75° TOWNSHIP HARRIS
 _____ SECTION 9
 DWG BY BALBAUGH PID 92131 T 6 N R 14 E

TYPE MONUMENT P.K.NAIL
 ON SURFACE - ~~BELOW~~ ON _____
 OFFSET ☉ PAVEMENT 0.5' ~~LF~~ : RT
10.0' TO RT EDGE PAVEMENT
 STATION: 272+26.18



HORIZ.DATUM: NAD83 2011 GEOID: 2012A
 GRID: NORTHING: 666694.490 EASTING: 1761473.227

RECORD:
 P.K.OVER R.R.SPIKE
 FD P.K./WASHER
 4/18/00, MC
 SET P.K./WASHER
 6/22/00, KPM
 FD P.K.NAIL
 REF60
 4/27/18, JFO
 FD P.K.NAIL
 7/30/19, JFO
 SET MAG/WASHER
 12/10/19, JFO



O.D.O.T. DISTRICT 2 SURVEY OFFICE

PERSONNEL

REFERENCE NO. 60

SHEET 33 OF 96

NOTES K. MOSER

H.C. M. CANTERBURY

DATE 4-18-00

ROUTE S.R. 105

R.C. M. BARNHISEL

WEATHER CLOUDY

COUNTY OTTAWA

TEMP. +55 °F

TOWNSHIP HARRIS

SECTION 9

T6 N R 14 E

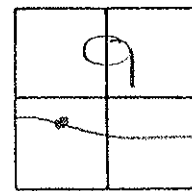
TYPE MONUMENT PK / WASHER

ON SURFACE - BELOW SURFACE

~~LEFT - C PAV'T.~~ - RIGHT A: 0.5' B: 0.6'

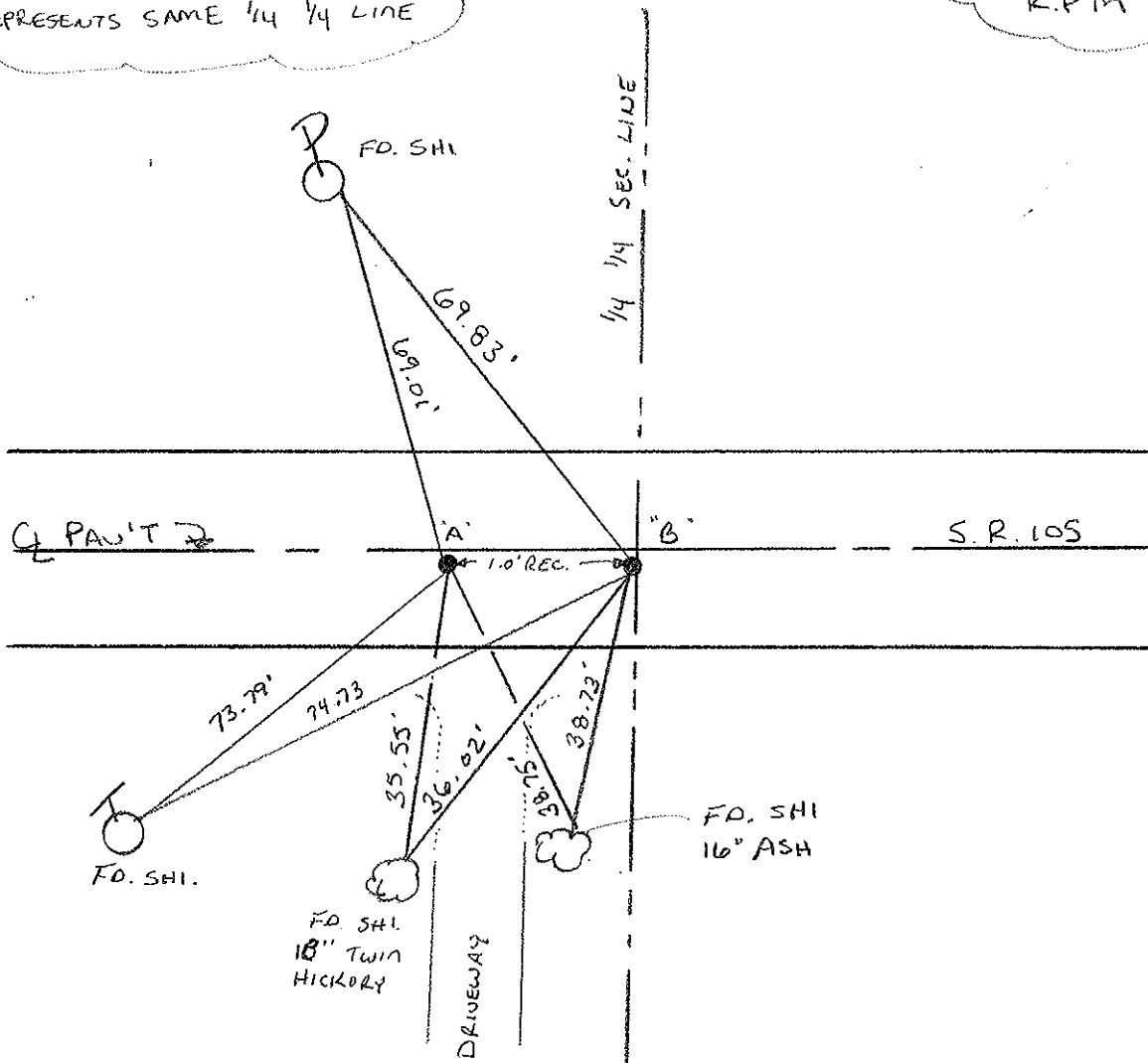
A - 10.0
B - 10.1 TO RT. EDGE PAVEMENT

S.L.M. A = 272 + 92 B = 272 + 93



RECORD: R.R. Below PK/WASHER = "B"
"A" = P.K. OVER R.R SPIKE, 1.0' WEST
REPRESENTS SAME 1/4 1/4 LINE

RESET PK/WASHER
6-22-00
K.P.M



O.D.O.T. DISTRICT 2 SURVEY OFFICE

PERSONNEL

REFERENCE NO. 60

SHEET OF

NOTES Cronin

Draw 5/25/88

H.C. Ripple

DATE 5/26/87

ROUTE #105

R.C. Barbour

WEATHER sunny

COUNTY Ottawa

Geyman

TEMP. 80°

TOWNSHIP Harris

SECTION 9

T 6 N R 14 E

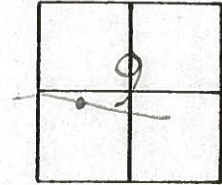
TYPE MONUMENT P.K. & washer

ON SURFACE - BELOW

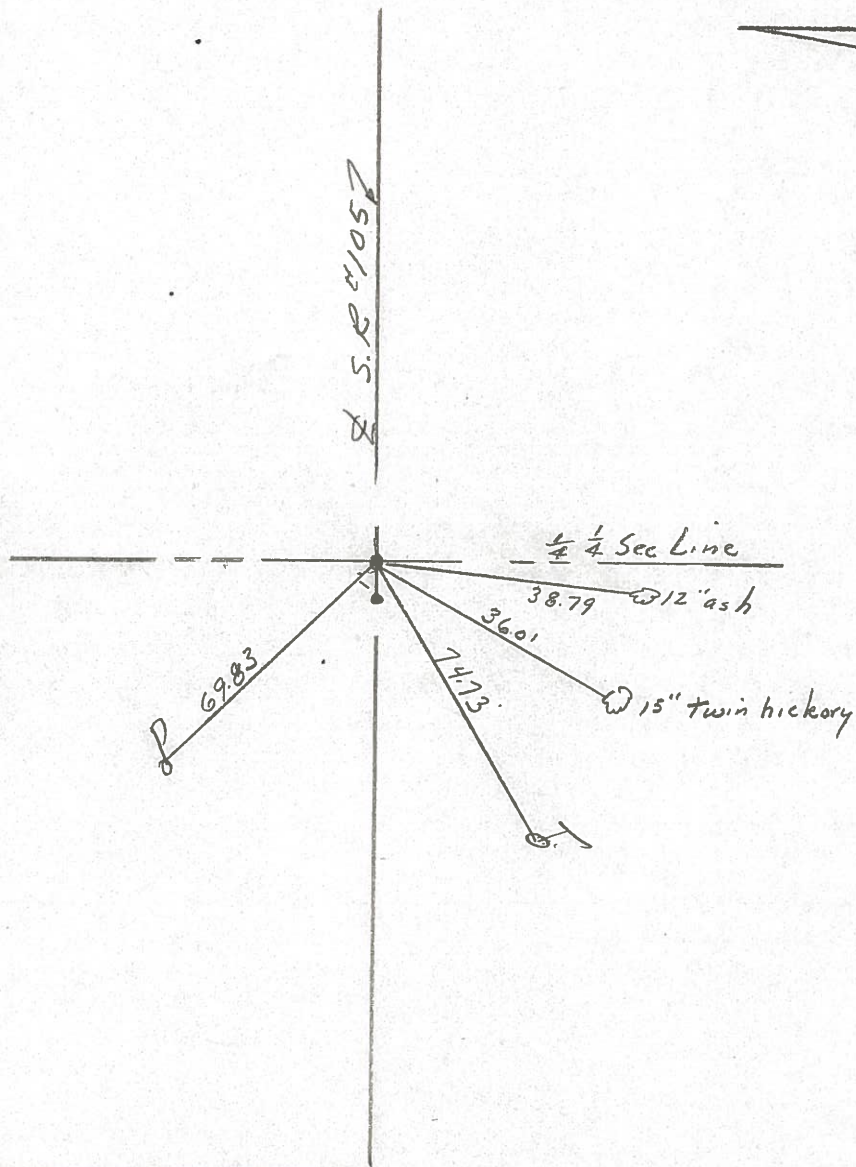
LEFT - ☉ PAV'T. - RIGHT

TO EDGE PAVEMENT

S.L.M. 272+50.5



RR spike below
P.K. & washer
P.K. over R.R. spike
10' w. represents same
1/4 1/4 line



PERSONNEL	TITLE	PERSONNEL	TITLE
Schreider			
Mosser			
Barbour			

COUNTY Ottawa DATE 3-7-74
 S. R. 105 WEATHER cloudy
 SEC 9 TEMP 66°

DESCRIPTION Harris Twp LEFT CENTER LINE RIGHT JOB NO. 84

