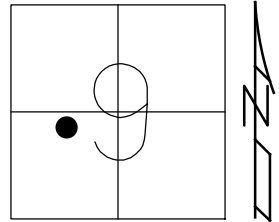


O.D.O.T. DISTRICT 2 SURVEY OFFICE (USE ONLY)

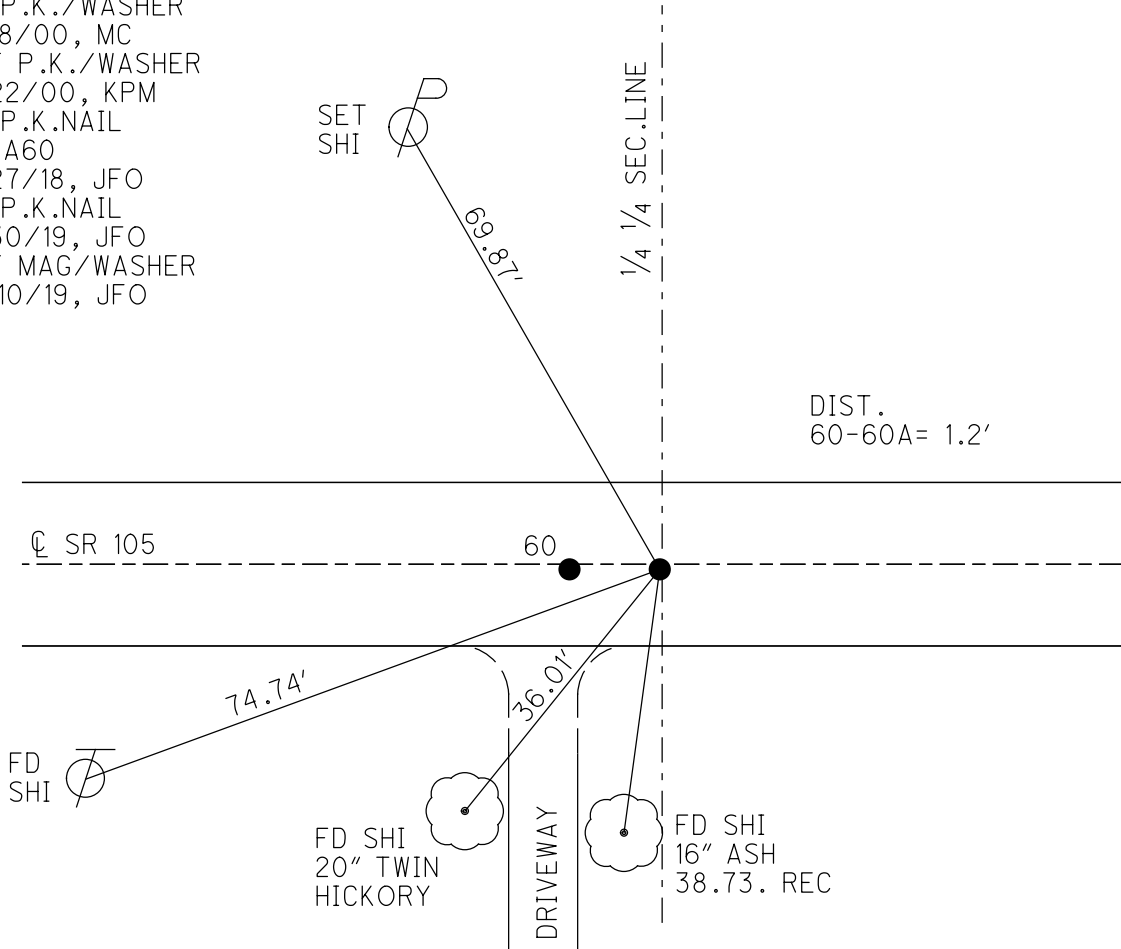
PERSONNEL _____ REFERENCE NO. 60 A SHEET 41 OF 63
 NOTES RHOADES DATE 7/30/19 ROUTE SR 105
 H.C. O'DONNELL WEATHER PARTLY CLOUDY COUNTY OTTAWA
 R.C. MILLER TEMP. 75° TOWNSHIP HARRIS
 _____ SECTION 9
 DWG BY BALBAUGH PID 92131 T 6 N R 14 E

TYPE MONUMENT P.K.NAIL
 ON SURFACE - ~~BELOW~~ ON _____
 OFFSET C PAVEMENT 0.6' ~~ET~~ : RT
10.1' TO RT EDGE PAVEMENT
 STATION: 272+27.19



HORZ.DATUM: NAD83 2011 GEOID: 2012A
 GRID: NORTHING: 666694.361 EASTING: 1761474.238

RECORD:
 R.R. BELOW P.K./WASHER
 FD P.K./WASHER
 4/18/00, MC
 SET P.K./WASHER
 6/22/00, KPM
 FD P.K.NAIL
 REFA60
 4/27/18, JFO
 FD P.K.NAIL
 7/30/19, JFO
 SET MAG/WASHER
 12/10/19, JFO



O.D.O.T. DISTRICT 2 SURVEY OFFICE

PERSONNEL

REFERENCE NO. 60

SHEET 33 OF 96

NOTES K. MOSER

H.C. M. CANTERBURY

DATE 4-18-00

ROUTE S.R. 105

R.C. M. BARNHISEL

WEATHER CLOUDY

COUNTY OTTAWA

TEMP. +55 °F

TOWNSHIP HARRIS

SECTION 9

T6 N R 14 E

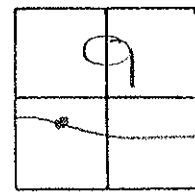
TYPE MONUMENT PK / WASHER

ON SURFACE - BELOW SURFACE

~~LEFT - C PAV'T.~~ - RIGHT A: 0.5' B: 0.6'

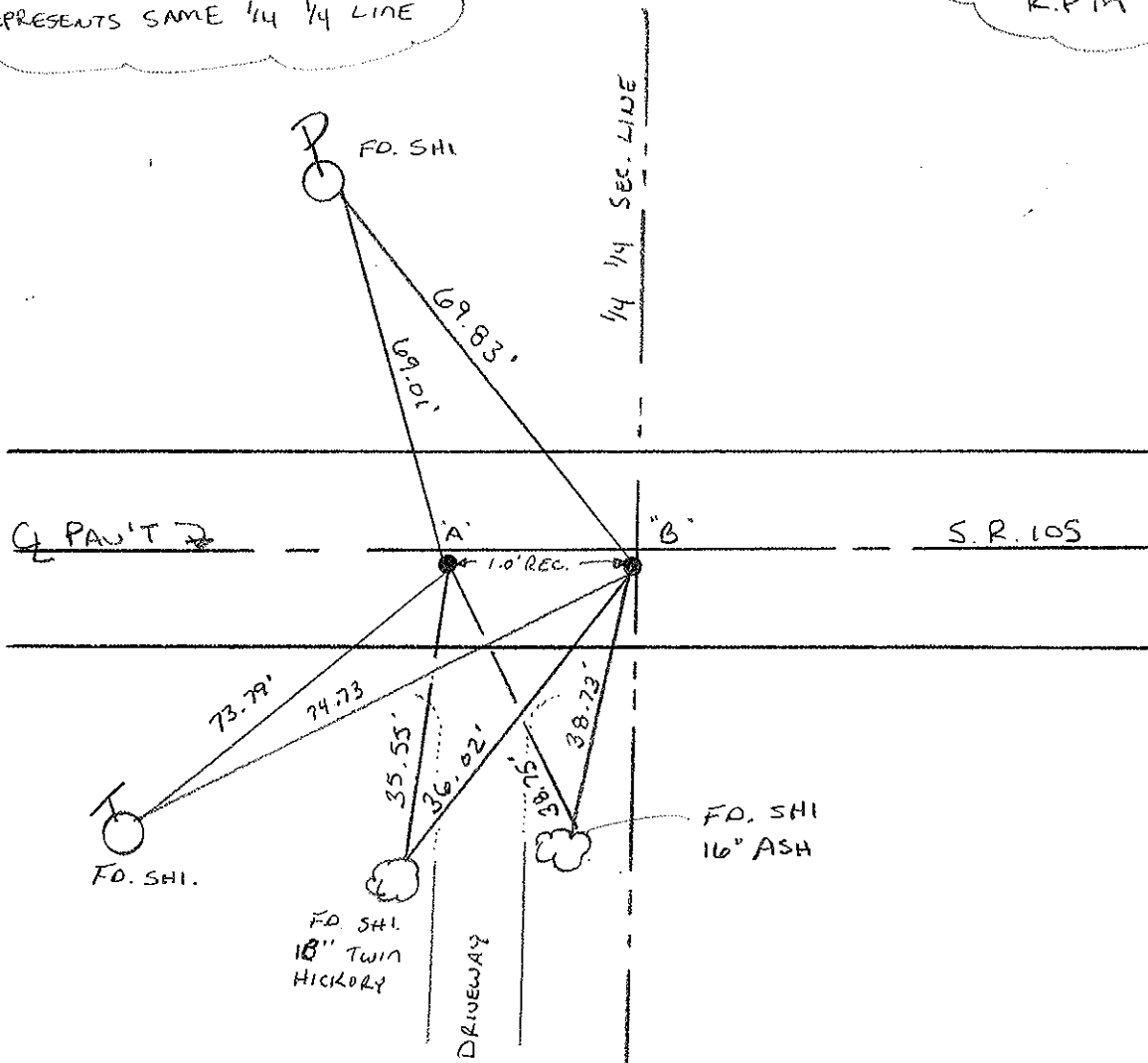
A - 10.0
B - 10.1 TO RT. EDGE PAVEMENT

S.L.M. A = 272 + 92 B = 272 + 93



RECORD: R.R. Below PK/WASHER = "B"
"A" = P.K. OVER R.R SPIKE, 1.0' WEST
REPRESENTS SAME 1/4 1/4 LINE

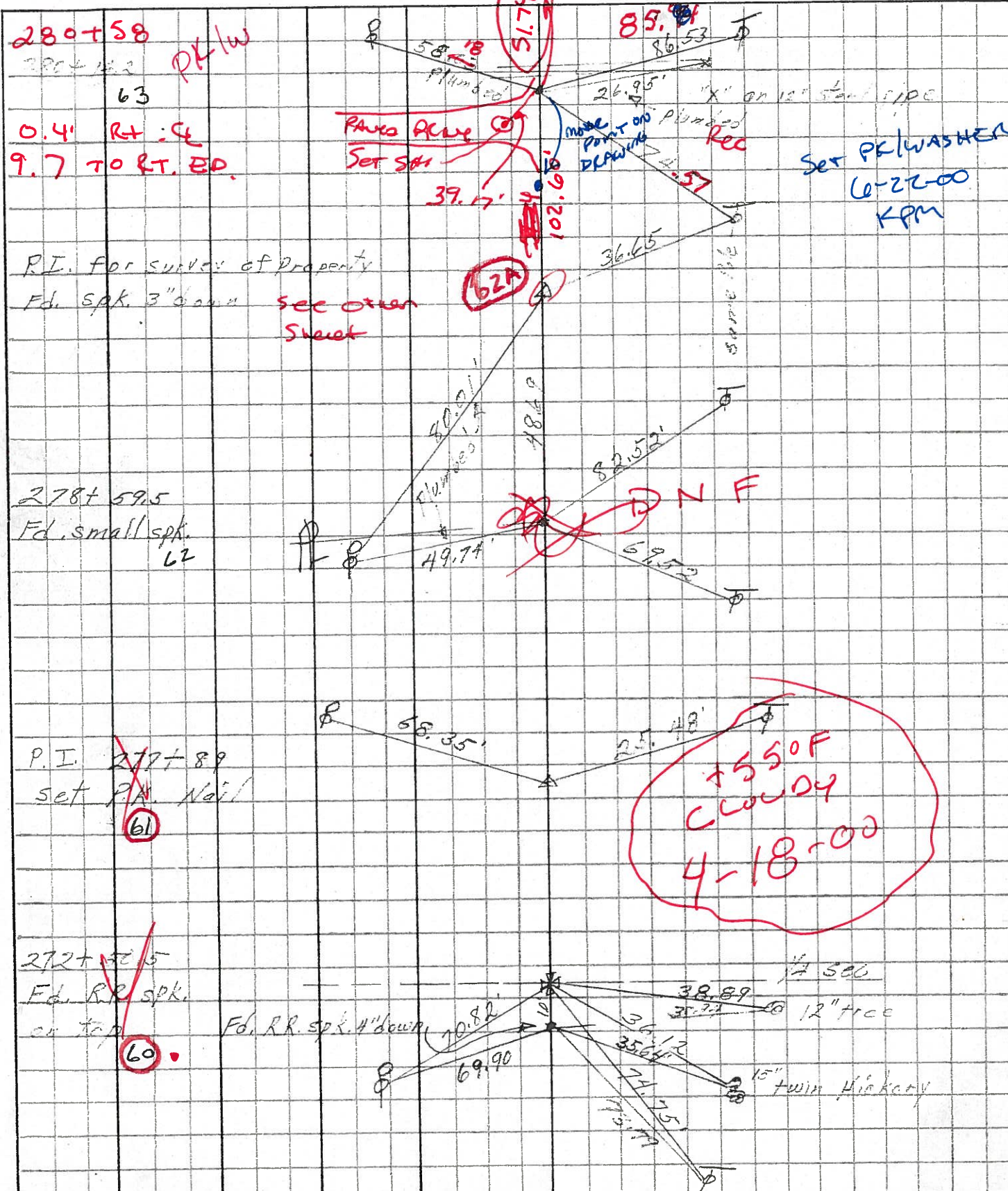
RESET PK/WASHER
6-22-00
K.P.M



PERSONNEL	TITLE	PERSONNEL	TITLE
Schneider			
Mosser			
Barbour			

COUNTY Ottawa DATE 3-7-74
 S. R. 105 WEATHER cloudy
 SEC 9 TEMP 66°

DESCRIPTION Harris Twp LEFT CENTER LINE RIGHT JOB NO. 84



PERSONNEL TITLE PERSONNEL TITLE
 Schneider _____
 Mosser _____
 Barbour _____

COUNTY Ottawa DATE 3-7-74
 S. R. 105 WEATHER cloudy
 SEC. 9 TEMP. 60°

DESCRIPTION Harris Twp JOB NO. _____

