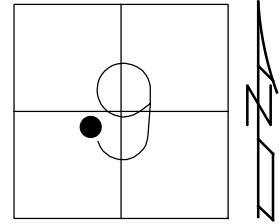


O.D.O.T. DISTRICT 2 SURVEY OFFICE (USE ONLY)

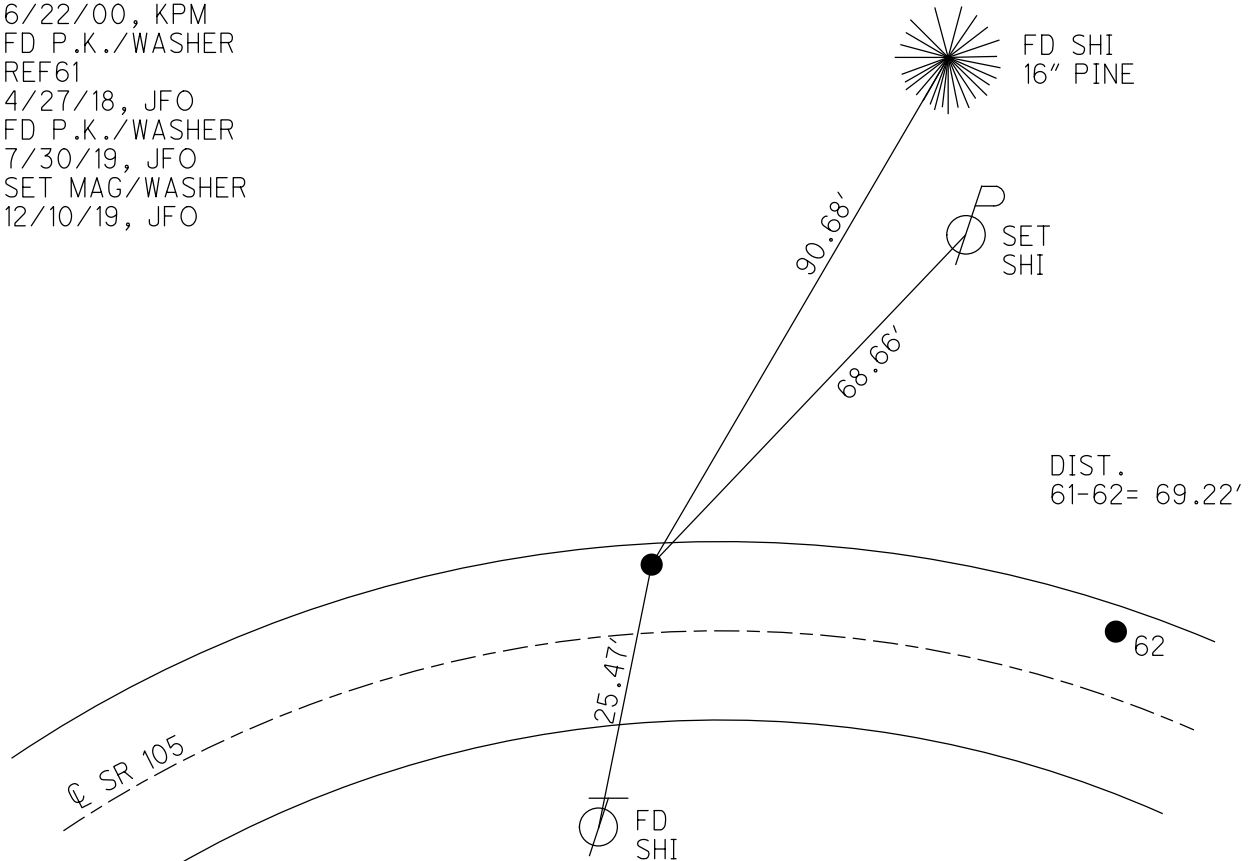
PERSONNEL _____ REFERENCE NO. 61 SHEET 42 OF 63
 NOTES RHOADES DATE 7/30/19 ROUTE SR 105
 H.C. O'DONNELL WEATHER PARTLY CLOUDY COUNTY OTTAWA
 R.C. MILLER TEMP. 80° TOWNSHIP HARRIS
 _____ SECTION 9
 DWG BY BALBAUGH PID 92131 T 6 N R 14 E

TYPE MONUMENT P.K./WASHER
 ON SURFACE - ~~BELOW~~ ON
 OFFSET C PAVEMENT 8.3' LT : ~~RT~~
1.5' TO LT EDGE PAVEMENT
 STATION: 277+66.77

HORZ.DATUM: NAD83 2011 GEOID: 2012A
 GRID: NORTHING: 666679.520 EASTING: 1762013.609



RECORD: P.I.
 FD P.K./WASHER
 4/18/00, MC
 SET P.K./WASHER
 6/22/00, KPM
 FD P.K./WASHER
 REF61
 4/27/18, JFO
 FD P.K./WASHER
 7/30/19, JFO
 SET MAG/WASHER
 12/10/19, JFO



O.D.O.T. DISTRICT 2 SURVEY OFFICE

PERSONNEL

REFERENCE NO. 61

SHEET 34 OF 96

NOTES K. Moser

H.C. M. CANTERBURY

DATE 4-18-00

ROUTE S.R. 105

R.C. M. BARNHISEL

WEATHER CLOUDY

COUNTY OTTAWA

TEMP. +55°F

TOWNSHIP HARRIS

SECTION 9

T6 N R 14 E

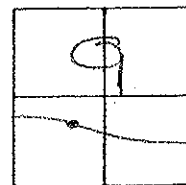
TYPE MONUMENT PK / WASHER

ON SURFACE - ~~BELOW~~ SURFACE

LEFT - ~~E~~ PAV'T. RIGHT 8.3' LT

1.5 TO LT. EDGE PAVEMENT

S.L.M. 278+34

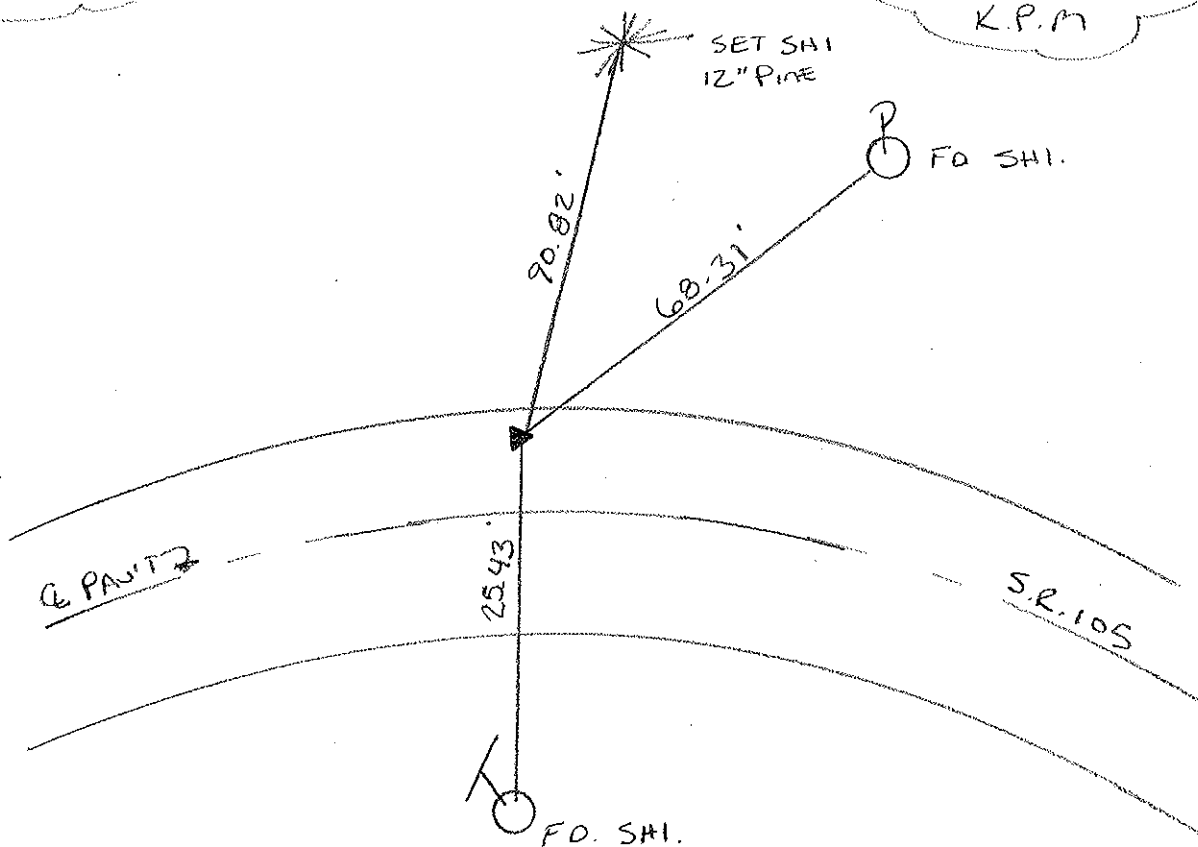


RECORD: P.I.

RESET PK / WASHER

6-22-00

K.P.M



O.D.O.T. DISTRICT 2 SURVEY OFFICE

PERSONNEL

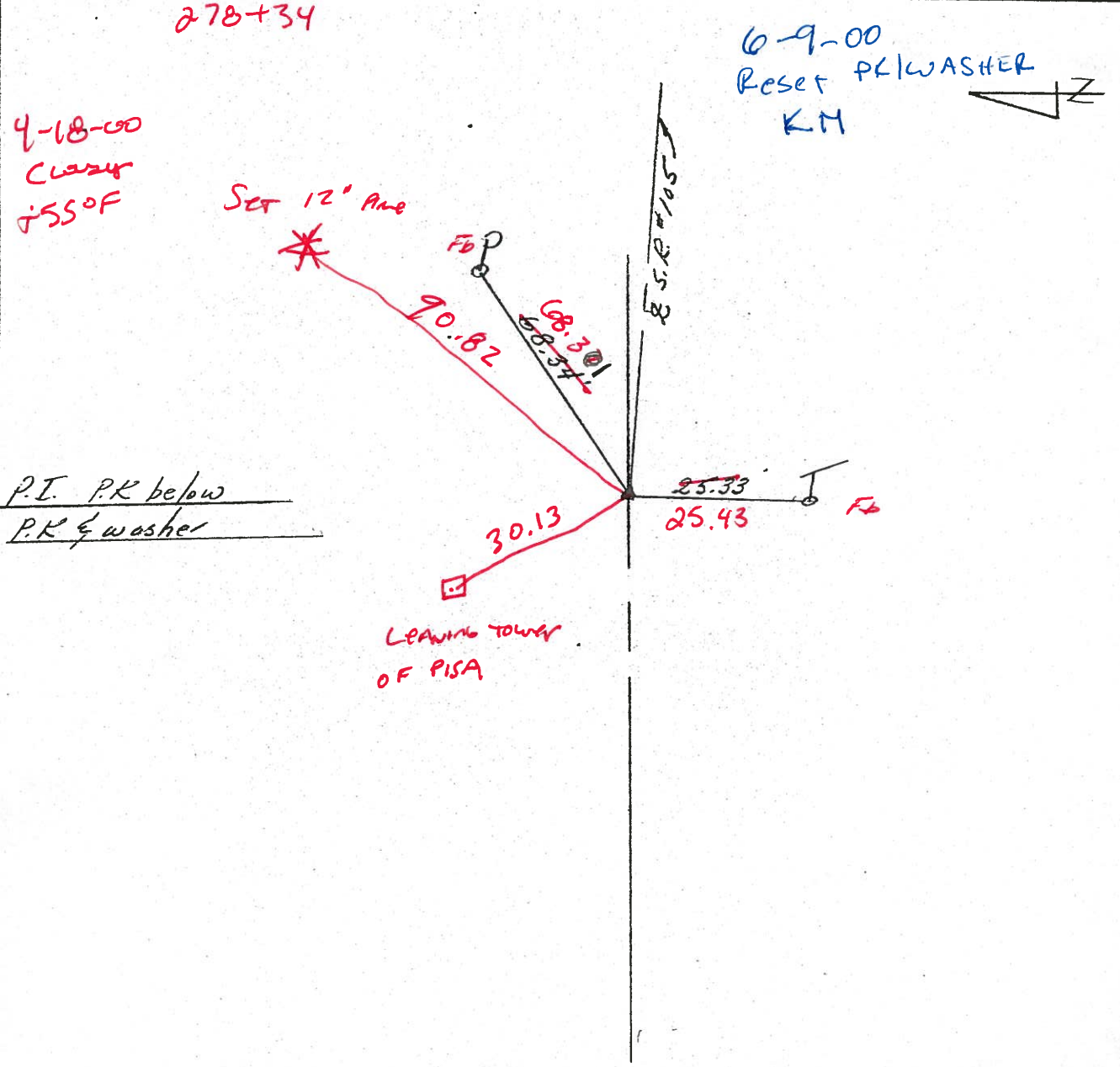
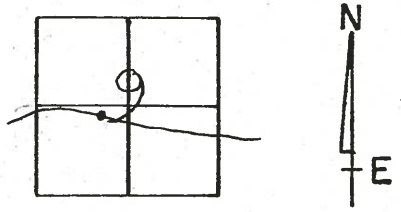
NOTES Cronin
 H.C. Ripple
 R.G. Barbour
Geyman

REFERENCE NO. 61
 DRAWN 5/25/88
 DATE 5/26/87
 WEATHER sunny
 TEMP. 80°

SHEET ___ OF ___

ROUTE #105
 COUNTY Ottawa
 TOWNSHIP Harris
 SECTION 9
T6 NR 14 E

TYPE MONUMENT P.K. & washer
 ON SURFACE - BELOW
 LEFT - ~~C~~ PAV'T. - RIGHT 8.3
1.5 TO ~~NET~~ EDGE PAVEMENT
 S.L.M. 277+89



O.D.O.T. DISTRICT 2 SURVEY OFFICE

PERSONNEL

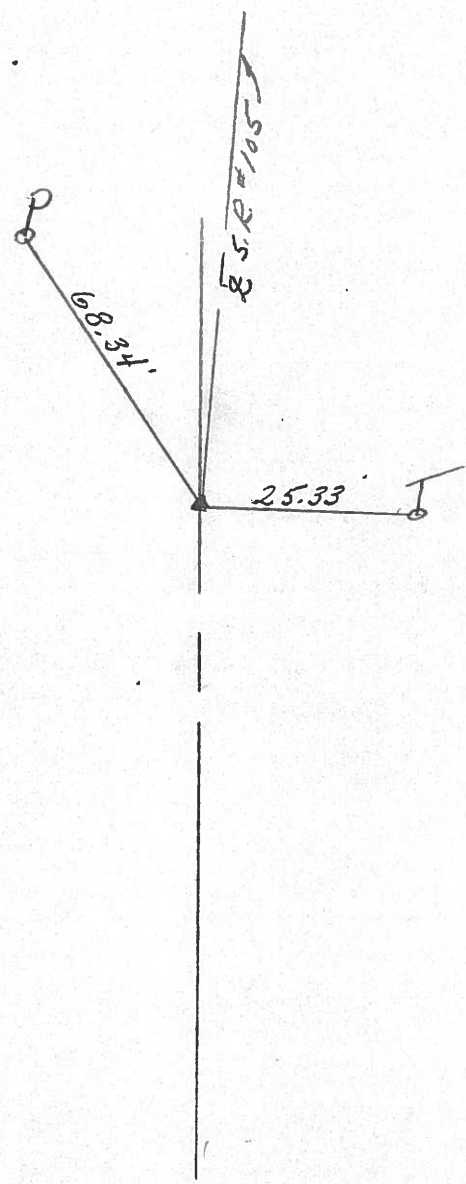
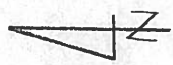
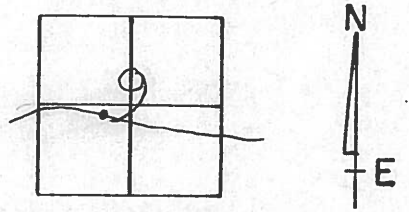
NOTES Cronin
H.C. Ripple
R.C. Barbour
Geyman

REFERENCE NO. 61
DRAWN 5/25/88
DATE 5/26/87
WEATHER sunny
TEMP. 80°

SHEET ___ OF ___

ROUTE #105
COUNTY Ottawa
TOWNSHIP Harris
SECTION 9
T6 NR 14 E

TYPE MONUMENT P.K. & washer
ON SURFACE - BELOW ___
LEFT - CL PAV'T. - RIGHT 8'
___ TO ___ EDGE PAVEMENT
S.L.M. 277+89



P.I. P.K. below
P.K. & washer

PERSONNEL TITLE PERSONNEL TITLE

Schneider

COUNTY Ottawa

DATE 3-7-74

Mosser

S. R. 105

WEATHER Cloudy

Barbour

SEC. 9

TEMP. 60°

DESCRIPTION Harris Tap

JOB NO.

LEFT

CENTER LINE

RIGHT

