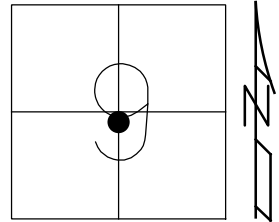


O.D.O.T. DISTRICT 2 SURVEY OFFICE (USE ONLY)

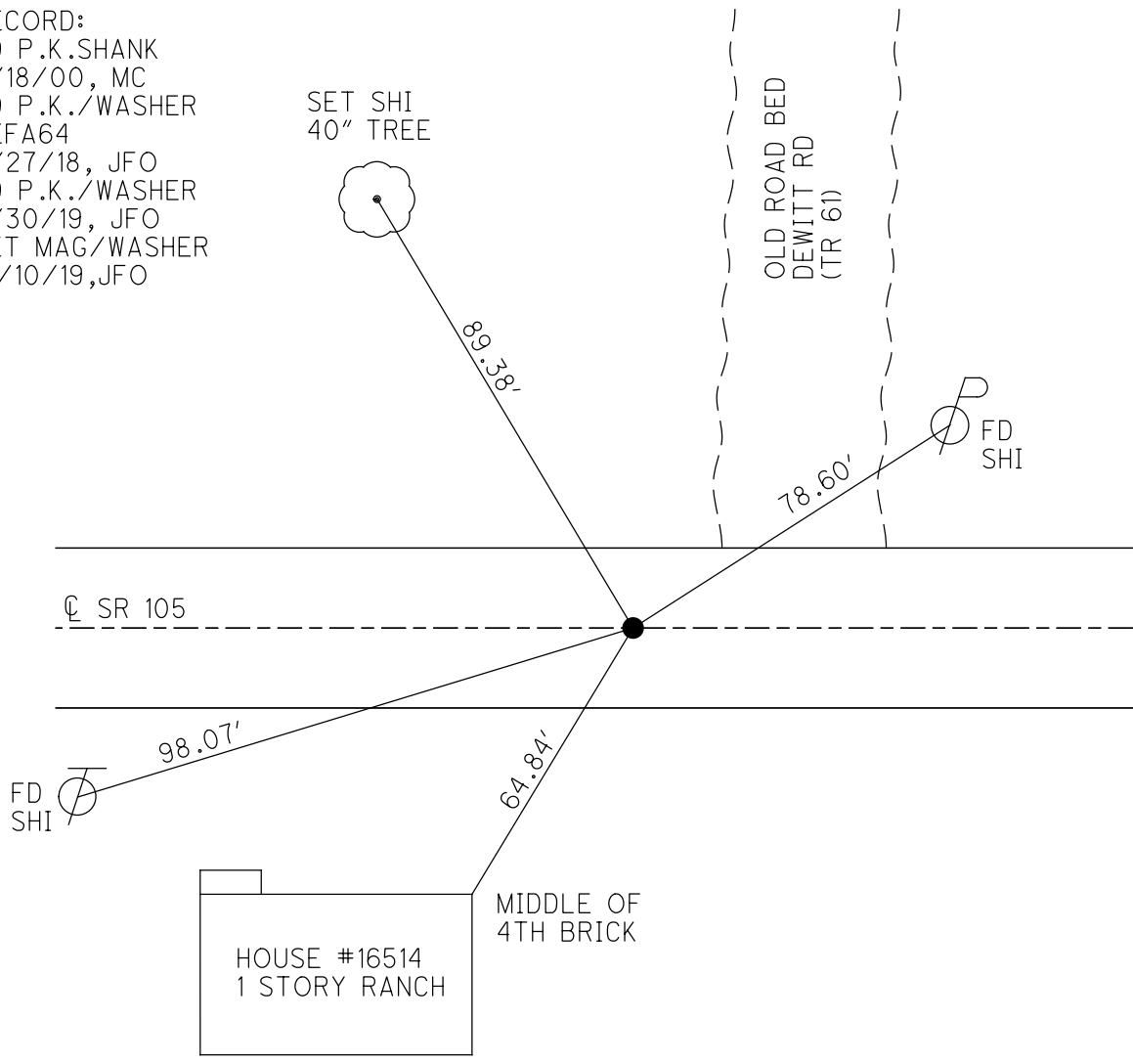
PERSONNEL _____ REFERENCE NO. 64 A SHEET 47 OF 63
 NOTES RHOADES DATE 7/30/19 ROUTE SR 105
 H.C. O'DONNELL WEATHER PARTLY CLOUDY COUNTY OTTAWA
 R.C. MILLER TEMP. 80° TOWNSHIP HARRIS
 _____ SECTION 9
 DWG BY BALBAUGH PID 92131 T 6 N R 14 E

TYPE MONUMENT P.K./WASHER
 ON SURFACE - ~~BELOW~~ ON
 OFFSET \varnothing PAVEMENT ON ~~LT~~ : ~~RT~~
0.3' TO RT EDGE PAVEMENT
 STATION: 285+39.35



HORZ.DATUM: NAD83 2011 GEOID: 2012A
 GRID: NORTHING: 666465.362 EASTING: 1762757.070

RECORD:
 FD P.K.SHANK
 4/18/00, MC
 FD P.K./WASHER
 REFA64
 4/27/18, JFO
 FD P.K./WASHER
 7/30/19, JFO
 SET MAG/WASHER
 12/10/19, JFO



O.D.O.T. DISTRICT 2 SURVEY OFFICE

PERSONNEL

REFERENCE NO. 64-A

SHEET 38 OF 96

NOTES K. Moser

H.C. M. CANTERBURY

DATE 4-18-00

ROUTE S.R. 105

R.C. M. BALNHISEL

WEATHER Cloudy

COUNTY OTTAWA

TEMP. +55°F

TOWNSHIP HARRIS

SECTION 9

T6 N R 14 E

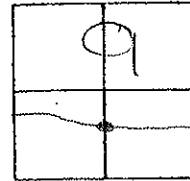
TYPE MONUMENT PK SHANK

~~ON SURFACE~~ - BELOW 2" Below

~~LEFT - C PAV'T. - RIGHT C PAV'T~~

0.3' TO RT. EDGE PAVEMENT

S.L.M. 286407



SET SHI
36" TREE



92.77'

DITCH
OLD ROAD
BED

78.67'



SET SHI

C PAVIT

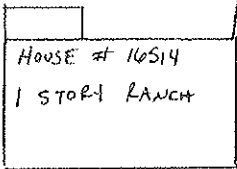
S.R. 105

98.07'



SET SHI

64.87'



HOUSE # 16514
1 STORY LANCH

MIDDLE OF
7 1/2 BRICK

PERSONNEL TITLE PERSONNEL TITLE

COUNTY Ottawa DATE 3-13-74

S. R. 105 WEATHER Cold-wind

SEC. 9 TEMP. 25°

DESCRIPTION Harris Twp. LEFT CENTER LINE RIGHT JOB NO.

