

O.D.O.T. DISTRICT 2 SURVEY OFFICE (USE ONLY)

PERSONNEL

REFERENCE NO. 65

SHEET 48 OF 63

NOTES RHOADES  
 H.C. O'DONNELL  
 R.C. MILLER

DATE 7/30/19  
 WEATHER CLOUDY  
 TEMP. 82°

ROUTE SR 105  
 COUNTY OTTAWA  
 TOWNSHIP HARRIS  
 SECTION 9  
 T 6 N R 14 E

DWG BY BALBAUGH PID 92131

TYPE MONUMENT P.K.SHANK

ON SURFACE - ~~BELOW~~ ON

OFFSET Q PAVEMENT 9.4' ~~RT~~ : RT  
0.8' TO RT EDGE PAVEMENT

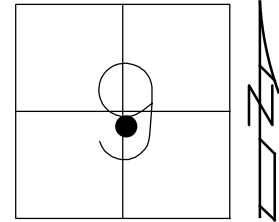
STATION: 290+16.62

HORZ.DATUM: NAD83 2011

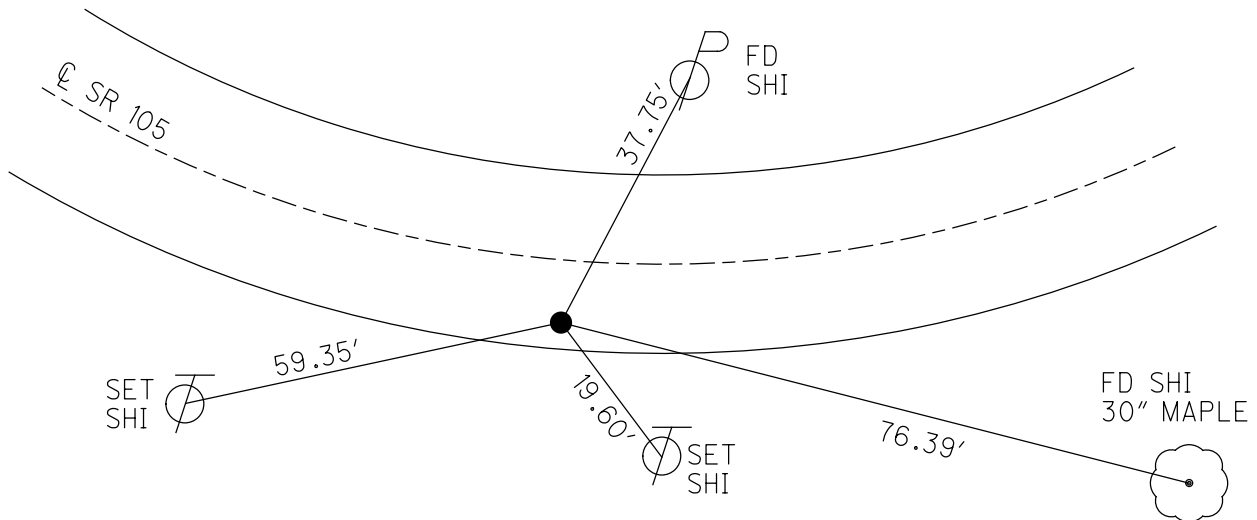
GEOID: 2012A

GRID: NORTHING: 666329.571

EASTING: 1763214.620



RECORD:  
 FD P.K./WASHER  
 4/18/00, MC  
 SET P.K./WASHER  
 6/22/00, KPM  
 FD P.K./WASHER  
 REF65  
 4/30/18, JFO  
 FD P.K.SHANK  
 7/30/19, JFO  
 SET MAG/WASHER  
 21/20/19, JFO



# O.D.O.T. DISTRICT 2 SURVEY OFFICE

PERSONNEL

REFERENCE NO. 65

SHEET 39 OF 96

NOTES K. MOSER

H.C. M. CANTERBURY

R.C. M. BARWISSEL

DATE 4-18-00

WEATHER CLOUDY

TEMP. +55°F

ROUTE S.R. 105

COUNTY OTTAWA

TOWNSHIP HARRIS

SECTION 9

TOWNSHIP 14 E

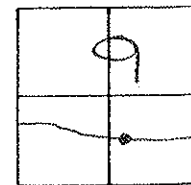
TYPE MONUMENT PK/WASHER

ON SURFACE - ~~BELOW~~ SURFACE

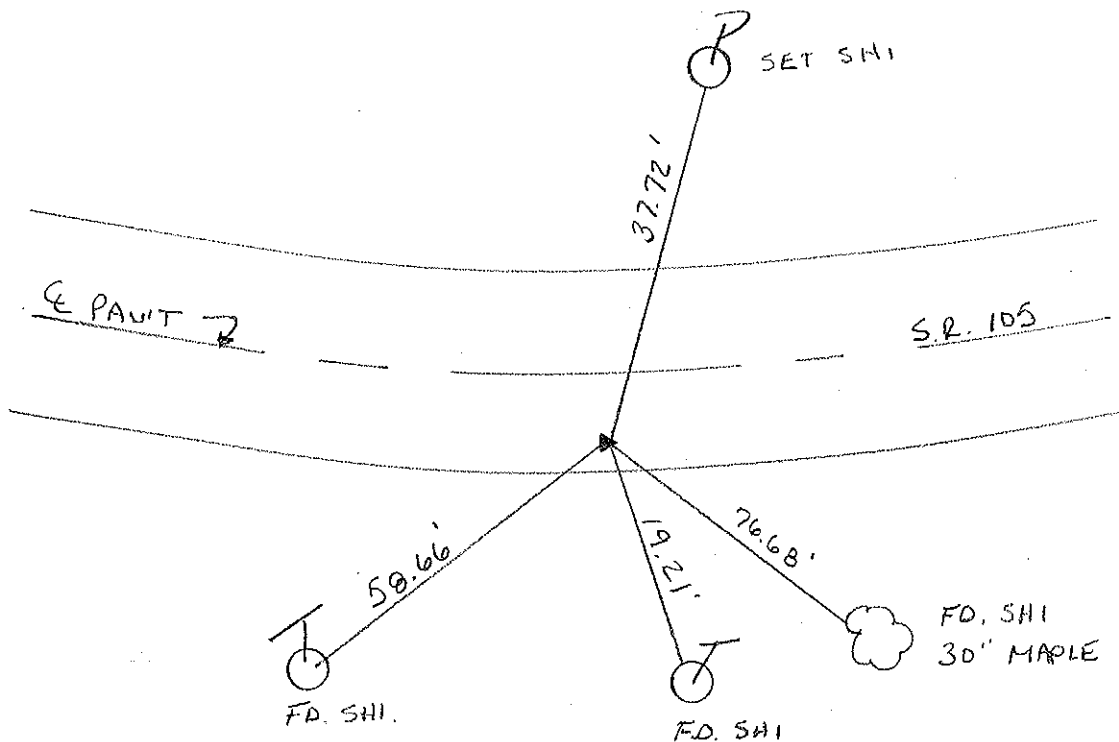
~~LEFT - C-PAV~~ 'T. - RIGHT 1.5' RT.

8.9 TO RT. EDGE PAVEMENT

S.L.M. 290 + 86



RESET PK/WASHER  
 6-22-00  
 K.P.M



# O.D.O.T. DISTRICT 2 SURVEY OFFICE

PERSONNEL

REFERENCE NO. 65

SHEET      OF     

NOTES Hoffman

H.C. LOHRKE

DATE 5-9-85

ROUTE SR 105

R.C. BARHISEL

WEATHER clear

COUNTY OTTAWA

TEMP. +65°

TOWNSHIP HARRIS

SECTION 9

T      R     

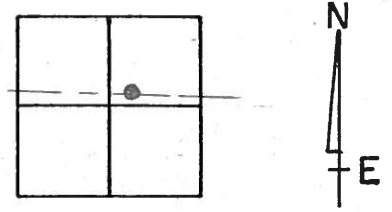
TYPE MONUMENT P.K. / WASHER

ON SURFACE - BELOW Yes

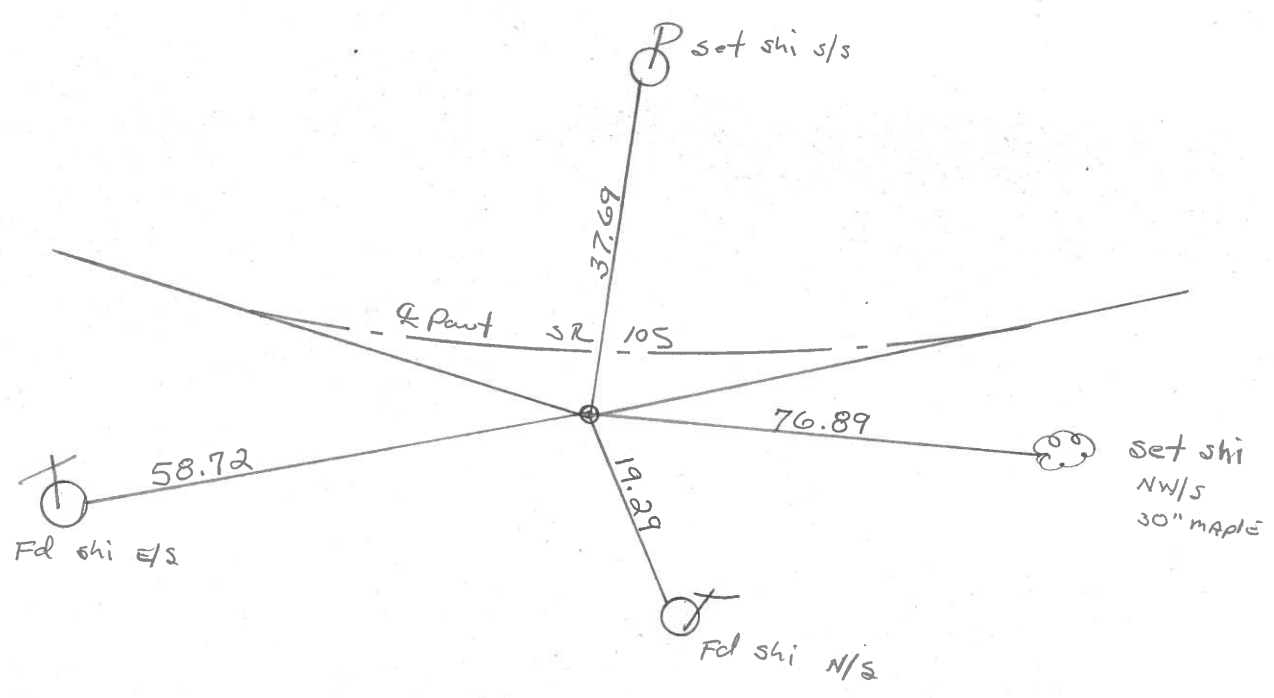
LEFT- & PAV'T. - RIGHT 8.6

1.7 TO RT. EDGE PAVEMENT

S.L.M. 290 + 40



P.I.



PERSONNEL TITLE PERSONNEL TITLE

COUNTY Ottawa

DATE 3-13-74

S. R. 105

WEATHER Cold-windy

SEC. 9

TEMP. 25°

DESCRIPTION Harris Twp.

JOB NO.

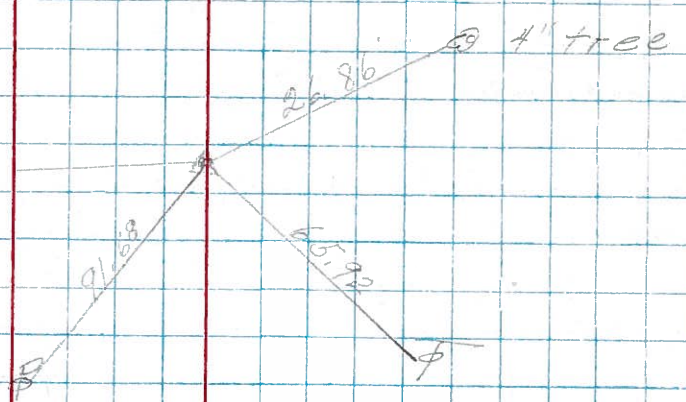
LEFT

CENTER LINE

RIGHT

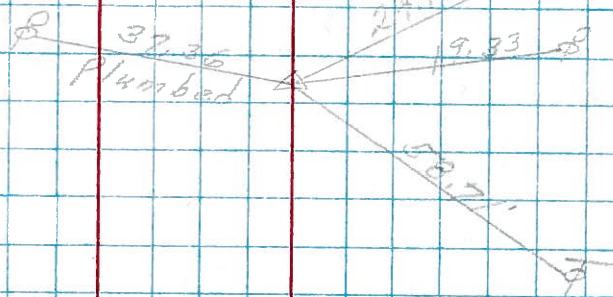
P.I.  
299+56.5  
Fd. R.R. spk.

66



P.I.  
290+40  
Set P.K. Nail

65



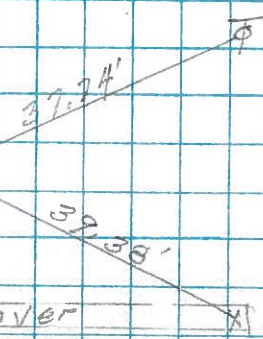
Co. Rd. #61  
Map Road North

P.I.  
Fd. Spk. on top  
280+65.93

64



40.62  
Plumbed



12" x-over