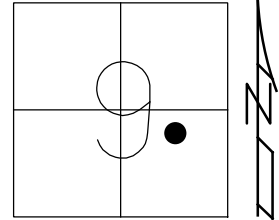


O.D.O.T. DISTRICT 2 SURVEY OFFICE (USE ONLY)

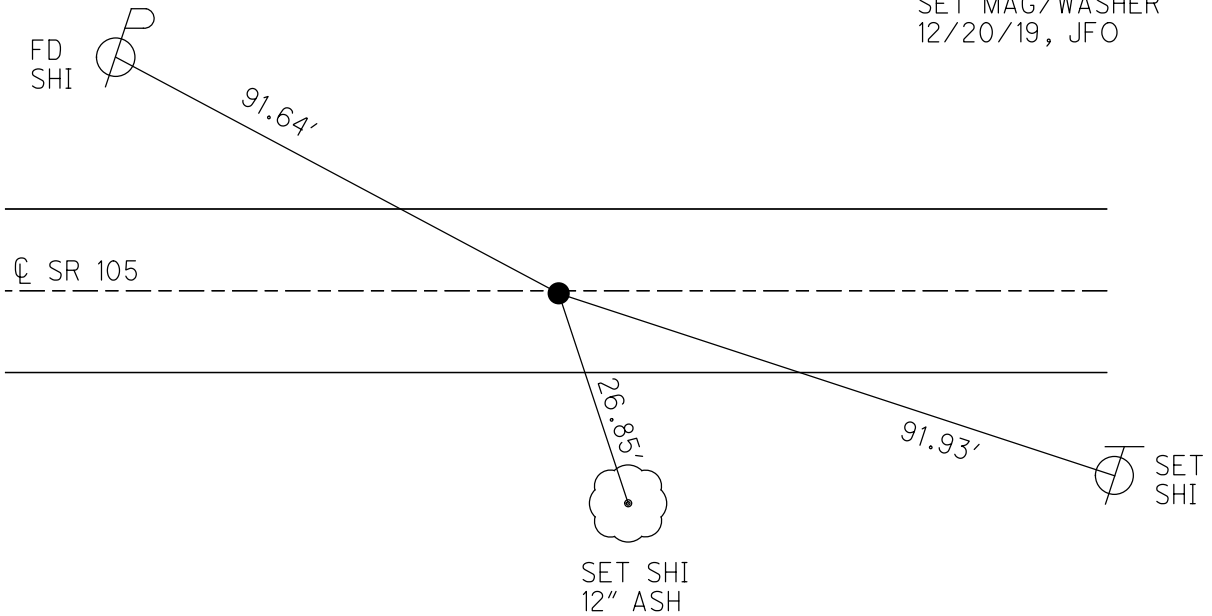
PERSONNEL _____ REFERENCE NO. 66 SHEET 49 OF 63
NOTES RHOADES DATE 7/30/19 ROUTE SR 105
H.C. O'DONNELL WEATHER CLOUDY COUNTY OTTAWA
R.C. MILLER TEMP. 82° TOWNSHIP HARRIS
DWG BY BALBAUGH PID 92131 SECTION 9
T 6 N R 14 E

TYPE MONUMENT P.K.SHANK
ON SURFACE - ~~BELOW~~ ON _____
OFFSET \odot PAVEMENT 0.4' ~~LT~~ : RT
10.0' TO RT EDGE PAVEMENT
STATION: 299+32.66

HORZ.DATUM: NAD83 2011 GEOID: 2012A
GRID: NORTHING: 666200.380 EASTING: 1764122.277



RECORD:
FD R.R.SPIKE
1974
FD P.K./WASHER
4/18/00, MC
SET P.K./WASHER
6/22/00, KPM
FD P.K.NAIL
REF66
4/27/18, JFO
FD P.K.SHANK
7/30/19, JFO
SET MAG/WASHER
12/20/19, JFO



O.D.O.T. DISTRICT 2 SURVEY OFFICE

PERSONNEL

NOTES K. MOSER

H.C. M. CANTERBURY

R.C. M. BARNHISEL

REFERENCE NO. 66

(#67 - D.N.F.)

DATE 4-18-00

WEATHER CLOUDY

TEMP. +55 °F

SHEET 40 OF 96

ROUTE S.R. 105

COUNTY OTTAWA

TOWNSHIP HARRIS

SECTION _____

T6 N R 14 E

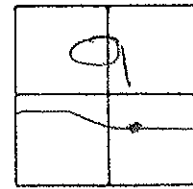
TYPE MONUMENT PK / WASHER

ON SURFACE - ~~BELOW~~ SURFACE

~~LEFT - 0 PAV'T.~~ - RIGHT 0.4 RT

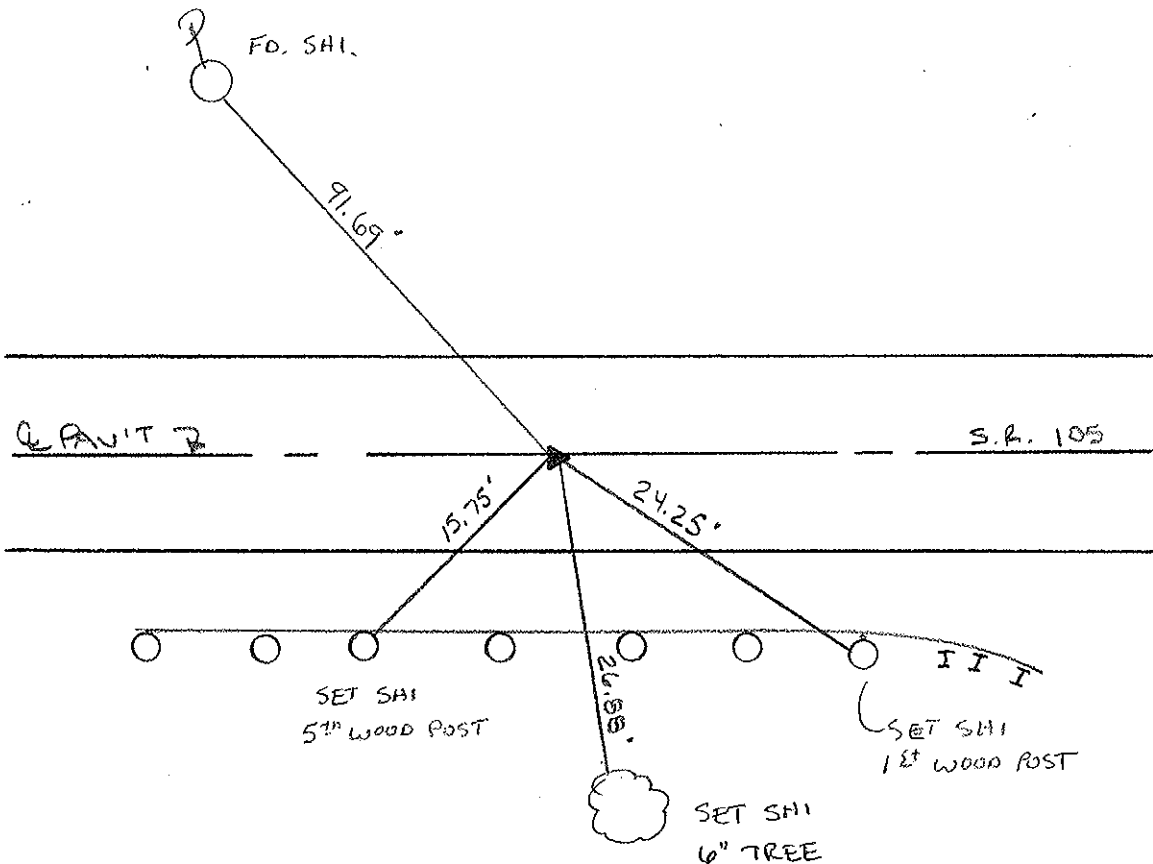
10.0 TO RT. EDGE PAVEMENT

S.L.M. 300 + 05



RECORD: FD. R.R. SPIKE
"1974"

RESET PK/WASHER
6-22-00
K.P.M.



O.D.O.T. DISTRICT 2 SURVEY OFFICE

PERSONNEL

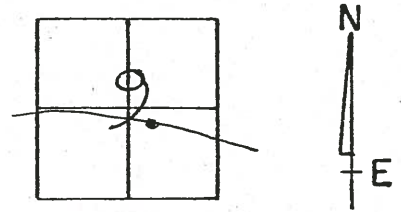
NOTES Crossin
H.C. Ripple
R.C. Barbour
Geyman

REFERENCE NO. 66
DRAWN 5/25/88
DATE 5/26/87
WEATHER sunny
TEMP. 85°

SHEET ___ OF ___

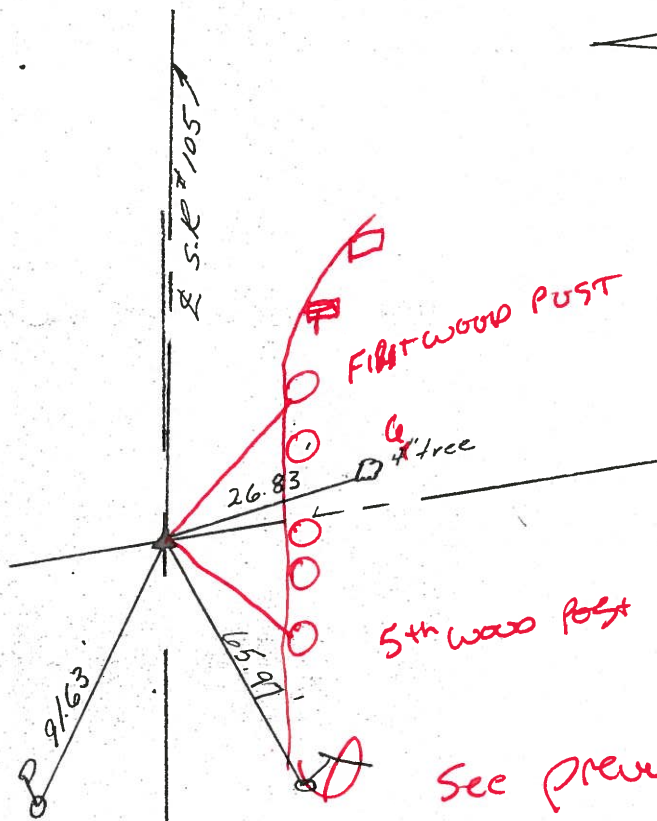
ROUTE #105
COUNTY Ottawa
TOWNSHIP Harris
SECTION 9
T 6 N R 14 E

TYPE MONUMENT P.K. & washer
ON SURFACE - BELOW _____
LEFT - ☉ PAV'T. - RIGHT _____
TO _____ EDGE PAVEMENT
S.L.M. 299 + 56.5 PI



4-18-00
Cloudy
+55°F
FD PK/WASHER

P.K. & R.R. spike
below P.K. & washer



O.D.O.T. DISTRICT 2 SURVEY OFFICE

PERSONNEL

NOTES

H.C.

R.C.

REFERENCE NO. 66

DRAWN 5/25/88

DATE 5/26/87

WEATHER sunny

TEMP. 85°

SHEET OF

ROUTE #105

COUNTY Ottawa

TOWNSHIP Harris

SECTION 9

T 6 N R 14 E

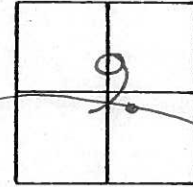
TYPE MONUMENT P.K. & washer

ON SURFACE - BELOW

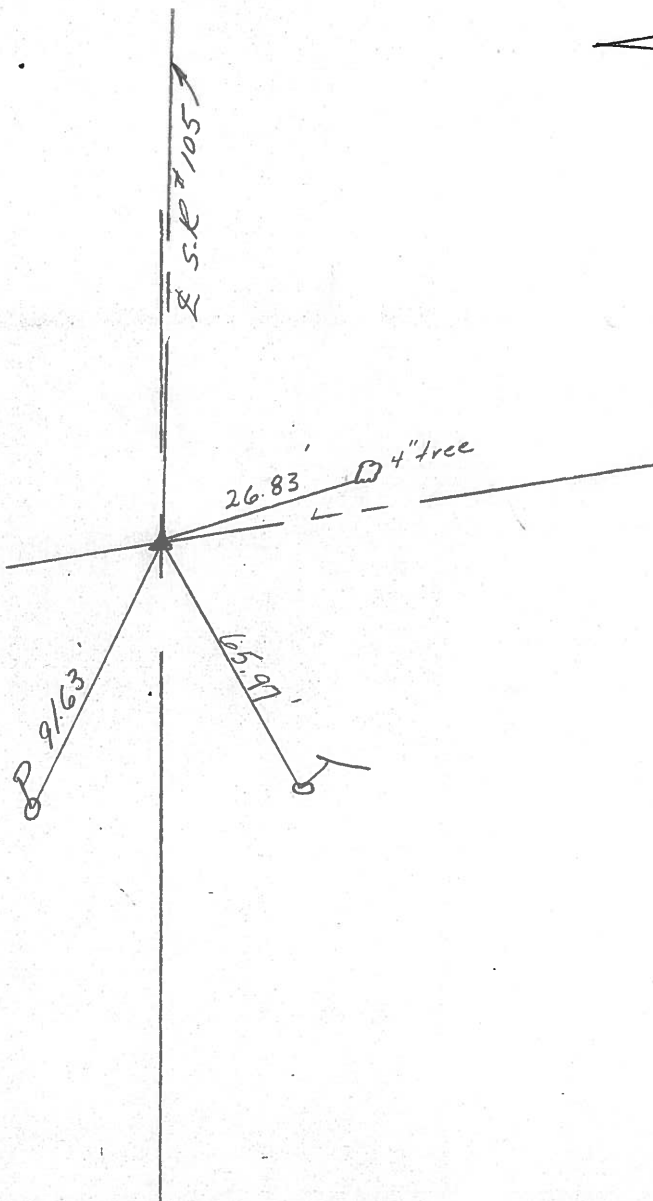
LEFT - & PAV'T. - RIGHT

TO EDGE PAVEMENT

S.L.M. 299+56.5 PI



P.K. & R.R. spike
below P.K. & washer



PERSONNEL _____ TITLE _____ PERSONNEL _____ TITLE _____
 COUNTY Ottawa DATE 3-13-74
 S. R. 105 WEATHER Co ld-wind
 SEC. 9 TEMP. 25°

DESCRIPTION Harris Twp. JOB NO. _____
 LEFT CENTER LINE RIGHT

