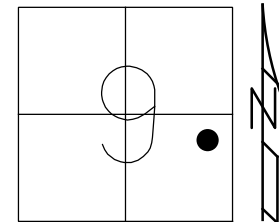


O.D.O.T. DISTRICT 2 SURVEY OFFICE (USE ONLY)

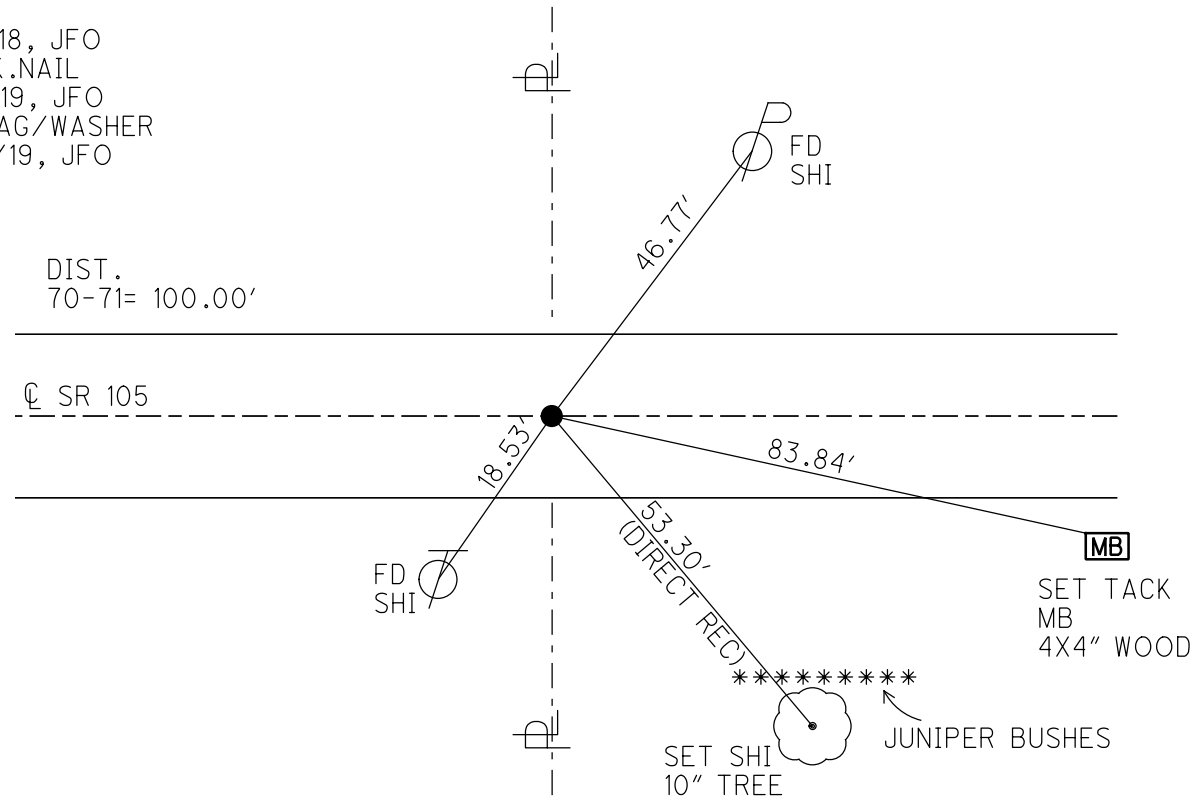
PERSONNEL \_\_\_\_\_ REFERENCE NO. 71 SHEET 52 OF 63  
 NOTES RHOADES DATE 7/30/19 ROUTE SR 105  
 H.C. O'DONNELL WEATHER CLOUDY COUNTY OTTAWA  
 R.C. MILLER TEMP. 82° TOWNSHIP HARRIS  
 DWG BY BALBAUGH PID 92131 SECTION 9  
 T 6 N R 14 E

TYPE MONUMENT P.K.NAIL  
 ON SURFACE - ~~BELOW~~ ON  
 OFFSET  $\odot$  PAVEMENT ON ~~LT~~ : ~~RT~~  
10.1' TO RT EDGE PAVEMENT  
 STATION: 306+37.06



HORZ.DATUM: NAD83 2011 GEOID: 2012A  
 GRID: NORTHING: 666065.644 EASTING: 1764813.665

RECORD:  
 FD R.R.SPIKE  
 1974  
 FD LG.R.R.SPIKE  
 4/18/00, MC  
 SET P.K./WASHER  
 6/22/00, KPM  
 FD P.K./WASHER  
 REF71  
 4/27/18, JFO  
 FD P.K.NAIL  
 7/30/19, JFO  
 SET MAG/WASHER  
 12/20/19, JFO



# O.D.O.T. DISTRICT 2 SURVEY OFFICE

PERSONNEL

REFERENCE NO. 71

SHEET 42 OF 96

NOTES K. Moser

H.C. M. CANTERBURY

DATE 4-18-00

ROUTE S.R. 105

R.C. M. BARNHISEL

WEATHER CLOUDY

COUNTY OTTAWA

TEMP. +55 °F

TOWNSHIP HARRIS

SECTION 9

T6 N R 14 E

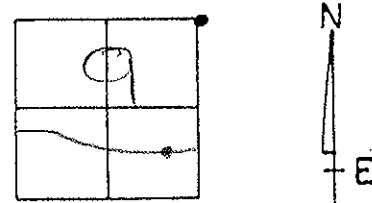
TYPE MONUMENT LG. R.R. SPIKE

ON SURFACE - BELOW 2" BELOW

EFT - & PAV'T. - RIGHT &

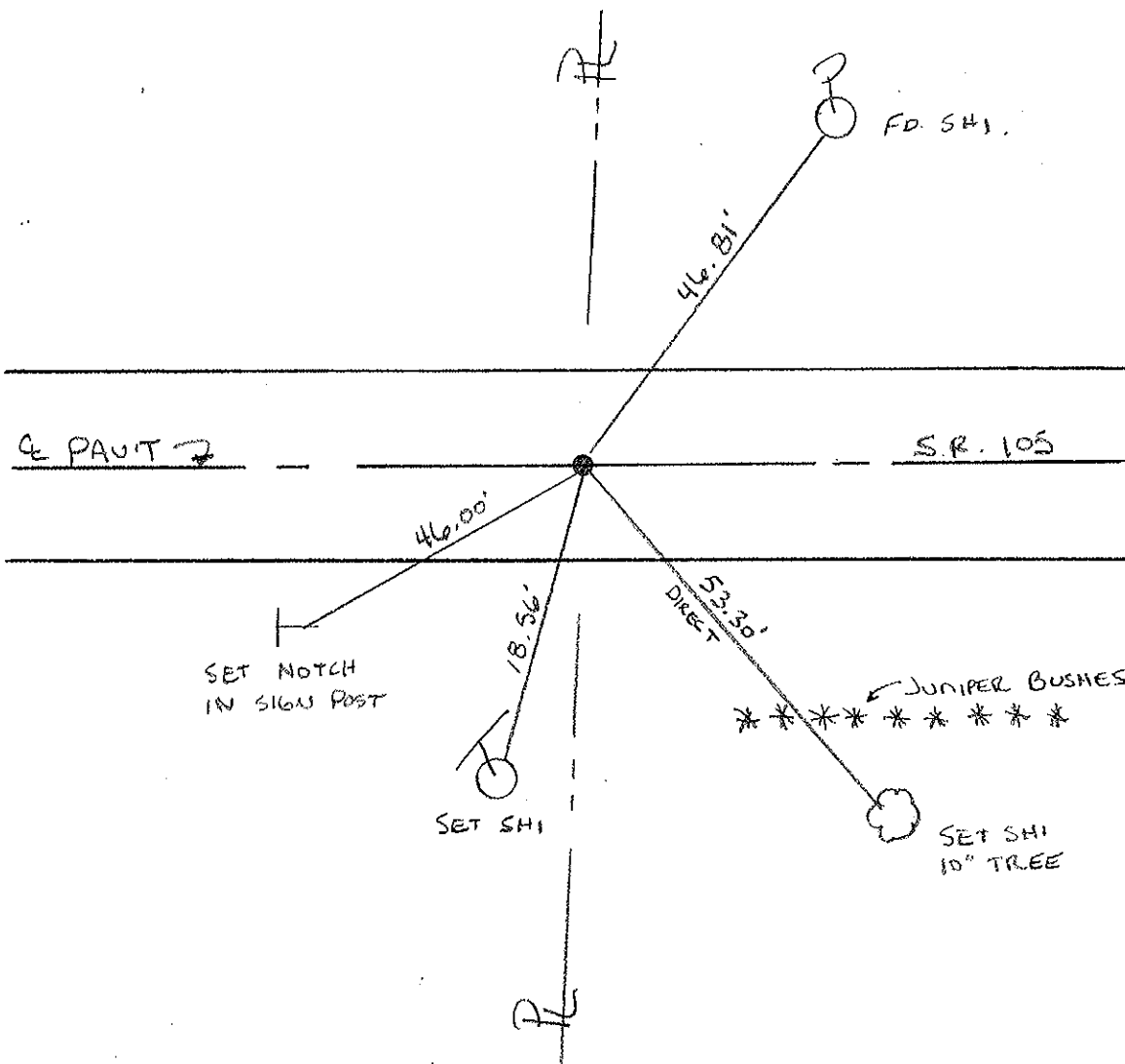
10-1' TO RT. EDGE PAVEMENT

S.L.M. 307 + 12



Record: FO R.R. SPIKE  
"1974"

RESET PK/WASHER  
6-22-00  
K.P.M



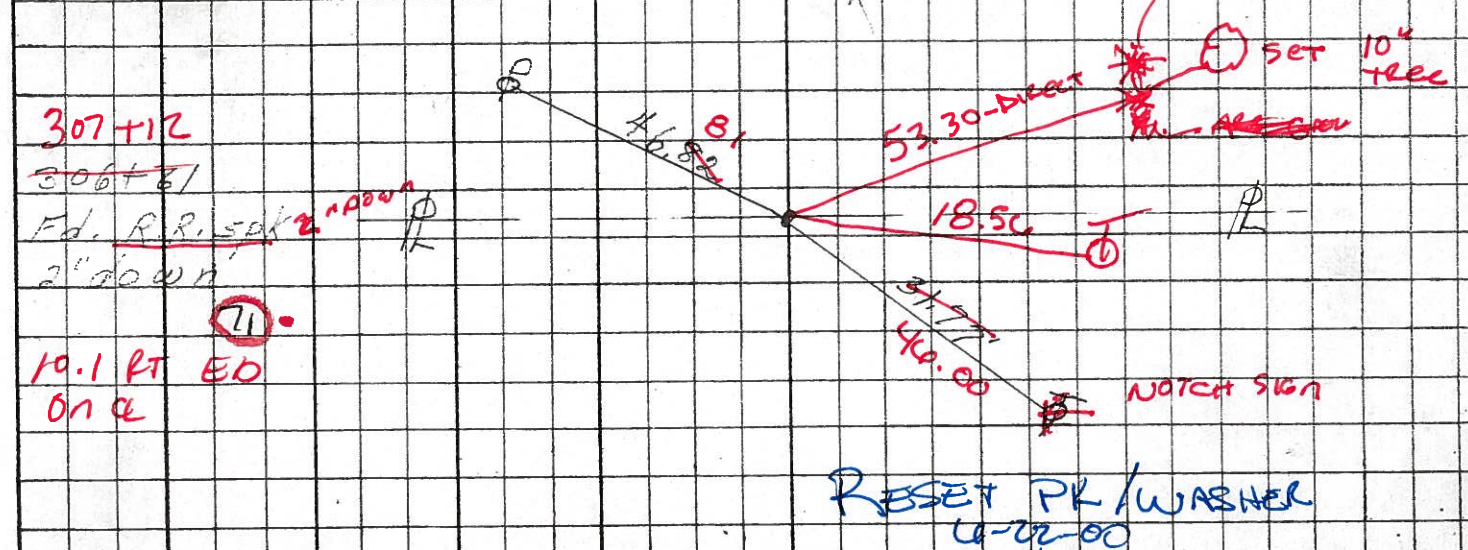
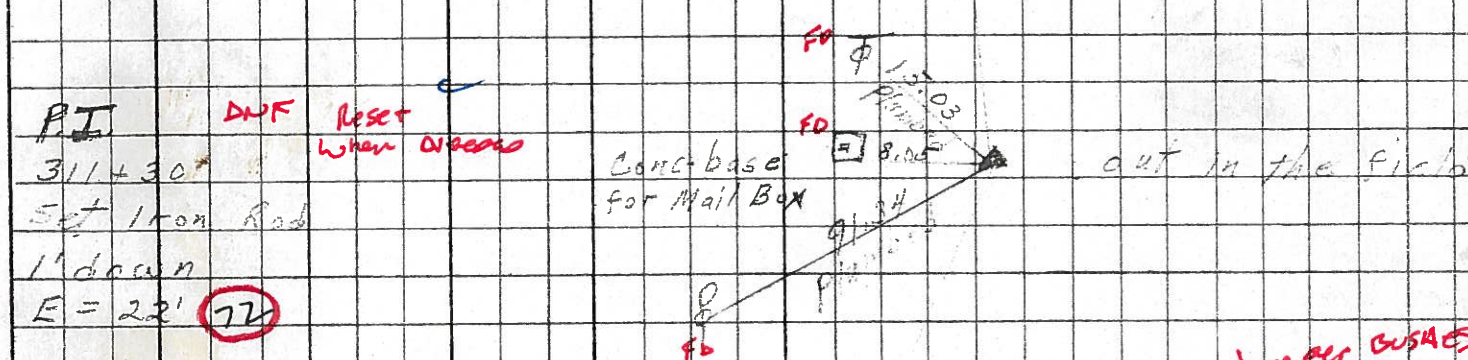
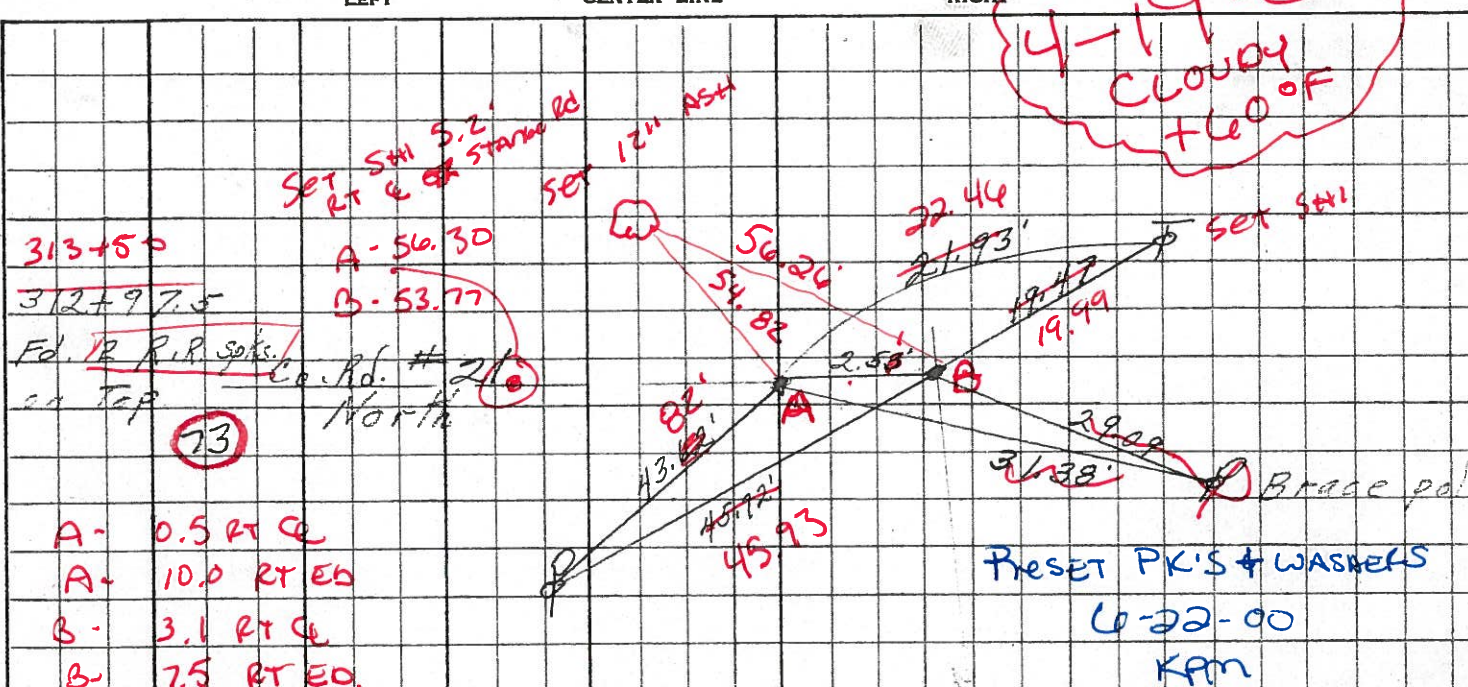
PERSONNEL TITLE PERSONNEL TITLE

COUNTY Ottawa DATE 4-17-74

S. R. 105 WEATHER Fair

SEC. 9 & 10 TEMP. 50°

DESCRIPTION Harris Twp. JOB NO. 4-19-00



PERSONNEL TITLE PERSONNEL TITLE

COUNTY Ottawa DATE 4-17-74

S. R. 105 WEATHER Fair

SEC. 9 & 10 TEMP. 50°

DESCRIPTION Harris Twp. LEFT CENTER LINE RIGHT JOB NO.

