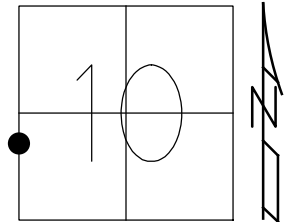


O.D.O.T. DISTRICT 2 SURVEY OFFICE (USE ONLY)

PERSONNEL _____ REFERENCE NO. 73 SHEET 54 OF 63
 NOTES RHOADES DATE 7/31/19 ROUTE SR 105
 H.C. O'DONNELL WEATHER CLOUDY COUNTY OTTAWA
 R.C. MILLER TEMP. 72° TOWNSHIP HARRIS
 DWG BY BALBAUGH PID 92131 SECTION 10
 T 6 N R 14 E

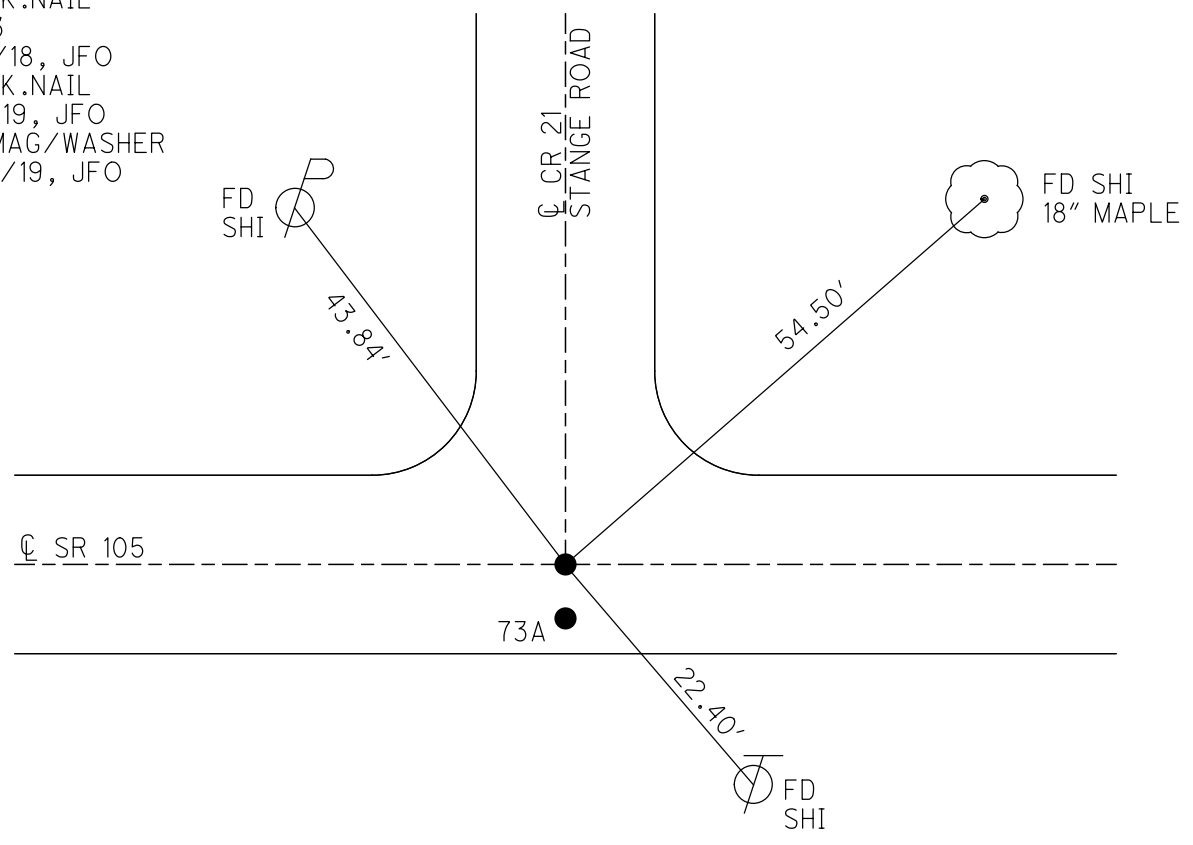
TYPE MONUMENT P.K.NAIL
 ON SURFACE - ~~BELOW~~ ON _____
 OFFSET C PAVEMENT 0.5' ~~LT~~ : RT
10.0' TO RT EDGE PAVEMENT
 STATION: 312+73.84



HORZ.DATUM: NAD83 2011 GEOID: 2012A
 GRID: NORTHING: 665987.807 EASTING: 1765444.880

RECORD:
 FD LG.R.R.SPIKE
 1974
 FD LG.R.R.SPIKE
 4/19/00, MC
 SET P.K./WASHER
 6/22/00, KPM
 FD P.K.NAIL
 REF73
 4/27/18, JFO
 FD P.K.NAIL
 7/31/19, JFO
 SET MAG/WASHER
 12/23/19, JFO

DIST.
 73-73A= 2.54'



O.D.O.T. DISTRICT 2 SURVEY OFFICE

PERSONNEL

REFERENCE NO. 73

SHEET 44 OF 96

NOTES K. MOSER

H.C. M. CANTERBURY

DATE 4-19-00

ROUTE S.R. 105

R.C. M. BARNHISEL

WEATHER CLOUDY

COUNTY OTTAWA

TEMP. +60°F

TOWNSHIP HARRIS

SECTION 10

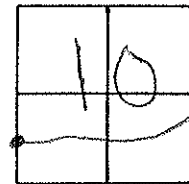
T6 N R 14 E

TYPE MONUMENT LG. R.R. SPIKES
 ON SURFACE - BELOW SURFACE

~~EST - C PAV'T.~~ - RIGHT A=0.5' B=3.1'

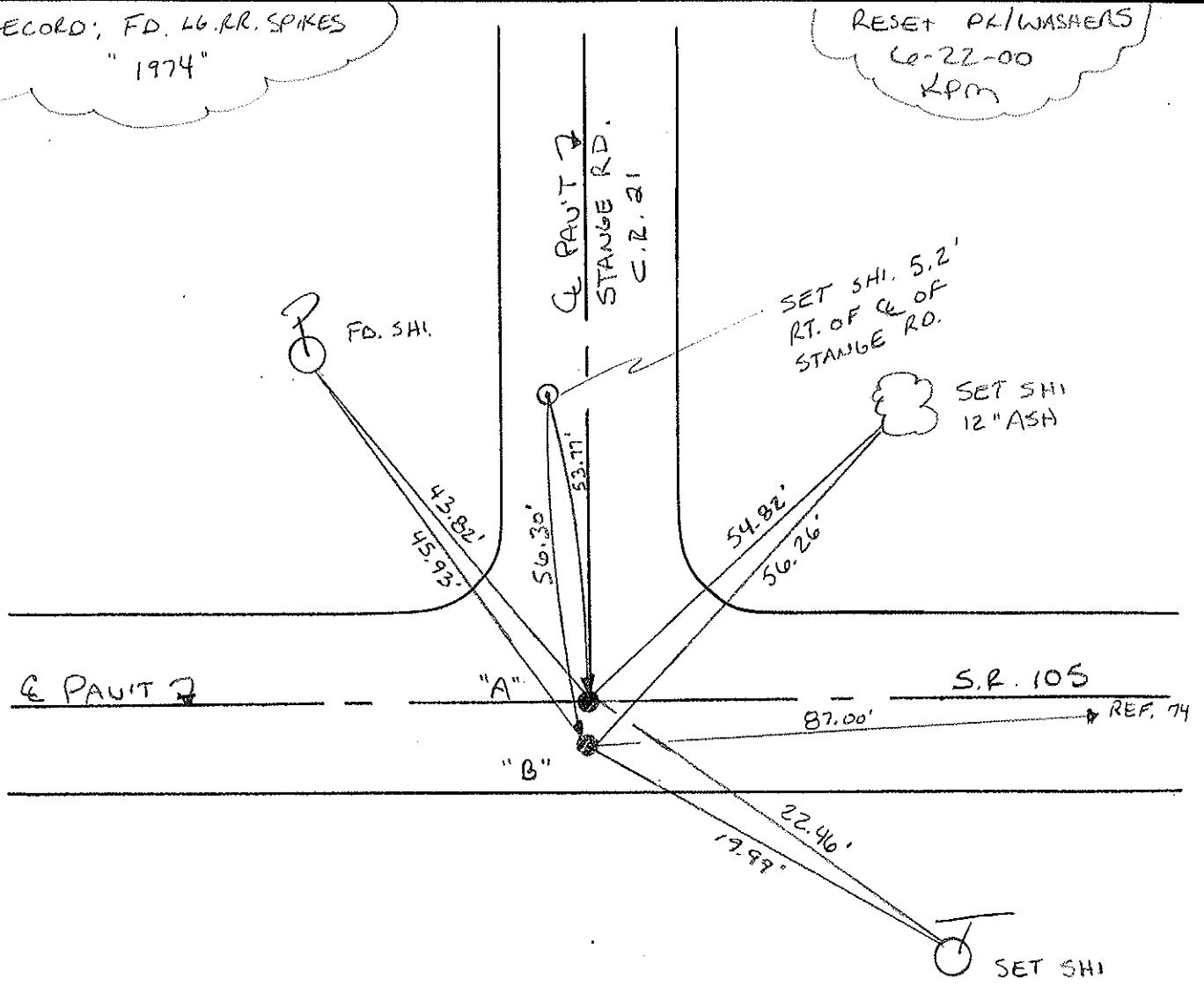
^{A=10.2'}
^{B=7.3'} TO RT EDGE PAVEMENT

S.L.M. A & B = 313 + 50



RECORD; FD. LG. R.R. SPIKES
 "1974"

RESET PL/WASHERS
 6-22-00
 KPM



O.D.O.T. DISTRICT 2 SURVEY OFFICE

PERSONNEL

REFERENCE NO. 73

SHEET OF

NOTES Cronin

DRAWN 5/25/88

H.C. Ripple

DATE 5/26/87

R.C. Barbour

WEATHER sunny

Geyman

TEMP. 85°

ROUTE #105

COUNTY Ottawa

TOWNSHIP Harris

SECTION 9

T 6 N R 14 E

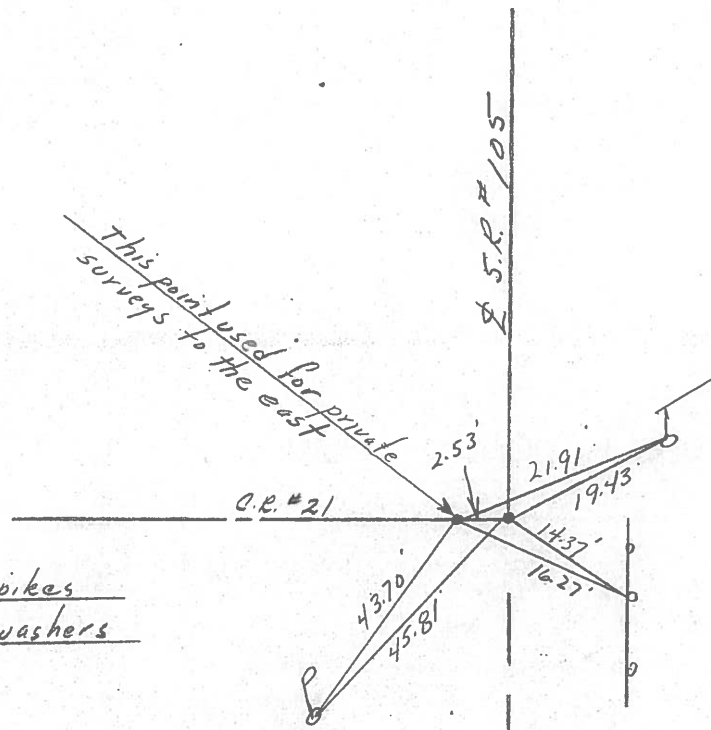
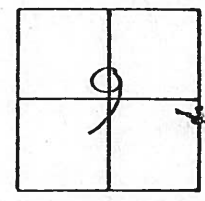
TYPE MONUMENT P.K.s & washers

ON SURFACE - BELOW

LEFT - PAV'T. - RIGHT 2.5

TO EDGE PAVEMENT

S.L.M. 312+97.50



P.K.s & R.R. spikes
below P.K.s & washers

PERSONNEL TITLE PERSONNEL TITLE

COUNTY Ottawa DATE 4-17-74

S. R. 105 WEATHER Fair

SEC. 9 & 10 TEMP. 50°

DESCRIPTION Harris Twp.

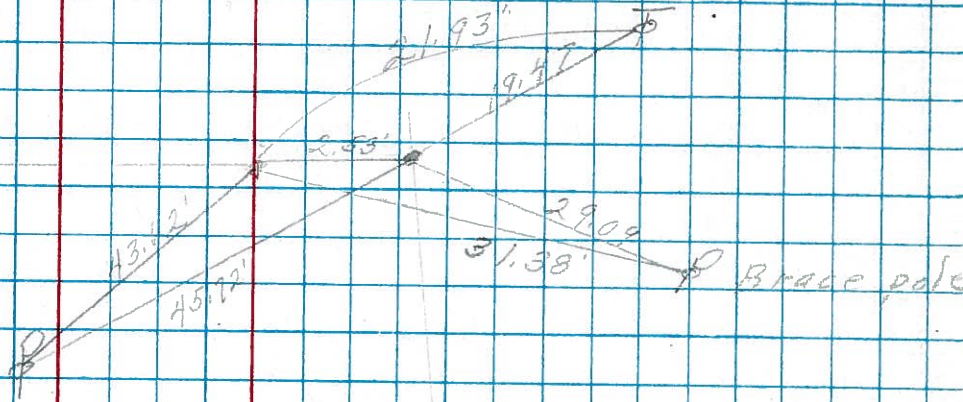
JOB NO.

LEFT CENTER LINE RIGHT

312+97.5

Fd. R.R. spk. on top
C.C. Rd. # 21
North

73



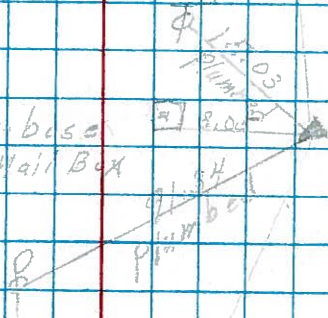
PI

311+30
Set Iron Rod
1' down
E = 22'

72

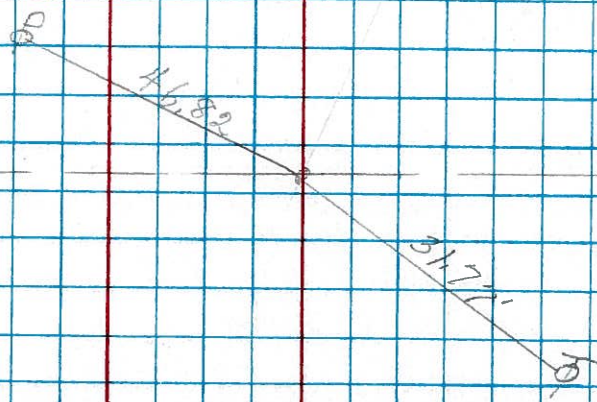
Conc base for Mail Box

cut in the field



306+61
Fd. R.R. spk
2" down

71



PERSONNEL	TITLE	PERSONNEL	TITLE	COUNTY	DATE
<u>Schneider</u>		<u>Potts</u>		<u>Ottawa</u>	<u>7-8-68</u>
<u>Mosser</u>				S. R.	WEATHER
<u>Barbour</u>				<u>105</u>	<u>Fair</u>
<u>Reidling</u>				SEC.	TEMP.
				<u>San. Co. Line to Oak Harbor</u>	<u>80°</u>
DESCRIPTION	Ties for Control Points			JOB NO.	
	LEFT	CENTER LINE	RIGHT		

