

O.D.O.T. DISTRICT 2 SURVEY OFFICE (USE ONLY)

PERSONNEL

REFERENCE NO. 73 A

SHEET 55 OF 63

NOTES RHOADES
 H.C. O'DONNELL
 R.C. MILLER

DATE 7/31/19
 WEATHER CLOUDY
 TEMP. 72°

ROUTE SR 105
 COUNTY OTTAWA
 TOWNSHIP HARRIS
 SECTION 10
 T 6 N R 14 E

DWG BY BALBAUGH PID 92131

TYPE MONUMENT P.K.NAIL

ON SURFACE - ~~BELOW~~ ON

OFFSET \varnothing PAVEMENT 3.1' ~~LT~~ : RT

7.5' TO RT EDGE PAVEMENT

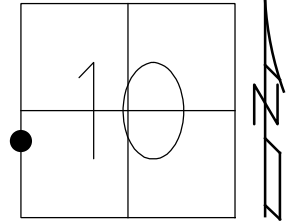
STATION: 312+73.84

HORZ.DATUM: NAD83 2011

GEOID: 2012A

GRID: NORTHING: 665985.271

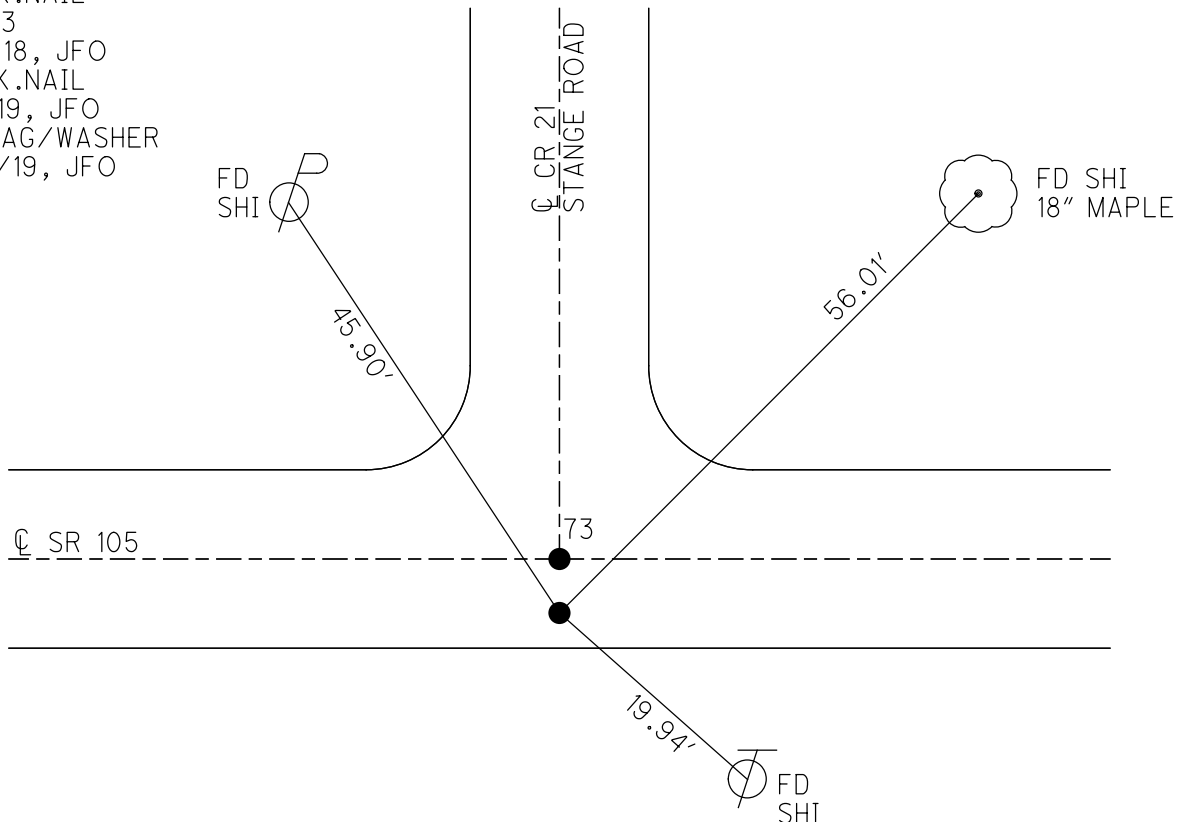
EASTING: 17655444.869



RECORD:

- FD LG.R.R.SPIKE
- 1974
- FD LG.R.R.SPIKE
- 4/19/00, MC
- SET P.K./WASHER
- 6/22/00, KPM
- FD P.K.NAIL
- REFA73
- 4/27/18, JFO
- FD P.K.NAIL
- 7/31/19, JFO
- SET MAG/WASHER
- 12/23/19, JFO

DIST.
 73-73A= 2.54'
 73-74= 86.91'



O.D.O.T. DISTRICT 2 SURVEY OFFICE

PERSONNEL

REFERENCE NO. 73

SHEET 44 OF 96

NOTES K. MOSER

H.C. M. CANTERBURY

R.C. M. BARNHISEL

DATE 4-19-00

WEATHER CLOUDY

TEMP. +60°F

ROUTE S.R. 105

COUNTY OTTAWA

TOWNSHIP HARRIS

SECTION 10

T6 N R 14 E

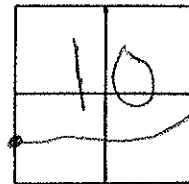
TYPE MONUMENT LG. R.R. SPIKES

ON SURFACE - ~~BELOW~~ SURFACE

~~EST - C PAV'T.~~ - RIGHT A=0.5' B=3.1'

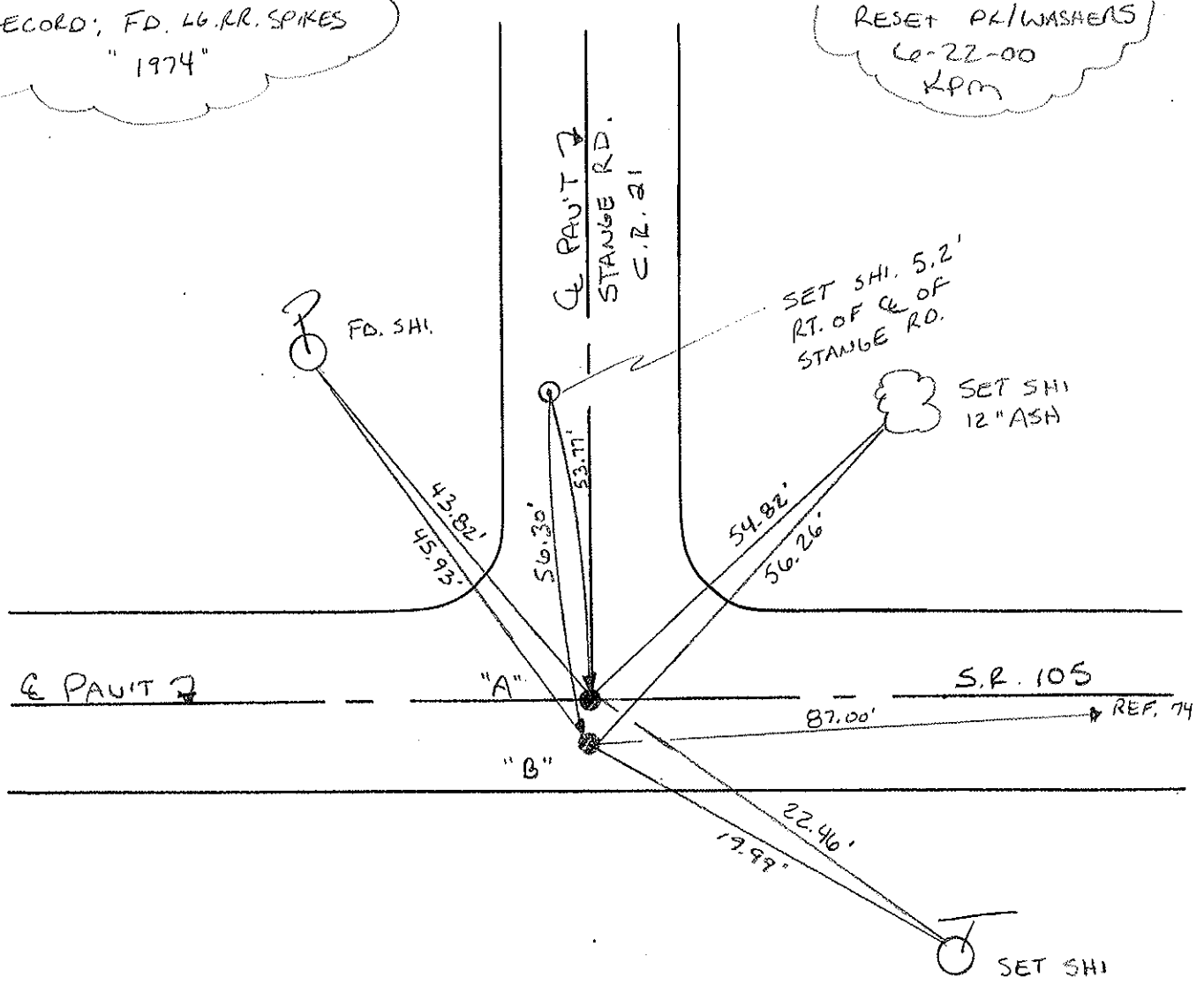
^{A=10.2'}
^{B=7.3'} TO RT EDGE PAVEMENT

S.L.M. A & B = 313 + 50



RECORD; FD. LG. R.R. SPIKES
"1974"

RESET PL/WASHERS
6-22-00
KPM



O.D.O.T. DISTRICT 2 SURVEY OFFICE

PERSONNEL

REFERENCE NO. 73

SHEET OF

NOTES Cronin

DRAWN 5/25/88

H.C. Ripple

DATE 5/26/87

R.C. Barbour

WEATHER sunny

Geyman

TEMP. 85°

ROUTE #105

COUNTY Ottawa

TOWNSHIP Harris

SECTION 9

T 6 N R 14 E

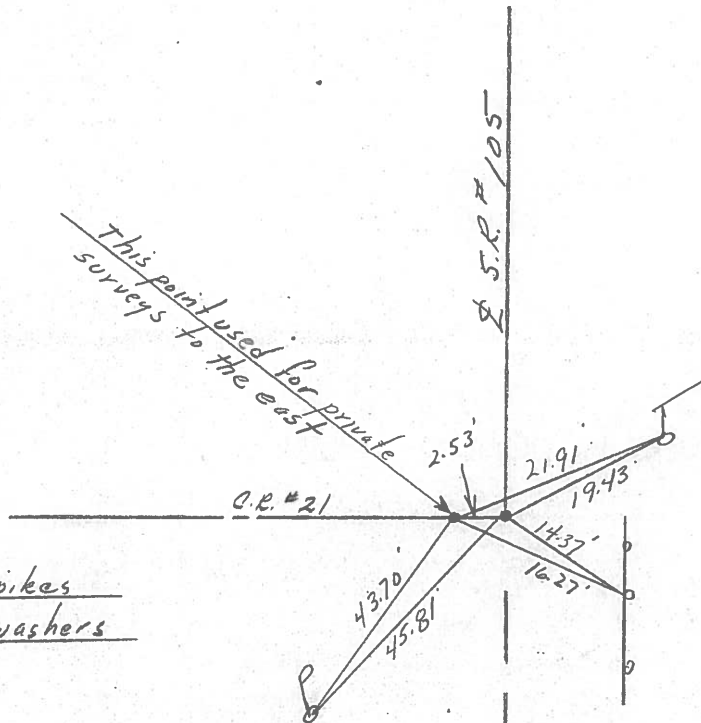
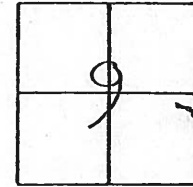
TYPE MONUMENT P.K.s & washers

ON SURFACE - BELOW

LEFT - PAV'T. - RIGHT 2.5

TO EDGE PAVEMENT

S.L.M. 312+97.50



P.K.s & R.R. spikes
below P.K.s & washers

PERSONNEL TITLE PERSONNEL TITLE

COUNTY Ottawa DATE 4-17-74

S. R. 105 WEATHER Fair

SEC. 9 & 10 TEMP. 50°

DESCRIPTION Harris Twp.

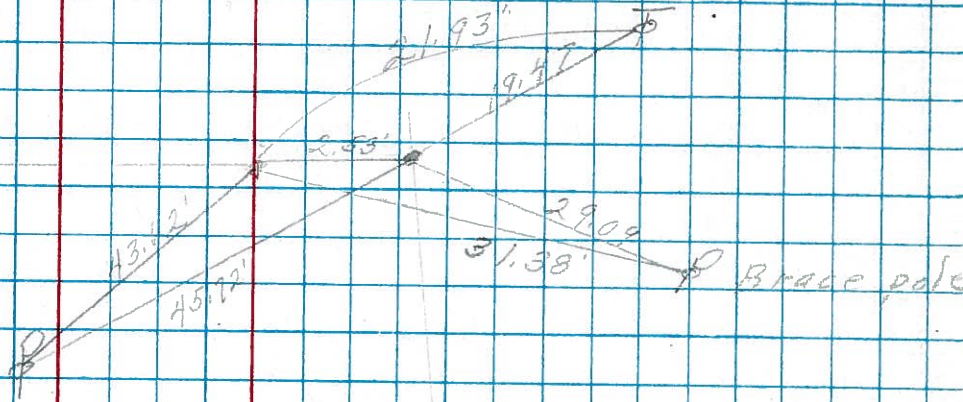
JOB NO.

LEFT CENTER LINE RIGHT

312+97.5

Fd. R.R. spk. on top
Con. Rd. # 21
North

73



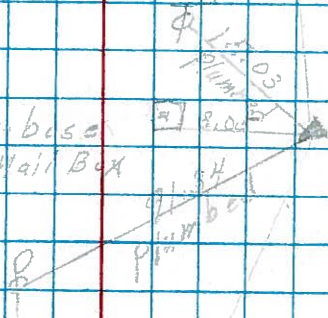
PI

311+30
Set Iron Rod
1' down
E = 22'

72

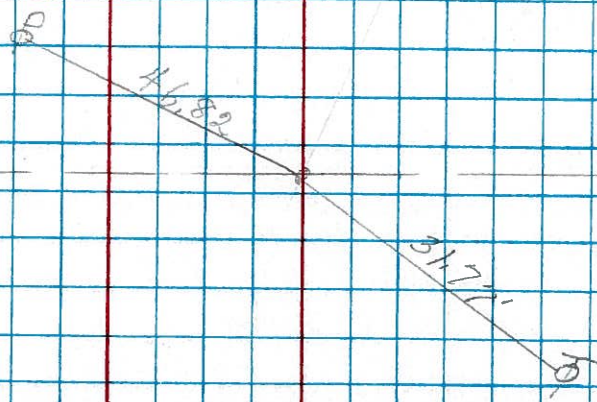
Conc base for Mail Box

cut in the field



306+61
Fd. R.R. spk
2" down

71



PERSONNEL	TITLE	PERSONNEL	TITLE	COUNTY	DATE
<u>Schneider</u>		<u>Potts</u>		<u>Ottawa</u>	<u>7-8-68</u>
<u>Mosser</u>				S. R. <u>105</u>	WEATHER <u>Fair</u>
<u>Barbour</u>				SEC. <u>San. Co. Line to Oak Harbor</u>	TEMP. <u>80°</u>
<u>Reidling</u>					
DESCRIPTION	<u>Ties for Control Points</u>			JOB NO.	
	LEFT	CENTER LINE	RIGHT		

