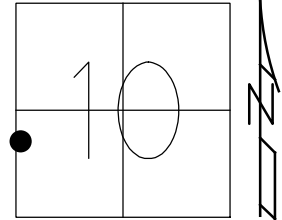
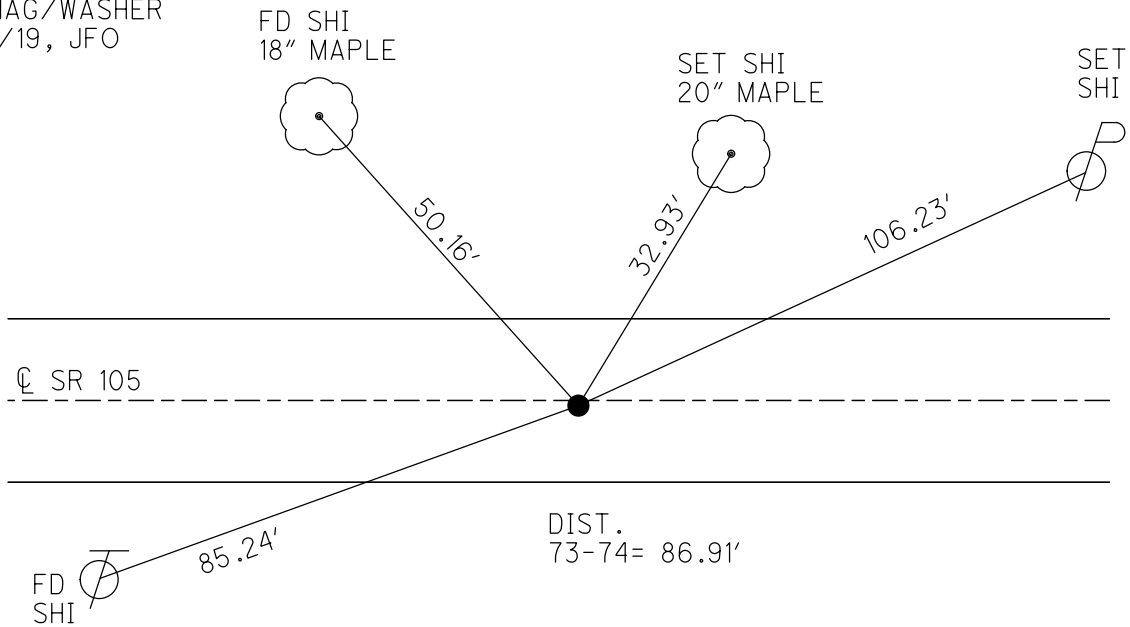


O.D.O.T. DISTRICT 2 SURVEY OFFICE (USE ONLY)

PERSONNEL	REFERENCE NO. <u>74</u>	SHEET <u>56</u> OF <u>63</u>
NOTES <u>RHOADES</u>	DATE <u>7/31/19</u>	ROUTE <u>SR 105</u>
H.C. <u>O'DONNELL</u>	WEATHER <u>CLOUDY</u>	COUNTY <u>OTTAWA</u>
R.C. <u>MILLER</u>	TEMP. <u>72°</u>	TOWNSHIP <u>HARRIS</u>
		SECTION <u>10</u>
DWG BY <u>BALBAUGH</u>	PID <u>92131</u>	T <u>6</u> N R <u>14</u> E
TYPE MONUMENT <u>P.K.NAIL</u>		
ON SURFACE - <del>BELOW</del> <u>ON</u>		
OFFSET <u>0.5'</u> <del>LT</del> : RT		
<u>10.2'</u> TO RT EDGE PAVEMENT		
STATION: <u>313+60.74</u>		
HORZ.DATUM: <u>NAD83 2011</u>	GEOID: <u>2012A</u>	
GRID: NORTHING: <u>665990.173</u>	EASTING: <u>1765531.759</u>	



RECORD:  
 FD LG.R.R.SPIKE  
 4/18/00, MC  
 SET P.K./WASHER  
 6/22/00, KPM  
 FD P.K.NAIL  
 REF74  
 4/27/18, JFO  
 FD P.K.NAIL  
 7/31/19, JFO  
 SET MAG/WASHER  
 12/23/19, JFO



# O.D.O.T. DISTRICT 2 SURVEY OFFICE

PERSONNEL

REFERENCE NO. 74

SHEET 45 OF 96

NOTES K. Moser

H.C. M. CANTERBURY

DATE 4-18-00

ROUTE S.R. 105

R.C. M. BARNHISEL

WEATHER Cloudy

COUNTY OTTAWA

TEMP. +55 °F

TOWNSHIP HARRIS

SECTION 10

T6 N R 14 E

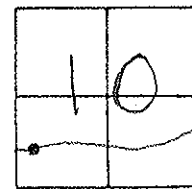
TYPE MONUMENT lg. R.R. Spike

ON SURFACE - ~~BELOW~~ SURFACE

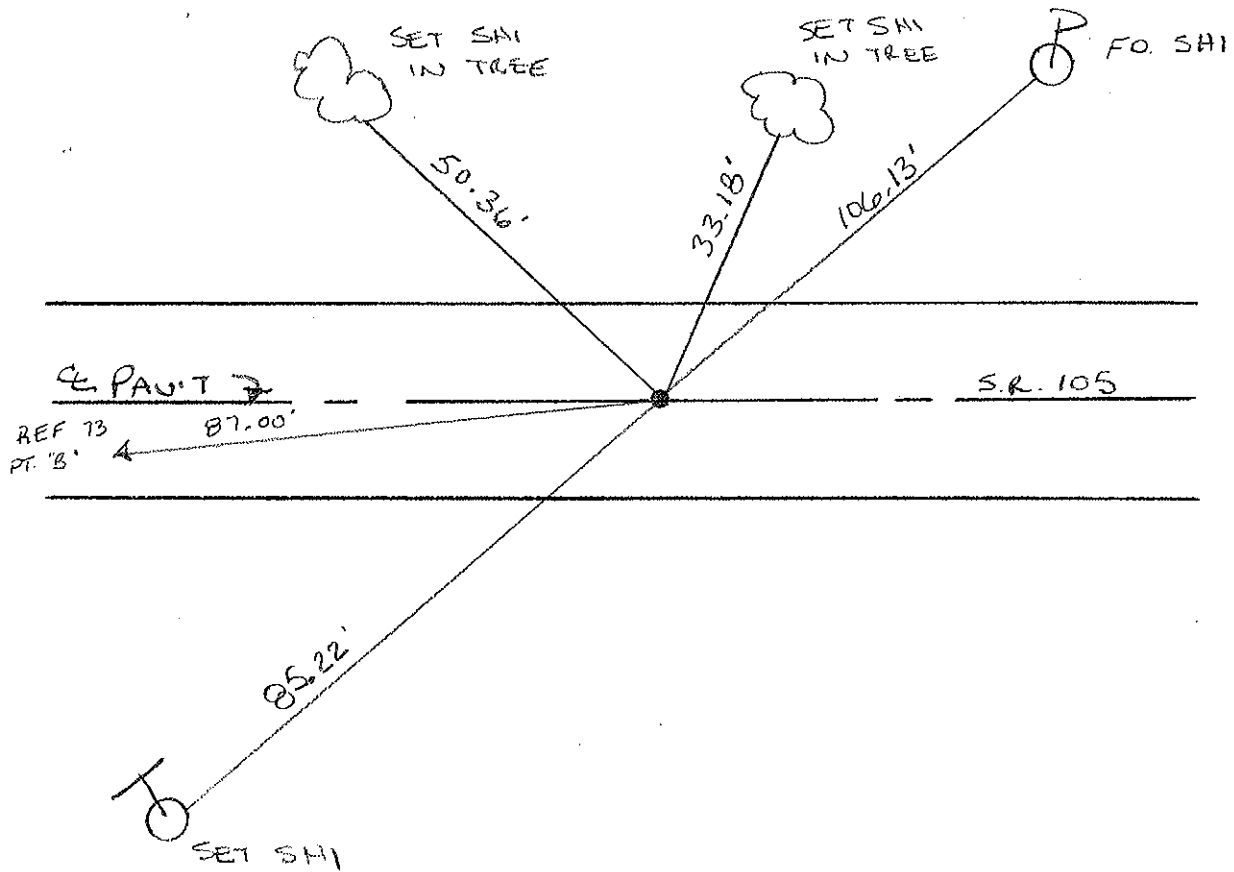
~~LEFT~~ C PAV'T. - RIGHT D.5 RT.

10.2 TO RT. EDGE PAVEMENT

S.L.M. 314 + 38



RESET PR/WASHER  
6-22-00  
K.P.M



# O.D.O.T. DISTRICT 2 SURVEY OFFICE

PERSONNEL

REFERENCE NO. 74

SHEET      OF     

NOTES Cronin

DRAWN 6/01/88

H.C. Ripple

DATE 8/06/87

ROUTE #105

R.C. Barbour

WEATHER sunny

COUNTY Ottawa

Geyman

TEMP. 70°

TOWNSHIP Harris

SECTION 10

T 6 N R 14 E

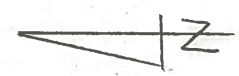
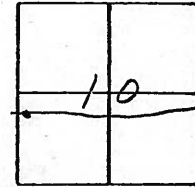
TYPE MONUMENT R.R. spike

ON SURFACE - BELOW 4"

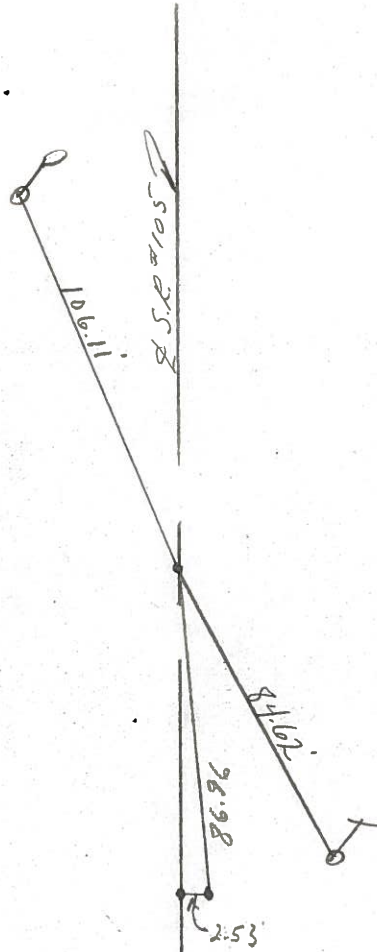
LEFT - ☉ PAV'T. - RIGHT     

     TO      EDGE PAVEMENT

S.L.M. 313484



This may be a  
P.T.



PERSONNEL TITLE PERSONNEL TITLE

COUNTY Ottawa

DATE 4-17-74

S. R. 105

WEATHER

SEC. 10

TEMP.

DESCRIPTION Harris Twp

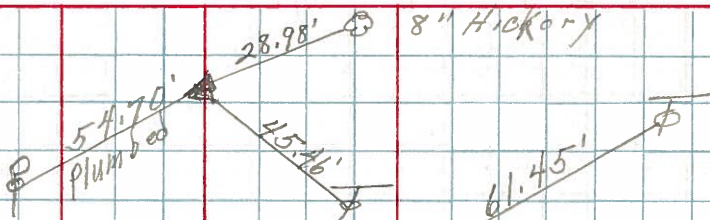
JOB NO.

LEFT

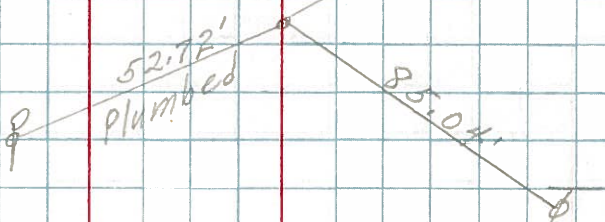
CENTER LINE

RIGHT

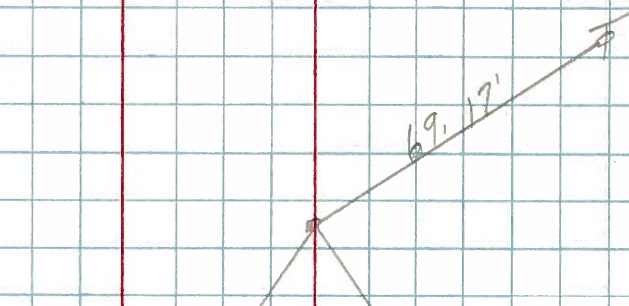
P.T. H.  
323+21  
set P.K. Nail  
77



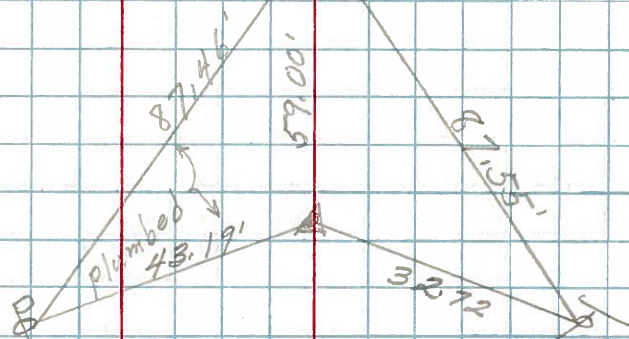
319+17  
Fd. R.R. spk.  
on Top  
76



317+07  
Fd. R.R. spk.  
on Top



P.T.  
317+08  
Fd. R.R. spk.  
on Top  
75



P.T. (?) 313+84  
Fd. R.R. spk.  
on Top  
74

