

O.D.O.T. DISTRICT 2 SURVEY OFFICE (USE ONLY)

PERSONNEL _____ REFERENCE NO. 75 A SHEET 58 OF 63
 NOTES RHOADES DATE 7/31/19 ROUTE SR 105
 H.C. O'DONNELL WEATHER CLOUDY COUNTY OTTAWA
 R.C. MILLER TEMP. 72° TOWNSHIP HARRIS
 _____ SECTION 10
 DWG BY BALBAUGH PID 92131 T 6 N R 14 E

TYPE MONUMENT P.K./WASHER

ON SURFACE - ~~BELOW~~ ON

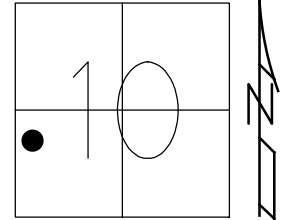
OFFSET 0.2' ~~±~~ : RT

9.5' TO RT EDGE PAVEMENT

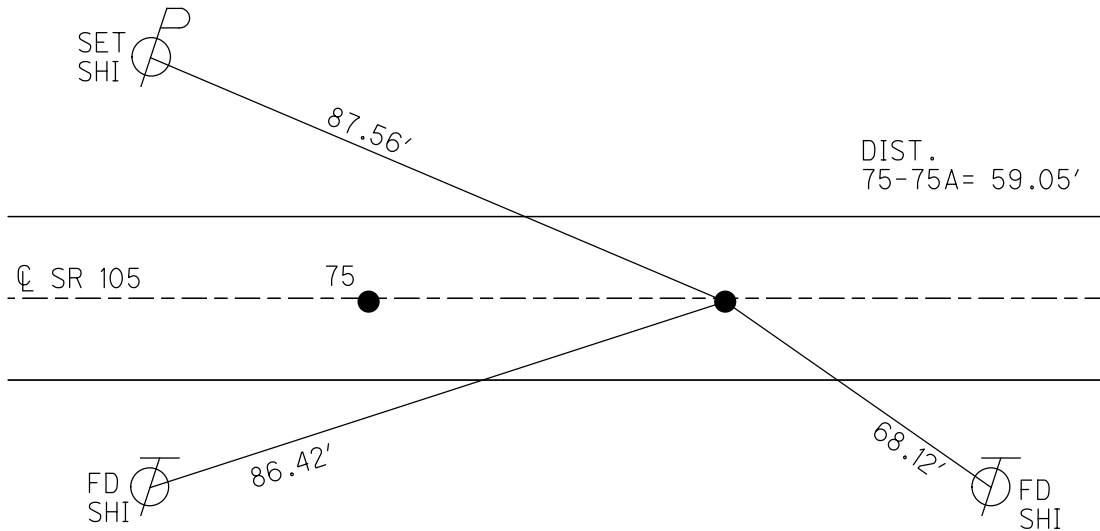
STATION: 317+43.27

HORIZ.DATUM: NAD83 2011 GEOID: 2012A

GRID: NORTHING: 666011.585 EASTING: 1765913.913



RECORD:
 FD LG.R.R.SPIKE
 4/19/00, MC
 SET P.K./WASHER
 6/23/00, KPM
 FD P.K./WASHER
 REFA75
 4/30/18, JFO
 FD P.K./WASHER
 7/31/19, JFO
 SET MAG/WASHER
 12/23/19, JFO



O.D.O.T. DISTRICT 2 SURVEY OFFICE

PERSONNEL

REFERENCE NO. 75

SHEET 46 OF 96

NOTES K. Moser

H.C. M. CANTERBURY

DATE 4-19-00

ROUTE S.R. 105

R.C. M. BARNHISEL

WEATHER CLOUDY

COUNTY OTTAWA

TEMP. +60°F

TOWNSHIP HARRIS

SECTION 10

T6 N R 14 E

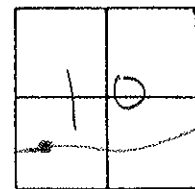
TYPE MONUMENT LS. R.R. SPIKES

ON SURFACE - BELOW SURFACE

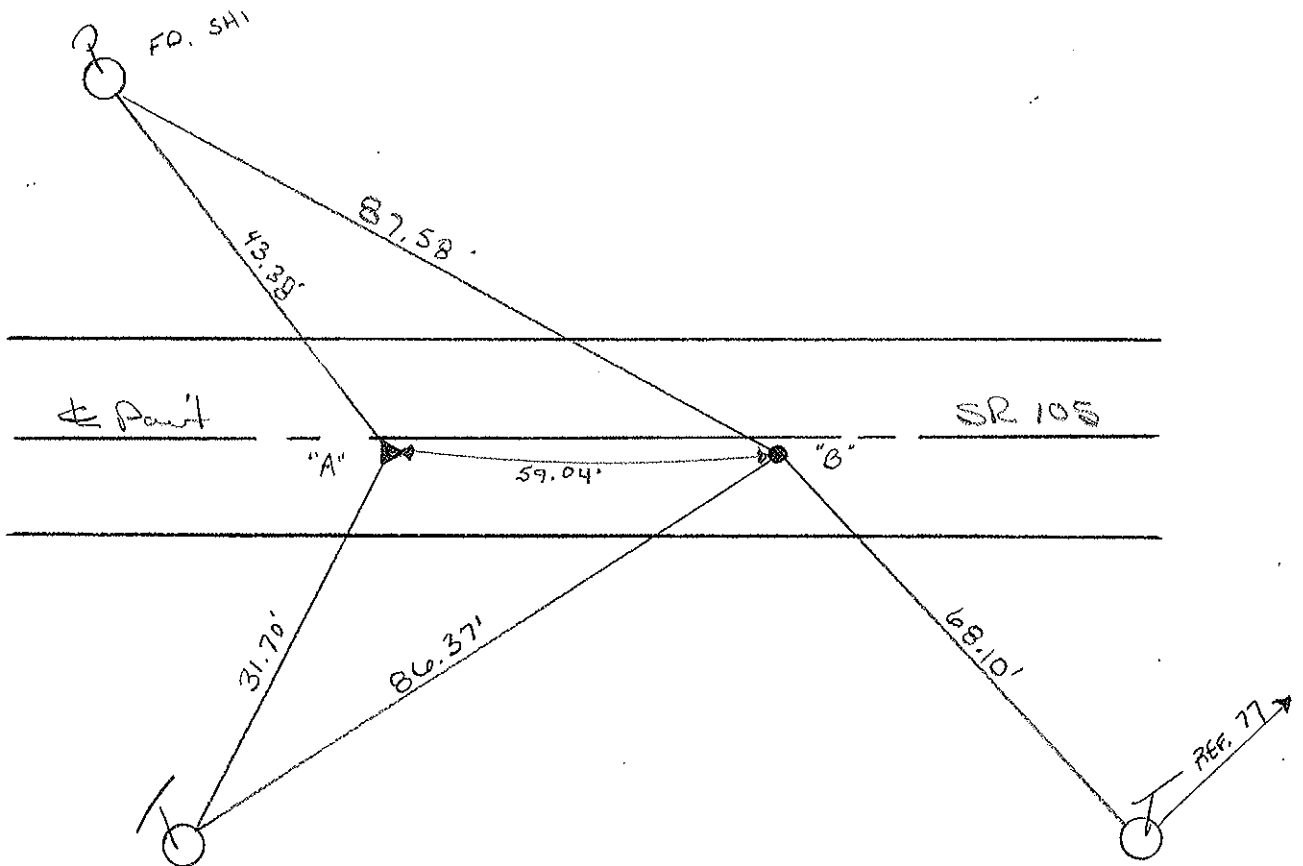
LEFT - C PAV'T. - RIGHT A-0.2' B-0.2'

^{A-9.5'}
_{B-9.5'} TO RT. EDGE PAVEMENT

S.L.M. A=317+63 B=318+22



RESET PK/WASHER
6-23-00
KPM



PERSONNEL TITLE PERSONNEL TITLE

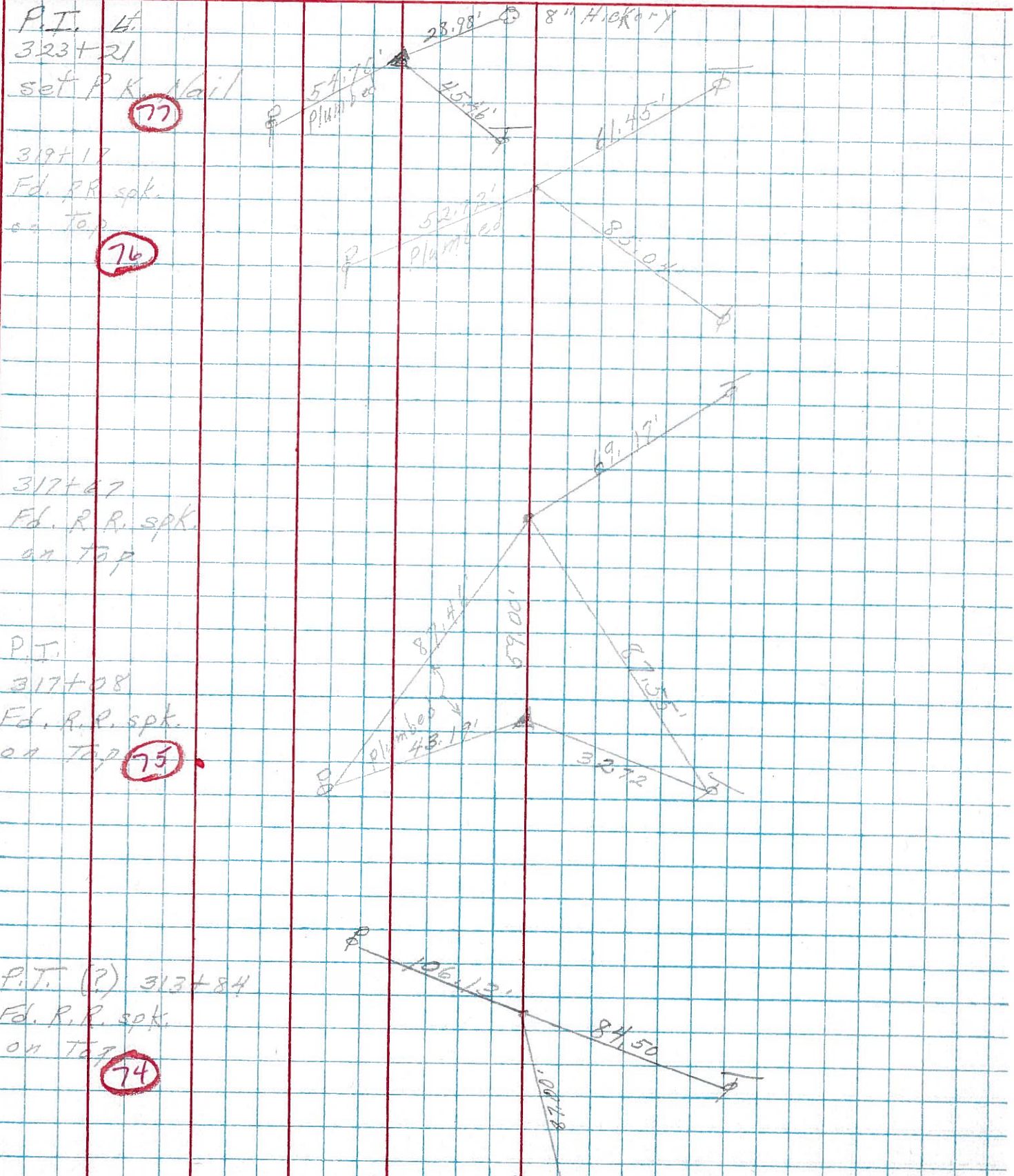
COUNTY Ottawa DATE 4-17-74

S. R. 105 WEATHER

SEC. 10 TEMP.

DESCRIPTION Harris Twp. JOB NO.

LEFT CENTER LINE RIGHT



P.I. Lt.
323+21
set P.K. Nail
77

319+17
Fd. R.R. spk.
on top
76

317+47
Fd. R.R. spk.
on top

P.I.
317+08
Fd. R.R. spk.
on top
75

P.I. (?) 313+84
Fd. R.R. spk.
on top
74

