

O.D.O.T. DISTRICT 2 SURVEY OFFICE (USE ONLY)

PERSONNEL

REFERENCE NO. 77

SHEET 60 OF 63

NOTES RHOADES

DATE 7/31/19

ROUTE SR 105

H.C. O'DONNELL

WEATHER CLOUDY

COUNTY OTTAWA

R.C. MILLER

TEMP. 72°

TOWNSHIP HARRIS

SECTION 10

DWG BY BALBAUGH PID 92131

T 6 N R 14 E

TYPE MONUMENT P.K./WASHER

ON SURFACE - ~~BELOW~~ ON

OFFSET  $\odot$  PAVEMENT 3.6' ~~LT~~ : RT

6.2' TO RT EDGE PAVEMENT

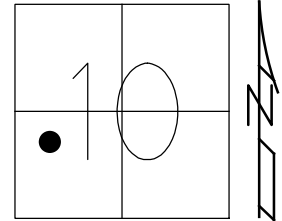
STATION: 322+97.65

HORZ.DATUM: NAD83 2011

GEOID: 2012A

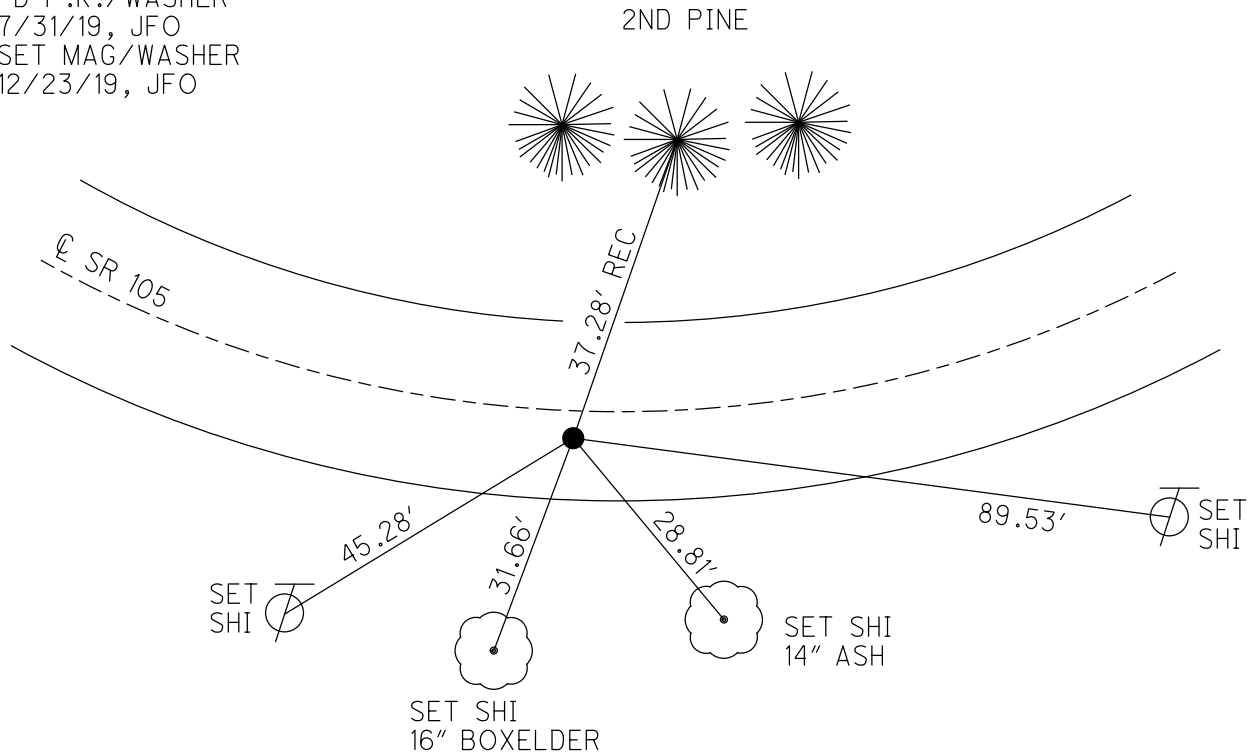
GRID: NORTHING: 666039.066

EASTING: 1766467.600



RECORD:

- FD P.K./WASHER
- 4/19/00, MC
- SET P.K./WASHER
- 6/23/00, KPM
- FD P.K./WASHER
- REF77
- 4/30/18, JFO
- FD P.K./WASHER
- 7/31/19, JFO
- SET MAG/WASHER
- 12/23/19, JFO



# O.D.O.T. DISTRICT 2 SURVEY OFFICE

PERSONNEL

NOTES K. Moser

H.C. M. CAMBERBURY

R.C. M. BARNISEL

REFERENCE NO. 77

DATE 4-19-00

WEATHER CLOUDY

TEMP. +60°F

SHEET 48 OF 96

ROUTE S.R. 105

COUNTY OTTAWA

TOWNSHIP HARRIS

SECTION 10

T6 N R 14 E

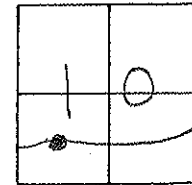
TYPE MONUMENT PK/WASHER

ON SURFACE - ~~BELOW~~ SURFACE

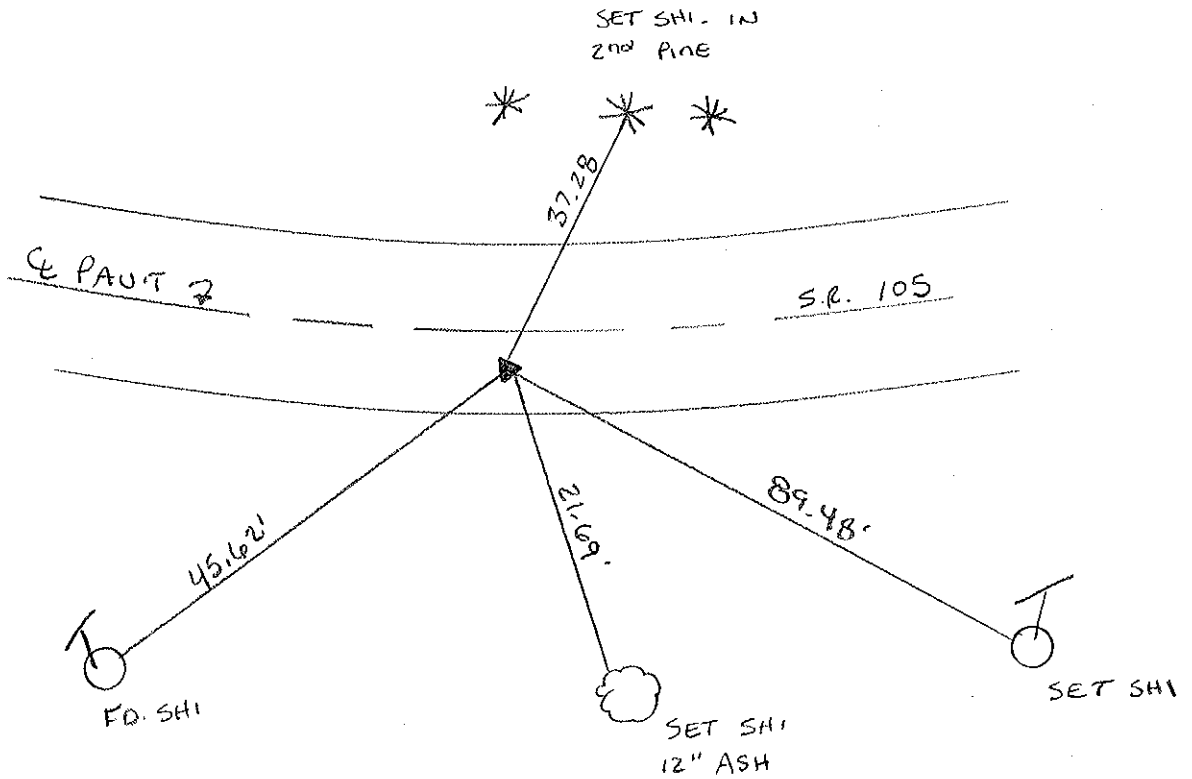
~~LEFT~~ PAV'T. - RIGHT 3.6' RT.

6.2 TO RT EDGE PAVEMENT

S.L.M. 323+78



RESET PK/WASHER  
6-23-00  
KPM



O.D.O.T. DISTRICT 2 SURVEY OFFICE

PERSONNEL

REFERENCE NO. 77

SHEET      OF     

NOTES Cronin

H.C. Ripple

R.C. Barbour

Geyman

DATE 8/06/87

WEATHER sunny

TEMP. 70°

ROUTE #105

COUNTY Ottawa

TOWNSHIP Harris

SECTION 10

T 6 N R 14 E

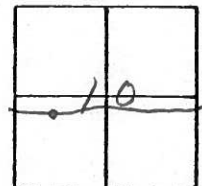
TYPE MONUMENT P.K. washer

ON SURFACE - BELOW 1 1/2"

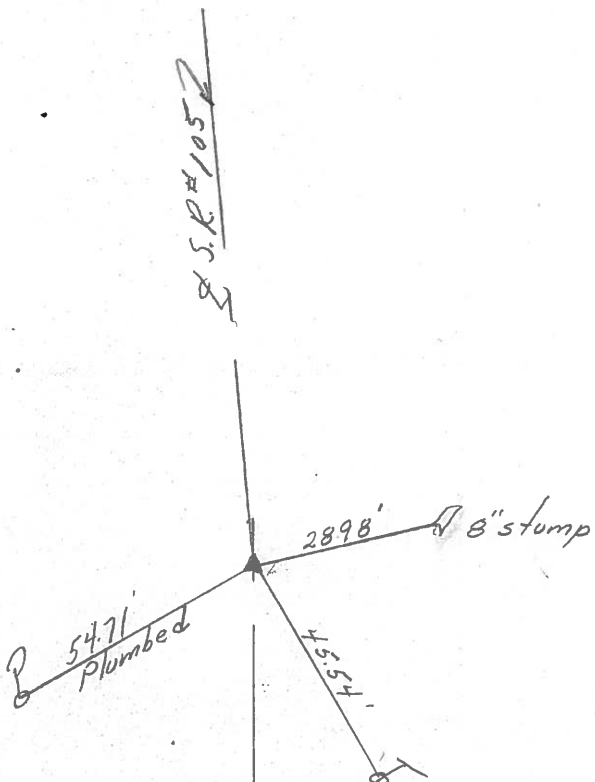
LEFT - & PAV'T. - RIGHT 3 1/2'

TO      EDGE PAVEMENT

S.L.M. 323 + 21



P.K. below P.K. washer



PERSONNEL TITLE PERSONNEL TITLE

COUNTY Ottawa

DATE 4-17-74

S. R. 105

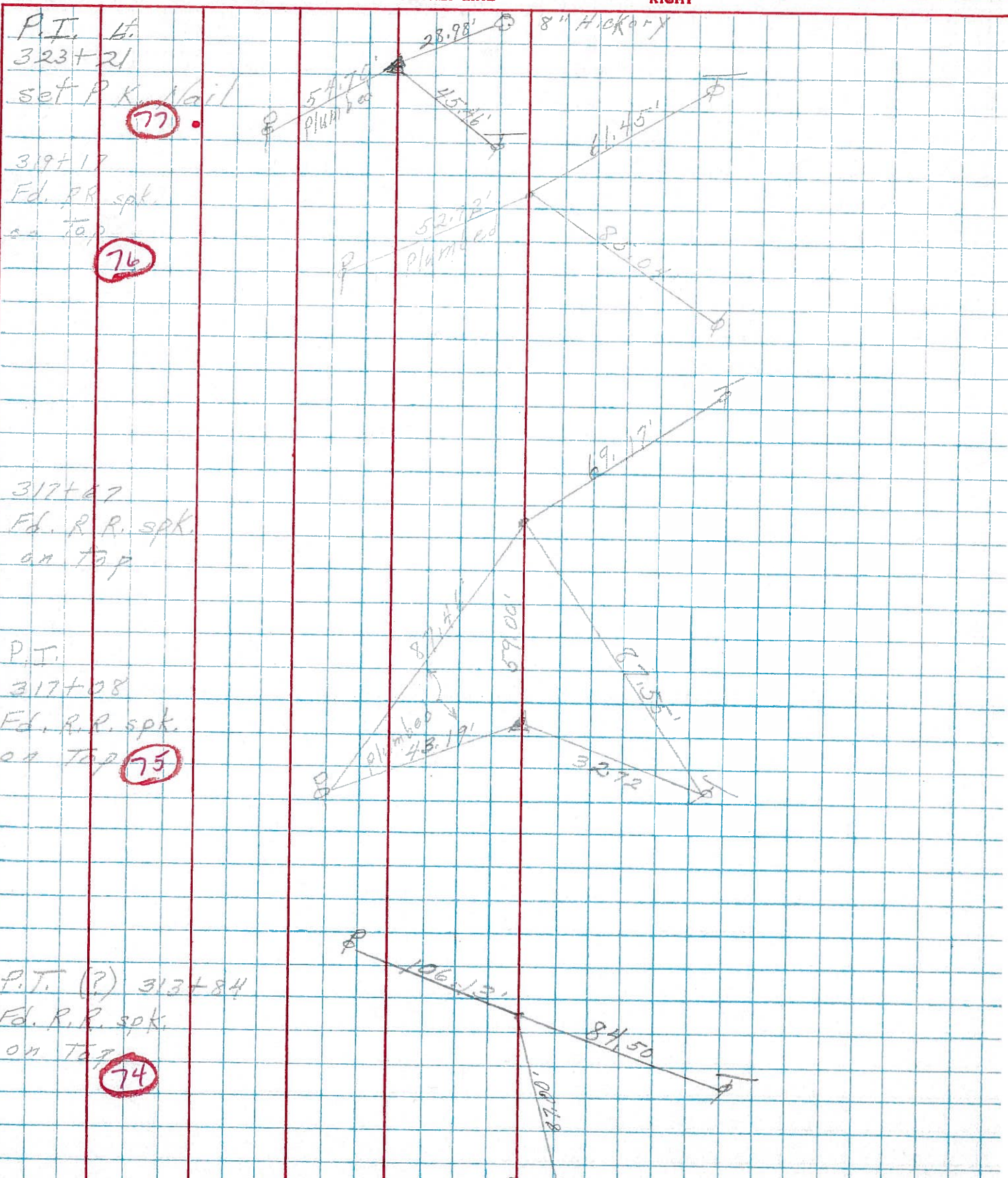
WEATHER

SEC. 10

TEMP.

DESCRIPTION Harris Twp.

JOB NO.



P.T. H.  
323+21

set P.K. Nail  
(77)

319+17  
Fd. R.R. spk.  
on top  
(76)

317+67  
Fd. R.R. spk.  
on top

P.T.  
317+08  
Fd. R.R. spk.  
on top  
(75)

P.T. (?) 313+84  
Fd. R.R. spk.  
on top  
(74)