

O.D.O.T. DISTRICT 2 SURVEY OFFICE (USE ONLY)

PERSONNEL

REFERENCE NO. 78

SHEET 61 OF 63

NOTES RHOADES
 H.C. O'DONNELL
 R.C. MILLER

DATE 7/31/19
 WEATHER CLOUDY
 TEMP. 72°

ROUTE SR 105
 COUNTY OTTAWA
 TOWNSHIP HARRIS
 SECTION 10
 T 6 N R 14 E

DWG BY BALBAUGH PID 92131

TYPE MONUMENT P.K./WASHER

ON SURFACE - ~~BELOW~~ ON

OFFSET \odot PAVEMENT ON ~~LT~~ : ~~RT~~

11.0' TO RT EDGE PAVEMENT

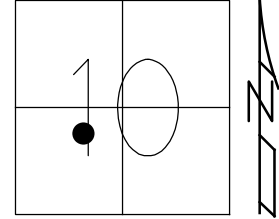
STATION: 329+46.66

HORZ.DATUM: NAD83 2011

GEOID: 2012A

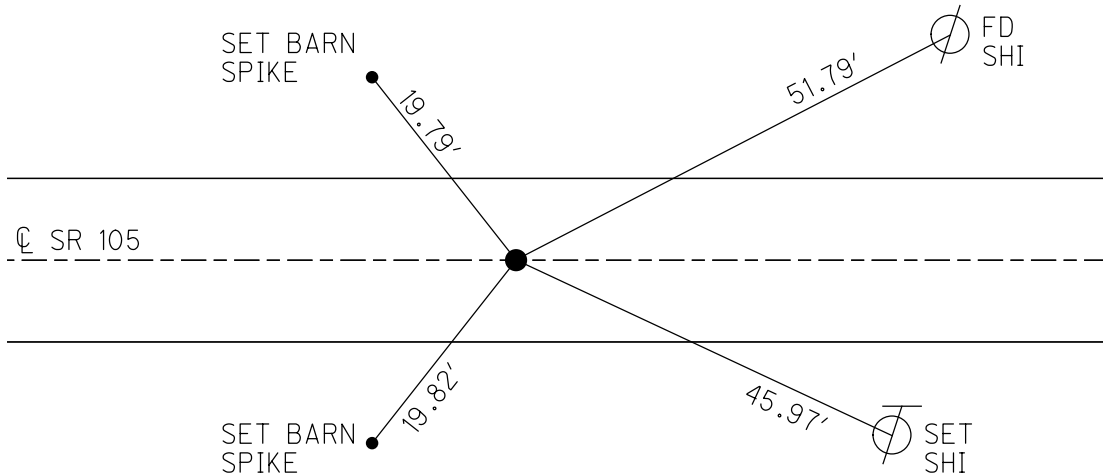
GRID: NORTHING: 666117.466

EASTING: 1767111.886



RECORD:

FD LG.R.R.SPIKE
 4/19/00, MC
 SET P.K./WASHER
 6/23/00, KPM
 FD P.K./WASHER
 REF 78
 4/30/18, JFO
 FD P.K./WASHER
 7/31/19, JFO
 SET MAG/WASHER
 12/23/19, JFO



O.D.O.T. DISTRICT 2 SURVEY OFFICE

PERSONNEL

REFERENCE NO. 78

SHEET 49 OF 96

NOTES K. MOSER

H.C. M. CANTERBURY

DATE 4-19-00

ROUTE S.R. 105

R.C. M. BARNHISEL

WEATHER CLOUDY

COUNTY OTTAWA

TEMP. +60°F

TOWNSHIP HARRIS

SECTION 10

T6 N R14 E

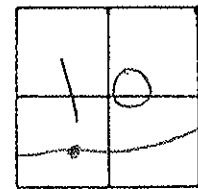
TYPE MONUMENT LG. R.R. SPIKE

ON SURFACE - BELOW 2" Below

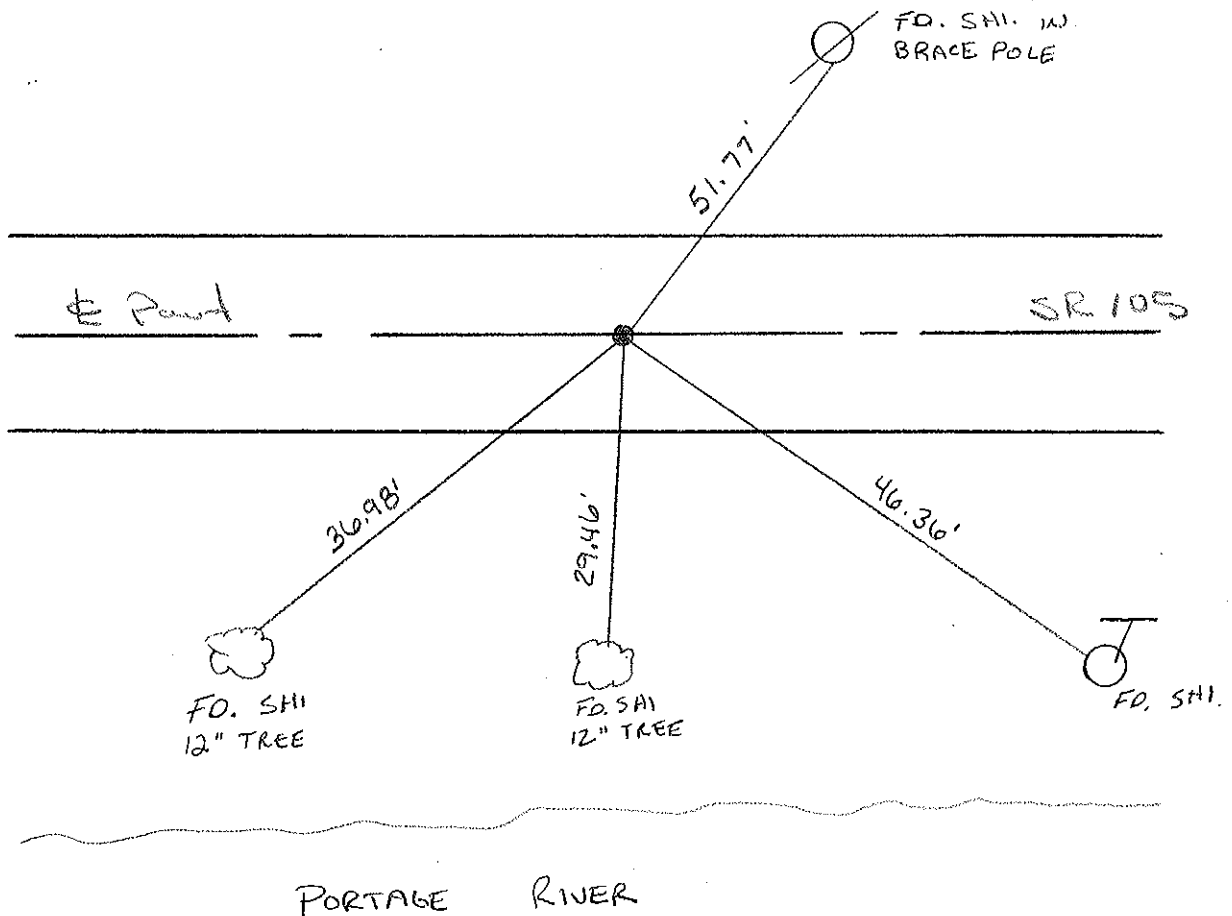
LEFT - ℄ PAV'T. - RIGHT ℄

11.0 TO RT. EDGE PAVEMENT

S.L.M. 330 + 36



RESET PK/WASHER
6-23-00
KPM



PORTAGE RIVER

PERSONNEL TITLE PERSONNEL TITLE

COUNTY Ottawa DATE 4-17-74

S. R. 105 WEATHER Fair

SEC. 10 TEMP. 50°

DESCRIPTION Harris Twp. JOB NO.

