

# O.D.O.T. DISTRICT 2 SURVEY OFFICE

PERSONNEL \_\_\_\_\_ REFERENCE NO. 79 SHEET \_\_\_\_\_ OF \_\_\_\_\_

NOTES Cronin DRAWN 6/01/88

H.C. Ripple DATE 8/06/87 ROUTE #105

R.C. Barbour WEATHER sunny COUNTY Ottawa

Geyman TEMP. 70° TOWNSHIP Harris

SECTION 10

T 6 N 14 E

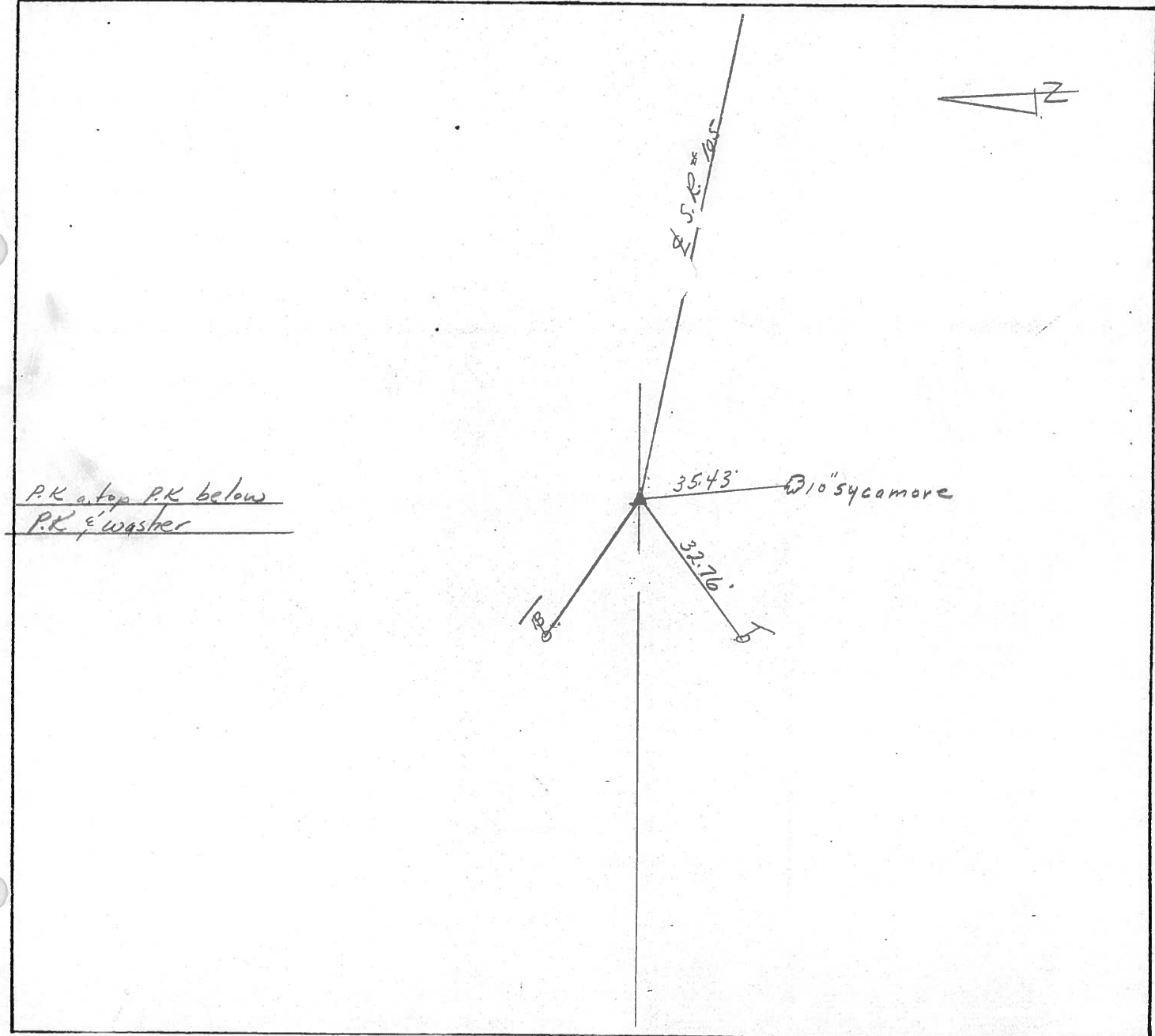
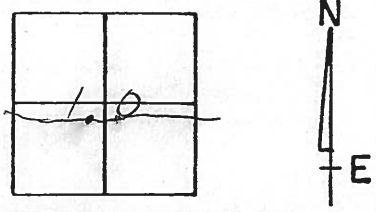
TYPE MONUMENT P.K. & washer

ON SURFACE - BELOW \_\_\_\_\_

LEFT - € PAV'T. - RIGHT 6'

TO \_\_\_\_\_ EDGE PAVEMENT

S.L.M. 330+73



PERSONNEL TITLE PERSONNEL TITLE

COUNTY Ottawa DATE 4-17-74

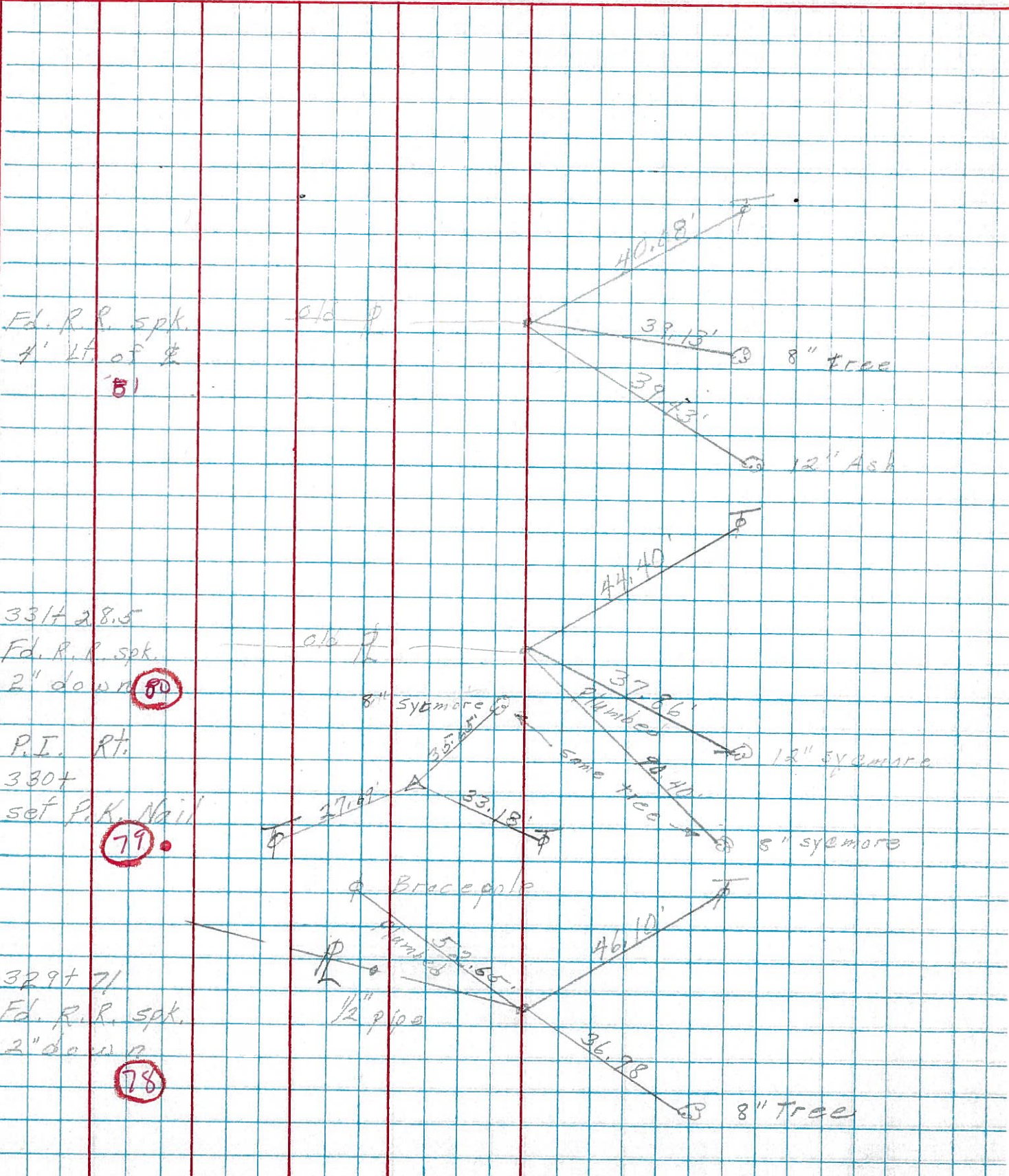
S. R. 105 WEATHER Fair

SEC. 10 TEMP. 50°

DESCRIPTION Harris Twp.

JOB NO.

LEFT CENTER LINE RIGHT



Fd. R.R. spk.  
4' Lt. of #  
81

331+ 28.5  
Fd. R.R. spk.  
2" down 80

P.I. Rt.  
330+  
set P.K. Nail  
79

329+ 71  
Fd. R.R. spk.  
2" down  
78

old p

old p

8" sycamore

Bracepole

1/2" pipe

40.48'

39.13'

39.13'

8" tree

12" Ash

44.40'

37.86'

42.40'

12" sycamore

5" sycamore

46.10'

52.65'

36.78'

8" Tree