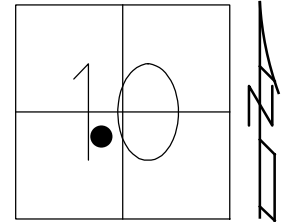


O.D.O.T. DISTRICT 2 SURVEY OFFICE (USE ONLY)

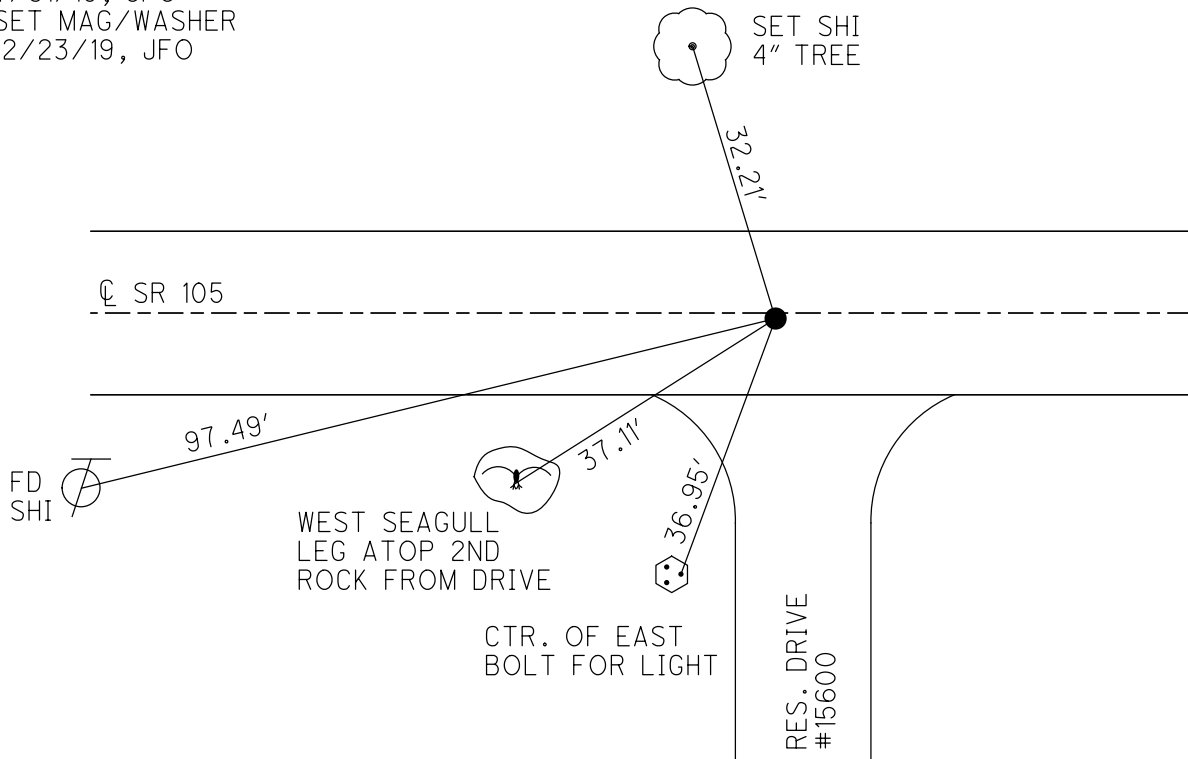
PERSONNEL _____ REFERENCE NO. 82 A SHEET 63 OF 63
 NOTES RHOADES DATE 7/31/19 ROUTE SR 105
 H.C. O'DONNELL WEATHER CLOUDY COUNTY OTTAWA
 R.C. MILLER TEMP. 72° TOWNSHIP HARRIS
 DWG BY BALBAUGH PID 92131 SECTION 10
 T 6 N R 14 E

TYPE MONUMENT P.K./WASHER
 ON SURFACE - ~~BELOW~~ ON _____
 OFFSET \odot PAVEMENT 0.6' ~~LT~~ : RT
9.4' TO RT EDGE PAVEMENT
 STATION: 334+87.23



HORZ. DATUM: NAD83 2011 GEOID: 2012A
 GRID: NORTHING: 666073.6694 EASTING: 1767649.947

RECORD:
 FD P.K./WASHER
 4/19/00, MC
 SET P.K./WASHER
 6/23/00, KPM
 FD P.K./WASHER
 REFA82
 4/30/18, JFO
 FD P.K./WASHER
 7/31/19, JFO
 SET MAG/WASHER
 12/23/19, JFO



82A.

Reset P/L / WASHER
6-23-00
Kfm

335+76
8.6' RI CL
7.4' RT ED

Set 541
4" tree

32.08°

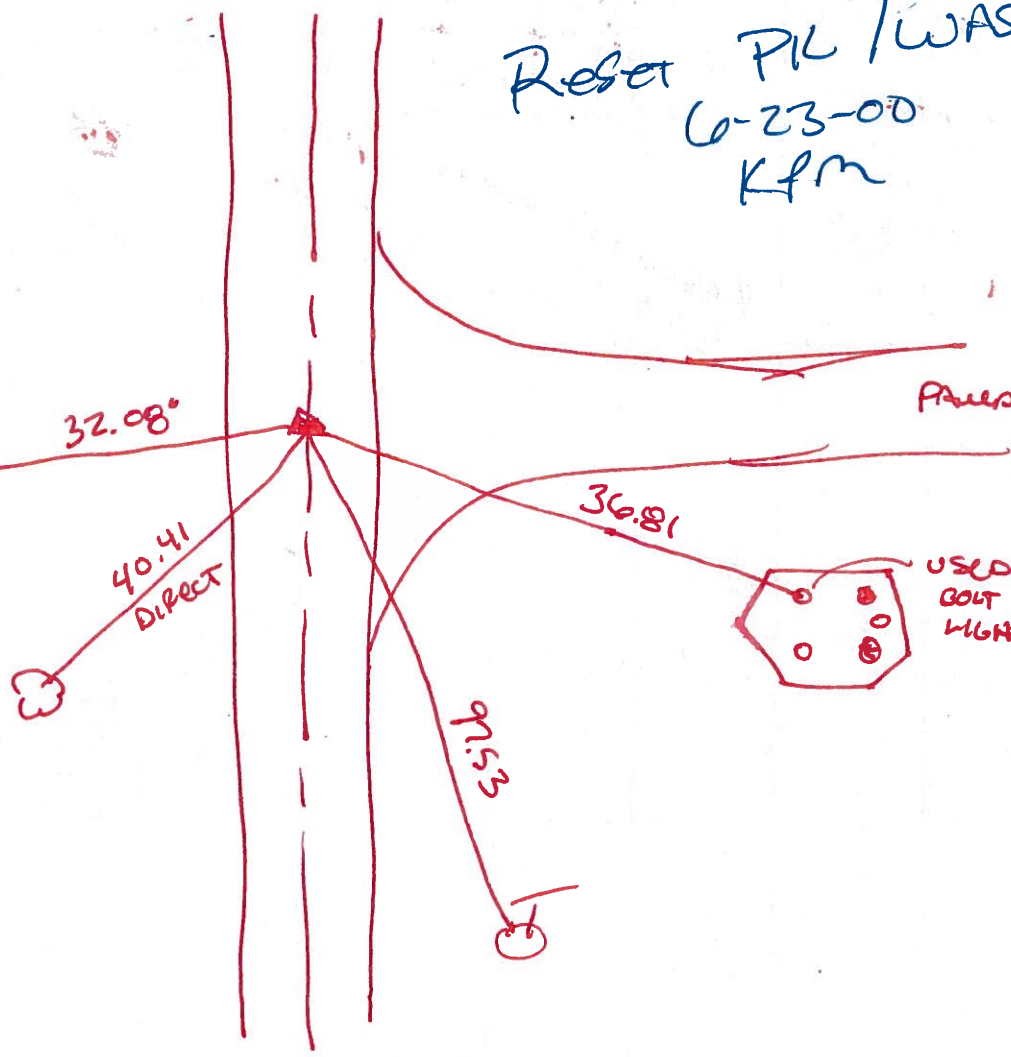
40.41
Direct

36.81

Power Drain

USED CTR
GOLT FOR
LIGHT

9153



O.D.O.T. DISTRICT 2 SURVEY OFFICE

PERSONNEL

NOTES K. Moser

H.C. M. CANTERBURY

R.C. M. BARWISSEL

REFERENCE NO. B2-A
(#82-D.N.F.)

DATE 4-19-00

WEATHER CLOUDY

TEMP. +60°F

SHEET 51 OF 96

ROUTE S.R. 105

COUNTY OTTAWA

TOWNSHIP HARRIS

SECTION 10

T6 N R 14 E

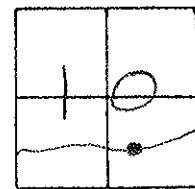
TYPE MONUMENT PK / WASHER

ON SURFACE - ~~BELOW~~ SURFACE

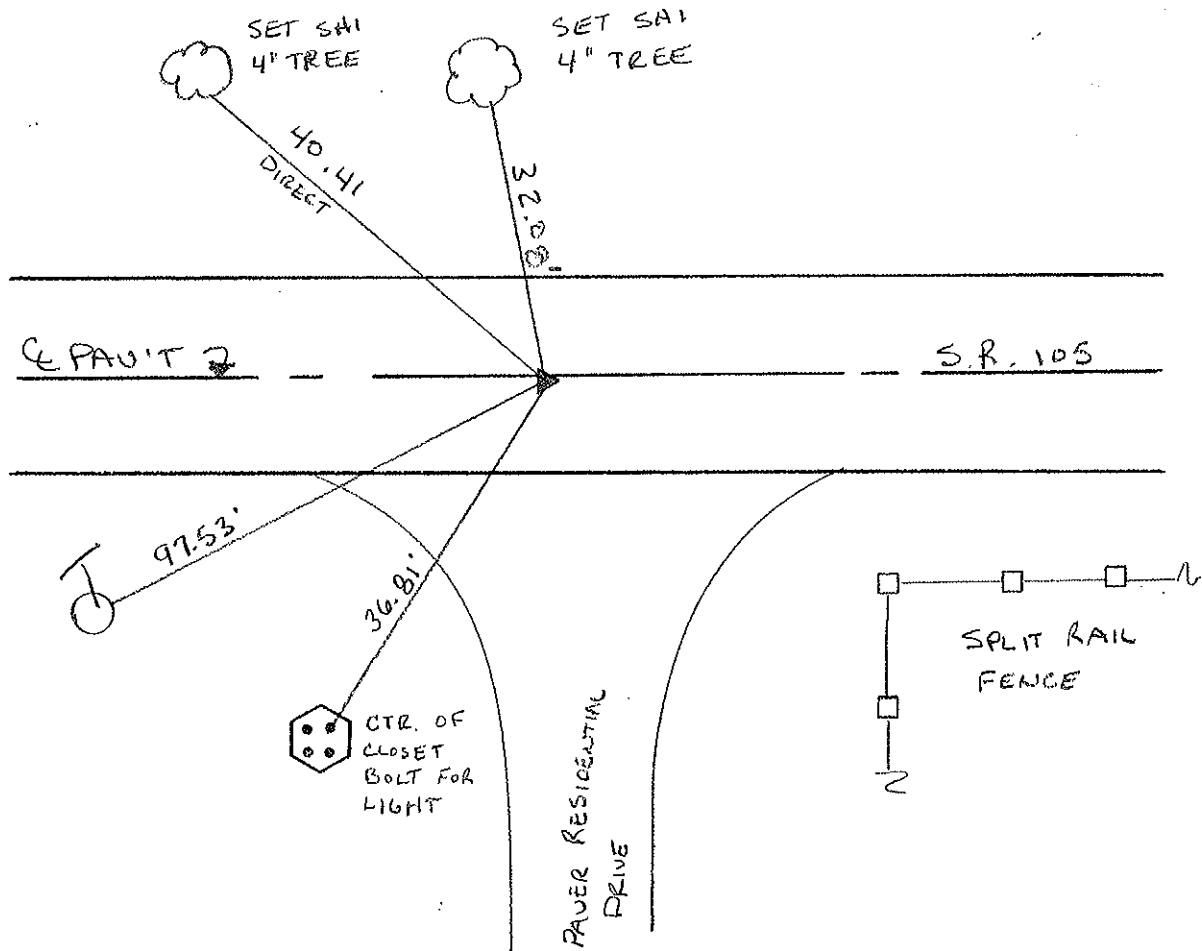
~~LEFT - C PAV'T.~~ - RIGHT 0.6' RT.

9.4' TO RT. EDGE PAVEMENT

S.L.M. 335 + 76



RESET PK / WASHER
6-23-00
KPM



O.D.O.T. DISTRICT 2 SURVEY OFFICE

PERSONNEL

REFERENCE NO. 82-A

SHEET OF

NOTES Cronin

DRAWN 6/01/88

H.C. Ripple

DATE 8/06/87

ROUTE #105

R.C. Barbour

WEATHER sunny

COUNTY Ottawa

Geyman

TEMP. 70°

TOWNSHIP Harris

SECTION 10

T 6 N R 14 E

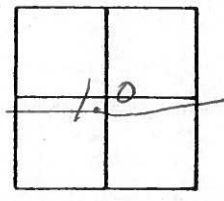
TYPE MONUMENT P.K. & washer

ON SURFACE - BELOW

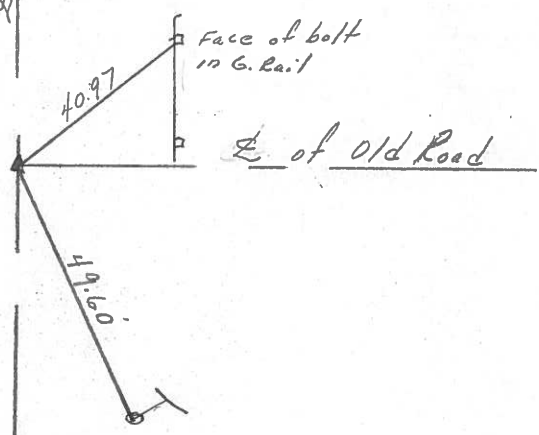
LEFT - € PAV'T. - RIGHT

 TO EDGE PAVEMENT

S.L.M. 335+11.5



S.L.M. #105



P.K. at top P.K. below
P.K. & washer

PERSONNEL TITLE PERSONNEL TITLE

COUNTY Ottawa DATE 4-17-74

S. R. 105 WEATHER Fair

SEC. 10 TEMP. 60°

DESCRIPTION Harris Twp. LEFT CENTER LINE RIGHT JOB NO.

