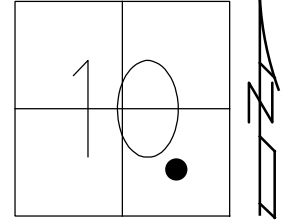


O.D.O.T. DISTRICT 2 SURVEY OFFICE (USE ONLY)

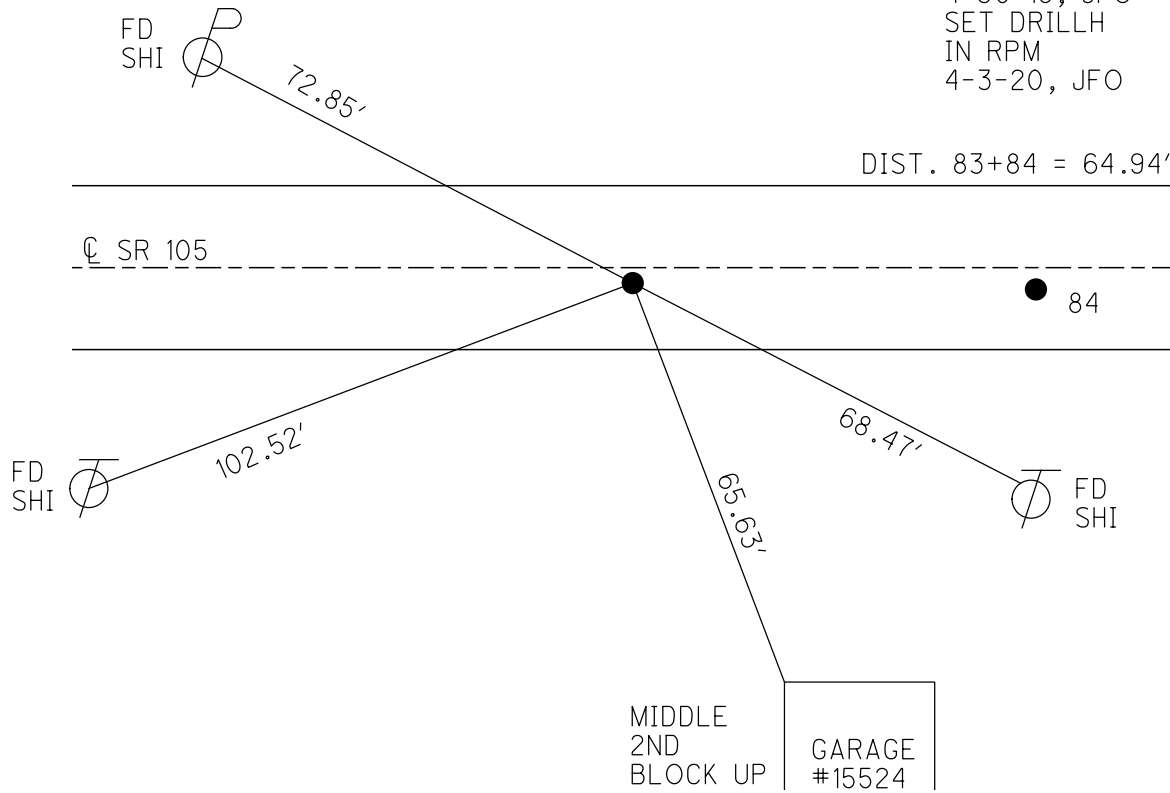
PERSONNEL \_\_\_\_\_ REFERENCE NO. 83 SHEET 64 OF 70  
 NOTES RHOADES DATE 7-31-19 ROUTE SR 105  
 H.C. O'DONNELL WEATHER CLOUDY COUNTY OTTAWA  
 R.C. MILLER TEMP. 72° F TOWNSHIP HARRIS  
 SECTION 10  
 DWG BY AUBLE PID 92131 T 6 N R 14 E

TYPE MONUMENT P.K.NAIL  
 ON SURFACE - ~~BELOW~~ ON \_\_\_\_\_  
 OFFSET  $\phi$  PAVEMENT 1.0' ~~LT~~ : RT  
10.7' TO LT EDGE PAVEMENT  
 STATION: 338+75.76



HORIZ.DATUM: NAD83 2011 GEOID: 2012A  
 GRID: NORTHING: 666043.645 EASTING: 1768037.318

RECORD:  
 FD P.K./WASHER  
 4/19/00, KPM  
 SET P.K./WASHER  
 6-23-00, KPM  
 FD P.K.NAIL  
 REF83  
 4-30-18, JFO  
 SET DRILLH  
 IN RPM  
 4-3-20, JFO



# O.D.O.T. DISTRICT 2 SURVEY OFFICE

PERSONNEL

REFERENCE NO. 83,84

SHEET 52 OF 96

NOTES K. MOSER

H.C. M. CANTERBURY

DATE 4-19-00

ROUTE S.R. 105

R.C. M. BARNHISEL

WEATHER CLOUDY

COUNTY OTTAWA

TEMP. +60°F

TOWNSHIP HARRIS

SECTION 10

T6 N R 14 E

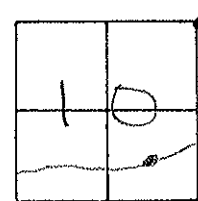
TYPE MONUMENT A = PK/WASHER B = LG. R.R. SPIKE

ON SURFACE - BELOW SURFACE

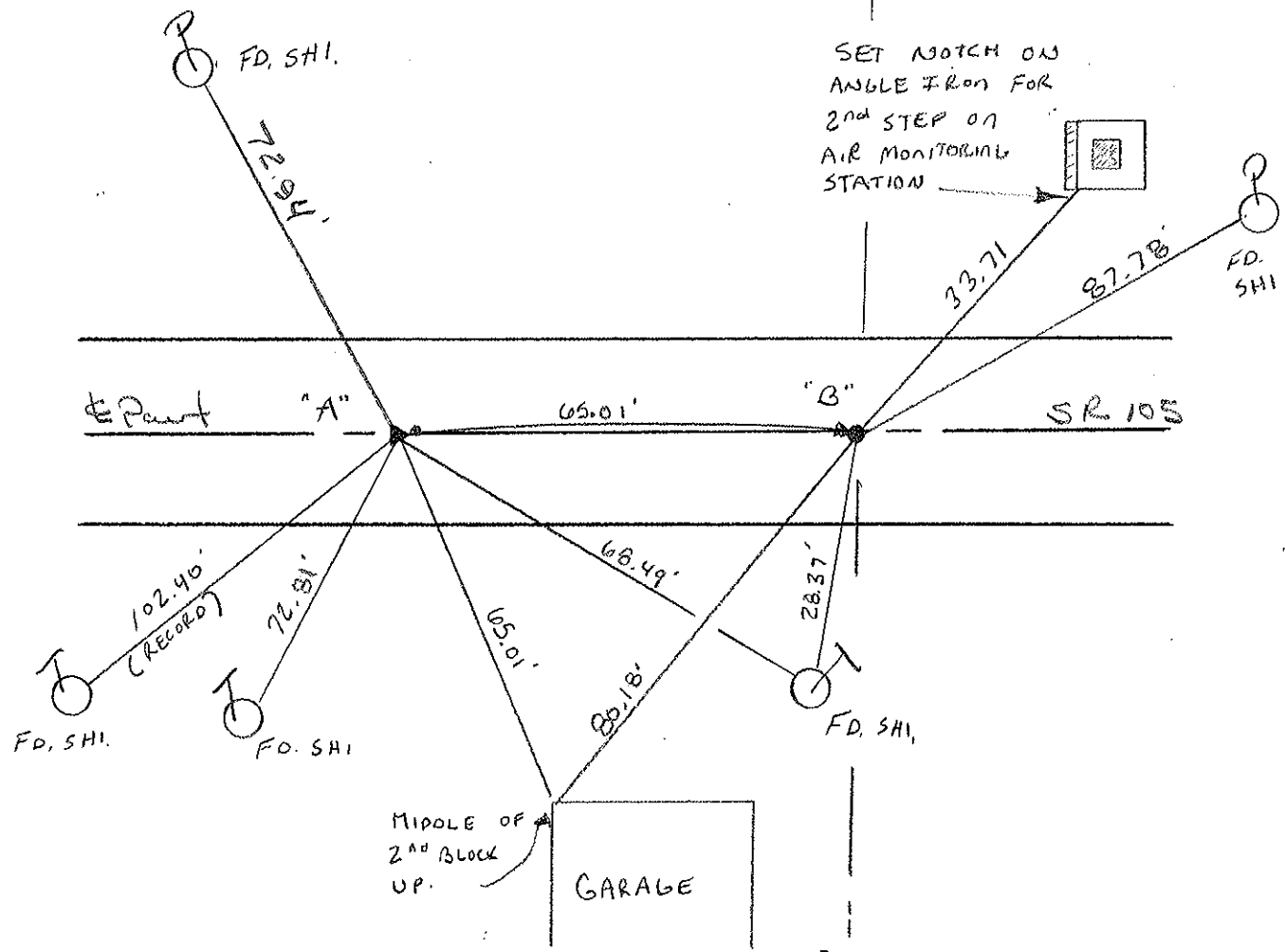
LEFT-℄ PAV'T. - RIGHT A = 0.1' LT. B = 0.8 RT.

A = 10.7' TO LT. B = 9.4' TO RT. EDGE PAVEMENT

S.L.M. \_\_\_\_\_



RESET PK/WASHER  
6-23-00  
KPM



# O.D.O.T. DISTRICT 2 SURVEY OFFICE

PERSONNEL

REFERENCE NO. 83

SHEET      OF     

NOTES Cronin

DRAWN 6/01/88

H.C. Ripple

DATE 8/06/87

ROUTE #105

R.C. Barbour

WEATHER sunny

COUNTY Ottawa

Geyman

TEMP. 70°

TOWNSHIP Harris

SECTION 10

T 6 N R 14 E

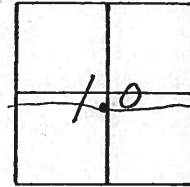
TYPE MONUMENT P.K. & washer

ON SURFACE - BELOW     

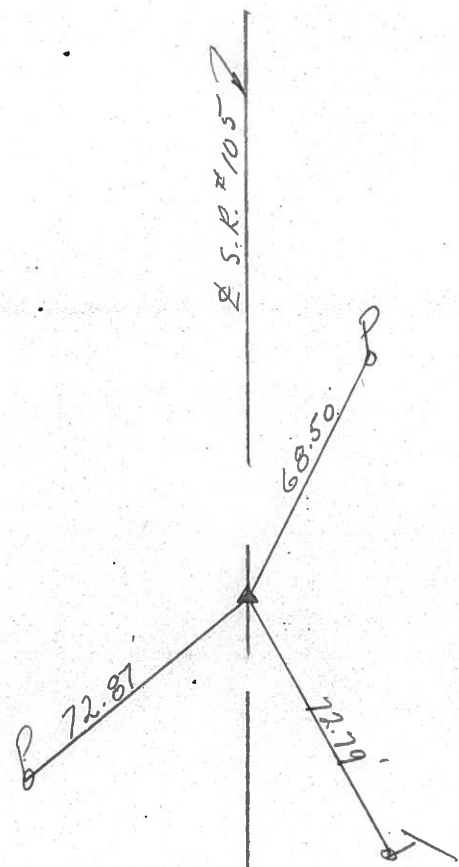
LEFT -      PAV'T. - RIGHT     

TO      EDGE PAVEMENT

S.L.M. 339+00.4



P.K. a top bolt  
below P.K. & washer



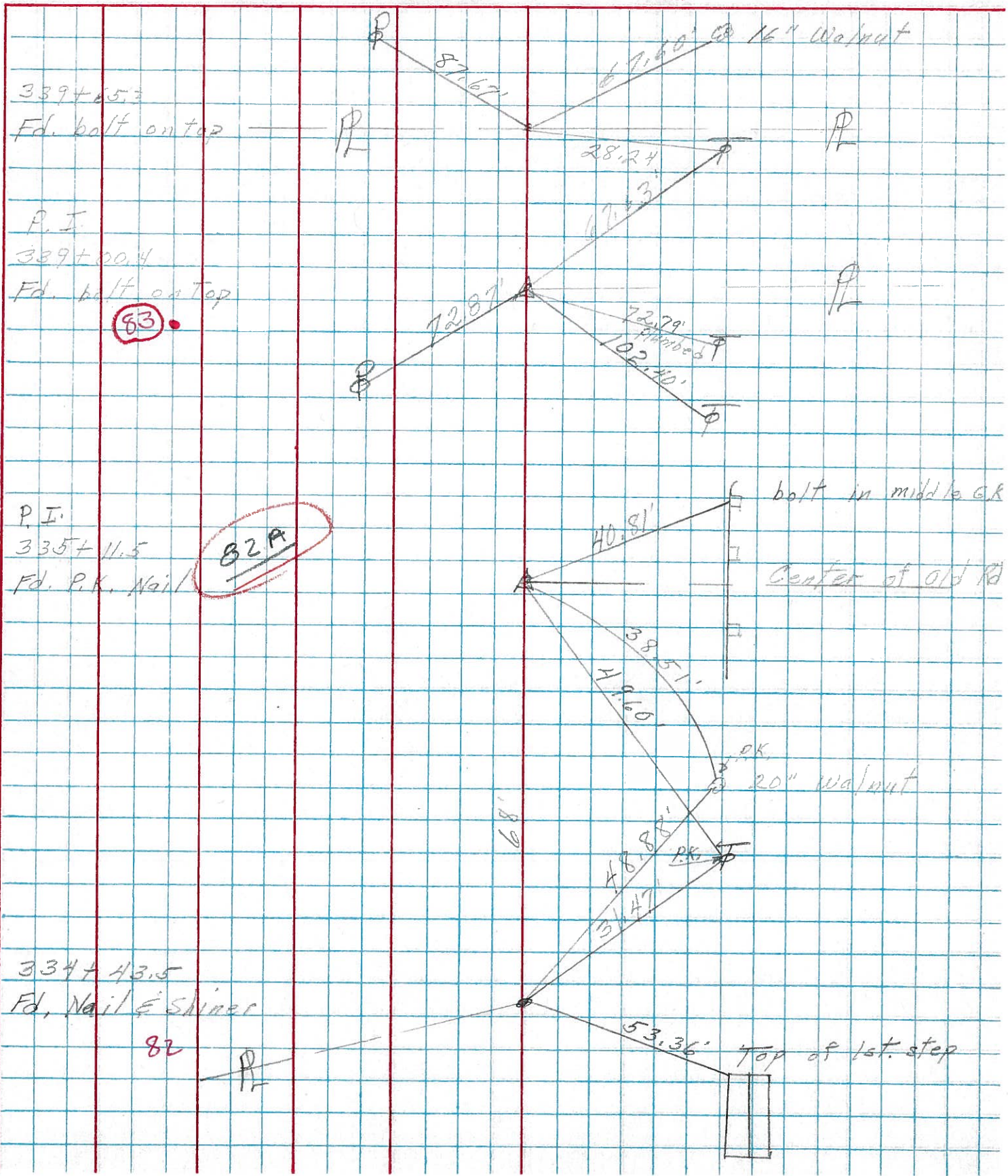
PERSONNEL TITLE PERSONNEL TITLE

COUNTY Ottawa DATE 4-17-74

S. R. 105 WEATHER Fair

SEC. 10 TEMP. 60°

DESCRIPTION Harris Twp. JOB NO. \_\_\_\_\_



PERSONNEL	TITLE	PERSONNEL	TITLE	COUNTY	DATE
Schneider				Ottawa	7-8-68
Mosser				S. R.	105
Barbour				WEATHER	Fair-Hot
Potts				SEC. San. Co. Line to Oak Harbor	TEMP. 90°
DESCRIPTION	Ties for Control Points			JOB NO.	

