

O.D.O.T. DISTRICT 2 SURVEY OFFICE (USE ONLY)

PERSONNEL

REFERENCE NO. 86

SHEET 66 OF 70

NOTES MOSER DATE 4-19-00

ROUTE SR 105

H.C. CANTERBURY WEATHER CLOUDY

COUNTY OTTAWA

R.C. BARNHEISEL TEMP. 60° F

TOWNSHIP HARRIS

SECTION 10

DWG BY AUBLE PID _____

T 6 N R 14 E

TYPE MONUMENT 1/2" IPIN

~~ON SURFACE~~ - BELOW 4"

OFFSET CL PAVEMENT 12.6' ~~RT~~ : RT

2.7' TO RT EDGE PAVEMENT

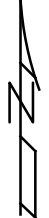
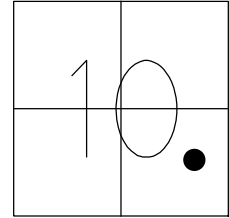
STATION: 355+30.88

HORZ. DATUM: NAD83 2011

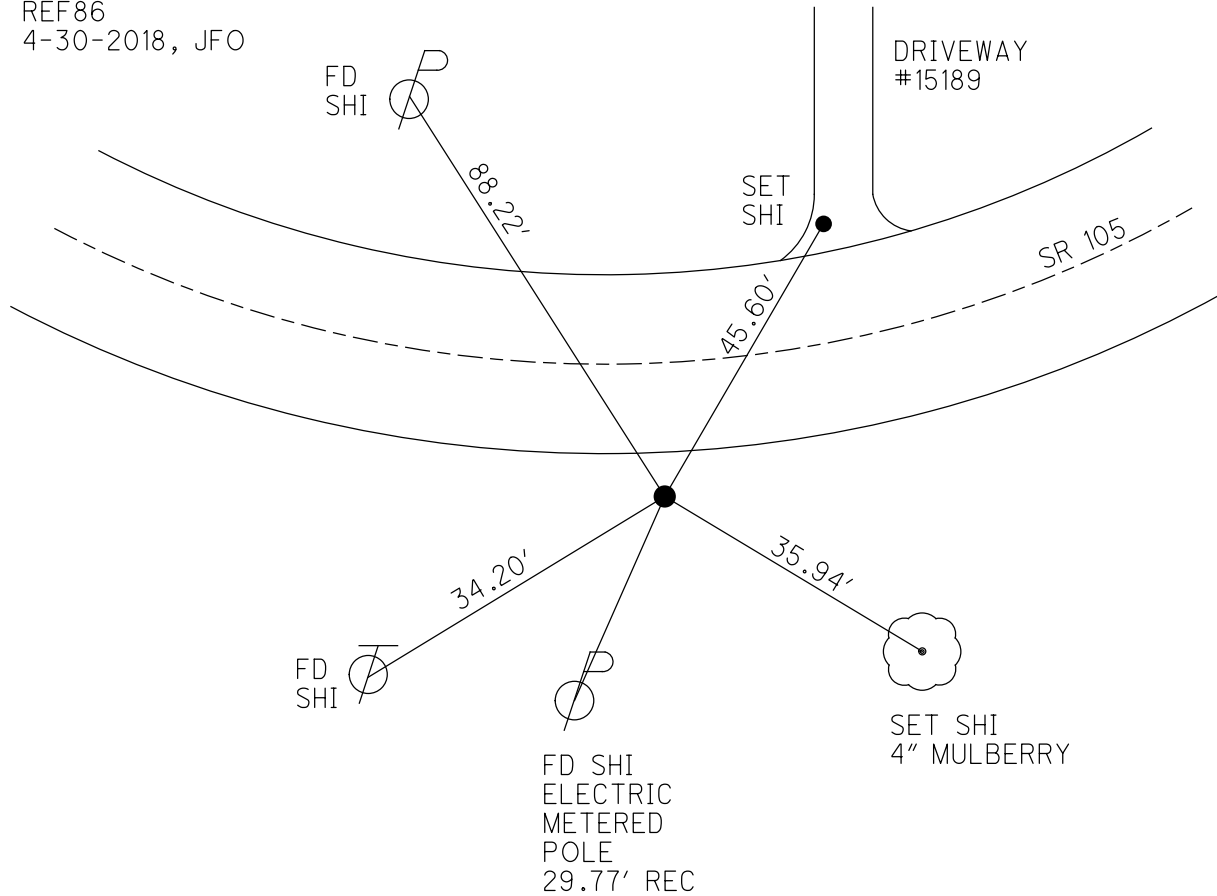
GEOID: 2012A

GRID: NORTHING: 666160.270

EASTING: 1769686.100



RECORD:
 FD 1/2" IPIN
 4" DOWN
 4/19/00, MB
 FD 1/2" IPIN
 9" DOWN
 REF86
 4-30-2018, JFO



O.D.O.T. DISTRICT 2 SURVEY OFFICE

PERSONNEL

REFERENCE NO. 86

SHEET 53 OF 96

NOTES K. Moser

H.C. M. CANTERBURY

DATE 4-19-00

ROUTE S.R. 105

R.C. M. BARNHISEL

WEATHER CLOUDY

COUNTY OTTAWA

TEMP. 40°F

TOWNSHIP HARRIS

SECTION 10

T6 N R 14 E

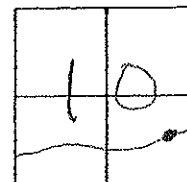
TYPE MONUMENT 1/2" I. ROD

~~ON SURFACE~~ - BELOW 4" BELOW

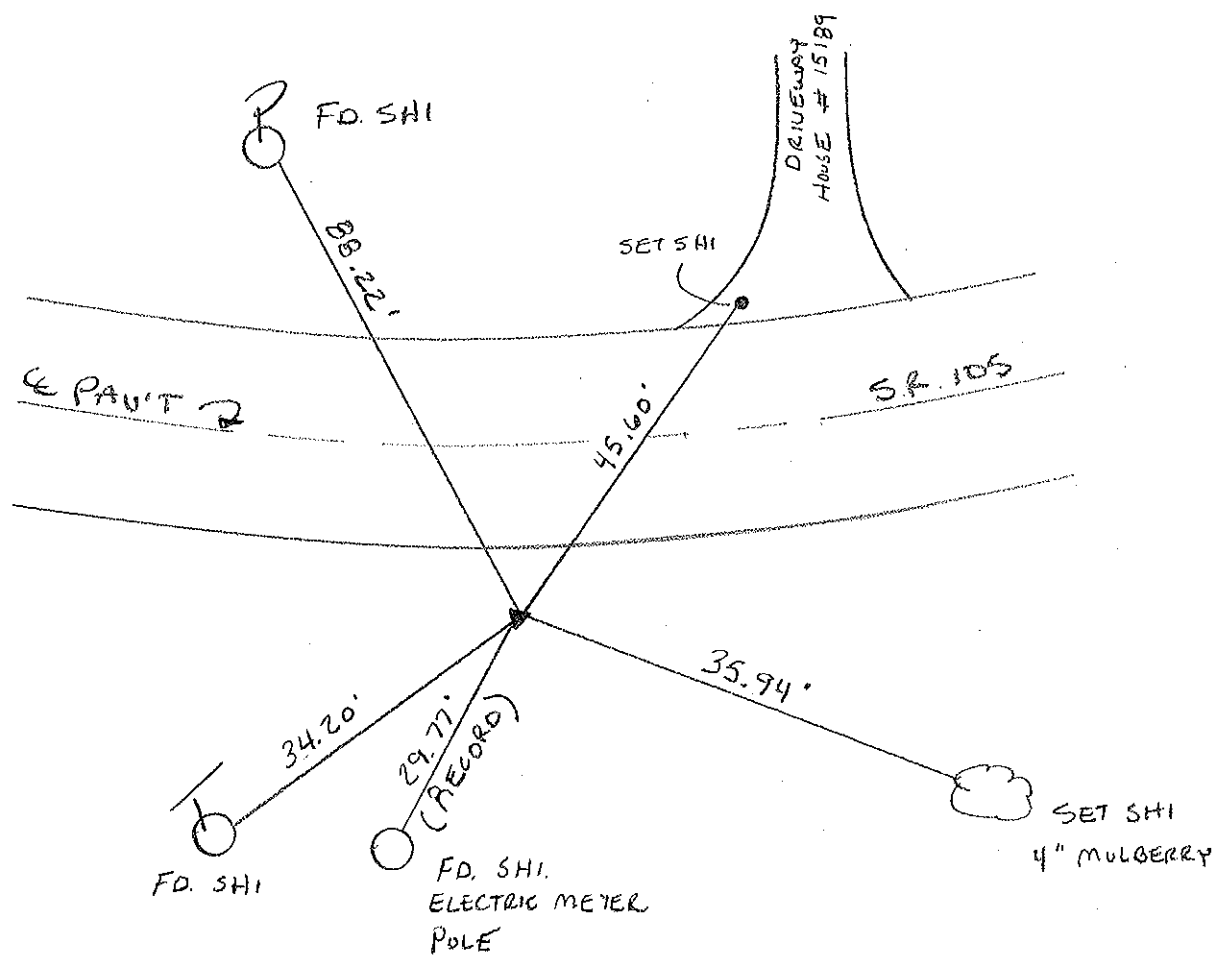
LEFT - E PAV'T. - RIGHT 12.6

2.7' RT TO RT. EDGE PAVEMENT

S.L.M. 356 + 27



PAINTED ARROW
ON BEAM
EDGE
KPM



O.D.O.T. DISTRICT 2 SURVEY OFFICE

PERSONNEL

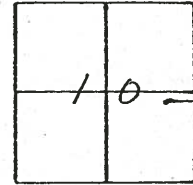
NOTES Cronin
 H.C. Ripple
 R.C. Barbour
Geyman

REFERENCE NO. 86
 DRAWN 6/02/88
 DATE 8/06/87
 WEATHER sunny
 TEMP. 73°

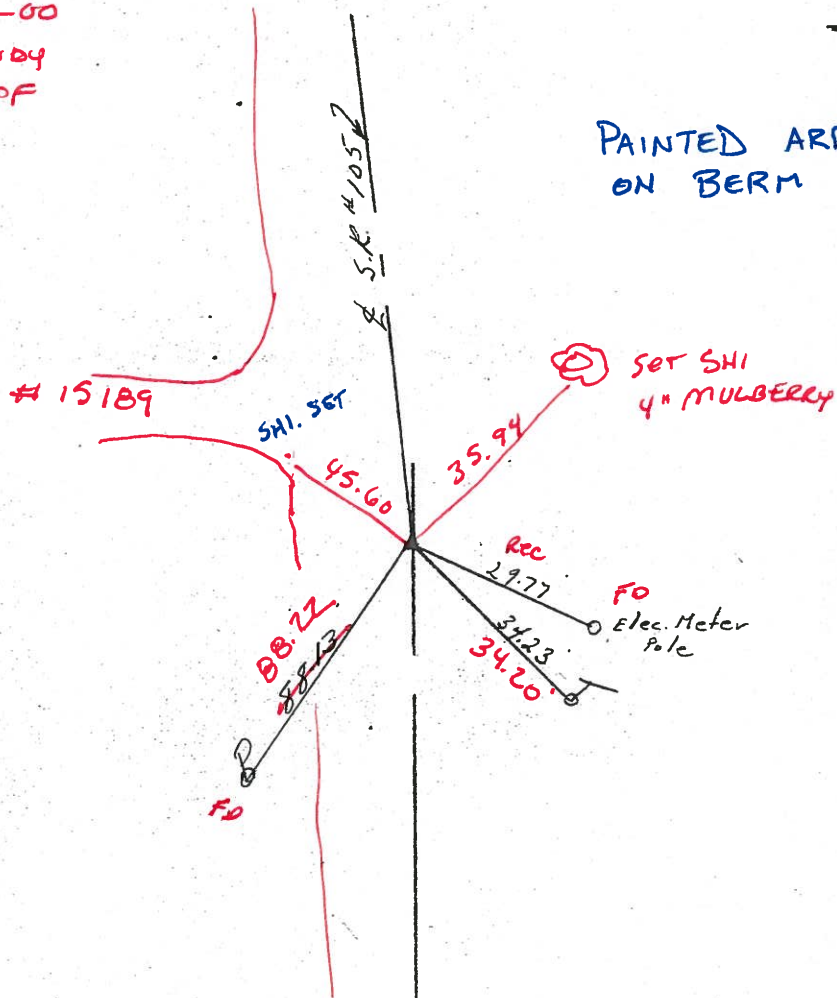
SHEET ___ OF ___

ROUTE #105
 COUNTY Ottawa
 TOWNSHIP Harris
 SECTION 10
T 6 N R 14 E

TYPE MONUMENT 1/2" I. Rod ✓
 ON SURFACE - BELOW 4" ✓
 LEFT - ~~C~~ PAV'T. - RIGHT E = 12.6
2.7 TO ~~Rt~~ OR ~~Lt~~ EDGE PAVEMENT
 S.L.M. 355 + 54.50 356 + 27



4-21-00
 Cloudy
 +55°F



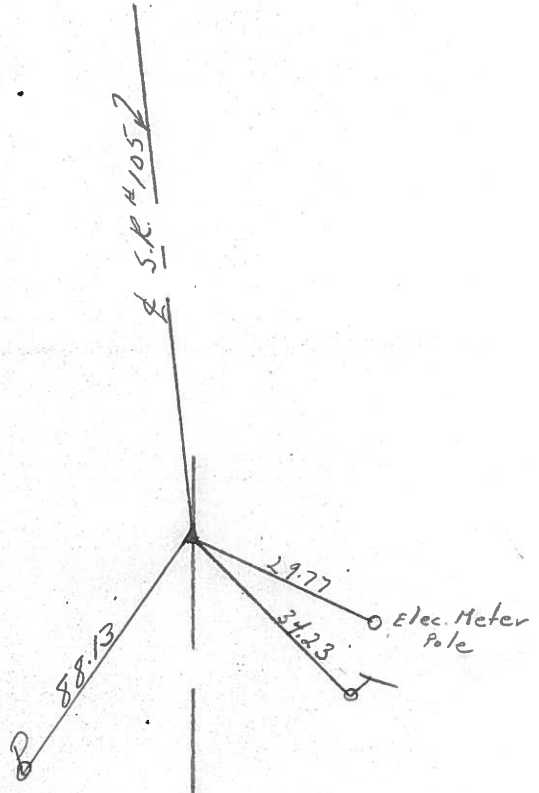
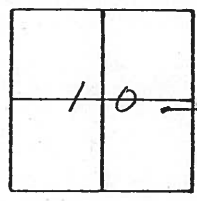
PAINTED ARROW
 ON BERM EDGE



O.D.O.T. DISTRICT 2 SURVEY OFFICE

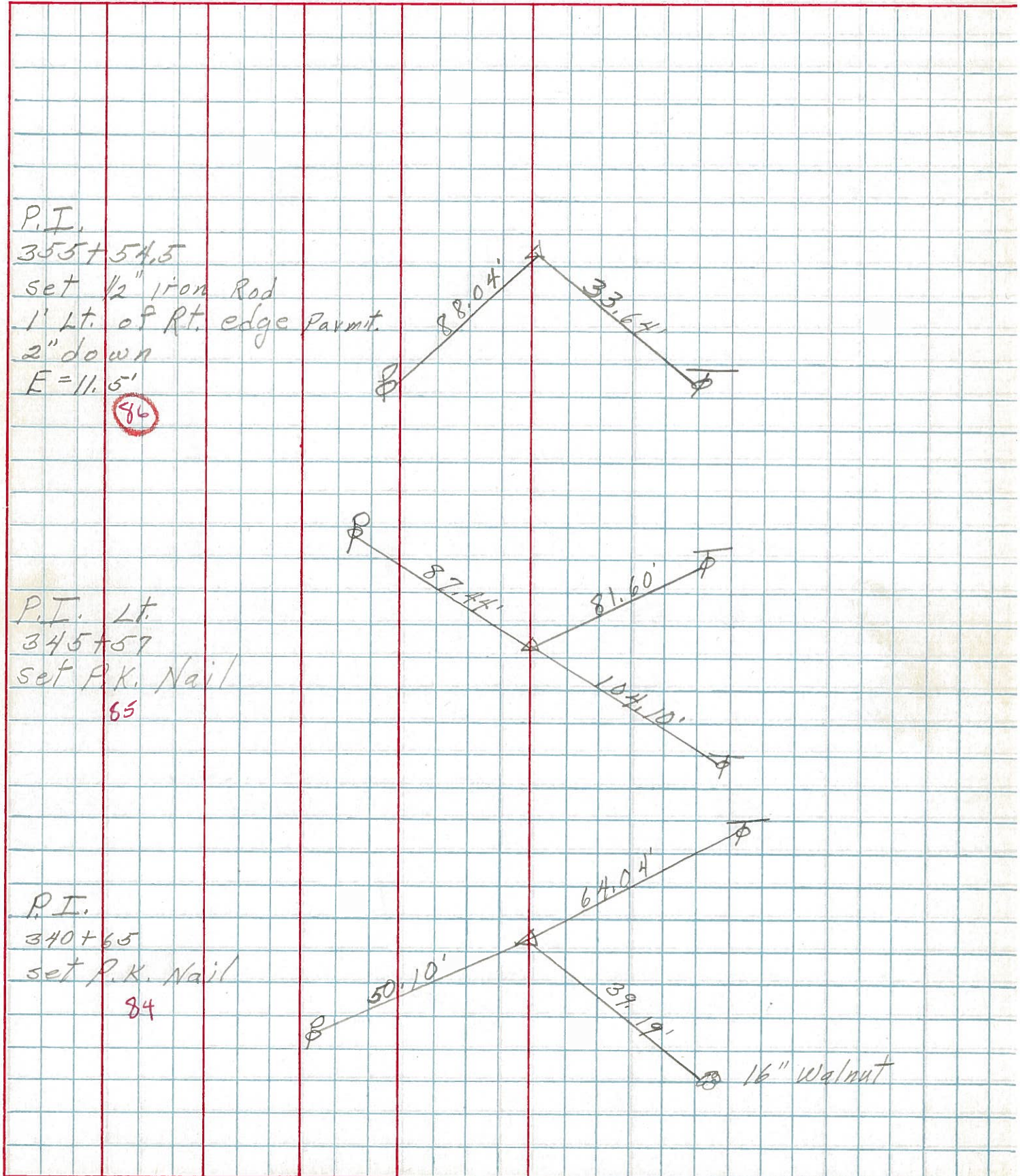
PERSONNEL _____ REFERENCE NO. 86 SHEET _____ OF _____
 NOTES Cronin DRAWN 6/02/88
 H.C. Ripple DATE 8/06/87 ROUTE #105
 R.C. Barbour WEATHER sunny COUNTY Ottawa
Geyman TEMP. 73° TOWNSHIP Harris
 SECTION 10
 T 6 N R 14 E

TYPE MONUMENT 1/2" I. Rod
 ON SURFACE - BELOW 4"
 LEFT- & PAV'T. - RIGHT E=11.5
 TO _____ EDGE PAVEMENT
 S.L.M. 355+54.50



PERSONNEL	TITLE	PERSONNEL	TITLE	COUNTY	DATE	WEATHER	TEMP.
schneider		Ash		Ottawa	5-1-74	Fair-wind	60°
Mosser		eroinin		S. R. 105			
Barbour		Ripple		SEC. 10			
		Geyman					

DESCRIPTION Harris Twp. JOB NO. _____



P.I.
355+54.5
set 1/2" iron Rod
1' Lt. of Rt. edge Parmt.
2" down
E=11.5'
86

P.I. Lt.
345+57
set P.K. Nail
85

P.I.
340+65
set P.K. Nail
84

16" Walnut