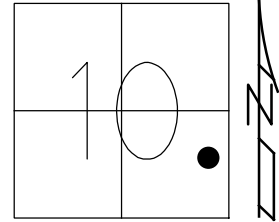


O.D.O.T. DISTRICT 2 SURVEY OFFICE (USE ONLY)

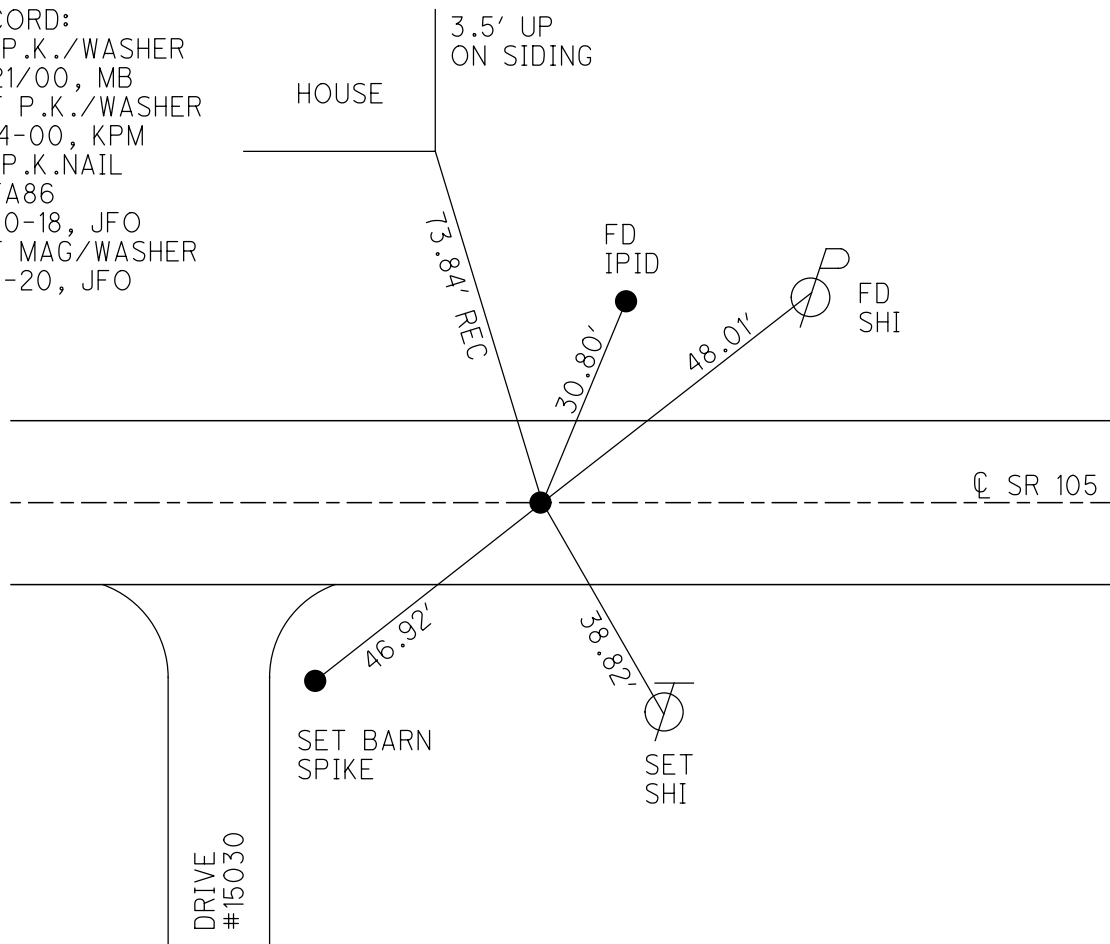
PERSONNEL \_\_\_\_\_ REFERENCE NO. 86 A SHEET 67 OF 70  
 NOTES RHOADES DATE 7-31-2019 ROUTE SR 105  
 H.C. LEU WEATHER CLOUDY COUNTY OTTAWA  
 R.C. MILLER TEMP. 72° F TOWNSHIP HARRIS  
 DWG BY AUBLE PID 92131 SECTION 10  
 T 6 N R 14 E

TYPE MONUMENT P.K.NAIL  
 ON SURFACE - ~~BELOW~~ ON  
 OFFSET  $\text{\textcircled{C}}$  PAVEMENT 0.3' LT : ~~RT~~  
10.4' TO LT EDGE PAVEMENT  
 STATION: 363+79.46



HORIZ.DATUM: NAD83 2011 GEOID: 2012A  
 GRID: NORTHING: 666327.784 EASTING: 1770518.526

RECORD:  
 FD P.K./WASHER  
 4/21/00, MB  
 SET P.K./WASHER  
 6-14-00, KPM  
 FD P.K.NAIL  
 REFA86  
 4-30-18, JFO  
 SET MAG/WASHER  
 4-3-20, JFO



# O.D.O.T. DISTRICT 2 SURVEY OFFICE

PERSONNEL

REFERENCE NO. 86-A

SHEET 57 OF 96

NOTES K. Moser

H.C. M. CANTERBURY

DATE 4-21-00

ROUTE S.R. 105

R.C. M. BARNHISEL

WEATHER CLOUDY

COUNTY OTTAWA

TEMP. +55°F

TOWNSHIP HARRIS

SECTION 11

T 6 N R 14 E

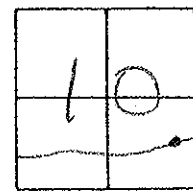
TYPE MONUMENT PK / WASHER

ON SURFACE - BELOW SURFACE

LEFT- PAV'T - RIGHT 0.3' LT.

10.4 TO LT. EDGE PAVEMENT

S.L.M. 364 + 78



RESET PK/WASHER  
6-14-00  
KPM

