

O.D.O.T. DISTRICT 2 SURVEY OFFICE (USE ONLY)

PERSONNEL

REFERENCE NO. 88 A

SHEET 69 OF 70

NOTES RHOADES DATE 7-31-2019  
 H.C. O'DONNELL WEATHER CLOUDY  
 R.C. MILLER TEMP. 76° F

ROUTE SR 105  
 COUNTY OTTAWA  
 TOWNSHIP HARRIS  
 SECTION 10  
 T 6 N R 14 E

DWG BY AUBLE PID 92131

TYPE MONUMENT P.K./WASHER

ON SURFACE - ~~BELOW~~ ON

OFFSET Q PAVEMENT ON LT : RT

- TO - EDGE PAVEMENT

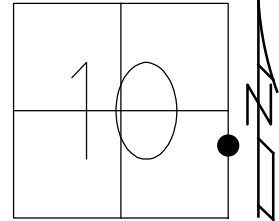
STATION: 365+91.56

HORZ.DATUM: NAD83 2011

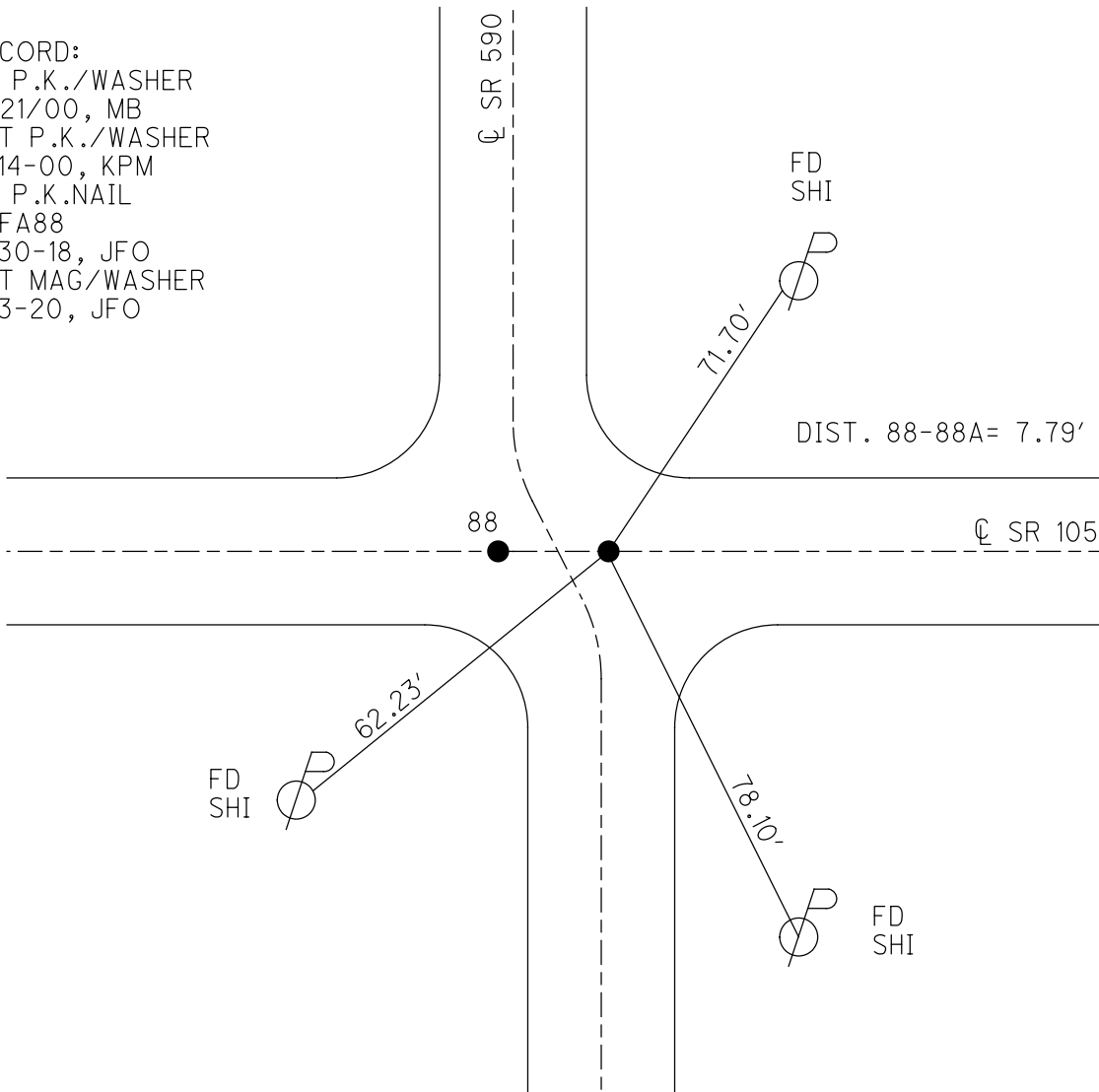
GEOID: 2012A

GRID: NORTHING: 666372.317

EASTING: 1770725.891



RECORD:  
 FD P.K./WASHER  
 4/21/00, MB  
 SET P.K./WASHER  
 6-14-00, KPM  
 FD P.K.NAIL  
 REFA88  
 4-30-18, JFO  
 SET MAG/WASHER  
 4-3-20, JFO



# O.D.O.T. DISTRICT 2 SURVEY OFFICE

PERSONNEL

REFERENCE NO. 88-A

SHEET 55 OF 96

NOTES K. MOSER

#13 - SR590

H.C. M. CANTERBURY

DATE 4-21-00

ROUTE S.R. 105

R.C. M. BARNISEL

WEATHER CLOUDY

COUNTY OTTAWA

TEMP. +60°F

TOWNSHIP HARRIS

SECTION 11

T6 N R 14 E

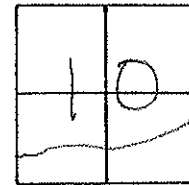
TYPE MONUMENT PK / WASHERS

ON SURFACE - ~~BELOW~~ SURFACE

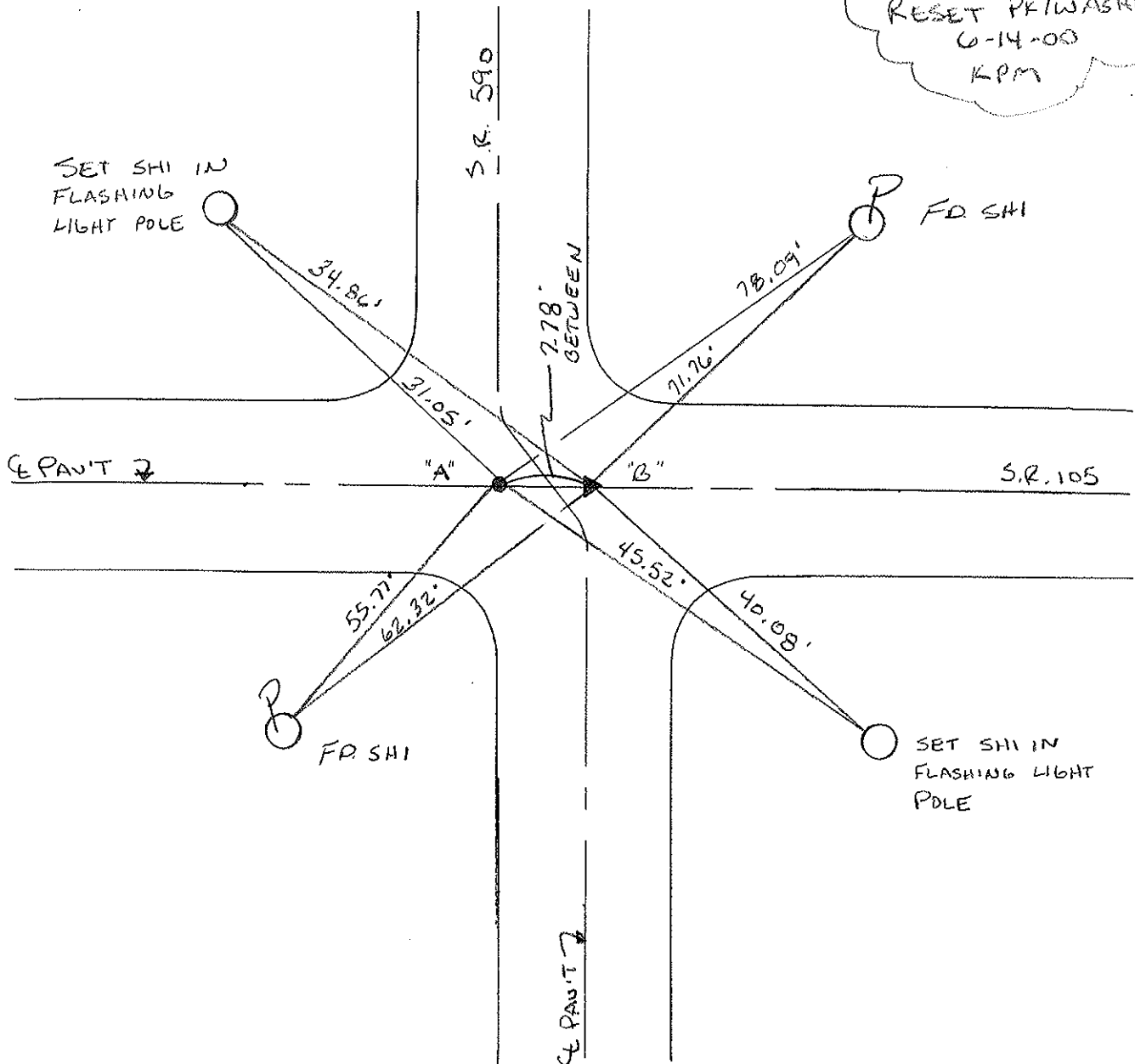
~~LEFT~~ - CE PAV'T. - RIGHT A & B CE PAV'T

- TO - EDGE PAVEMENT

S.L.M. A = 366 + 83    B = 366 + 91



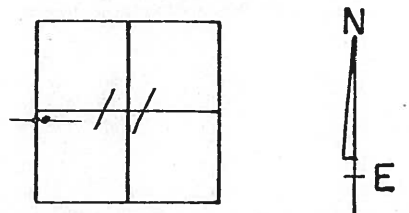
RESET PK/WASHERS  
6-14-03  
KPM



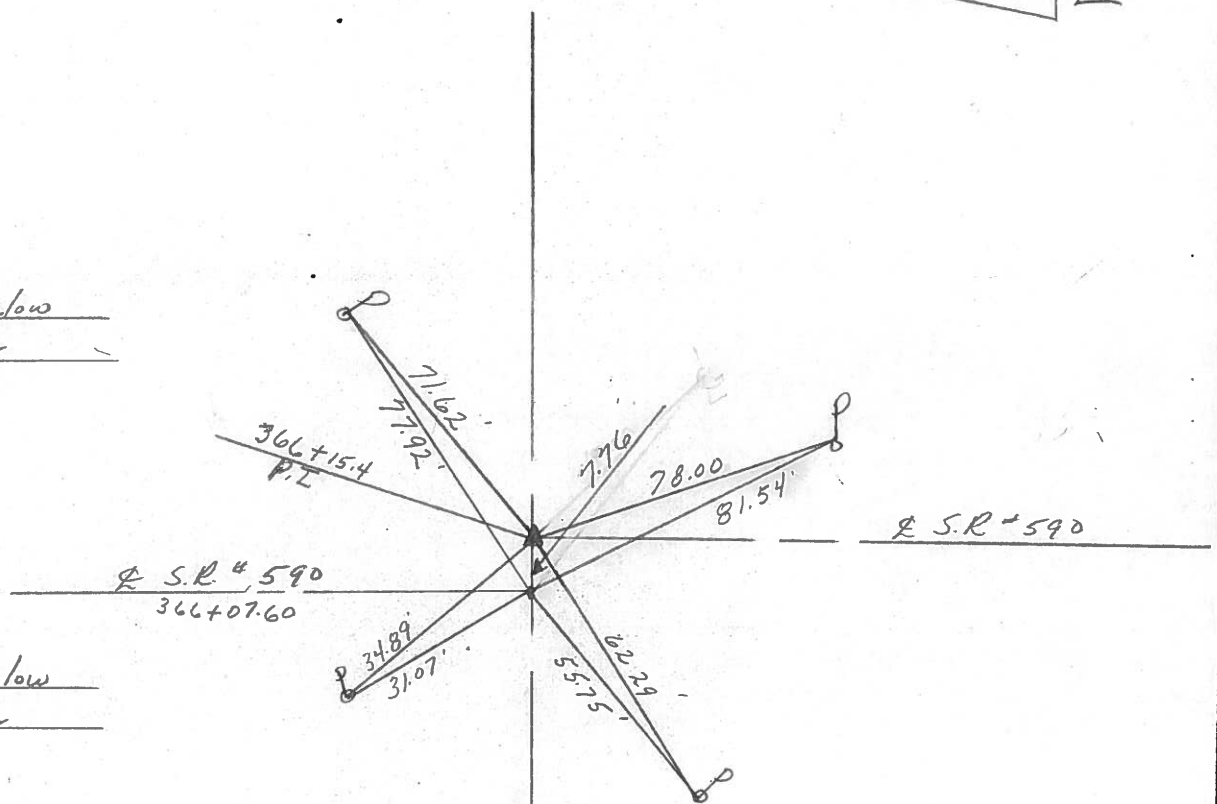
# O.D.O.T. DISTRICT 2 SURVEY OFFICE

PERSONNEL \_\_\_\_\_ REFERENCE NO. 88A SHEET \_\_\_\_\_ OF \_\_\_\_\_  
 NOTES Cronin DRAWN 6/02/88  
 H.C. Ripple DATE 8/06/87 ROUTE #105  
 R.C. Barbour WEATHER sunny COUNTY Ottawa  
Geyman TEMP. 73° TOWNSHIP Harris  
 SECTION 11  
 T 6 N R 14 E

TYPE MONUMENT P.K. & washer  
 ON SURFACE - BELOW \_\_\_\_\_  
 LEFT - PAV'T. - RIGHT \_\_\_\_\_  
 TO \_\_\_\_\_ EDGE PAVEMENT  
 S.L.M. 366+15.4



P.I.  
Pony spike below  
P.K. & washer



R.R. spike below  
P.K. & washer