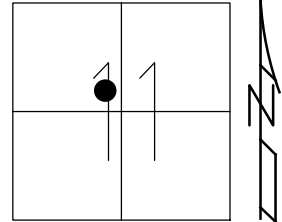


O.D.O.T. DISTRICT 2 SURVEY OFFICE (USE ONLY)

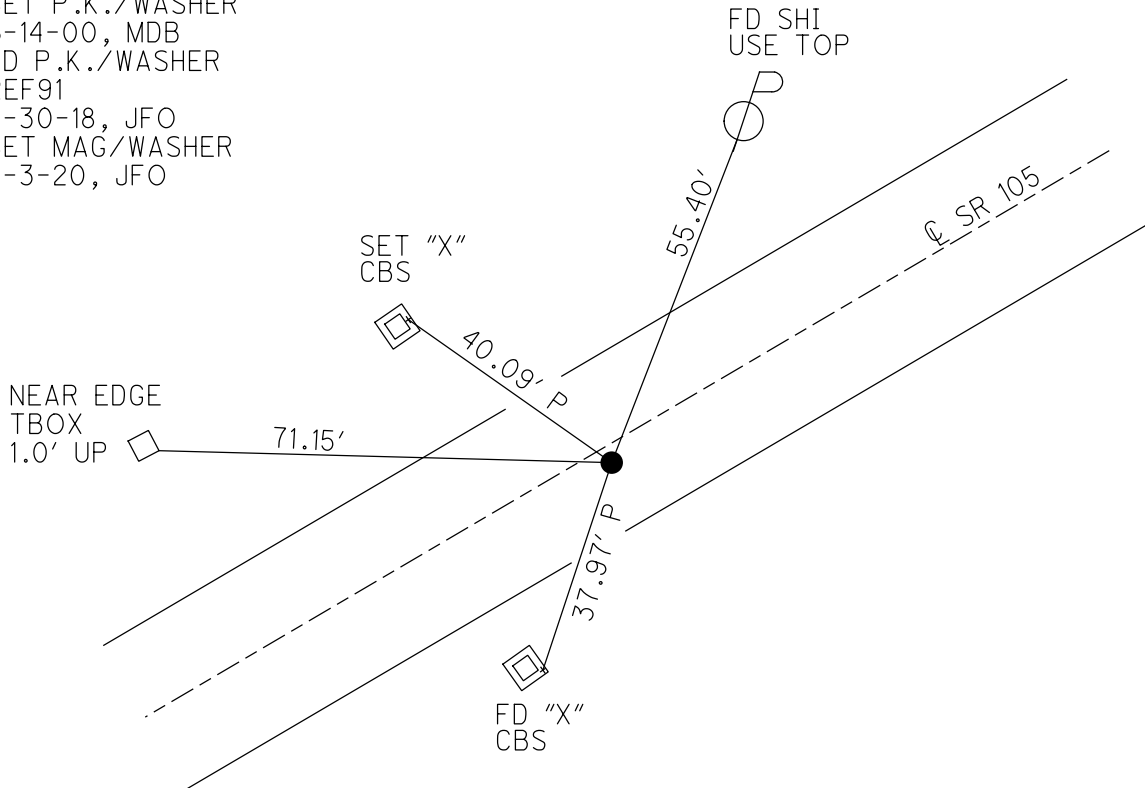
PERSONNEL _____ REFERENCE NO. 91 SHEET 2 OF 42
 NOTES RHOADES DATE 8-1-2019 ROUTE SR 105
 H.C. O'DONNELL WEATHER SUNNY COUNTY OTTAWA
 R.C. MILLER TEMP. 74°F TOWNSHIP HARRIS
 DWG BY AUBLE PID 92131 SECTION 11
 T 6 N R 14 E

TYPE MONUMENT P.K./WASHER
~~ON SURFACE~~ - BELOW 1 1/2"
 OFFSET \odot PAVEMENT 6.2' ~~RT~~ : RT
4.1' TO RT EDGE PAVEMENT
 STATION: 391+84.67



HORIZ.DATUM: NAD83 (2011) GEOID: 2012A
 GRID: NORTHING: 667003.457 EASTING: 1773240.751

RECORD:
 FD P.K./WASHER
 4/24/00, MB
 SET P.K./WASHER
 6-14-00, MDB
 FD P.K./WASHER
 REF91
 4-30-18, JFO
 SET MAG/WASHER
 4-3-20, JFO



O.D.O.T. DISTRICT 2 SURVEY OFFICE

PERSONNEL

NOTES M. BARNISEL

H.C. M. CANTERBURY

R.C. M. BARNISEL

REFERENCE NO. 91

SHEET 58 OF 96

DATE 4-24-00

WEATHER Sunny

TEMP. +60°F

Drawn By. K. MOSER

ROUTE S.R. 105

COUNTY OTTAWA

TOWNSHIP HARRIS

SECTION 11

T6 N R 14 E

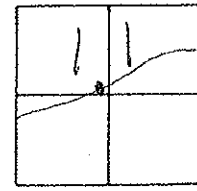
TYPE MONUMENT PK WASHER

ON SURFACE - BELOW 1 1/2"

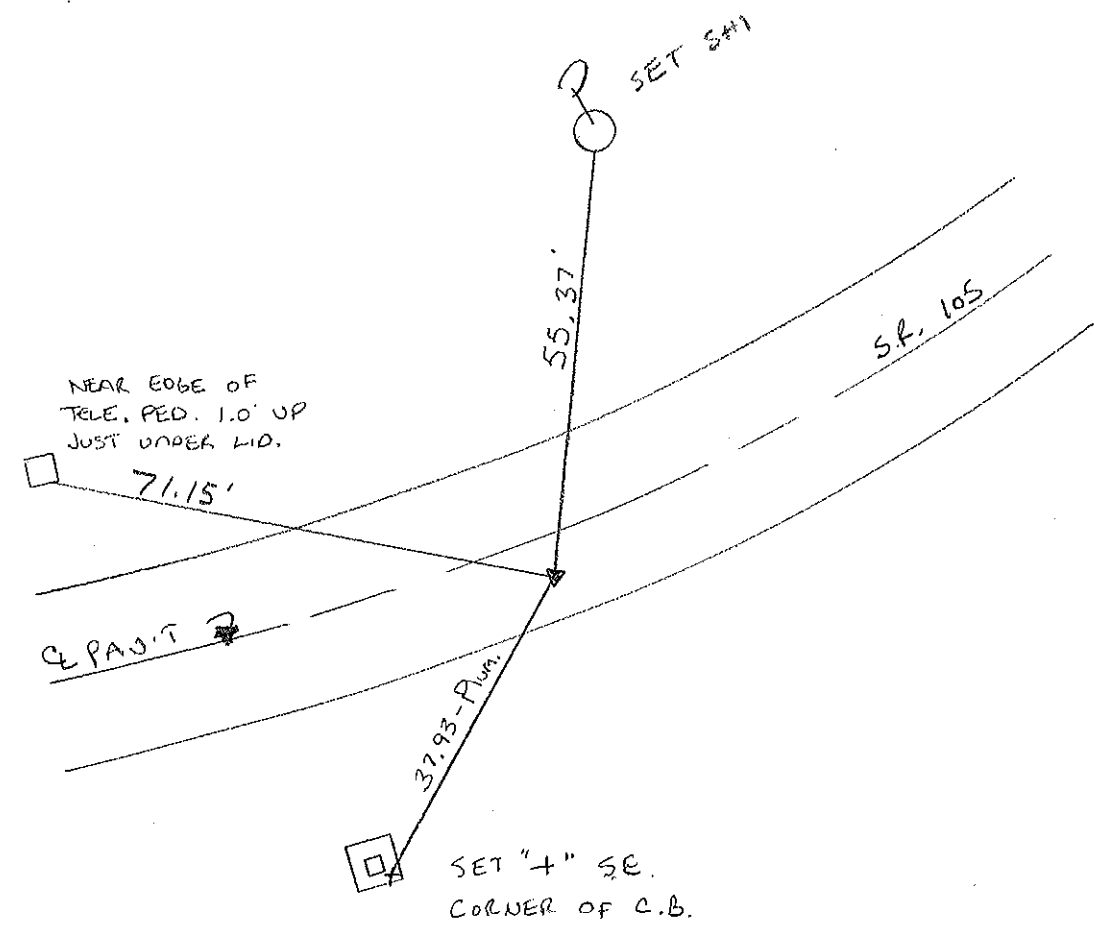
~~LEFT~~ PAV'T. - RIGHT 6.2' RT.

4.1 TO RT EDGE PAVEMENT

S.L.M. 392 + 89



RESET PK WASHER
 6-14-00
 M.P.B.



O.D.O.T. DISTRICT 2 SURVEY OFFICE

PERSONNEL

REFERENCE NO. 91

SHEET OF

NOTES Cronin

DRAWN 6/02/87

H.C. Ripple

DATE 8/20/87

ROUTE # 105

R.G. Barbour

WEATHER sunny

COUNTY Ottawa

Geyman

TEMP. 72°

TOWNSHIP Harris

SECTION 11

T 6 N R 14 E

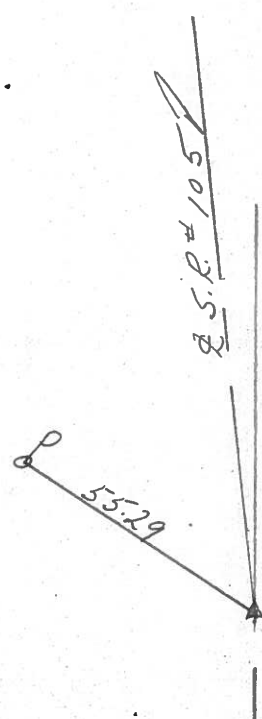
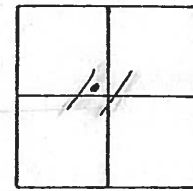
TYPE MONUMENT P.K. & washer

ON SURFACE - BELOW

LEFT - € PAV'T. - RIGHT 6'

 TO EDGE PAVEMENT

S.L.M. 392+06



P.K. atop P.K. below
P.K. & washer

PERSONNEL	TITLE	PERSONNEL	TITLE	COUNTY	DATE
Schneider				Ottawa	5-2-74
Mosser		Cronin		S. R. 105	WEATHER Fair
Barbour		Ripple		SEC. 11	TEMP. 55°
		Geyman			

DESCRIPTION Harris Top LEFT CENTER LINE RIGHT JOB NO.

