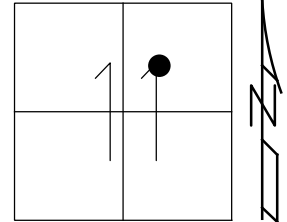


O.D.O.T. DISTRICT 2 SURVEY OFFICE (USE ONLY)

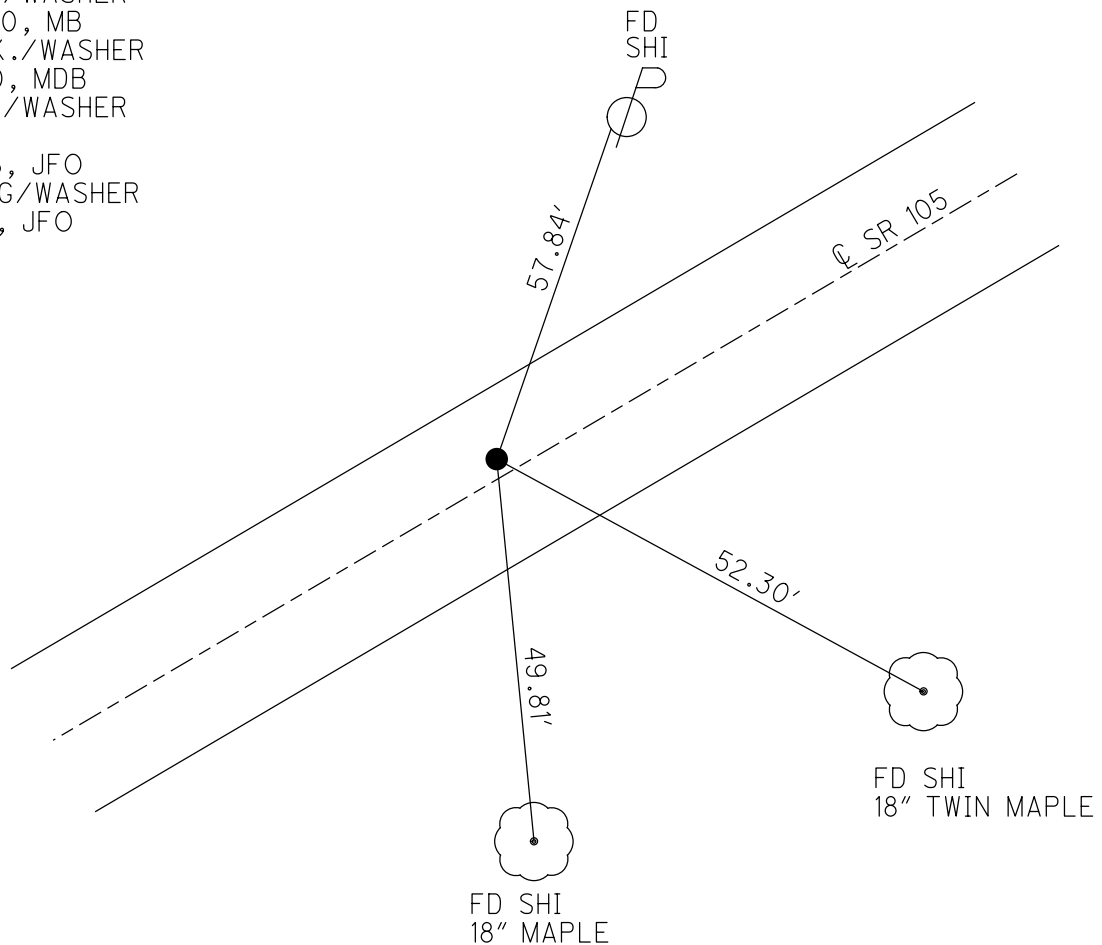
PERSONNEL _____ REFERENCE NO. 93 SHEET 4 OF 42
 NOTES RHOADES DATE 8-1-2019 ROUTE SR 105
 H.C. O'DONNELL WEATHER SUNNY COUNTY OTTAWA
 R.C. MILLER TEMP. 74°F TOWNSHIP HARRIS
 DWG BY AUBLE PID 92131 SECTION 11
 T 6 N R 14 E

TYPE MONUMENT P.K./WASHER
 ON SURFACE - ~~BELOW~~ ON
 OFFSET 0.6' LT : ~~RT~~
9.5' TO LT EDGE PAVEMENT
 STATION: 400+74.58

HORZ.DATUM: NAD83 (2011) GEOID: 2012A
 GRID: NORTHING: 667313.337 EASTING: 1774075.267



RECORD:
 FD P.K./WASHER
 4/24/00, MB
 SET P.K./WASHER
 6-14-00, MDB
 FD P.K./WASHER
 REF93
 4-30-18, JFO
 SET MAG/WASHER
 4-3-20, JFO



O.D.O.T. DISTRICT 2 SURVEY OFFICE

PERSONNEL

REFERENCE NO. 93

SHEET 60 OF 96

NOTES M. BARNHISEL

H.C. M. CANTERBURY

R.C. M. BARNHISEL

DATE 4-24-00

WEATHER SUNNY

TEMP. +60°F

ROUTE S.R. 105

COUNTY OTTAWA

TOWNSHIP HARRIS

SECTION 11

T6 N R 14 E

Drawn By K. MOSER

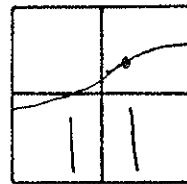
TYPE MONUMENT PK / WASHER

ON SURFACE - ~~BELOW~~ SURFACE

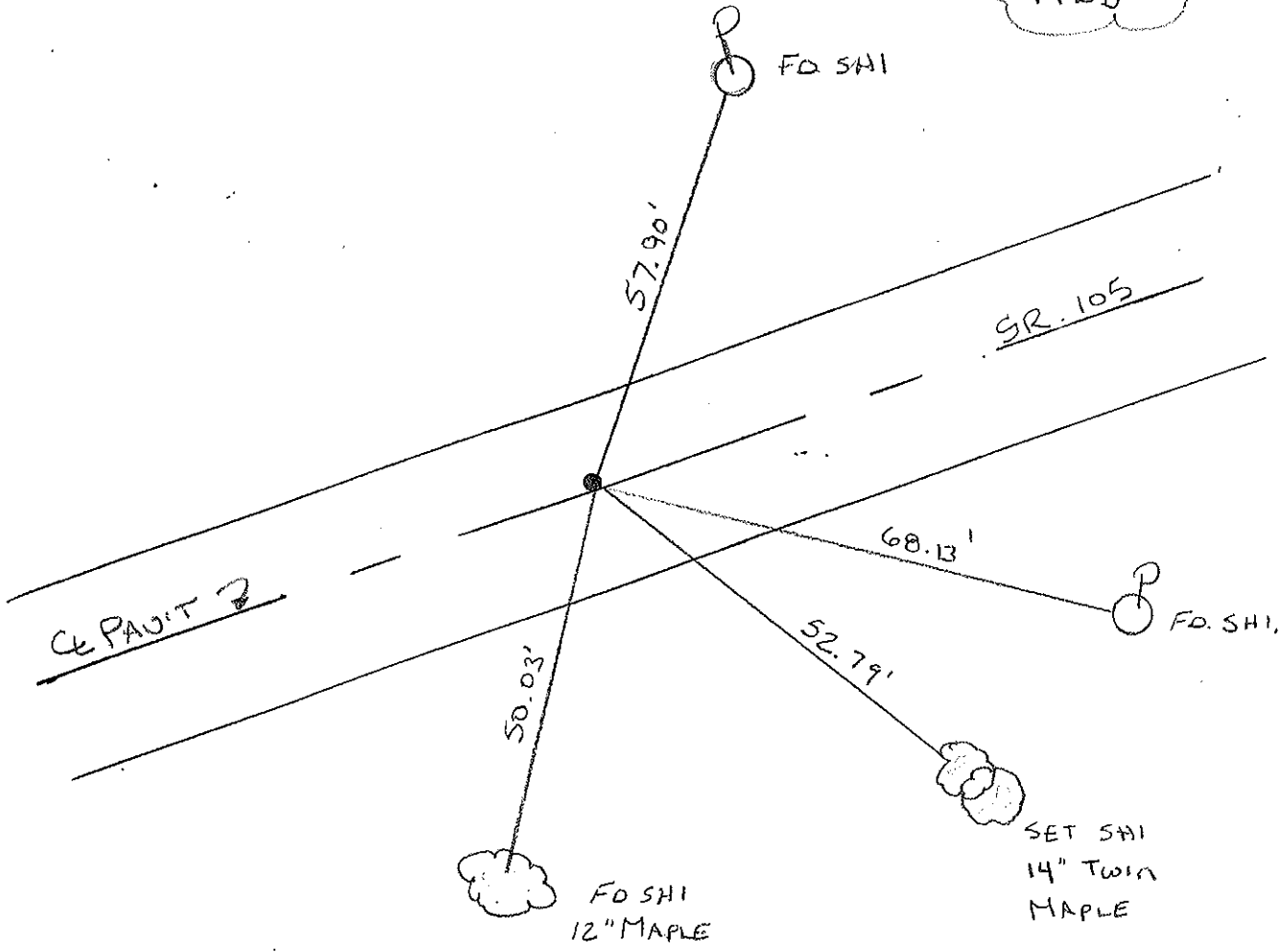
LEFT - ~~C~~ PAV'T. - RIGHT 0.6' Lt.

9.5' TO LT. EDGE PAVEMENT

S.L.M. 401 + 82



RESET PK/WASHER
 6-14-00
 M.D.B.



O.D.O.T. DISTRICT 2 SURVEY OFFICE

PERSONNEL _____ REFERENCE NO. 93 SHEET _____ OF _____

NOTES Cronin DRAWN 6/02/88

H.C. Ripple DATE 8/20/87 ROUTE # 105

R.G. Barbour WEATHER sunny COUNTY Ottawa

Geyman TEMP. 75° TOWNSHIP Harris

SECTION 11

T. 6 N. R. 17 E.

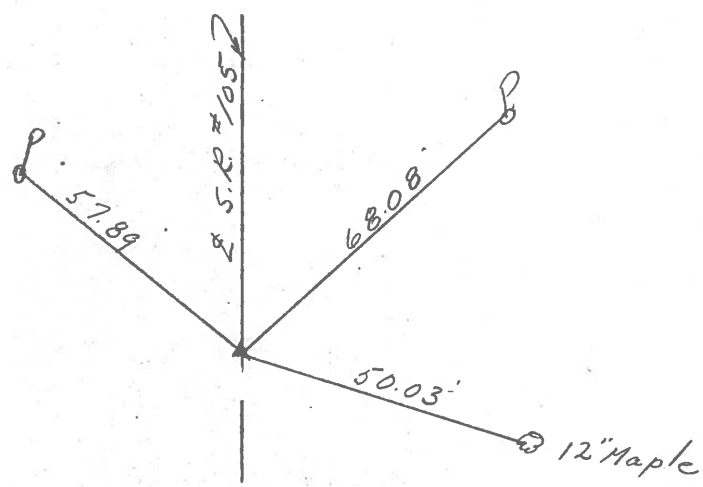
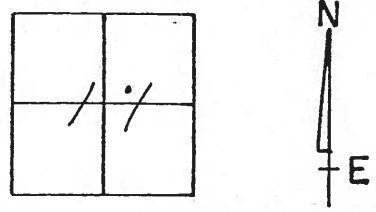
TYPE MONUMENT P.K. & washer

ON SURFACE - BELOW _____

LEFT - € PAV'T. - RIGHT 1'

TO _____ EDGE PAVEMENT

S.L.M. 400 + 98.5



P.K. atop P.K. below
P.K. & washer

PERSONNEL TITLE PERSONNEL TITLE

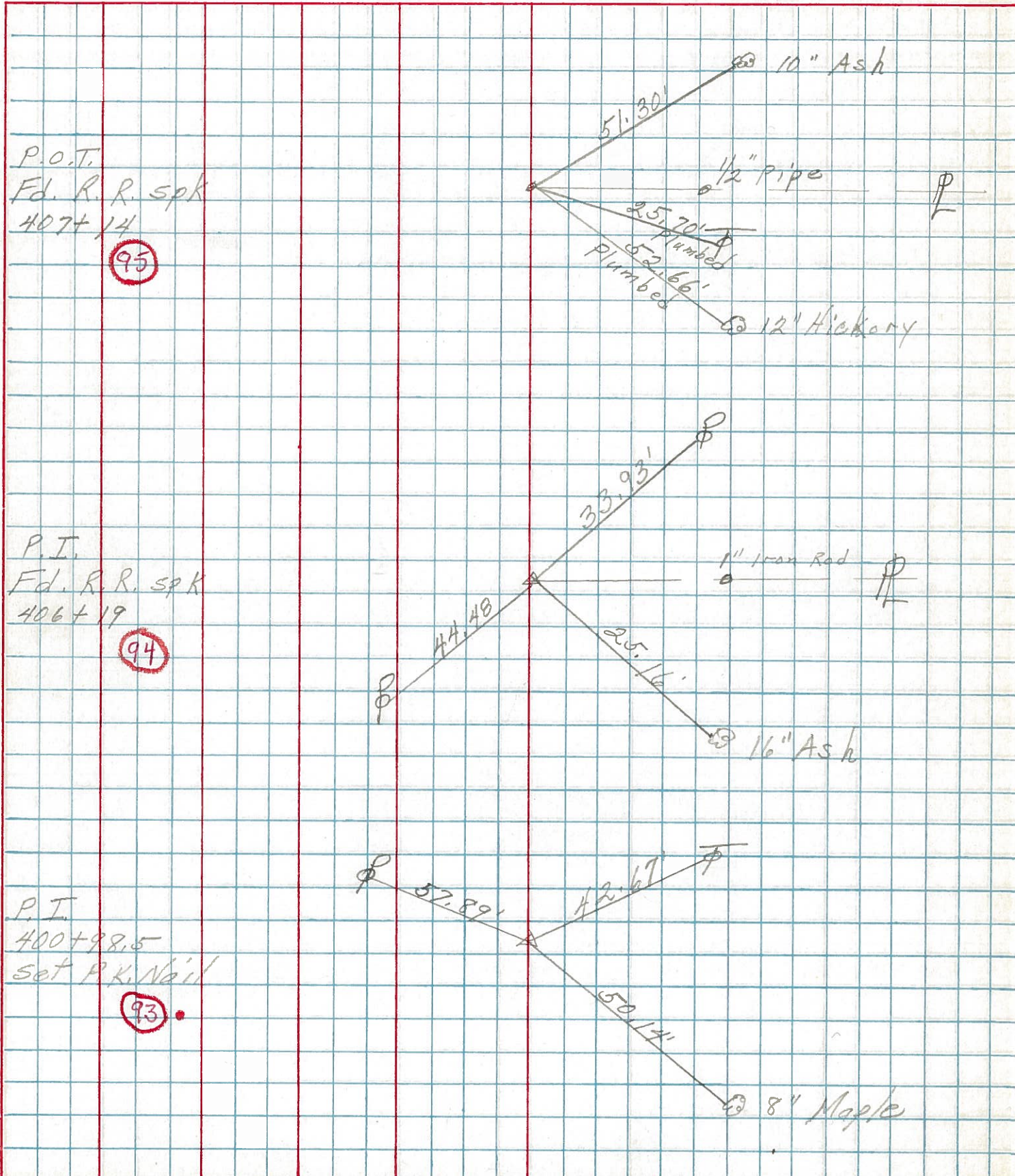
COUNTY Ottawa DATE 5-2-74

S. R. 105 WEATHER Cloudy

SEC. 11 TEMP. 60°

DESCRIPTION Harris Twp.

JOB NO.



P.O.I.
Ed. R. R. Spk
407+14

95

P.I.
Ed. R. R. Spk
406+19

94

P.I.
400+98.5
set P.K. Nail

93