

O.D.O.T. DISTRICT 2 SURVEY OFFICE (USE ONLY)

PERSONNEL

REFERENCE NO. 96

SHEET 7 OF 42

NOTES RHOADES

DATE 8-1-2019

ROUTE SR 105

H.C. O'DONNELL

WEATHER SUNNY

COUNTY OTTAWA

R.C. MILLER

TEMP. 74°F

TOWNSHIP HARRIS

DWG BY AUBLE

PID 92131

SECTION 11

T 6 N R 14 E

TYPE MONUMENT P.K.SHANK

ON SURFACE - ~~BELOW~~ ON

OFFSET \varnothing PAVEMENT 0.8' ~~LT~~ : RT

9.1' TO LT EDGE PAVEMENT

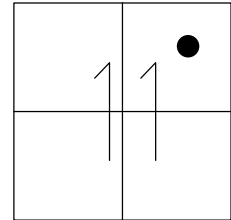
STATION: 408+68.20

HORZ.DATUM: NAD83 (2011)

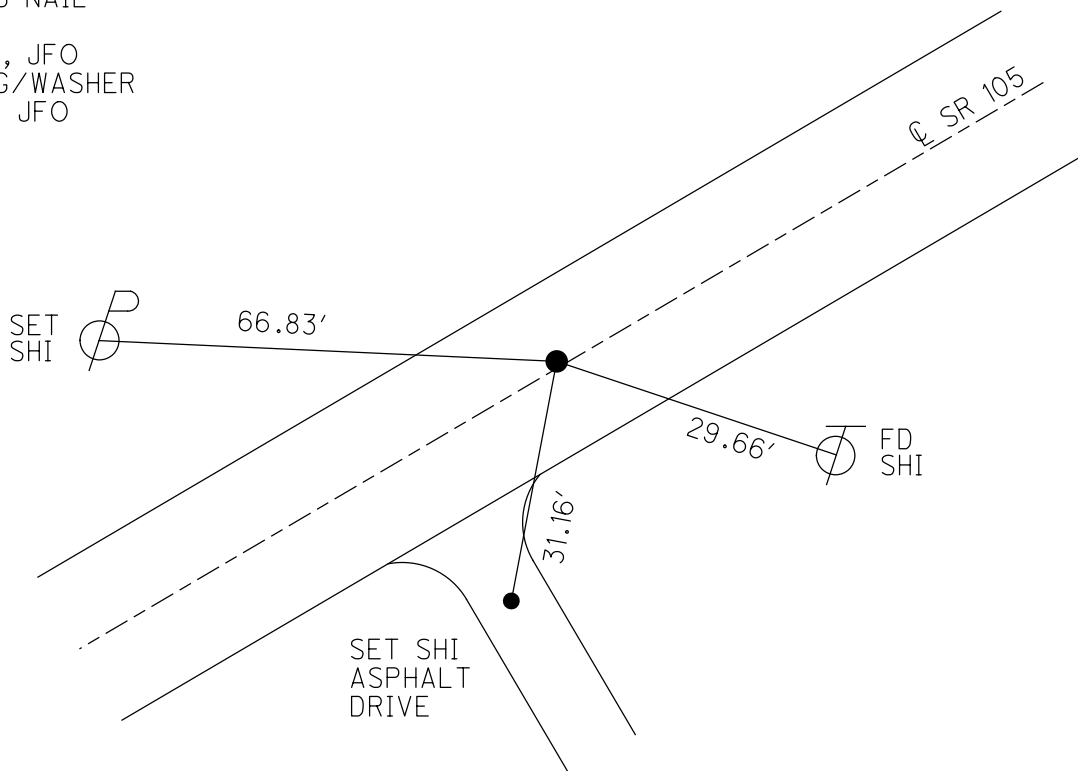
GEOID: 2012A

GRID: NORTHING: 667586.300

EASTING: 1774819.426



RECORD:
 FD LG.R.R.SPIKE
 3" DOWN
 4/24/00, MB
 SET P.K./WASHER
 6-14-00, MDB
 FD P.K.SHANK
 SET MAG NAIL
 REF96
 4-30-18, JFO
 SET MAG/WASHER
 4-3-20, JFO



O.D.O.T. DISTRICT 2 SURVEY OFFICE

PERSONNEL

REFERENCE NO. 96

SHEET 63 OF 96

NOTES M. BARNHISEL

H.C. M. CANTERBURY

DATE 4-24-00

ROUTE 51

R.C. M. BARNHISEL

WEATHER Sunny

COUNTY OTTAWA

TEMP. +60°F

TOWNSHIP HARRIS

Drawn By: K. MOSEK

SECTION 11

T6 N R 14 E

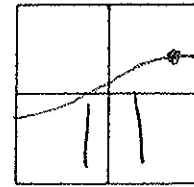
TYPE MONUMENT LEG. R.R. SPIKE

~~ON SURFACE~~ - BELOW 3" BELOW

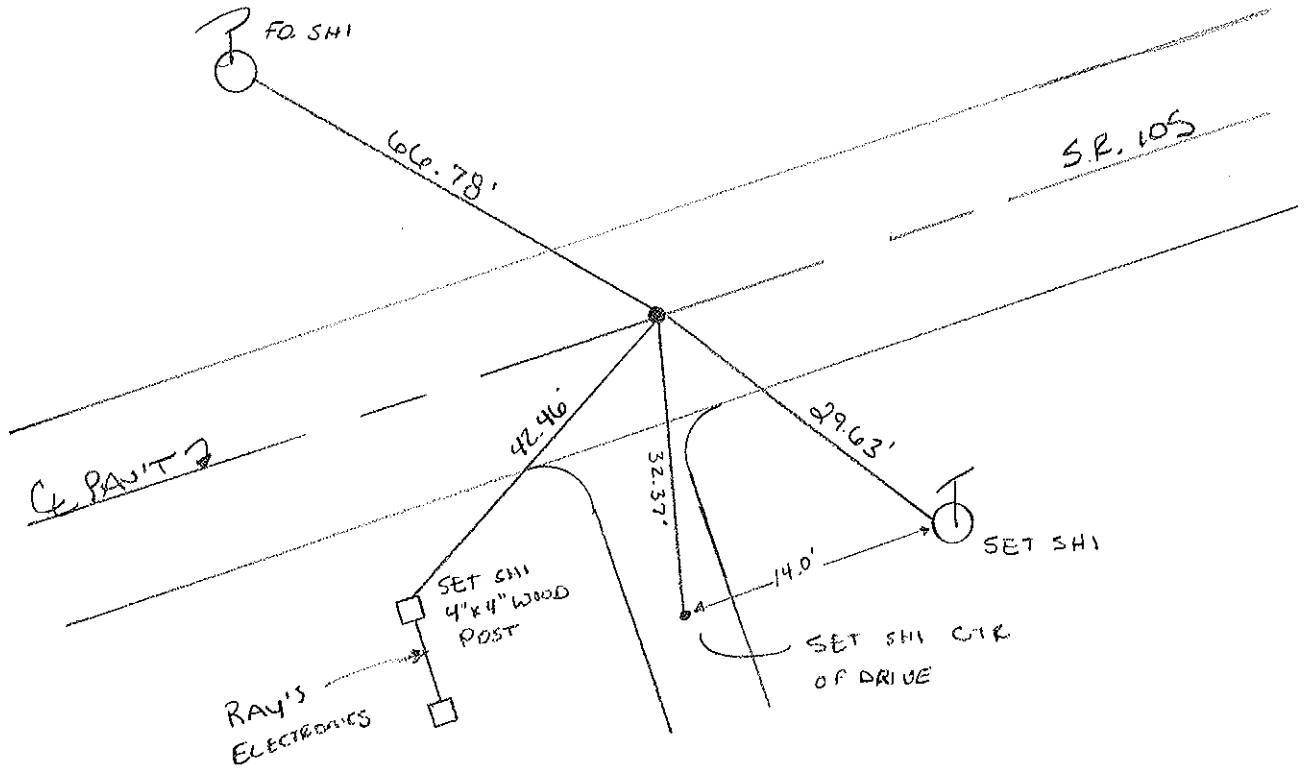
LEFT - C. PAV'T. - RIGHT 0.8' LT

9.1 TO LT. EDGE PAVEMENT

S.L.M. 409 + 76



RESET PK/WASHER
 6-14-00
 MDB



PERSONNEL TITLE PERSONNEL TITLE

COUNTY Ottawa DATE 5-3-74

S. R. 105 WEATHER Fair

SEC. 11 TEMP. 60°

DESCRIPTION Harris Twp.

JOB NO.

