

O.D.O.T. DISTRICT 2 SURVEY OFFICE (USE ONLY)

PERSONNEL

REFERENCE NO. 98

SHEET 9 OF 42

NOTES RHOADES  
 H.C. O'DONNELL  
 R.C. MILLER

DATE 8-1-2019  
 WEATHER SUNNY  
 TEMP. 74°F

ROUTE SR 105  
 COUNTY OTTAWA  
 TOWNSHIP HARRIS  
 SECTION 11  
 T 6 N R 14 E

DWG BY AUBLE PID 92131

TYPE MONUMENT P.K.NAIL

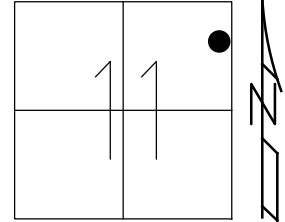
ON SURFACE - ~~BELOW~~ ON

OFFSET 2.0' LT : ~~RT~~  
8.0' TO LT EDGE PAVEMENT

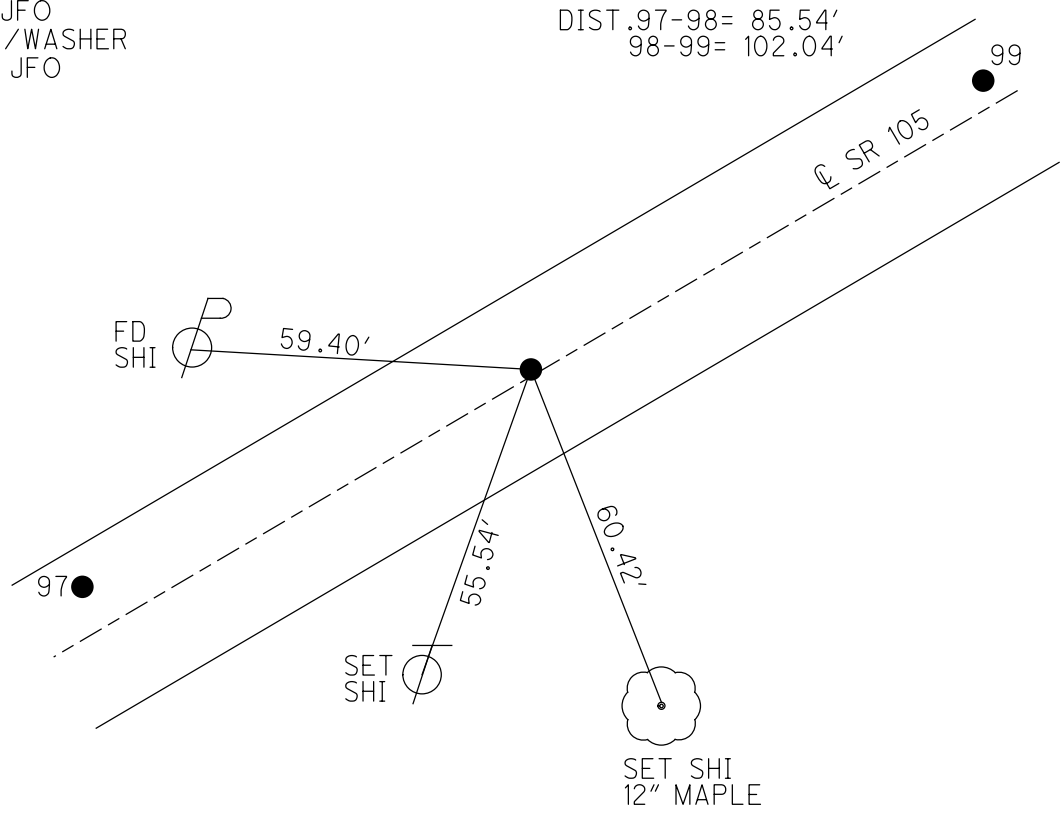
STATION: 410+65.66

HORZ.DATUM: NAD83 (2011) GEOID: 2012A

GRID: NORTHING: 667642.386 EASTING: 1775009.061



RECORD:  
 FD P.K.NAIL  
 4/24/00, MB  
 SET P.K./WASHER  
 6-14-00, MDB  
 FD P.K.NAIL  
 REF98  
 5-8-18, JFO  
 SET MAG/WASHER  
 4-3-20, JFO



# O.D.O.T. DISTRICT 2 SURVEY OFFICE

PERSONNEL

REFERENCE NO. 98

SHEET 65 OF 96

NOTES M. BARWISSEL

H.C. M. CANTERBURY

R.C. M. BARWISSEL

Drawn By: K. MOSER

DATE 4-24-00

WEATHER Sunny

TEMP. 76.0°F

ROUTE S.R. 105

COUNTY OTTAWA

TOWNSHIP HARRIS

SECTION 11

T6 N R 14 E

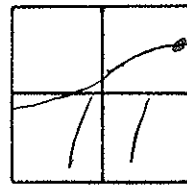
TYPE MONUMENT PK. NAIL

ON SURFACE - ~~BELOW~~ ON SURFACE

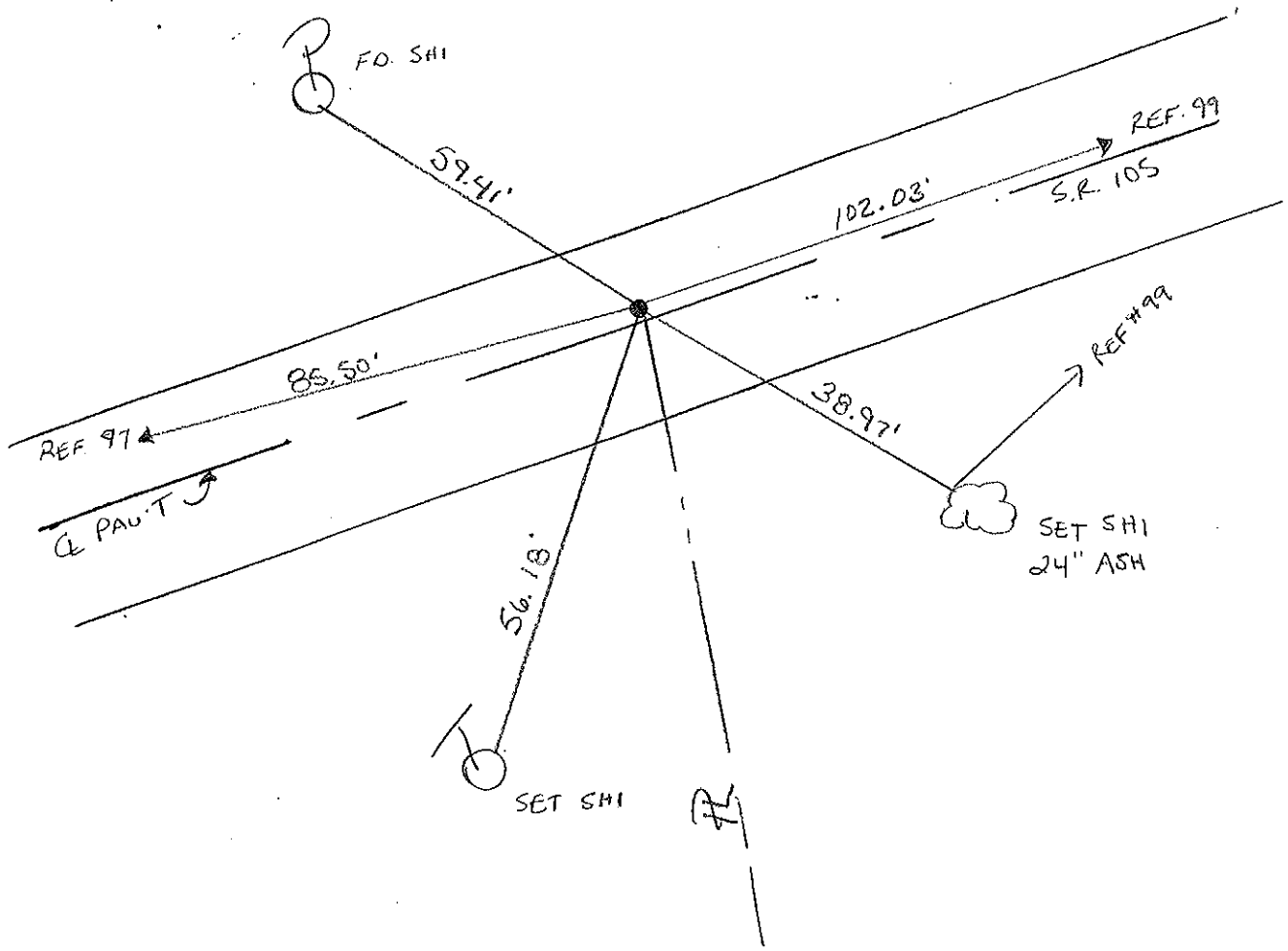
LEFT - ~~C PAV'T~~ RIGHT 2.0' LT

8.0' TO LT. EDGE PAVEMENT

S.L.M. 411 + 71



RESET PK / WASHER  
 6-14-00  
 M.D.B.



PERSONNEL TITLE PERSONNEL TITLE

COUNTY Ottawa

DATE 5-3-74

S. R. 105

WEATHER Fair

SEC. 11

TEMP. 60°

DESCRIPTION Harris Twp.

LEFT

CENTER LINE

RIGHT

JOB NO.

