

O.D.O.T. DISTRICT 2 SURVEY OFFICE (USE ONLY)

PERSONNEL

REFERENCE NO. 100

SHEET 11 OF 42

NOTES RHOADES DATE 8-1-2019
 H.C. O'DONNELL WEATHER SUNNY
 R.C. MILLER TEMP. 74°F

ROUTE SR 105
 COUNTY OTTAWA
 TOWNSHIP HARRIS
 SECTION 11
 T 6 N R 14 E

DWG BY AUBLE PID 92131

TYPE MONUMENT P.K./WASHER

ON SURFACE - ~~BELOW~~ ON

OFFSET Q PAVEMENT ON LT : RT

11.0' TO LT EDGE PAVEMENT

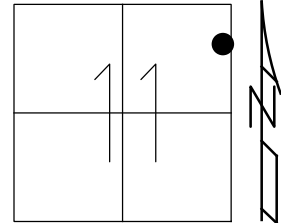
STATION: 413+00.03

HORIZ.DATUM: NAD83 (2011)

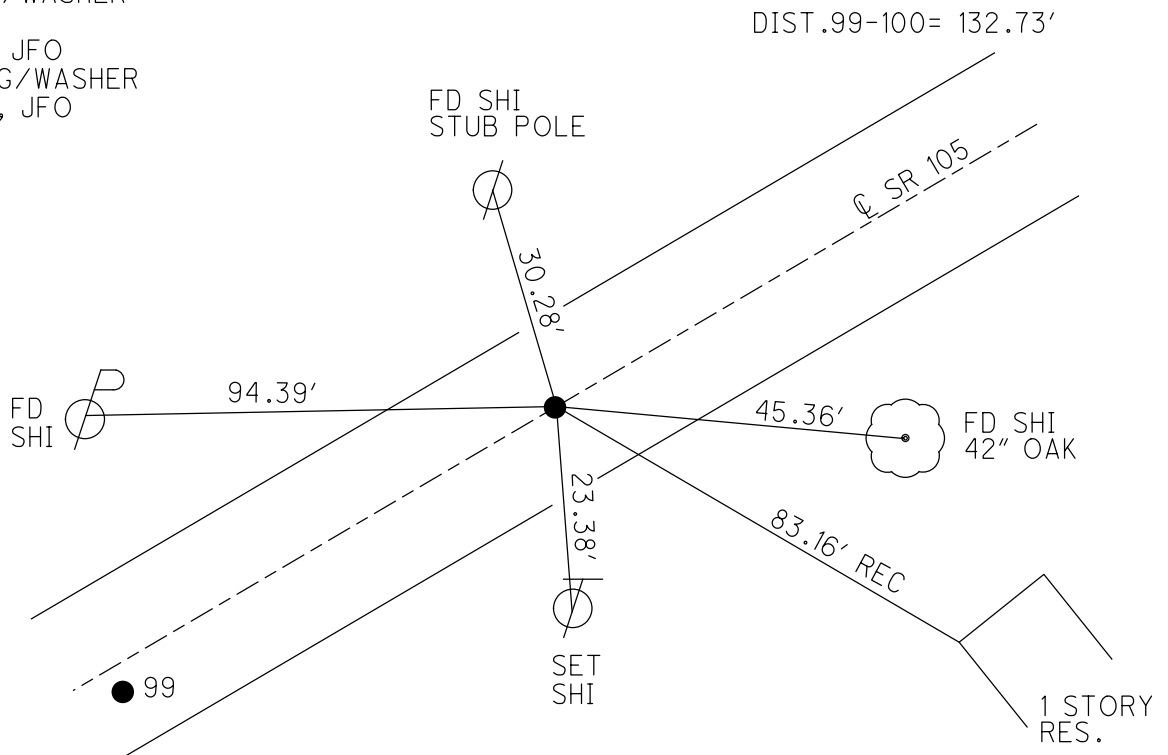
GEOID: 2012A

GRID: NORTHING: 667688.153

EASTING: 1775239.363



RECORD:
 FD SM.R.R.SPIKE
 3" DOWN
 4/24/00, MB
 SET P.K./WASHER
 6-14-00, MDB
 FD P.K./WASHER
 REF100
 5-8-18, JFO
 SET MAG/WASHER
 4-3-20, JFO



O.D.O.T. DISTRICT 2 SURVEY OFFICE

PERSONNEL

REFERENCE NO. 100

SHEET 67 OF 96

NOTES M. BARNHISEL

H.C. M. CANTERBURY

R.C. M. BARNHISEL

DATE 4-24-00

WEATHER Sunny

TEMP. 76.0°F

Drawn by R. Moser

ROUTE S.R. 105

COUNTY OTTAWA

TOWNSHIP HARRIS

SECTION 11

T6 N R 14 E

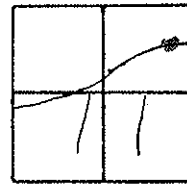
TYPE MONUMENT Small R.R. SPIKE

ON SURFACE - BELOW 3" Below

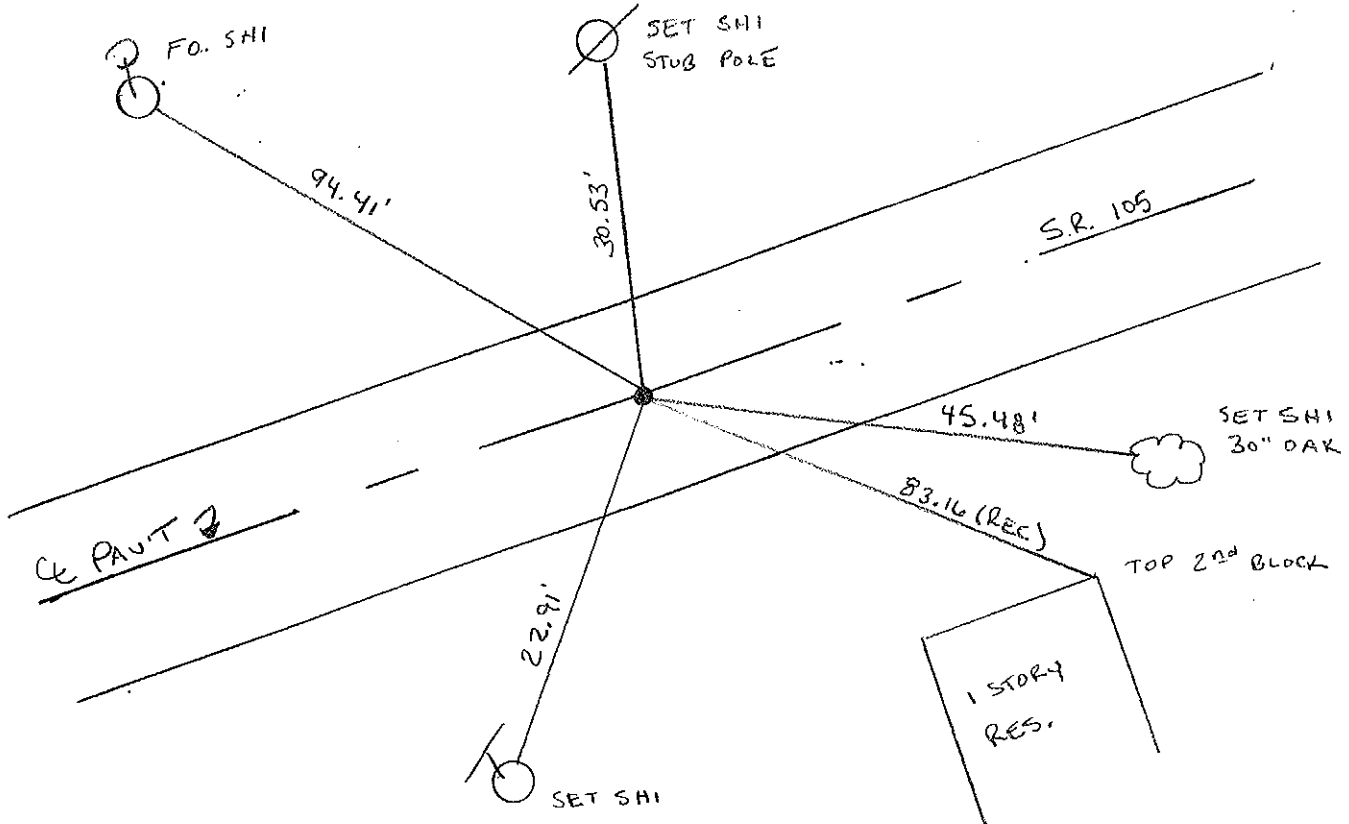
LEFT - CL PAV'T. - RIGHT CL

11.0' TO LT EDGE PAVEMENT

S.L.M. 414 + 07



RESET PK / WASHER
6.14.00
MRB.



PERSONNEL TITLE PERSONNEL TITLE

COUNTY Ottawa

DATE 5-7-74

S. R. 105

WEATHER cool

SEC. 11 & 12

TEMP. 40°

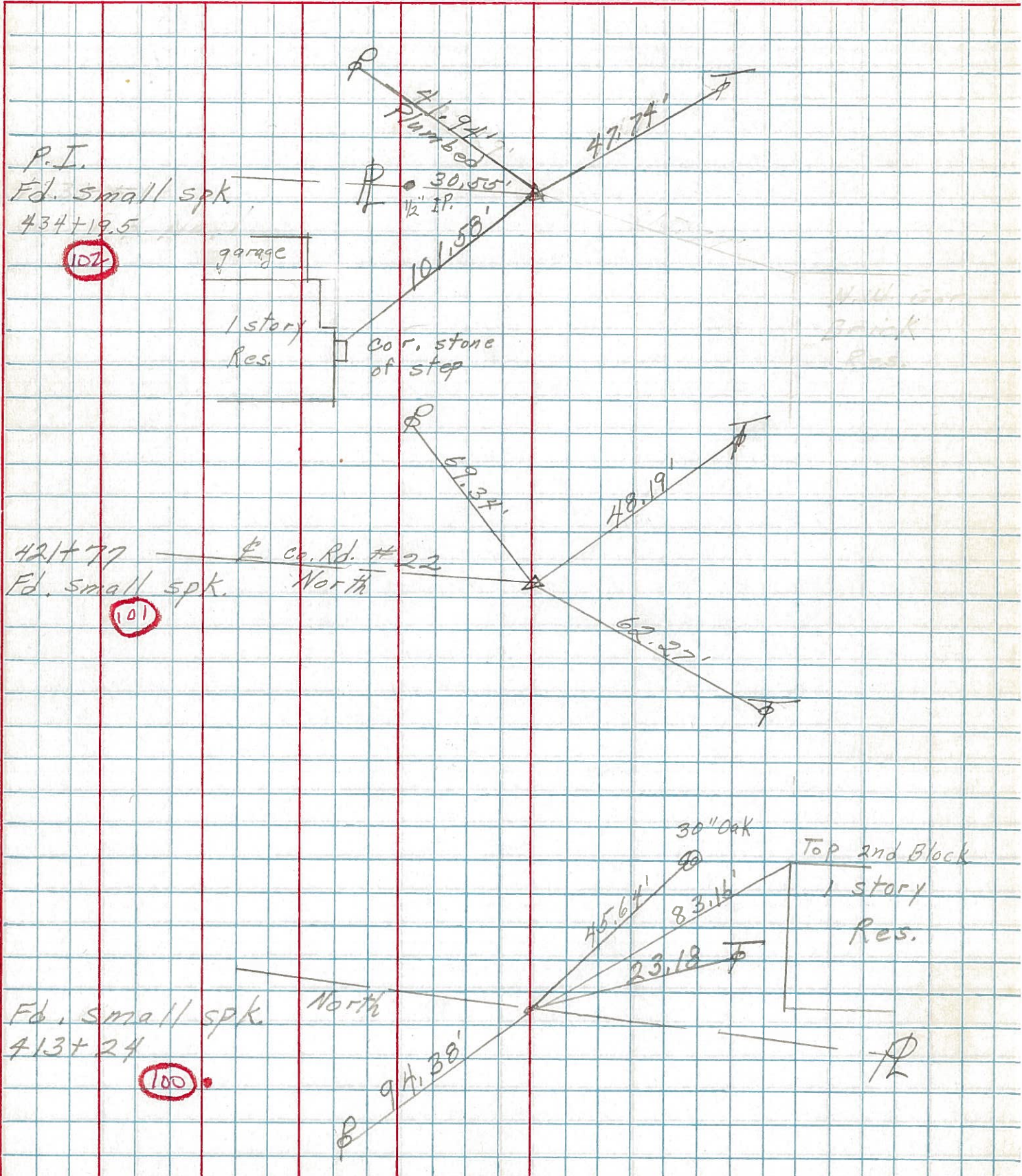
DESCRIPTION Harris Twp.

JOB NO.

LEFT

CENTER LINE

RIGHT



PERSONNEL TITLE PERSONNEL TITLE

Schneider

COUNTY Ottawa

DATE 7-8-68

Mosser

S. R. 105

WEATHER Cloudy-No.

Barbour

SEC. Sam Co. Line to Oak Harbor

TEMP. 90°

Potts

DESCRIPTION Ties for Control Points

JOB NO.

LEFT

CENTER LINE

RIGHT

