

O.D.O.T. DISTRICT 2 SURVEY OFFICE (USE ONLY)

PERSONNEL

REFERENCE NO. 102

SHEET 13 OF 42

NOTES RHOADES DATE 8-1-2019
 H.C. O'DONNELL WEATHER SUNNY
 R.C. MILLER TEMP. 78°F

ROUTE SR 105
 COUNTY OTTAWA
 TOWNSHIP HARRIS
 SECTION 12

DWG BY AUBLE PID 92131

T 6 N R 14 E

TYPE MONUMENT P.K./WASHER

ON SURFACE - ~~BELOW~~ ON

OFFSET \odot PAVEMENT 0.5' ~~LT~~ : RT

10.4' TO LT EDGE PAVEMENT

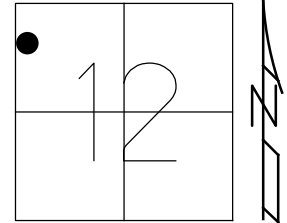
STATION: 433+95.19

HORZ.DATUM: NAD83 (2011)

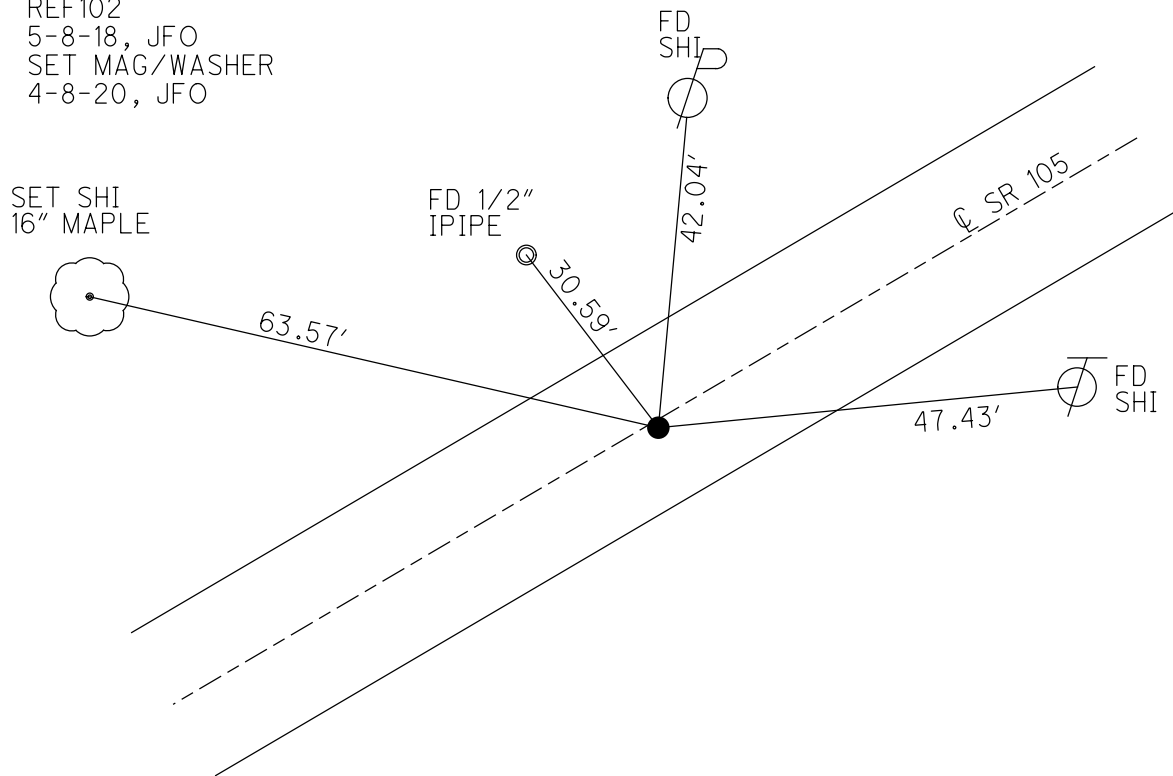
GEOID: 2012A

GRID: NORTHING: 668079.838

EASTING: 1777297.558



RECORD:
 FD P.K./WASHER
 3" DOWN
 4/24/00, MB
 SET P.K./WASHER
 6-9-00, KPM
 FD P.K./WASHER
 REF102
 5-8-18, JFO
 SET MAG/WASHER
 4-8-20, JFO



O.D.O.T. DISTRICT 2 SURVEY OFFICE

PERSONNEL

REFERENCE NO. 102

SHEET 09 OF 96

NOTES M. BARNHISEL

H.C. M. CAUTERBURY

R.C. M. BARNHISEL

DRAWN BY: K. MOSER

DATE 4-24-00

WEATHER Sunny

TEMP. +6.00°F

ROUTE S.R. 105

COUNTY OTTAWA

TOWNSHIP HARRIS

SECTION 12

T6 N R 14 E

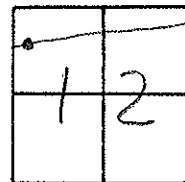
TYPE MONUMENT PK / WASHER

~~ON SURFACE~~ - BELOW 3" BELOW

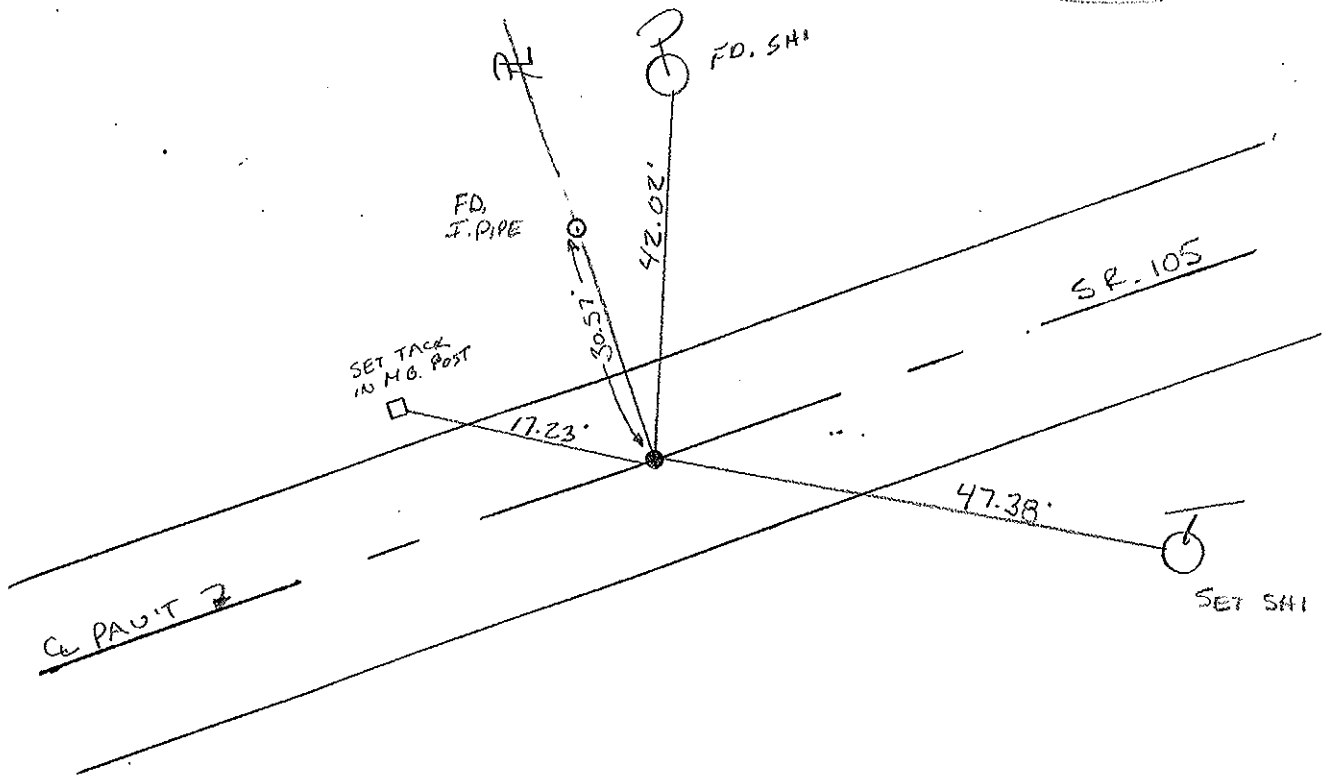
LEFT - C PAV'T. RIGHT 0.5' LT.

10.4 TO LT. EDGE PAVEMENT

S.L.M. 435+11



RESET PK / WASHER
6-9-00
KPM



O.D.O.T. DISTRICT 2 SURVEY OFFICE

PERSONNEL

NOTES Cronin
 H.C. Ripple
 R.C. Barbour
Geyman

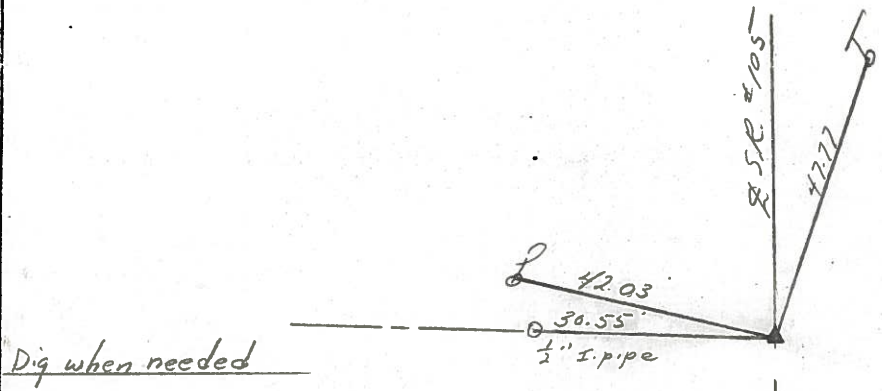
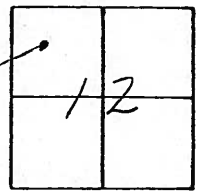
REFERENCE NO. 102

DRAWN 6/02/88
 DATE 8/20/87
 WEATHER sunny
 TEMP. 75°

SHEET _____ OF _____

ROUTE #105
 COUNTY Ottawa
 TOWNSHIP Harris
 SECTION 12
 T 6 N R 14 E

TYPE MONUMENT P.K. atop pony spike
 ON SURFACE - BELOW _____
 LEFT - CL PAV'T. - RIGHT _____
 _____ TO _____ EDGE PAVEMENT
 S.L.M. 434+19.5



PERSONNEL TITLE PERSONNEL TITLE

COUNTY Ottawa

DATE 5-7-74

S. R. 105

WEATHER cool

SEC. 11 & 12

TEMP. 40°

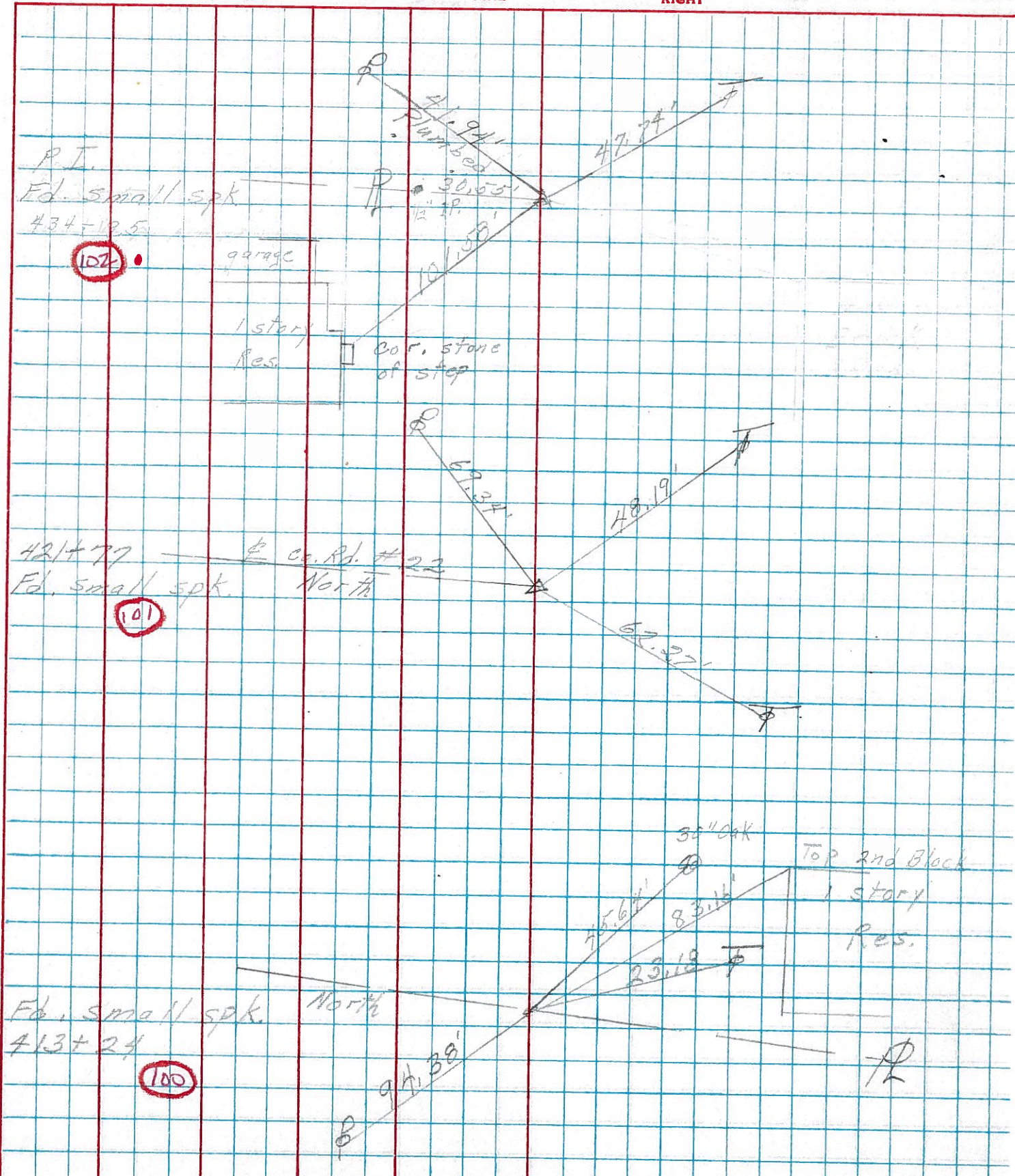
DESCRIPTION Harris Twp.

JOB NO.

LEFT

CENTER LINE

RIGHT



PERSONNEL TITLE PERSONNEL TITLE

Schneider
 Mosser
 Barbour
 Potts

COUNTY Ottawa DATE 7-8-68
 S. R. 105 WEATHER cloudy-Hot
 SEC. Sam Co. Line to Oak Harbor TEMP. 90°

DESCRIPTION Ties for Control Points JOB NO. _____

