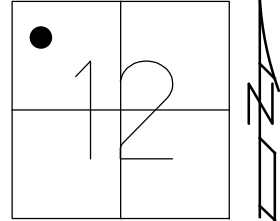


O.D.O.T. DISTRICT 2 SURVEY OFFICE (USE ONLY)

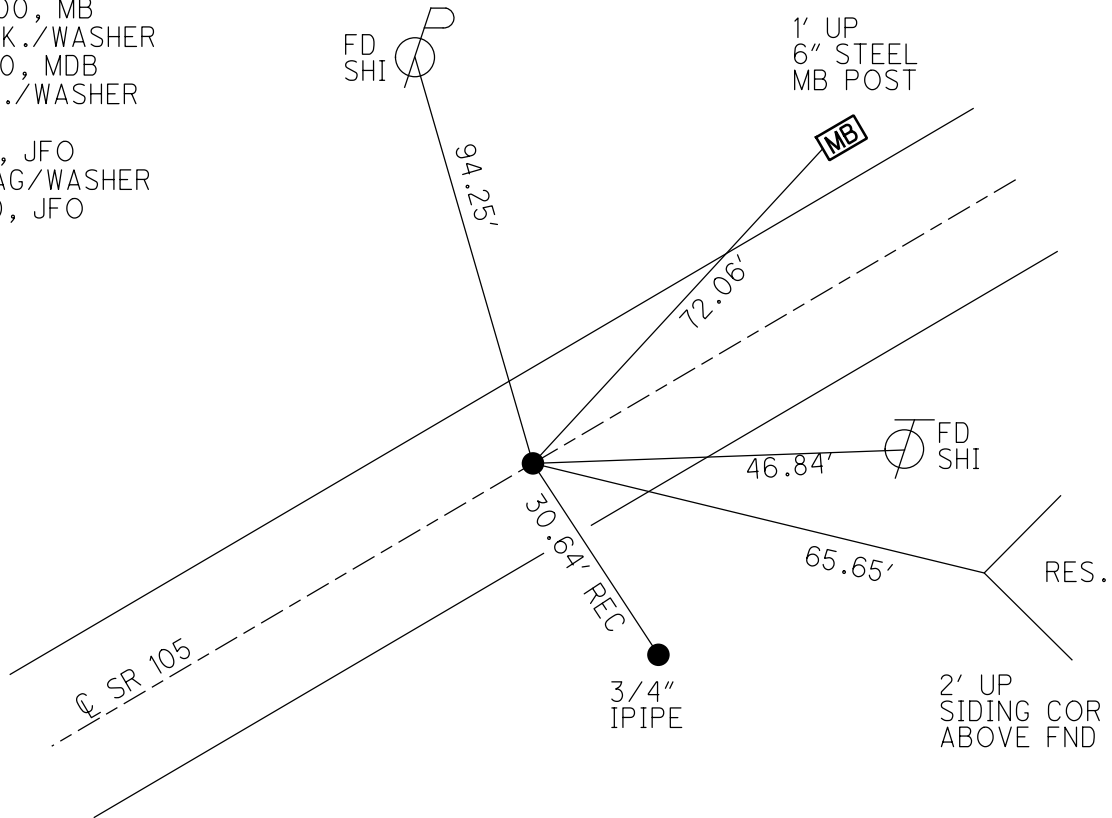
| | | |
|-----------------------|--------------------------|------------------------------|
| PERSONNEL | REFERENCE NO. <u>103</u> | SHEET <u>14</u> OF <u>42</u> |
| NOTES <u>RHOADES</u> | DATE <u>8-1-2019</u> | ROUTE <u>SR 105</u> |
| H.C. <u>O'DONNELL</u> | WEATHER <u>SUNNY</u> | COUNTY <u>OTTAWA</u> |
| R.C. <u>MILLER</u> | TEMP. <u>78°F</u> | TOWNSHIP <u>HARRIS</u> |
| | | SECTION <u>12</u> |
| DWG BY <u>AUBLE</u> | PID <u>92131</u> | T <u>6</u> N R <u>14</u> E |

TYPE MONUMENT P.K./WASHER
 ON SURFACE - ~~BELOW~~ ON
 OFFSET ☉ PAVEMENT ON LT : RT
10.5' TO RT EDGE PAVEMENT
 STATION: 446+74.55



HORZ.DATUM: NAD83 (2011) GEOID: 2012A
 GRID: NORTHING: 668340.542 EASTING: 1778550.068

RECORD:
 FD P.K./WASHER
 3" DOWN
 4/24/00, MB
 SET P.K./WASHER
 6-14-00, MDB
 FD P.K./WASHER
 REF103
 5-8-18, JFO
 SET MAG/WASHER
 4-8-20, JFO



O.D.O.T. DISTRICT 2 SURVEY OFFICE

PERSONNEL

REFERENCE NO. 103

SHEET 20 OF 96

NOTES M. BARNHISEL

H.C. M. CAULFIELD

R.C. M. BARNHISEL

DATE 4-24-00

WEATHER Sunny

TEMP. +60°F

ROUTE S.R. 105

COUNTY OTTAWA

TOWNSHIP HARRIS

SECTION 12

T6 N R14 E

Drawn By: K. MOSER

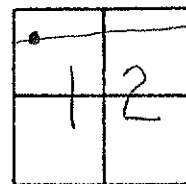
TYPE MONUMENT PK / WASHER

~~ON SURFACE~~ - BELOW 3" BELOW

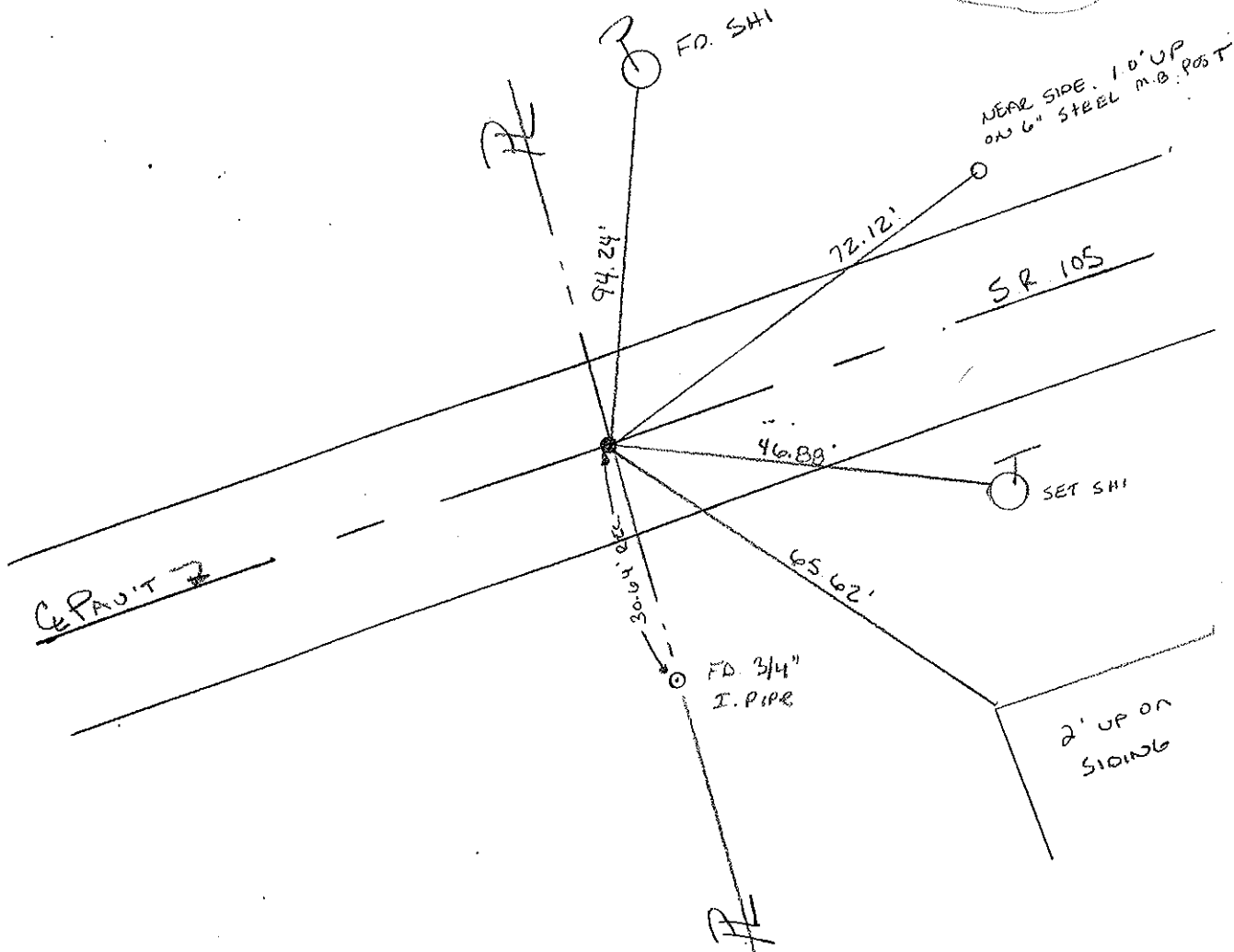
~~LEFT - & PAV'T. - RIGHT & PAV'T~~

10.5' TO RT. EDGE PAVEMENT

S.L.M. 447 789



RESET PK/WASHER
 6-14-00
 MJB



PERSONNEL TITLE PERSONNEL TITLE

COUNTY Ottawa DATE 5-20-74

S. R. 105 WEATHER Fair-windy

SEC. 12 TEMP. 53°

DESCRIPTION Harris Twp. JOB NO. _____

LEFT CENTER LINE RIGHT

