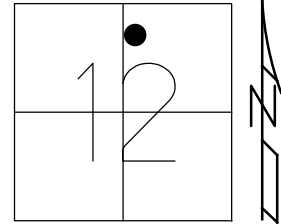


O.D.O.T. DISTRICT 2 SURVEY OFFICE (USE ONLY)

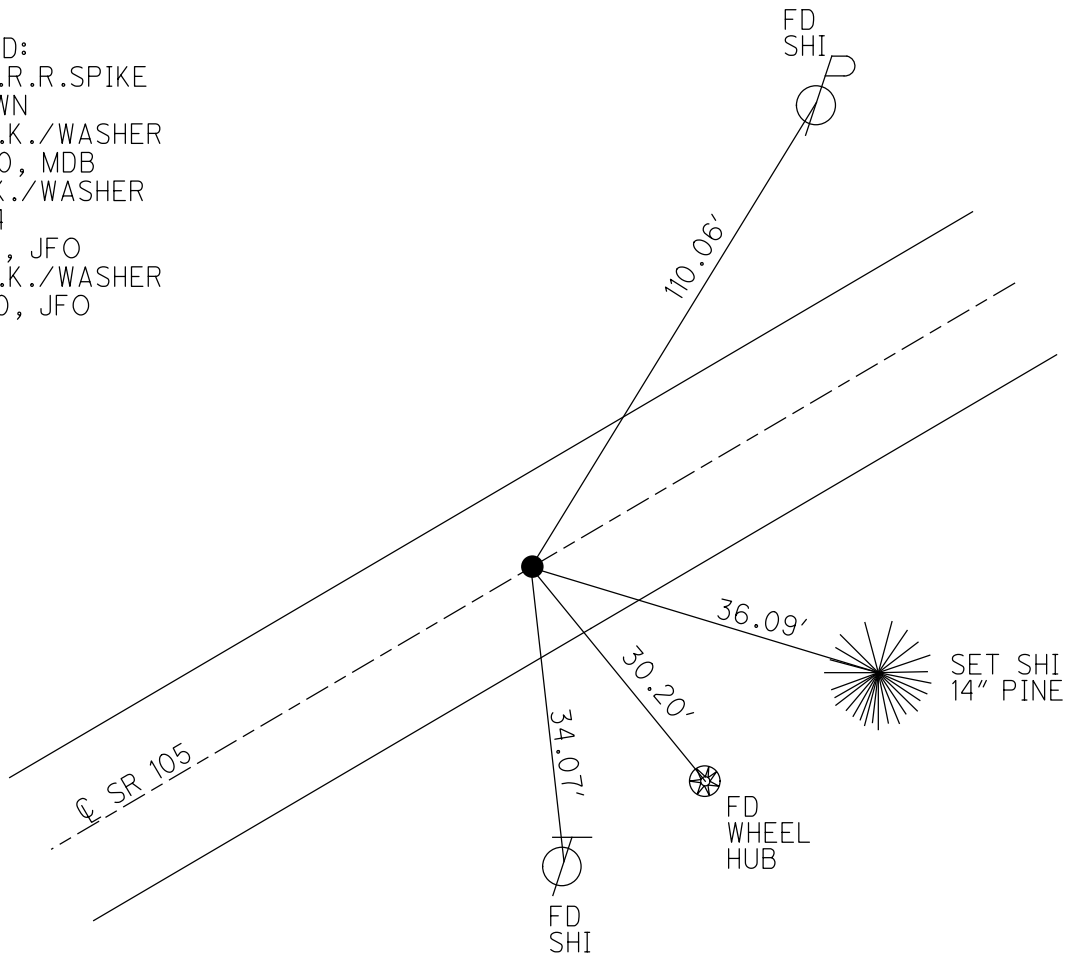
PERSONNEL _____ REFERENCE NO. 104 SHEET 15 OF 42
 NOTES RHOADES DATE 8-1-2019 ROUTE SR 105
 H.C. O'DONNELL WEATHER SUNNY COUNTY OTTAWA
 R.C. MILLER TEMP. 78°F TOWNSHIP HARRIS
 _____ SECTION 12
 DWG BY AUBLE PID 92131 T 6 N R 14 E

TYPE MONUMENT P.K./WASHER
 ON SURFACE - ~~BELOW~~ ON
 OFFSET Q PAVEMENT ON LT : RT
10.5' TO RT EDGE PAVEMENT
 STATION: 449+04.56

HORZ.DATUM: NAD83 (2011) GEOID: 2012A
 GRID: NORTHING: 668388.282 EASTING: 1778775.074



RECORD:
 FD LG.R.R.SPIKE
 3" DOWN
 SET P.K./WASHER
 6-9-00, MDB
 FD P.K./WASHER
 REF104
 5-8-18, JFO
 SET P.K./WASHER
 4-8-20, JFO



O.D.O.T. DISTRICT 2 SURVEY OFFICE

PERSONNEL

REFERENCE NO. 104

SHEET 71 OF 96

NOTES M. BARNHISEL

H.C. M. CAUTERBURY

R.C. M. BARNHISEL

Drawn By: K. Mosek

DATE 4-24-00

WEATHER Sunny

TEMP. +6.0°F

ROUTE S.R. 105

COUNTY OTTAWA

TOWNSHIP HARRIS

SECTION 12

T6 N R 14 E

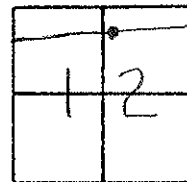
TYPE MONUMENT LG. R.R. SPIKE

~~ON SURFACE~~ - BELOW 3" Below

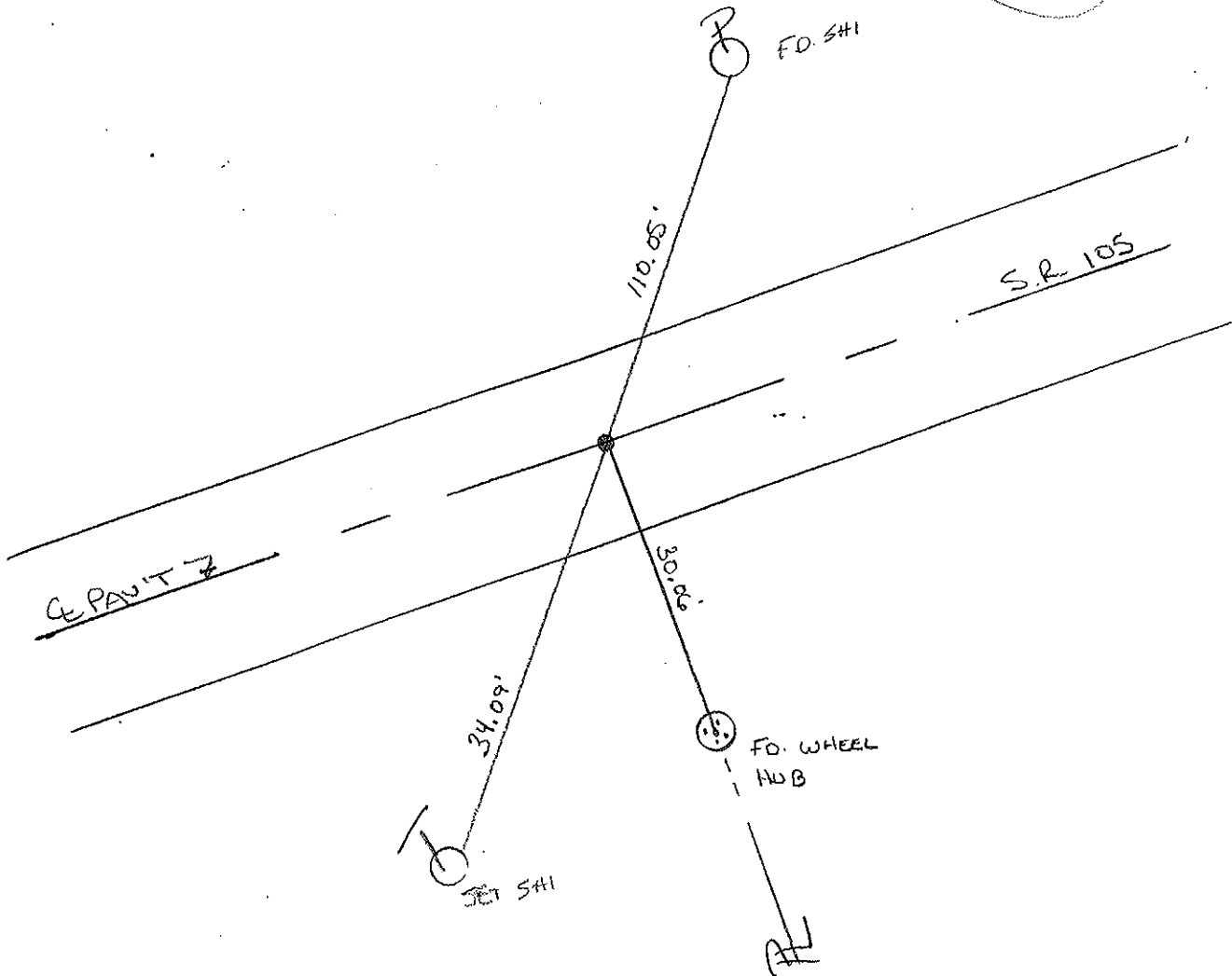
~~LEFT - C. PAV'T. - RIGHT~~ C. PAV'T

10.6' TO RT. EDGE PAVEMENT

S.L.M. 450+21



RESET PE WASHER
 6-9-00
 MAB



PERSONNEL TITLE PERSONNEL TITLE

COUNTY Ottawa DATE 5-20-74

S. R. 105 WEATHER Fair-windy

SEC. 12 TEMP. 55°

DESCRIPTION Harris Twp. JOB NO.

LEFT CENTER LINE RIGHT

