

O.D.O.T. DISTRICT 2 SURVEY OFFICE (USE ONLY)

PERSONNEL

REFERENCE NO. 105

SHEET 16 OF 42

NOTES RHOADES

DATE 8-1-2019

ROUTE SR 105

H.C. O'DONNELL

WEATHER SUNNY

COUNTY OTTAWA

R.C. MILLER

TEMP. 78°F

TOWNSHIP HARRIS

SECTION 12

DWG BY AUBLE

PID 92131

T 6 N R 14 E

TYPE MONUMENT P.K.NAIL

ON SURFACE - ~~BELOW~~ ON

OFFSET Q PAVEMENT 1.4' ~~±~~ : RT

9.3' TO RT EDGE PAVEMENT

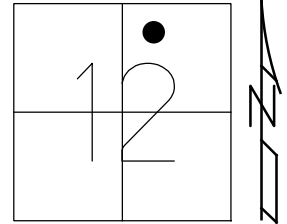
STATION: 451+44.63

HORZ.DATUM: NAD83 (2011)

GEOID: 2012A

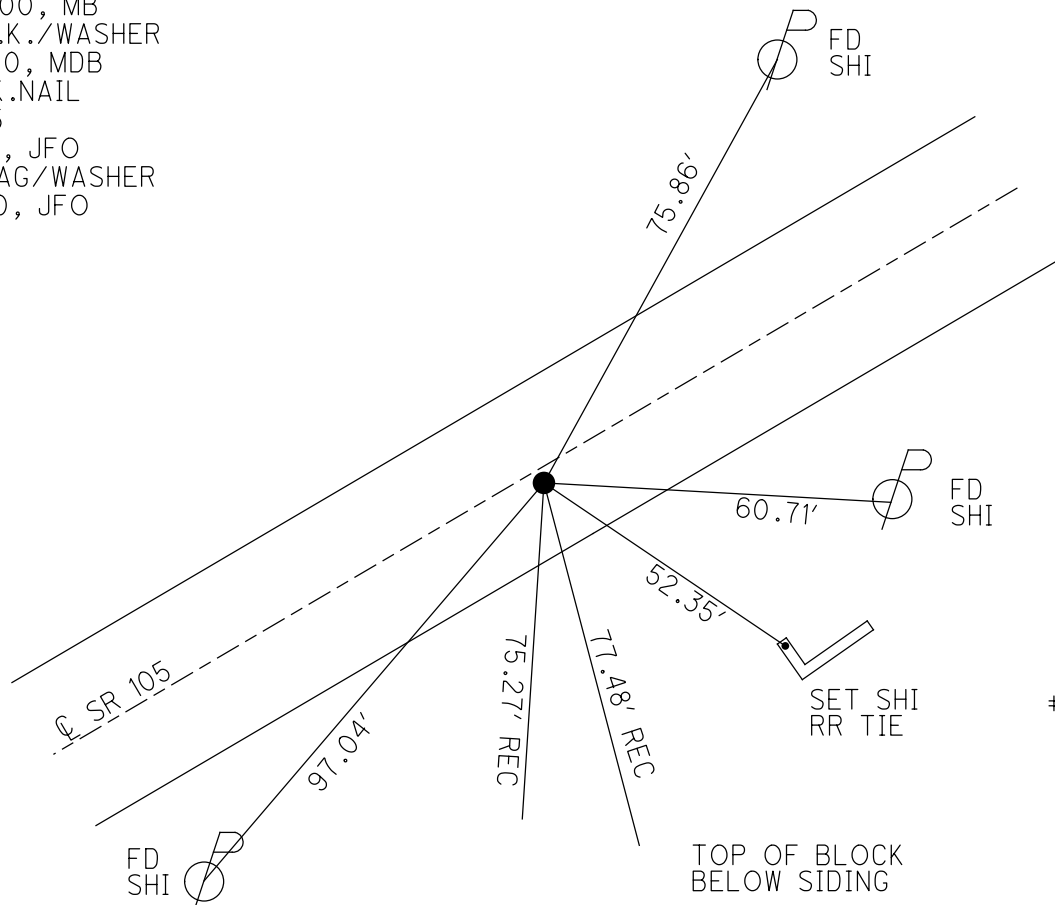
GRID: NORTHING: 668438.098

EASTING: 1779009.916



RECORD:

- FD P.K./WASHER
- 4/24/00, MB
- SET P.K./WASHER
- 6-14-00, MDB
- FD P.K.NAIL
- REF105
- 5-8-18, JFO
- SET MAG/WASHER
- 4-8-20, JFO



#13418

O.D.O.T. DISTRICT 2 SURVEY OFFICE

PERSONNEL

REFERENCE NO. 105

SHEET 72 OF 96

NOTES M. BARNHISEL

H.C. M. CAUTERBURY

R.C. M. BARNHISEL

Drawn By: K. Moser

DATE 4-24-00

WEATHER Sunny

TEMP. +6.0°F

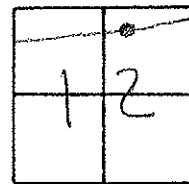
ROUTE S.R. 105

COUNTY OTTAWA

TOWNSHIP HARRIS

SECTION 12

T6 N R14 E



TYPE MONUMENT PK WASHER

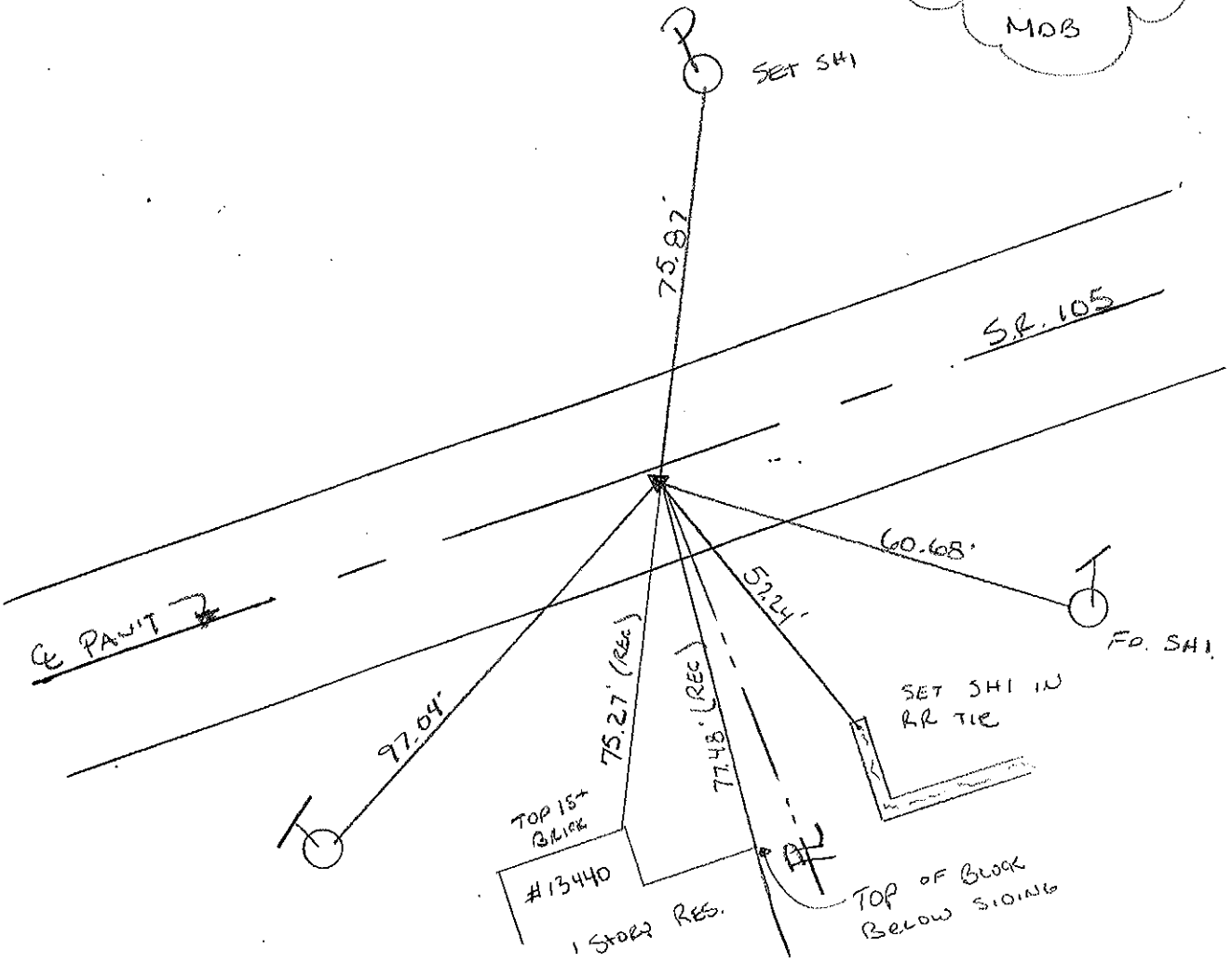
ON SURFACE - ~~BELOW~~ SURFACE

LEFT - ~~C~~ PAV'T. - RIGHT 1.4'

9.3' TO RT EDGE PAVEMENT

S.L.M. 452 +60

RESET PK WASHER
 6-14-00
 MOB



O.D.O.T. DISTRICT 2 SURVEY OFFICE

PERSONNEL

NOTES Cronin
 H.C. Ripple
 R.C. Barbour
Geyman

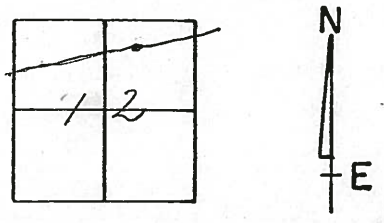
REFERENCE NO. 105

DRAW 6/06/88
 DATE 8/20/87
 WEATHER sunny
 TEMP. 75°

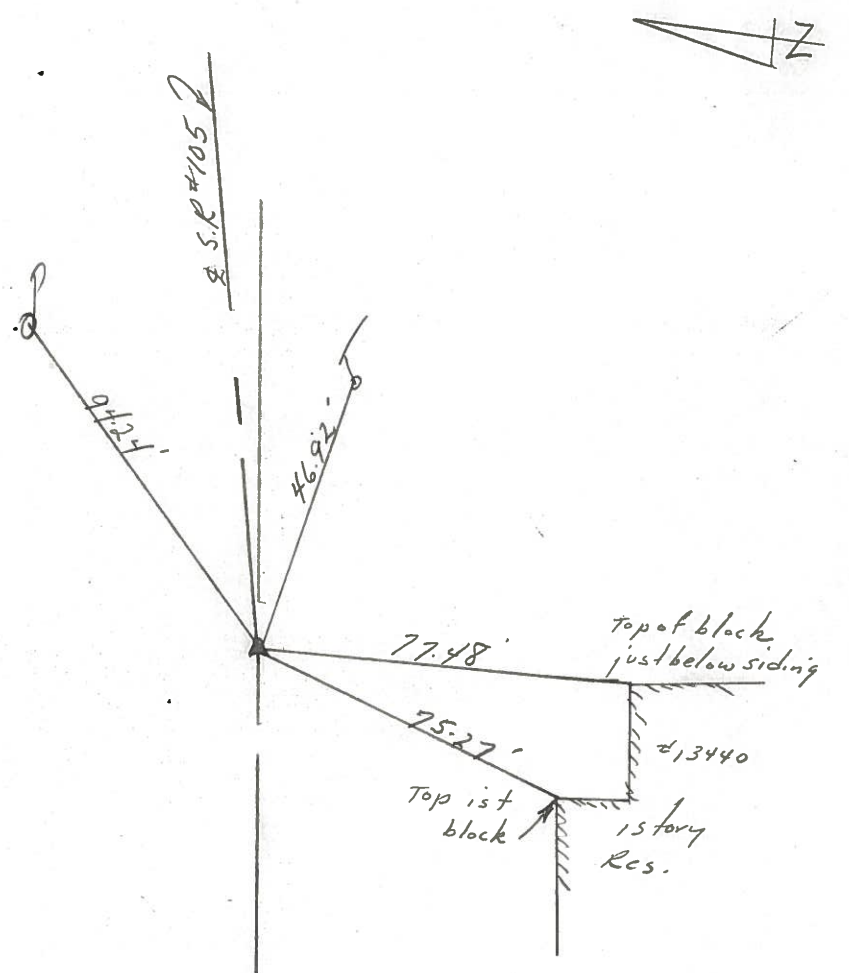
SHEET _____ OF _____

ROUTE # 105
 COUNTY ottawa
 TOWNSHIP Harris
 SECTION 12
T 6 N R 14 E

TYPE MONUMENT P.K. & washer
 ON SURFACE - BELOW _____
 LEFT - CL PAV'T. - RIGHT 1'
 TO _____ EDGE PAVEMENT
 S.L.M. 751+68.5



P.K. & R.R. spike
below P.K. & washer



PERSONNEL TITLE PERSONNEL TITLE

COUNTY Ottawa DATE 5-20-74

S. R. 105 WEATHER Fair-windy

SEC. 12 TEMP. 53°

DESCRIPTION Harris Twp.

JOB NO.

LEFT CENTER LINE RIGHT

