

O.D.O.T. DISTRICT 2 SURVEY OFFICE (USE ONLY)

PERSONNEL

REFERENCE NO. 106

SHEET 17 OF 42

NOTES RHOADES

DATE 8-1-2019

ROUTE SR 105

H.C. O'DONNELL

WEATHER SUNNY

COUNTY OTTAWA

R.C. MILLER

TEMP. 78°F

TOWNSHIP HARRIS

SECTION 12

DWG BY AUBLE

PID 92131

T 6 N R 14 E

TYPE MONUMENT P.K./WASHER

ON SURFACE - ~~BELOW~~ ON

OFFSET 0.8' ~~ET~~ : RT

9.4' TO RT EDGE PAVEMENT

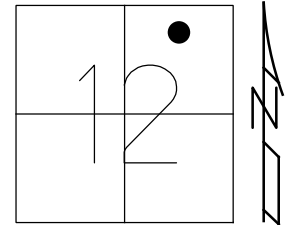
STATION: 459+68.73

HORZ.DATUM: NAD83 (2011)

GEOID: 2012A

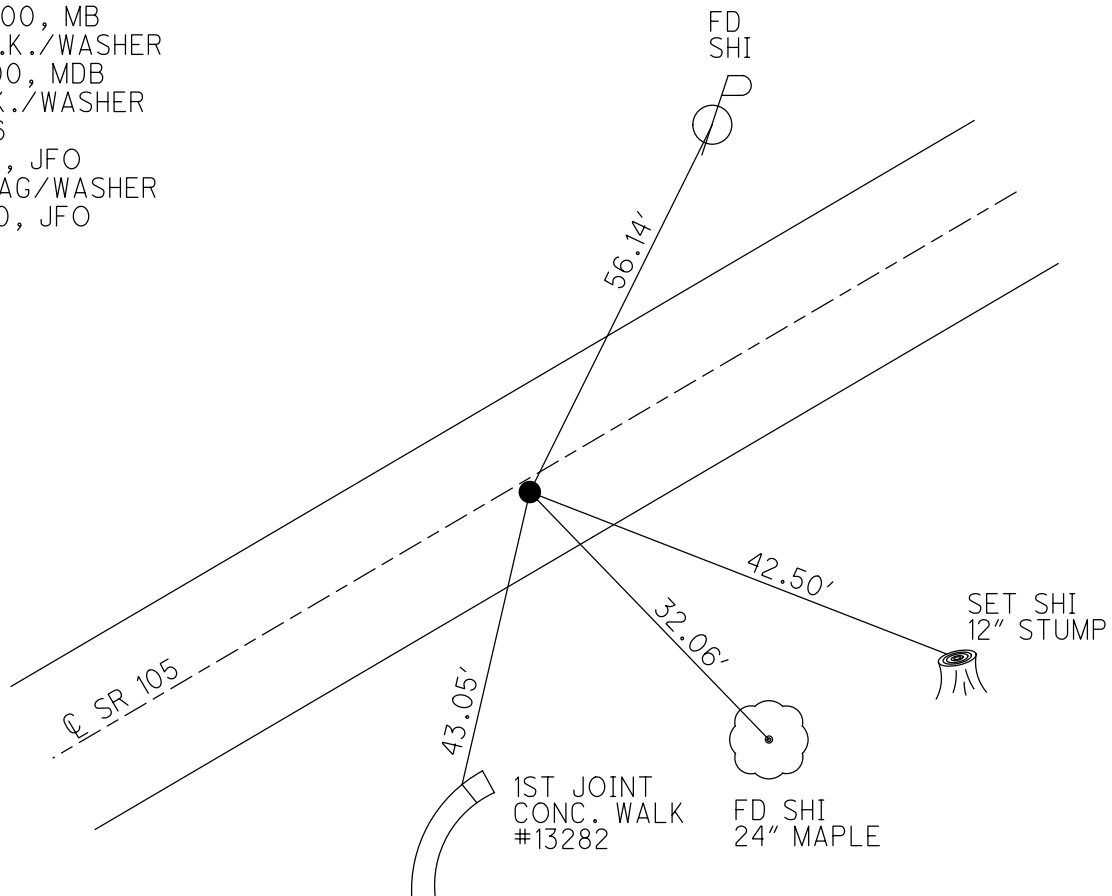
GRID: NORTHING: 668616.112

EASTING: 1779814.561



RECORD:

- FD P.K./WASHER
- 4/24/00, MB
- SET P.K./WASHER
- 6-13-00, MDB
- FD P.K./WASHER
- REF106
- 5-8-18, JFO
- SET MAG/WASHER
- 4-8-20, JFO



O.D.O.T. DISTRICT 2 SURVEY OFFICE

PERSONNEL

REFERENCE NO. 106

SHEET 73 OF 96

NOTES M. BARNHISEL

H.C. M. CAUTERBURY

R.C. M. BARNHISEL

Drawn By: K. MOSEK

DATE 4-24-00

WEATHER Sunny

TEMP. +6.0°F

ROUTE S.R. 105

COUNTY OTTAWA

TOWNSHIP HARRIS

SECTION 12

T6 N R14 E

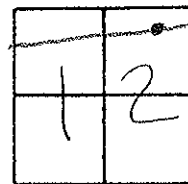
TYPE MONUMENT PK WASHER

ON SURFACE - ~~BELOW~~ SURFACE

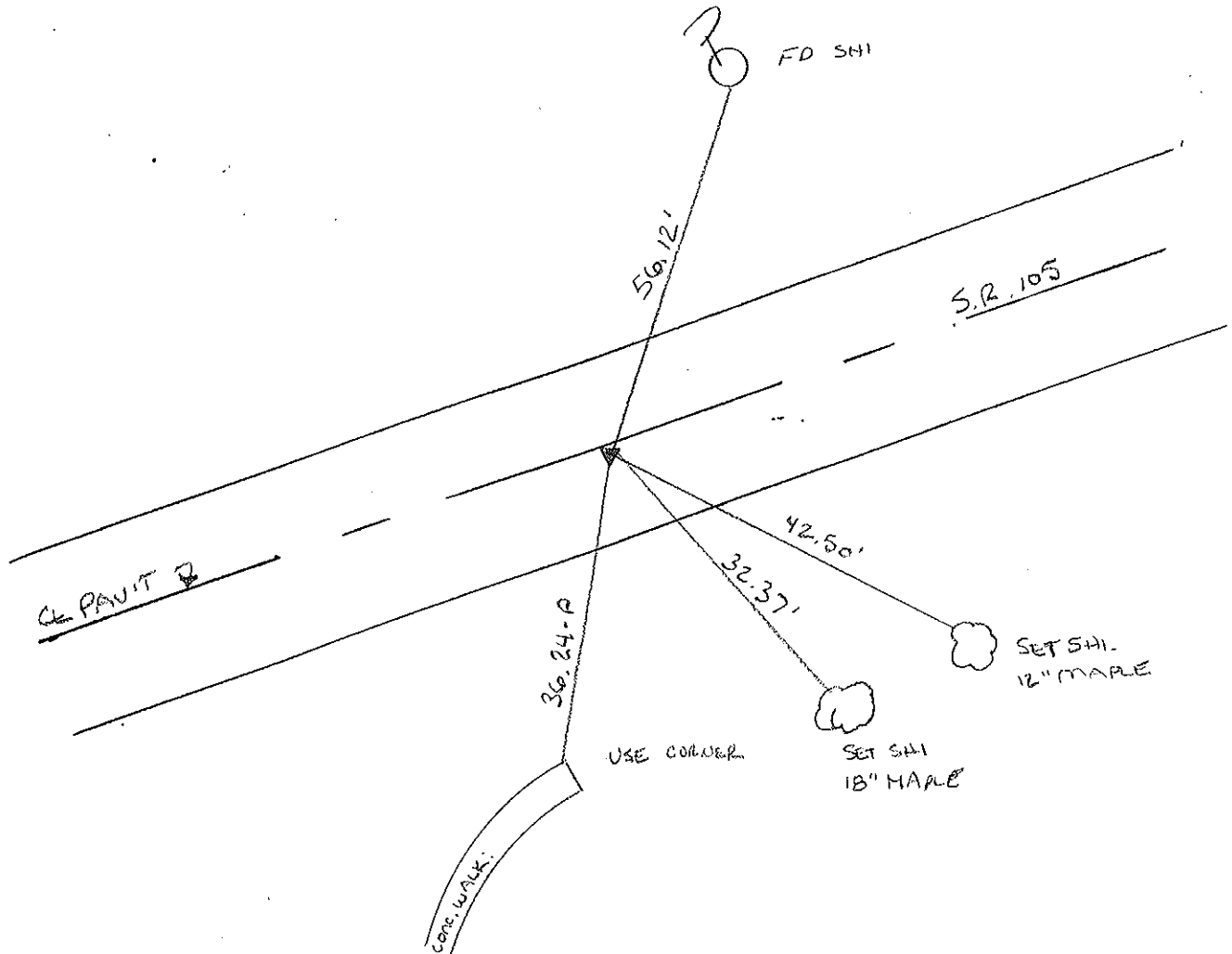
~~LEFT~~ C PAV'T. - RIGHT 0.8' RT

9.4' TO RT EDGE PAVEMENT

S.L.M. 460 + 86



RESET PK WASHER
 6-13-00
 MDB



O.D.O.T. DISTRICT 2 SURVEY OFFICE

PERSONNEL

REFERENCE NO. 106

SHEET OF

NOTES Cronin

DRAW 6/06/88

H.C. Ripple

DATE 8/20/87

ROUTE #105

R.C. Barbour

WEATHER sunny

COUNTY Ottawa

Geyman

TEMP. 79°

TOWNSHIP Harris

SECTION 12

T. 6 N. 14 E.

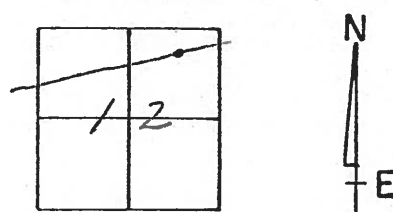
TYPE MONUMENT P.K. & washer

ON SURFACE - BELOW

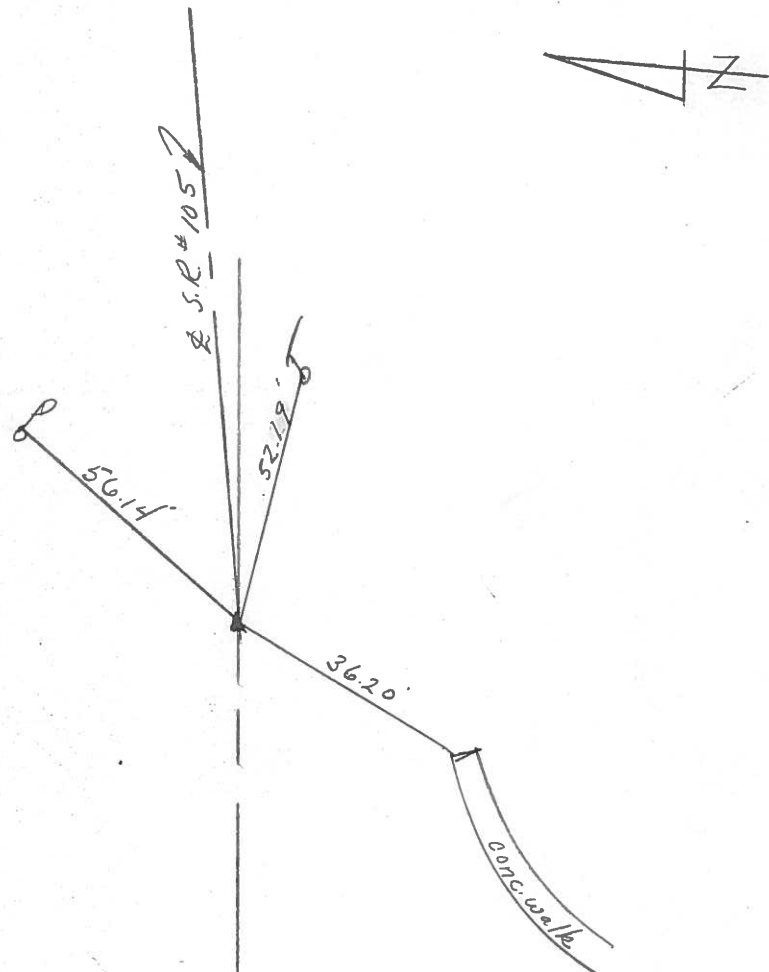
LEFT - PAV'T. - RIGHT 1

 TO EDGE PAVEMENT

S.L.M. 459+93



boat spike atop P.R.
spike below P.K. & washer



PERSONNEL TITLE PERSONNEL TITLE

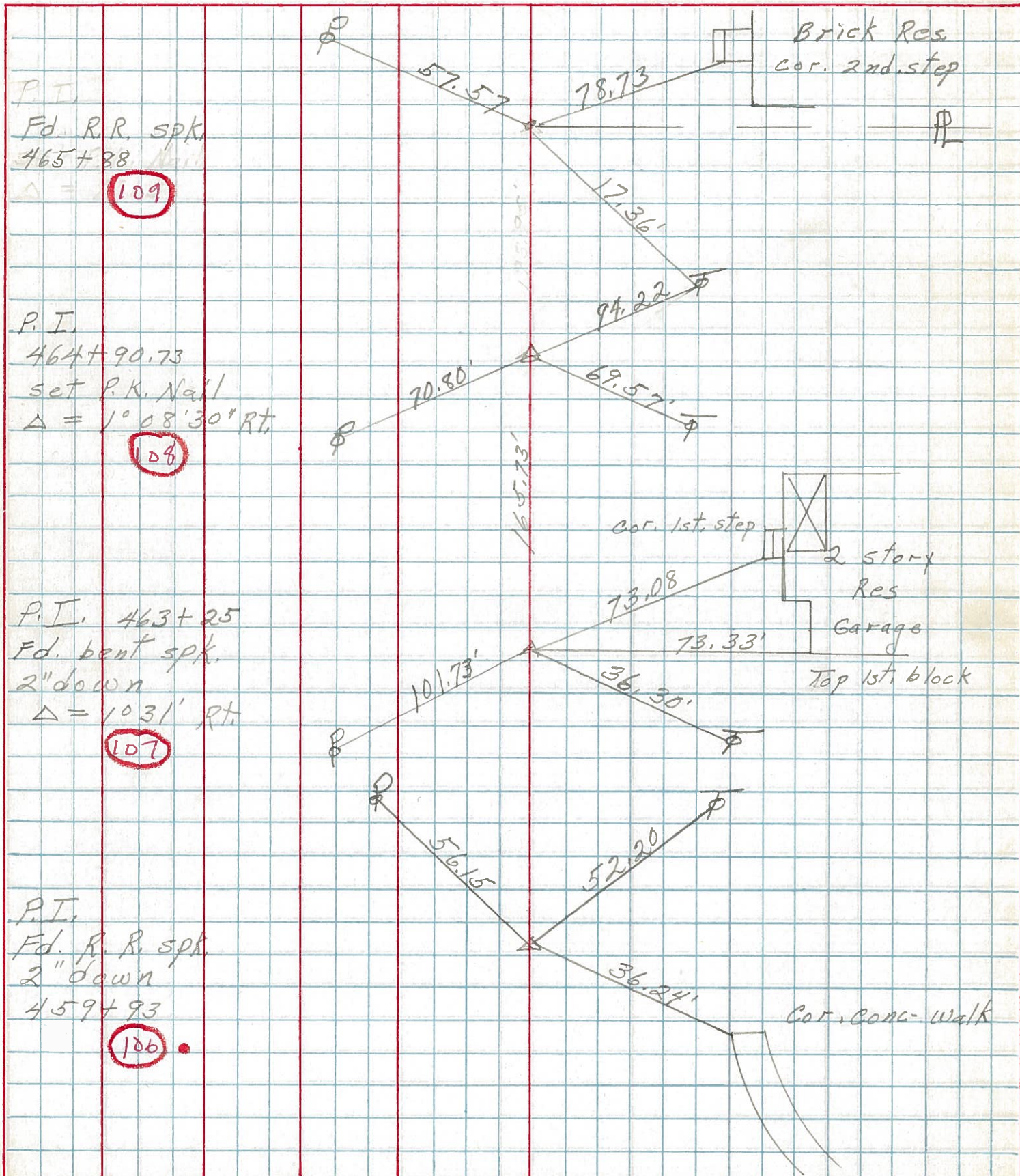
COUNTY Ottawa DATE 5-21-74

S. R. 105 WEATHER Fair

SEC. 12 TEMP. 75°

DESCRIPTION Harris Twp.

JOB NO.



P.I.
 Fd. R.R. spk
 465+88
 $\Delta = 109$

P.I.
 464+90.73
 set P.K. Nail
 $\Delta = 1^{\circ}08'30''$ RT
 $\Delta = 108$

P.I. 463+25
 Fd. bent spk.
 2" down
 $\Delta = 1031'$ RT
 $\Delta = 107$

P.I.
 Fd. R. R. spk
 2" down
 459+93
 $\Delta = 106$

Brick Res
 cor. 2nd. step

cor. 1st. step
 2 story
 Res
 Garage
 Top 1st. block

Cor. Cong. Walk