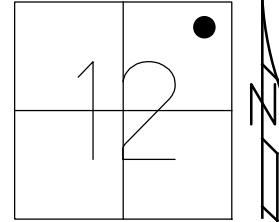


O.D.O.T. DISTRICT 2 SURVEY OFFICE (USE ONLY)

PERSONNEL \_\_\_\_\_ REFERENCE NO. 108 SHEET 19 OF 42  
 NOTES RHOADES DATE 8-1-2019 ROUTE SR 105  
 H.C. O'DONNELL WEATHER SUNNY COUNTY OTTAWA  
 R.C. MILLER TEMP. 78°F TOWNSHIP HARRIS  
 DWG BY AUBLE PID 92131 SECTION 12  
 T 6 N R 14 E

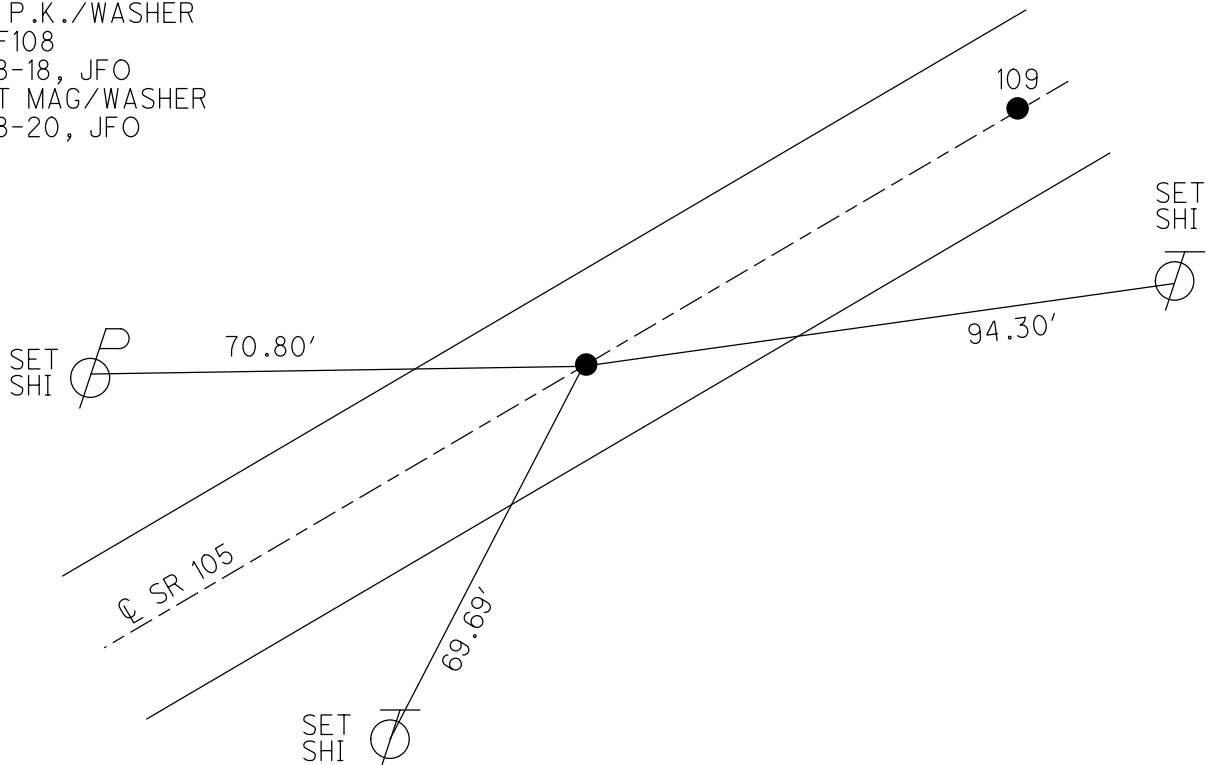
TYPE MONUMENT P.K./WASHER  
 ON SURFACE - ~~BELOW~~ ON  
 OFFSET  $\odot$  PAVEMENT ON LT : RT  
10.0' TO LT EDGE PAVEMENT  
 STATION: 464+65.95



HORIZ.DATUM: NAD83 (2011) GEOID: 2012A  
 GRID: NORTHING: 668719.171 EASTING: 1780300.945

RECORD: PI  
 $\Delta = 01^\circ 08' 30''$  RT  
 P.K./WASHER  
 4/24/00, MB  
 SET P.K./WASHER  
 6-13-00, MDB  
 FD P.K./WASHER  
 REF108  
 5-8-18, JFO  
 SET MAG/WASHER  
 4-8-20, JFO

DIST.108-109= 97.05'



# O.D.O.T. DISTRICT 2 SURVEY OFFICE

PERSONNEL

REFERENCE NO. 108

SHEET 75 OF 96

NOTES M. BARNHISEL

H.C. M. CAUTERBURY

R.C. M. BARNHISEL

DRAWN BY: K. MOSER

DATE 4-24-00

WEATHER Sunny

TEMP. +6.00F

ROUTE S.R. 105

COUNTY OTTAWA

TOWNSHIP HARRIS

SECTION 12

T6 N R14 E

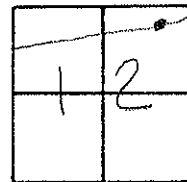
TYPE MONUMENT PK/WASHER

ON SURFACE - BELOW SURFACE

LEFT - ℄ PAV'T. - RIGHT ℄ PAV'T.

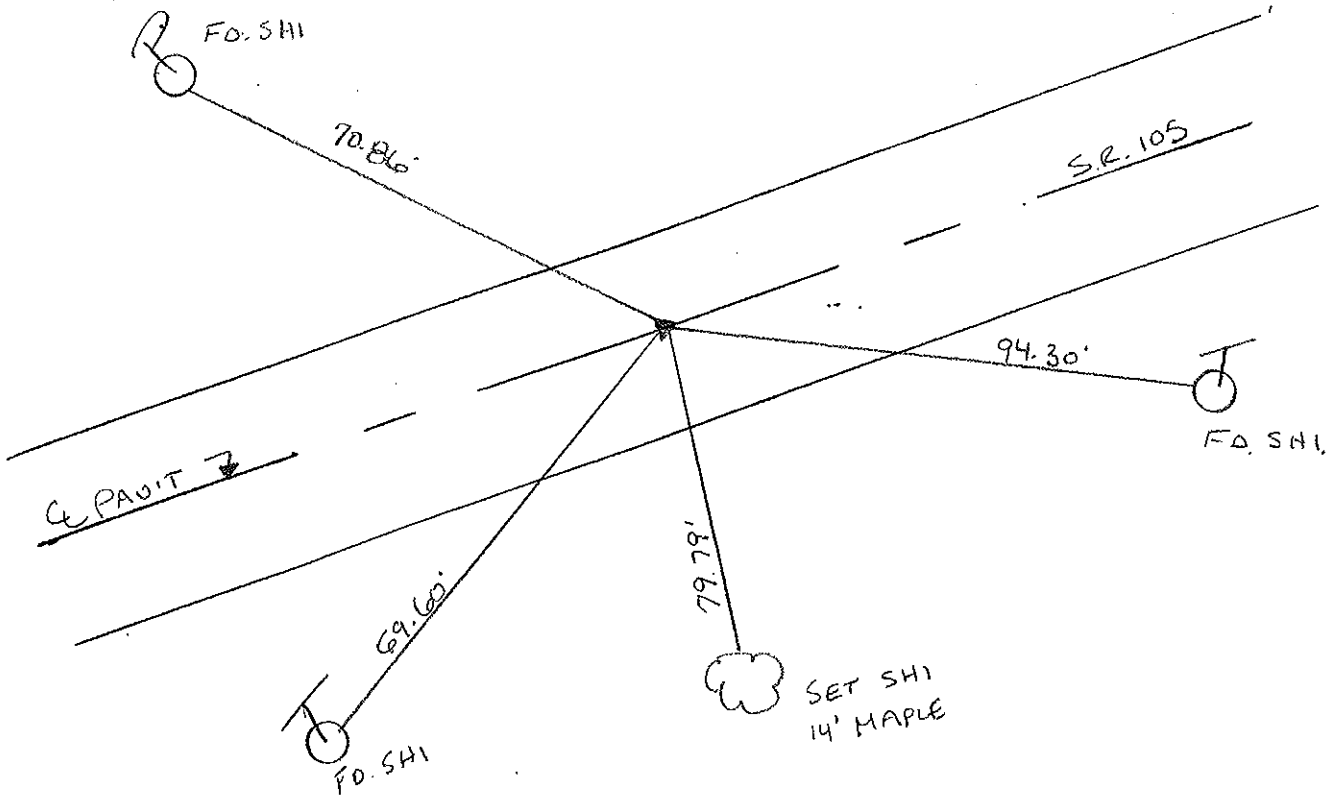
10.0' TO LT EDGE PAVEMENT

S.L.M. 465 + 84



RECORD: PI Δ = 01°-08'-30" RT.

RESET PK/WASHER  
6-13-00  
KPM



# O.D.O.T. DISTRICT 2 SURVEY OFFICE

PERSONNEL

REFERENCE NO. 108

SHEET      OF     

NOTES Cronin

Drawn 6/06/88

H.C. Ripple

DATE 8/20/87

ROUTE #105

R.C. Barbour

WEATHER sunny

COUNTY Ottawa

Geyman

TEMP. 79°

TOWNSHIP Harris

SECTION 12

T 6 N R 14 E

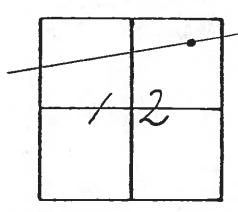
TYPE MONUMENT P.K. & washer

ON SURFACE - BELOW     

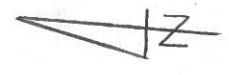
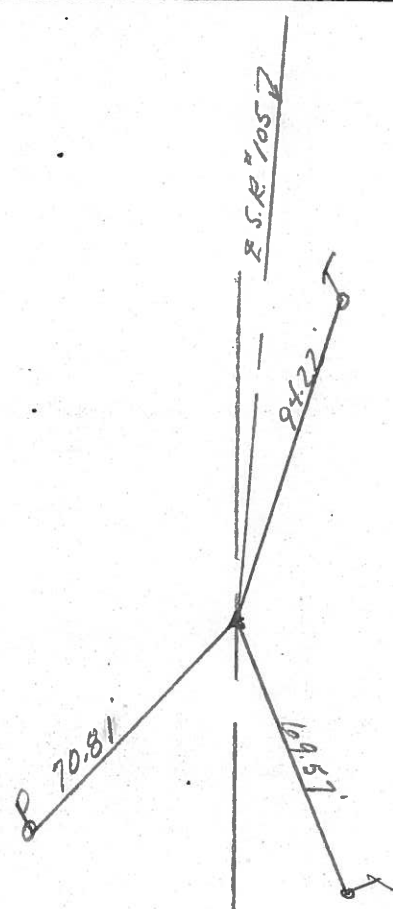
LEFT -      PAV T. - RIGHT     

     TO      EDGE PAVEMENT

S.L.M. 464 + 90.73



$\Delta = 01^{\circ}08'30''$  Rt.  
P.K. at top P.K. below  
P.K. & washer



PERSONNEL TITLE PERSONNEL TITLE

COUNTY Ottawa DATE 5-21-74

S. R. 105 WEATHER Fair

SEC. 12 TEMP 75°

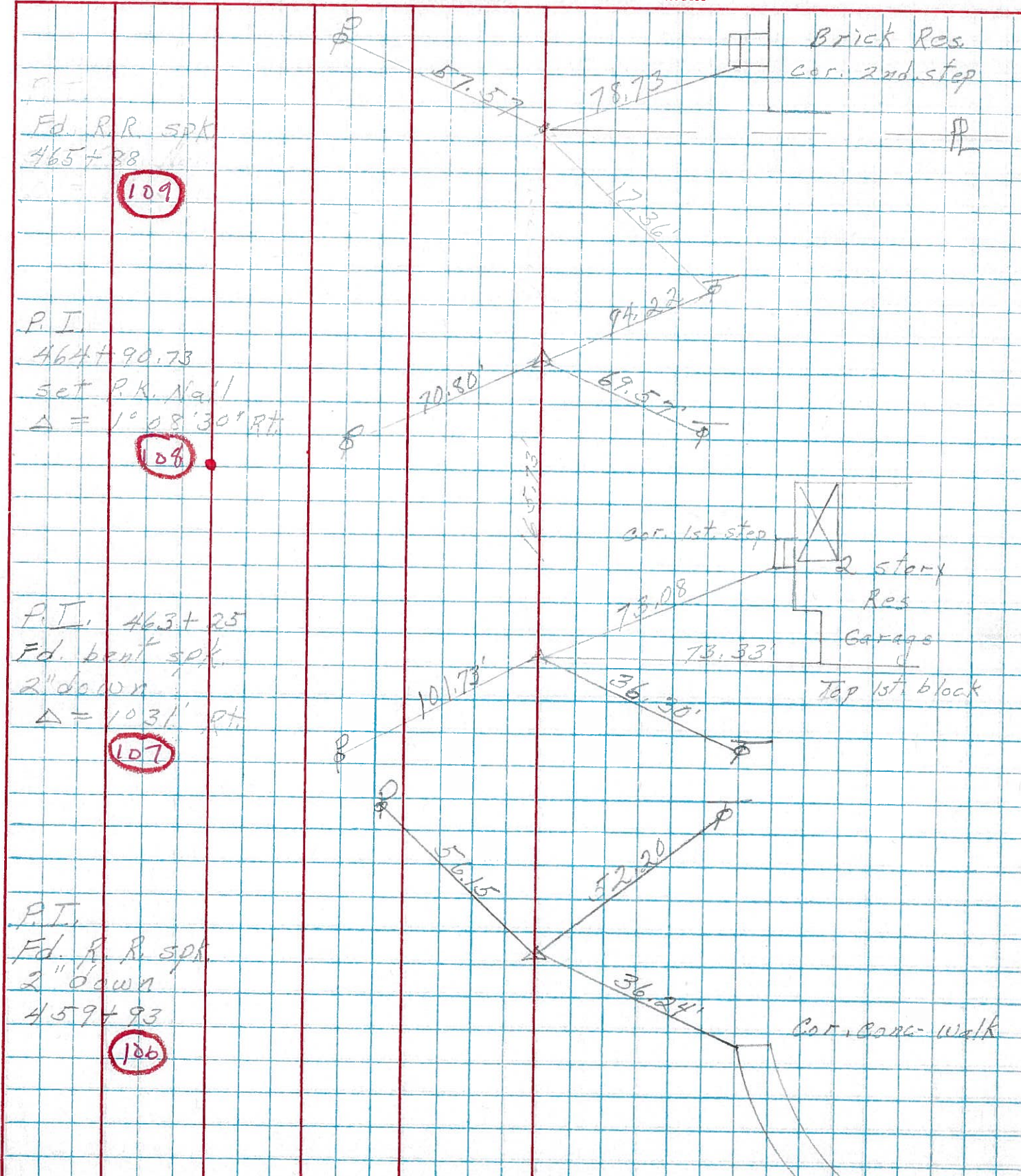
DESCRIPTION Harris TWP.

JOB NO.

LEFT

CENTER LINE

RIGHT



Fd. R.R. spk  
465+38

109

P.I.  
464+90.73  
set P.K. Nail  
 $\Delta = 1^{\circ} 08' 30'' \text{ RT}$

108

P.I. 463+25  
Fd. bent spk  
2" down  
 $\Delta = 103.1' \text{ RT}$

107

P.I.  
Fd. R.R. spk  
2" down  
459+93

106

Brick Res.  
cor. 2nd. step

cor. 1st. step

2 story  
Res

Garage

Top 1st. block

Cor. Garage-walk