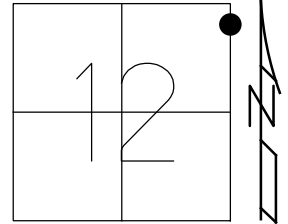


O.D.O.T. DISTRICT 2 SURVEY OFFICE (USE ONLY)

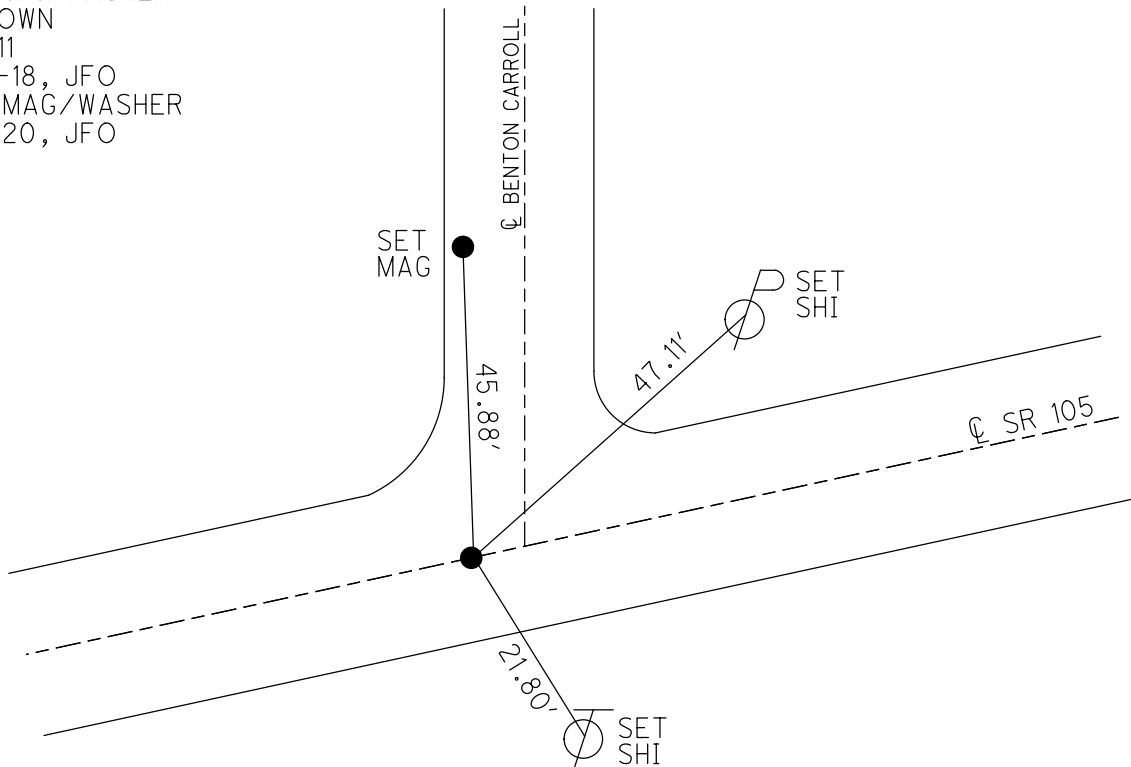
PERSONNEL _____ REFERENCE NO. 112 SHEET 23 OF 42
 NOTES RHOADES DATE 8-5-2019 ROUTE SR 105
 H.C. O'DONNELL WEATHER SUNNY COUNTY OTTAWA
 R.C. MILLER TEMP. 74°F TOWNSHIP HARRIS
 DWG BY AUBLE PID 92131 SECTION 12
 T 6 N R 14 E

TYPE MONUMENT P.K./WASHER
~~ON SURFACE~~ - BELOW 4"
 OFFSET \perp PAVEMENT 0.2' ~~RT~~ : RT
9.8' TO RT EDGE PAVEMENT
 STATION: 474+67.17



HORZ.DATUM: NAD83 (2011) GEOID: 2012A
 GRID: NORTHING: 668860.391 EASTING: 1781292.025

RECORD:
 FD P.K./WASHER
 4/25/00, MB
 SET P.K./WASHER
 6-13-00, KPM
 FD P.K./WASHER
 4" DOWN
 REF111
 5-16-18, JFO
 SET MAG/WASHER
 4-8-20, JFO



O.D.O.T. DISTRICT 2 SURVEY OFFICE

PERSONNEL

REFERENCE NO. 112

SHEET 79 OF 96

NOTES K. Moser

H.C. M. Canterbury

DATE 4-25-00

ROUTE S.R. 6

R.C. M. Garoniel

WEATHER Sunny/Breezy

COUNTY OTTAWA

TEMP. +60°F

TOWNSHIP HARRIS

SECTION 12

T 6 N R 14 E

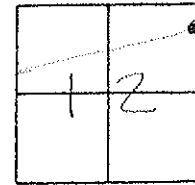
TYPE MONUMENT PK / WASHER

ON SURFACE - BELOW SURFACE

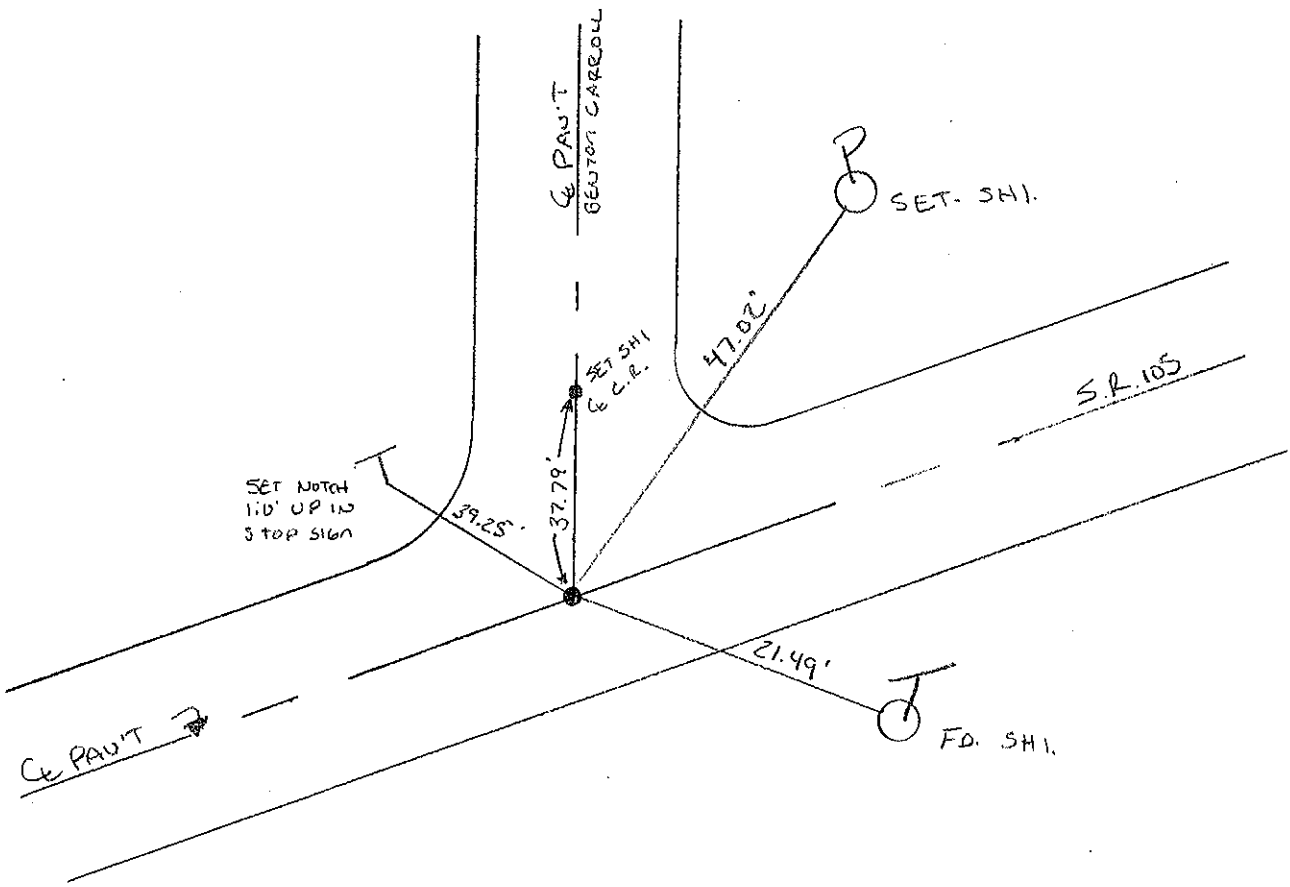
LEFT - C. PAV'T. - RIGHT 0.2'

9.8' TO RT. EDGE PAVEMENT

S.L.M. 475+78



RESET PK/WASHER
 6-13-00
 K.P.M.



O.D.O.T. DISTRICT 2 SURVEY OFFICE

PERSONNEL

REFERENCE NO. 112

SHEET OF

NOTES Cronin

DRAWN 6/06/88

H.C. Ripple

DATE 8/20/87

ROUTE #105

R.C. Barbour

WEATHER sunny

COUNTY Ottawa

Geyman

TEMP. 82°

TOWNSHIP Harris

SECTION 12

T 6 N R 14 E

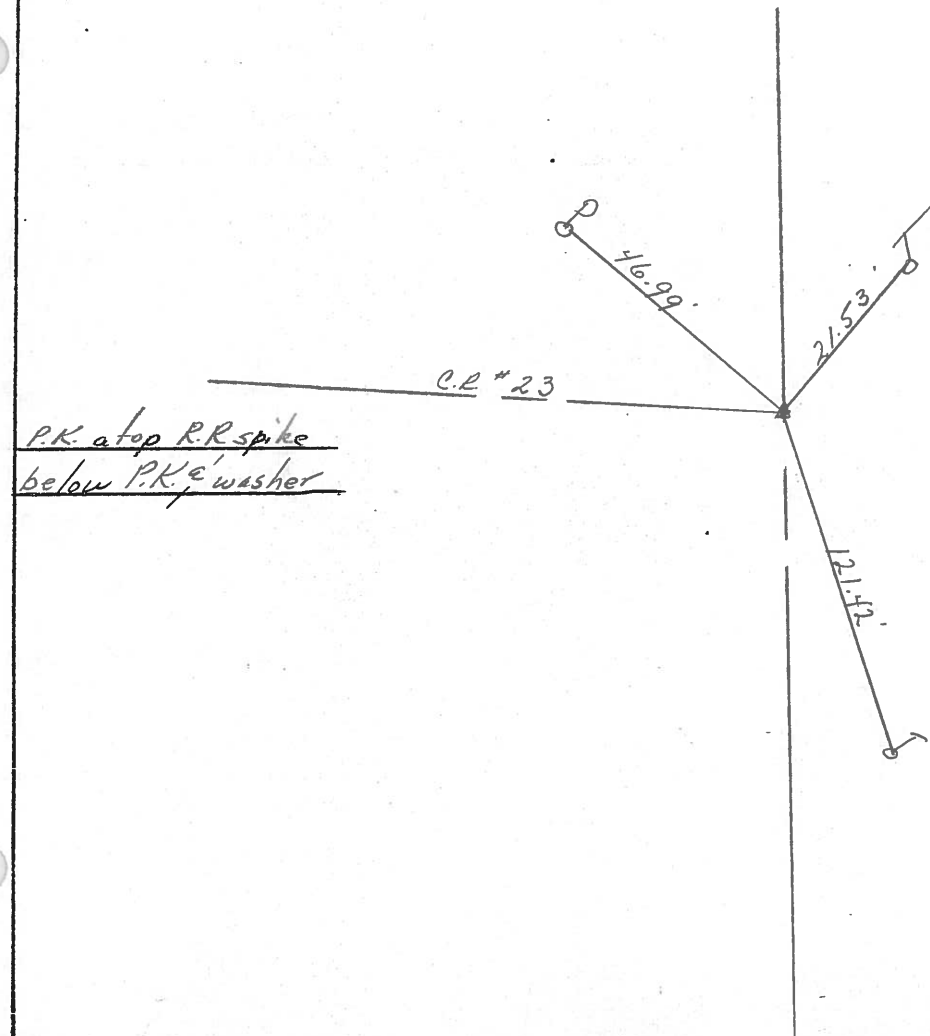
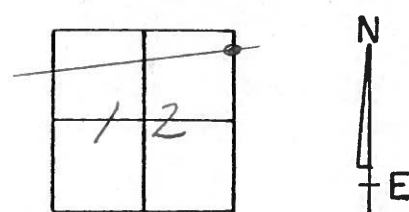
TYPE MONUMENT P.K. & washer

ON SURFACE - BELOW

LEFT - PAV'T. - RIGHT

 TO EDGE PAVEMENT

S.L.M. 474+92±



PERSONNEL	TITLE	PERSONNEL	TITLE	COUNTY	DATE
<u>Schneider</u>		<u>Ash</u>		<u>Ottawa</u>	<u>5-21-74</u>
<u>Mosser</u>		<u>Cronell</u>		S. R. <u>105</u>	WEATHER <u>Fair</u>
<u>Barbour</u>		<u>Ripple</u>		SEC. <u>12</u>	TEMP <u>75°</u>
		<u>Geyman</u>			

DESCRIPTION Harris Twp. JOB NO. _____

