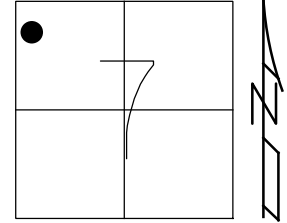


O.D.O.T. DISTRICT 2 SURVEY OFFICE (USE ONLY)

PERSONNEL	REFERENCE NO. <u>113</u>	SHEET <u>24</u> OF <u>42</u>
NOTES <u>RHOADES</u>	DATE <u>5-16-18</u>	ROUTE <u>SR 105</u>
H.C. <u>O'DONNELL</u>	WEATHER <u>FAIR</u>	COUNTY <u>OTTAWA</u>
R.C. <u>TRENKA</u>	TEMP. <u>66°F</u>	TOWNSHIP <u>SALEM</u>
		SECTION <u>7</u>
DWG BY <u>AUBLE</u>	PID <u>92131</u>	T <u>6</u> N R <u>14</u> E

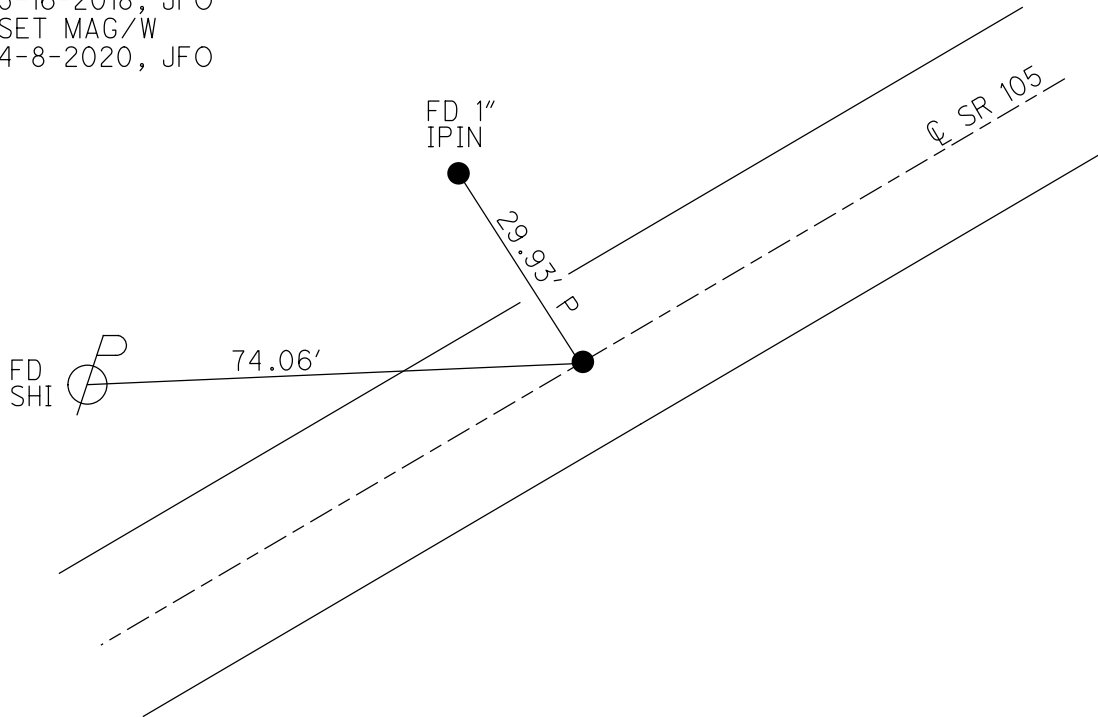
TYPE MONUMENT P.K.SHANK  
~~ON SURFACE~~ - BELOW 5"  
 OFFSET  $\varnothing$  PAVEMENT ON LT : RT  
10.2' TO RT EDGE PAVEMENT  
 STATION: 480+03.22



HORZ.DATUM: NAD83 (2011)      GEOID: 2012A  
 GRID: NORTHING: 668927.872      EASTING: 1781823.809

RECORD:  
 RESET PK/W  
 6-13-2000, KPM  
 FD PK SHANK  
 5" DOWN  
 REF113  
 5-16-2018, JFO  
 SET MAG/W  
 4-8-2020, JFO

DIST .113-114= 125.11'



O.D.O.T. DISTRICT 2 SURVEY OFFICE

PERSONNEL

REFERENCE NO. 113

SHEET 80 OF 96

NOTES K. MOSER

H.C. M. CANTERBURY

R.C. M. BALNHISEL

DATE 4-26-00

WEATHER SUNNY

TEMP. +60°F

ROUTE SR 105

COUNTY OTTAWA

TOWNSHIP SALEM

SECTION 7

T6 N R 14 E

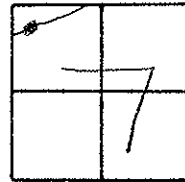
TYPE MONUMENT PK / WASHER

ON SURFACE - ~~BELOW~~ SURFACE

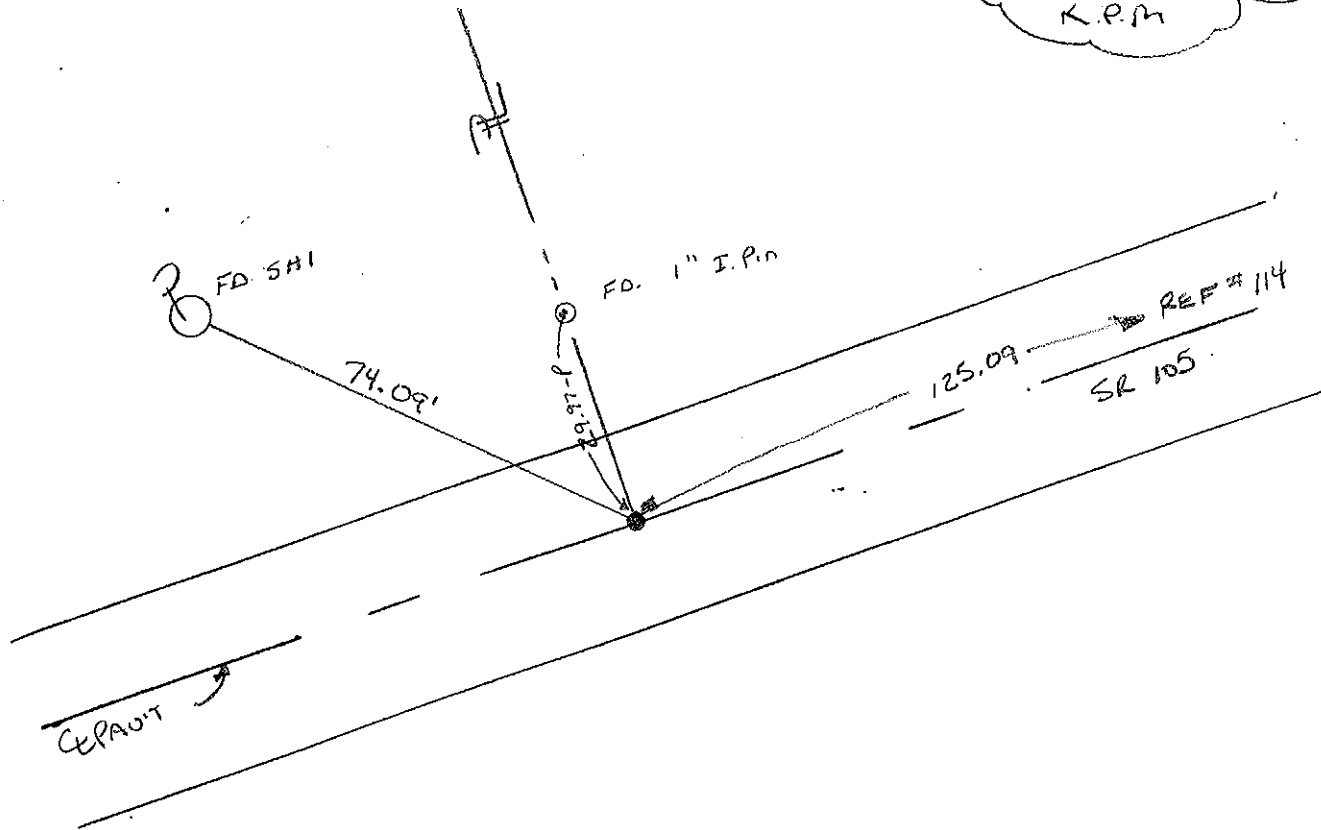
~~LEFT~~ - PAV'T. - ~~RIGHT~~ PAV'T.

10.2 TO RT. EDGE PAVEMENT

S.L.M. 481+24



RESET PK / WASHER  
6-13-00  
K.P.M



PERSONNEL	TITLE	PERSONNEL	TITLE	COUNTY	DATE
SCHNEIDER		ASH		OTTAWA	5-21-74
MOSSE		CRONIN		S. R. 105	WEATHER
BABROW		RIPPLE		SEC. 12	TEMP.
		GEYMAN			

DESCRIPTION \_\_\_\_\_ JOB NO. \_\_\_\_\_

