

O.D.O.T. DISTRICT 2 SURVEY OFFICE (USE ONLY)

PERSONNEL

REFERENCE NO. 116

SHEET 28 OF 42

NOTES RHOADES

DATE 8-5-19

ROUTE SR 105

H.C. O'DONNELL

WEATHER SUNNY

COUNTY OTTAWA

R.C. MILLER

TEMP. 74°F

TOWNSHIP SALEM

SECTION 6

DWG BY MAHLER PID 92131

T 6 N R 14 E

TYPE MONUMENT P.K./WASHER

ON SURFACE - ~~BELOW~~ ON

OFFSET ☉ PAVEMENT 0.3' ~~ET~~ : RT

9.9' TO RT EDGE PAVEMENT

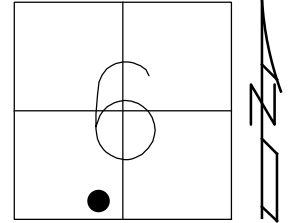
STATION: 497+26.70

HORZ. DATUM: NAD83 (2011)

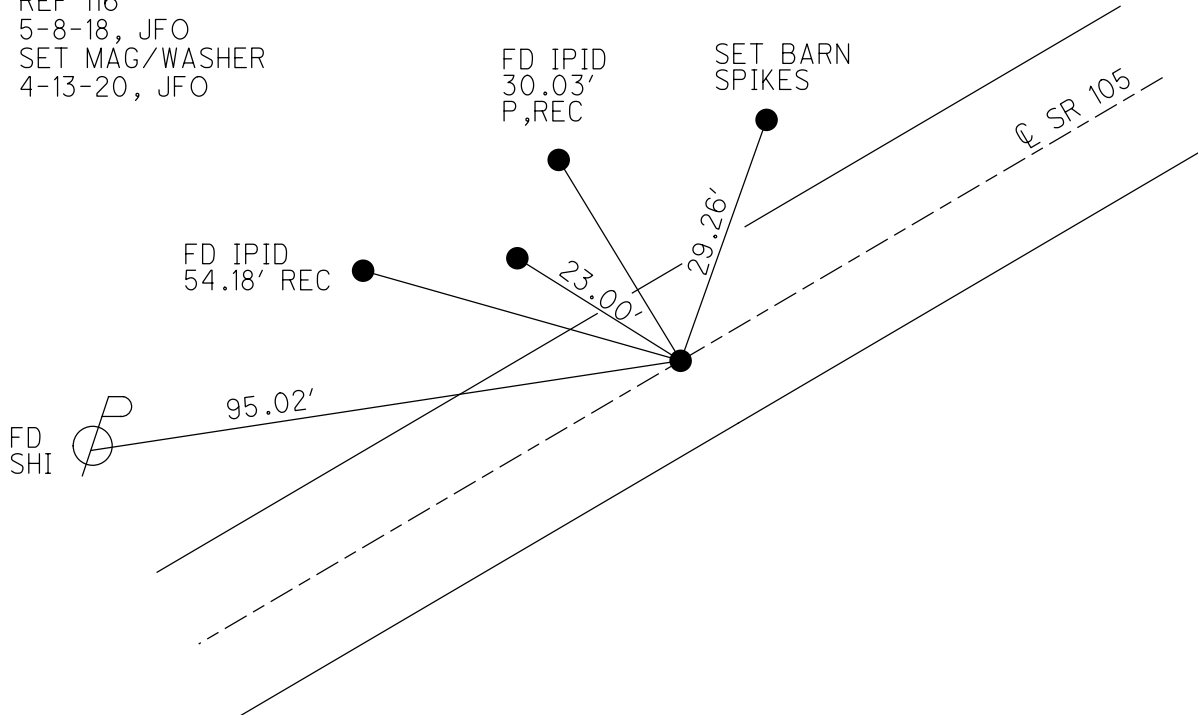
GEOID: 2012A

GRID: NORTHING: 669244.479

EASTING: 1783508.428



RECORD:  
 FD P.K./WASHER  
 4/26/00, MB  
 SET P.K./WASHER  
 6-13-00, KPM  
 FD P.K./WASHER  
 REF 116  
 5-8-18, JFO  
 SET MAG/WASHER  
 4-13-20, JFO



O.D.O.T. DISTRICT 2 SURVEY OFFICE

PERSONNEL

REFERENCE NO. 116

SHEET 85 OF 96

NOTES K. MOSER

H.C. M. CARTELBURY

R.C. M. BARNHISEL

DATE 4-26-00

WEATHER SUNNY

TEMP. +60°F

ROUTE S.R. 105

COUNTY OTTAWA

TOWNSHIP SALEM

SECTION 6

T6 N R 14 E

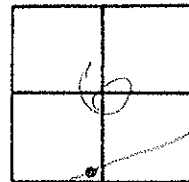
TYPE MONUMENT PK WASHER

ON SURFACE - ~~BELOW~~ SURFACE

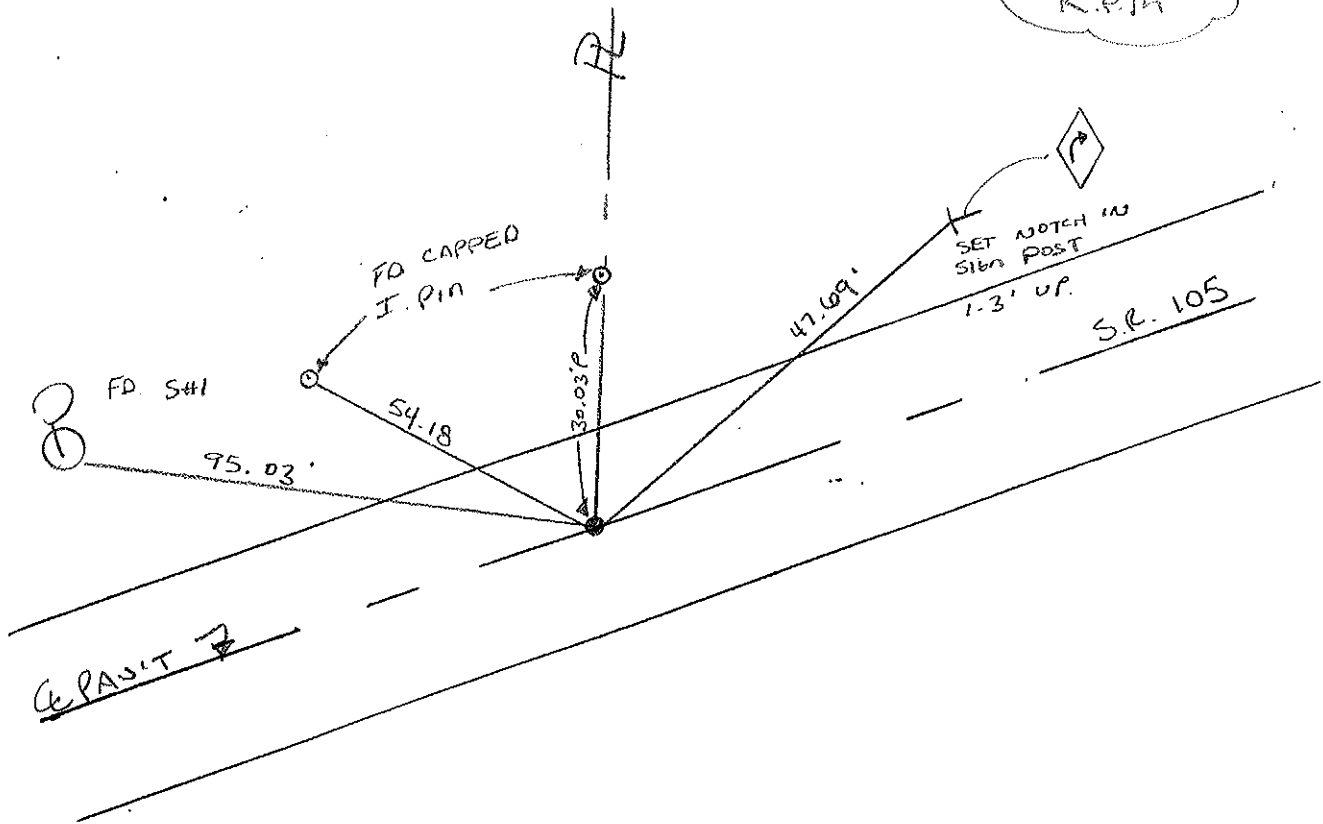
~~LEFT - C. PAV'T.~~ - RIGHT 0.3' RT.

9.9 TO RT. EDGE PAVEMENT

S.L.M. 498+51



RESET PK WASHER  
6-13-00  
K.P.M.



# O.D.O.T. DISTRICT 2 SURVEY OFFICE

PERSONNEL

REFERENCE NO. 116

SHEET      OF     

NOTES Cronin

DRAWN 6/06/88

H.C. Ripple

DATE 8/20/87

ROUTE # 105

R.C. Barbour

WEATHER sunny

COUNTY Ottawa

Geyman

TEMP. 84°

TOWNSHIP Salem

SECTION 6

T 6 N R 14 E

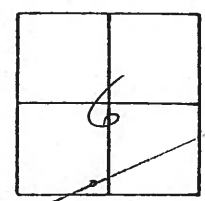
TYPE MONUMENT P.K. & washer

ON SURFACE - BELOW     

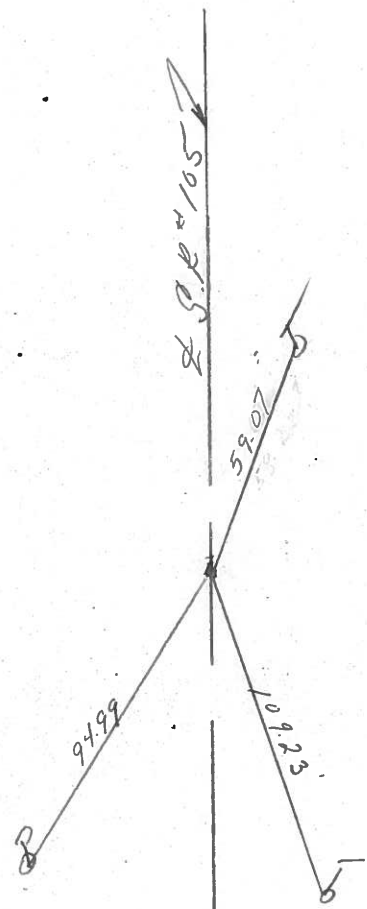
LEFT -      PAV'T. - RIGHT     

     TO      EDGE PAVEMENT

S.L.M. 497+52



P.K. atop P.K. below  
P.K. & washer



PERSONNEL	TITLE	PERSONNEL	TITLE	COUNTY	DATE
schneider				Ottawa	
Mosser				S. R. 105	WEATHER Cloudy
Barbour				SEC.	TEMP. 76°
Rippel					

DESCRIPTION Salem Twp. JOB NO. \_\_\_\_\_

