

O.D.O.T. DISTRICT 2 SURVEY OFFICE (USE ONLY)

PERSONNEL

REFERENCE NO. 117

SHEET 29 OF 42

NOTES RHOADES

DATE 8-5-19

ROUTE SR 105

H.C. O'DONNELL

WEATHER SUNNY

COUNTY OTTAWA

R.C. MILLER

TEMP. 74°F

TOWNSHIP SALEM

SECTION 6

DWG BY MAHLER PID 92131

T 6 N R 14 E

TYPE MONUMENT P.K./WASHER

ON SURFACE - ~~BELOW~~ ON

OFFSET ☉ PAVEMENT ON LT : RT

10.4' TO LT EDGE PAVEMENT

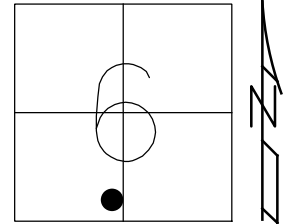
STATION: 499+92.34

HORZ. DATUM: NAD83 (2011)

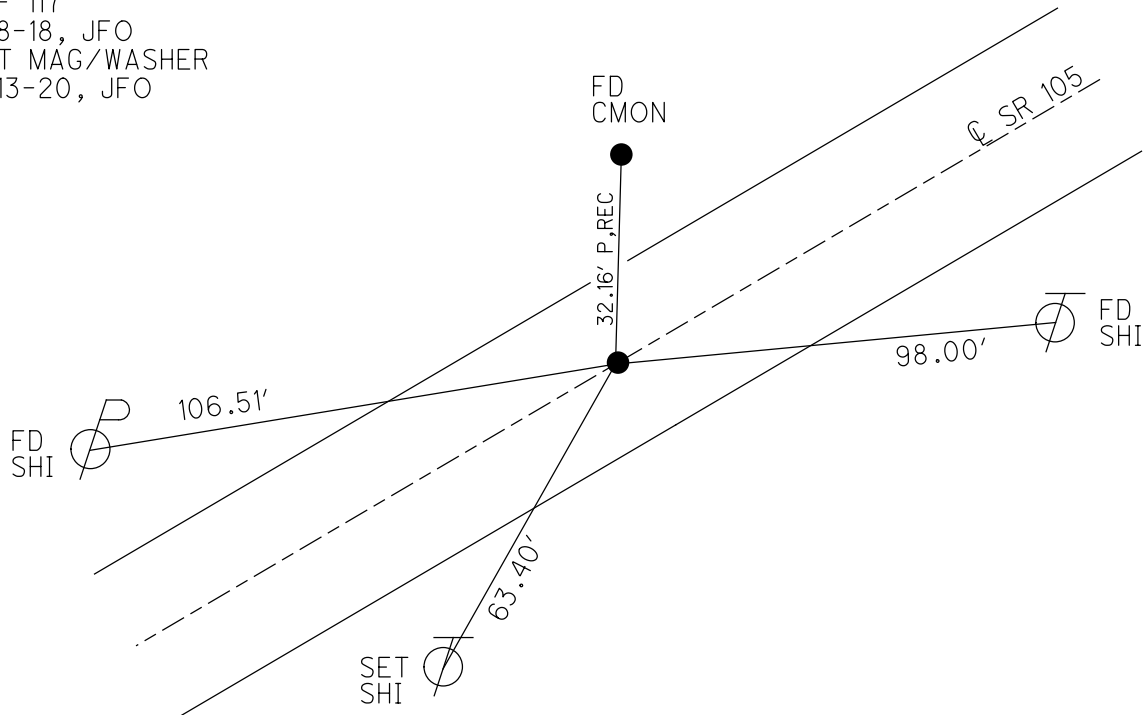
GEOID: 2012A

GRID: NORTHING: 669343.916

EASTING: 1783754.754



RECORD:
 FD P.K./WASHER
 4/26/00, MB
 SET P.K./WASHER
 6-13-00, KPM
 FD P.K.NAIL
 REF 117
 5-8-18, JFO
 SET MAG/WASHER
 4-13-20, JFO



O.D.O.T. DISTRICT 2 SURVEY OFFICE

PERSONNEL

REFERENCE NO. 117

SHEET 80 OF 96

NOTES K. Moser

H.C. M. CAUTELBURY

R.C. M. BARNHISEL

DATE 4-26-00

WEATHER SUNNY

TEMP. +60°F

ROUTE S.R. 105

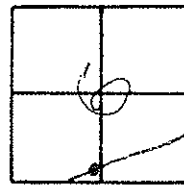
COUNTY OTTAWA

TOWNSHIP SALEM

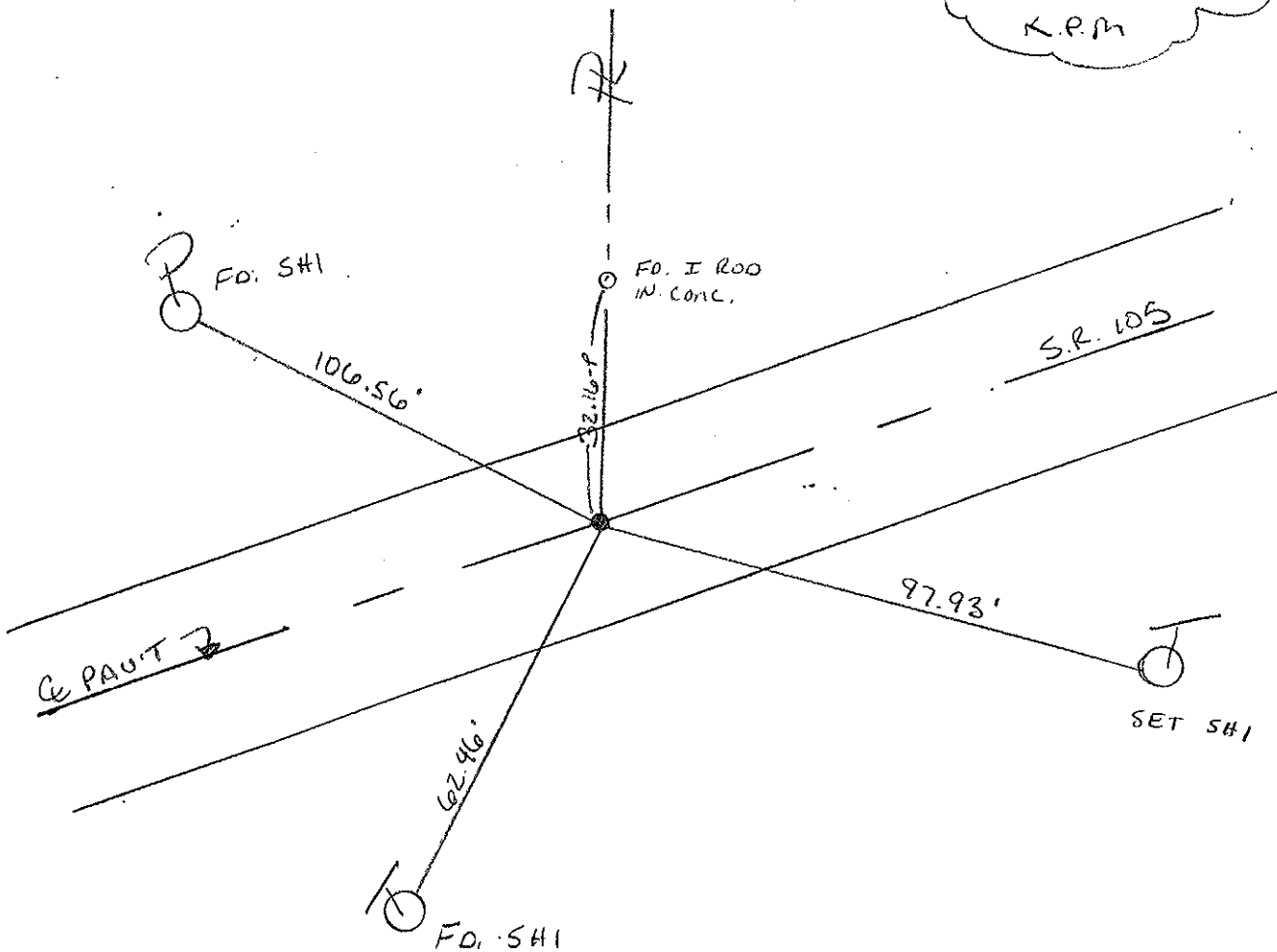
SECTION 6

T 6 N R 14 E

TYPE MONUMENT PK / WASHER
 ON SURFACE - ~~BELOW~~ SURFACE
~~LEFT - & PAV'T. - RIGHT~~ & PAV'T
 10.4 TO LT. EDGE PAVEMENT
 S.L.M. 501718



RESET PK / WASHER
 6-13-00
 K.P.M



O.D.O.T. DISTRICT 2 SURVEY OFFICE

PERSONNEL _____ REFERENCE NO. 117 SHEET _____ OF _____

NOTES Cronin DRAWN 6/06/88

H.C. Ripple DATE 8/20/87 ROUTE #105

R.C. Barbour WEATHER _____ COUNTY Ottawa

Geyman TEMP. _____ TOWNSHIP Salem

SECTION 6

T 6 N 17 E

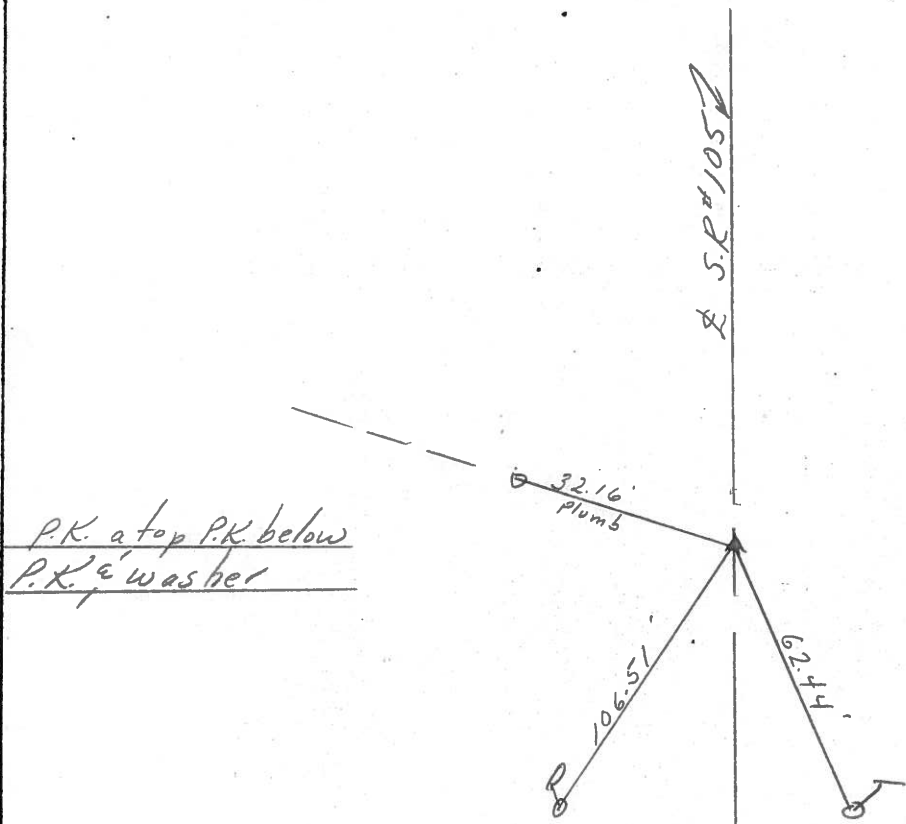
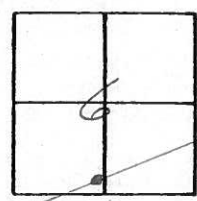
TYPE MONUMENT P.K. & washer

ON SURFACE - BELOW _____

LEFT - ☉ PAV'T. - RIGHT _____

TO _____ EDGE PAVEMENT

S.L.M. 500+17



PERSONNEL	TITLE	PERSONNEL	TITLE	COUNTY	DATE
Schneider				Ottawa	
Mosser				S. R. 105	WEATHER Cloudy
Barbour				SEC.	TEMP. 76°
Rippla					

DESCRIPTION Salem Twp. JOB NO. _____

