

O.D.O.T. DISTRICT 2 SURVEY OFFICE (USE ONLY)

PERSONNEL

REFERENCE NO. 121

SHEET 33 OF 42

NOTES RHOADES

DATE 8-5-2019

ROUTE SR 105

H.C. O'DONNELL

WEATHER SUNNY

COUNTY OTTAWA

R.C. MILLER

TEMP. 78°F

TOWNSHIP HARRIS

SECTION 6

DWG BY MAHLER PID 92131

T 6 N R 14 E

TYPE MONUMENT P.K./WASHER

ON SURFACE - ~~BELOW~~ ON

OFFSET 0.6' ~~RT~~ : RT

9.2' TO RT EDGE PAVEMENT

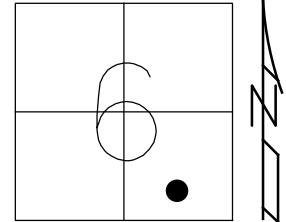
STATION: 522+93.4

HORIZ. DATUM: NAD83 (2011)

GEOID: 2012A

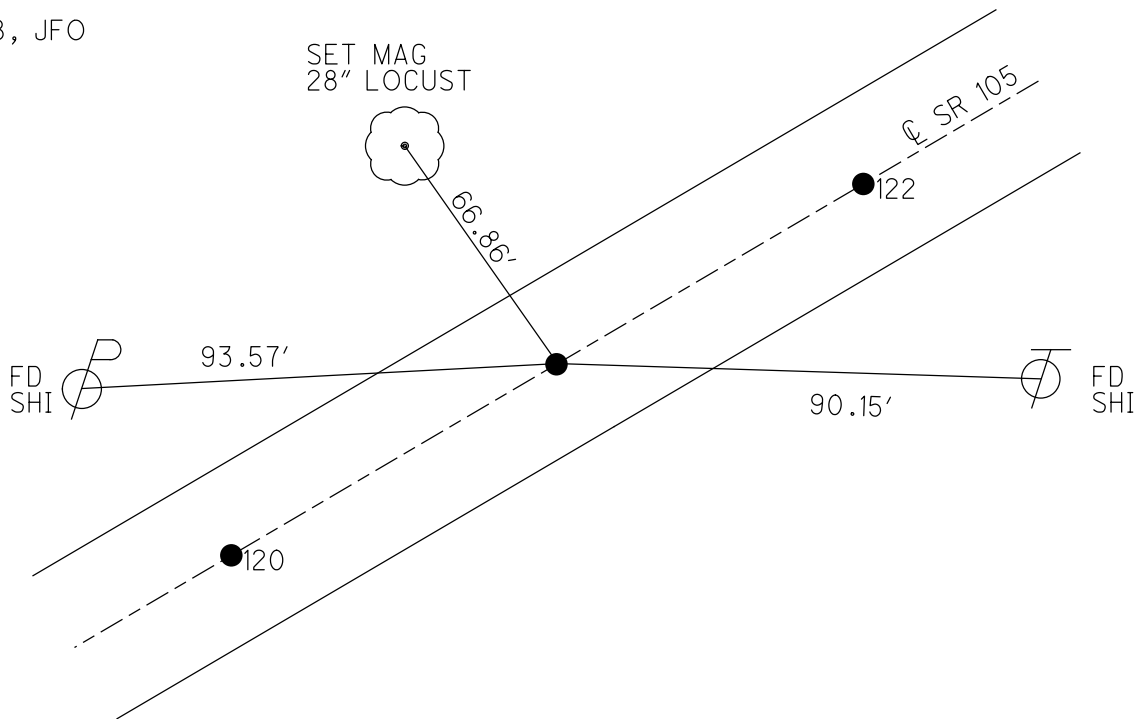
GRID: NORTHING: 670233.737

EASTING: 1785876.746



RECORD:
 FD P.K./WASHER
 4/26/00, MB
 SET P.K./WASHER
 6-13-00, KPM
 FD P.K./WASHER
 REF121
 5-9-18, JFO

DIST.
 120-121= 99.90'
 121-122= 100.04'



O.D.O.T. DISTRICT 2 SURVEY OFFICE

PERSONNEL

REFERENCE NO. 122

120, 121

SHEET 89 OF 96

NOTES K. Moser

H.C. M. CANTERBURY

DATE 4-26-00

ROUTE S.R. 105

R.C. M. BARNHISEL

WEATHER SUNNY

COUNTY OTTAWA

TEMP. +60°F

TOWNSHIP SALEM

SECTION 6

T6 N R 14 E

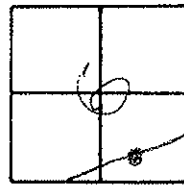
TYPE MONUMENT A-B-C = PK / WASHER

ON SURFACE - BELOW SURFACE

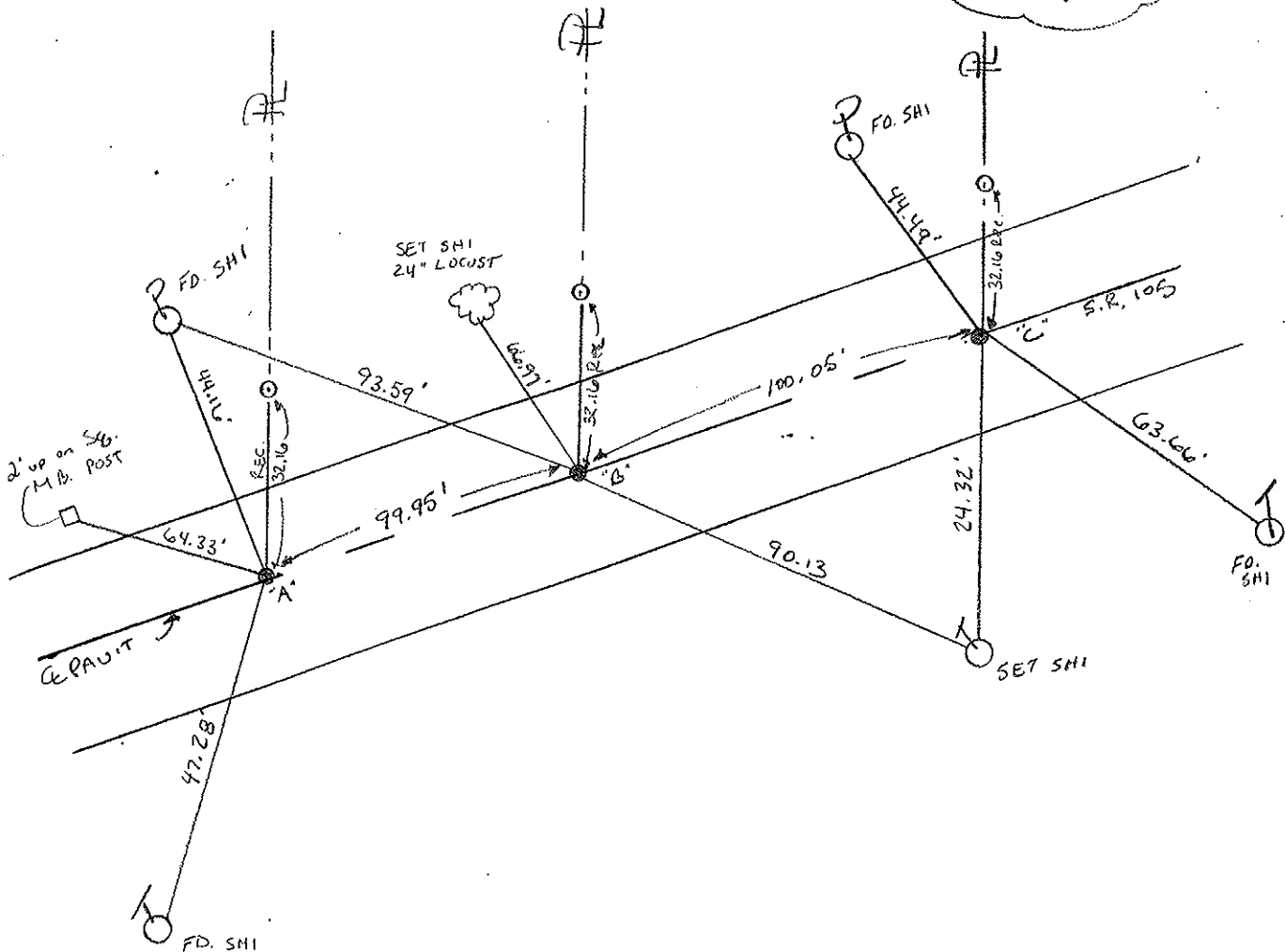
LEFT C PAV'T. - RIGHT A=0.5' RT B=0.6' RT C=0.1' RT

→ TO RT. EDGE PAVEMENT A=9.3 B=9.2 C=9.5'

S.L.M. A=523+24 B=524+24 C=525+24



RESET PK/WASHERS
6-13-00
K.P.M



PERSONNEL TITLE PERSONNEL TITLE

COUNTY Ottawa DATE 6-12-74

S. R. 105 WEATHER Fair

SEC. 6 TEMP. 70°

DESCRIPTION Salem Twp. LEFT CENTER LINE RIGHT JOB NO.



24+19
Fd. R.R. spk.
122

23+19
Fd. R.R. spk.
121

22+19
Fd. R.R. spk.
3" diam
120

P.I.
set P.K. Nail
510 + 57.5
119