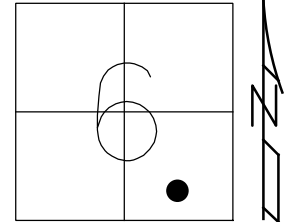


O.D.O.T. DISTRICT 2 SURVEY OFFICE (USE ONLY)

PERSONNEL _____ REFERENCE NO. 122 SHEET 34 OF 42
 NOTES RHOADES DATE 8-5-2019 ROUTE SR 105
 H.C. O'DONNELL WEATHER SUNNY COUNTY OTTAWA
 R.C. MILLER TEMP. 78°F TOWNSHIP HARRIS
 SECTION 6
 DWG BY MAHLER PID 92131 T 6 N R 14 E

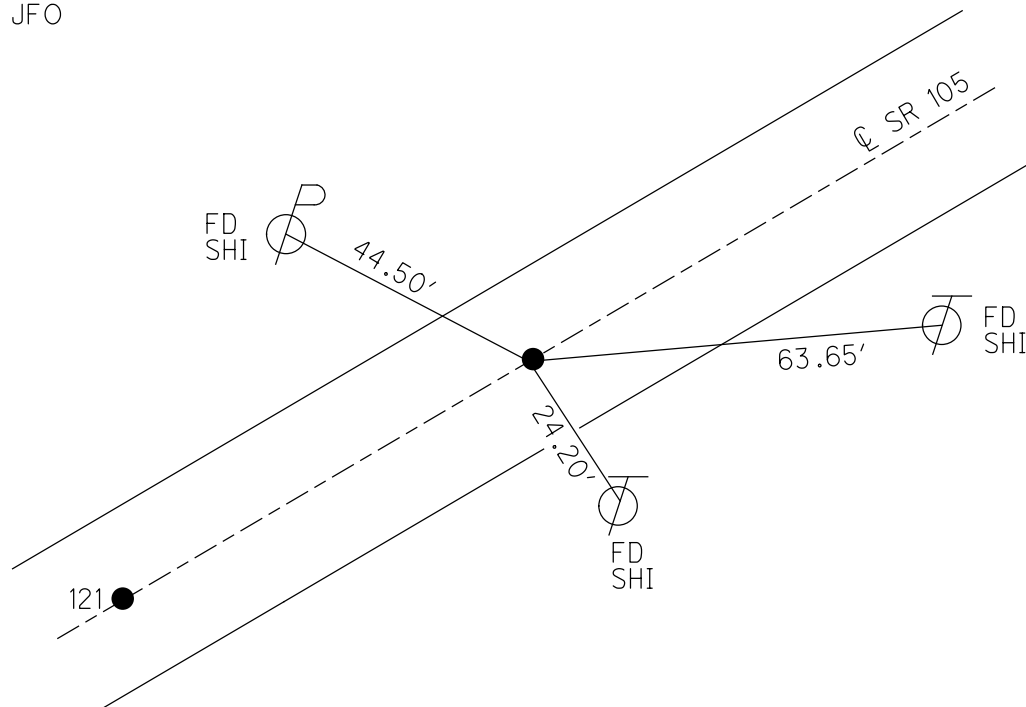
TYPE MONUMENT P.K./WASHER
 ON SURFACE - ~~BELOW~~ ON
 OFFSET \odot PAVEMENT 0.1' ~~RT~~ : RT
9.5' TO RT EDGE PAVEMENT
 STATION: 523+93.4



HORIZ.DATUM: NAD83 (2011) GEOID: 2012A
 GRID: NORTHING: 670272.857 EASTING: 1785968.815

RECORD:
 FD P.K./WASHER
 4/26/00, MB
 SET P.K./WASHER
 6-13-00, KPM
 FD P.K./WASHER
 REF122
 5-9-18, JFO

DIST.
 120-121= 99.90'
 121-122= 100.04'



O.D.O.T. DISTRICT 2 SURVEY OFFICE

PERSONNEL

REFERENCE NO. 122

120, 121

SHEET 89 OF 96

NOTES K. Moser

H.C. M. CAUTELBURY

DATE 4-26-00

ROUTE S.R. 105

R.C. M. BARNHISEL

WEATHER SUNNY

COUNTY OTTAWA

TEMP. +60°F

TOWNSHIP SALEM

SECTION 6

T6 N R 14 E

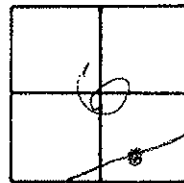
TYPE MONUMENT A-B-C = PK / WASHER

ON SURFACE - BELOW SURFACE

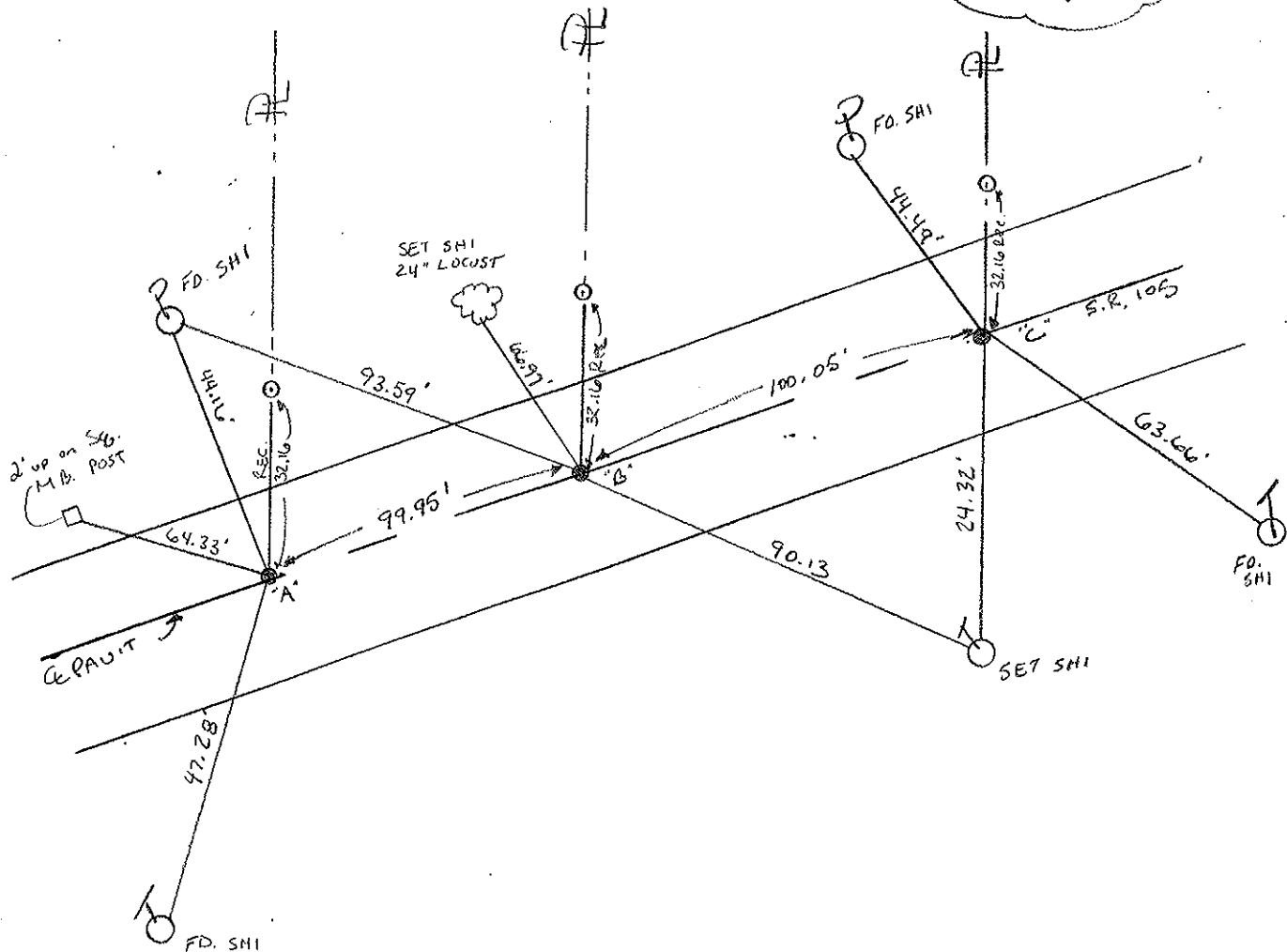
~~LEFT~~ C PAV'T. - RIGHT A=0.5' RT B=0.6' RT C=0.1' RT

TO RT. EDGE PAVEMENT A=9.3 B=9.2 C=9.5'

S.L.M. A=523+24 B=524+24 C=525+24



RESET PK/WASHERS
6-13-00
K.P.M



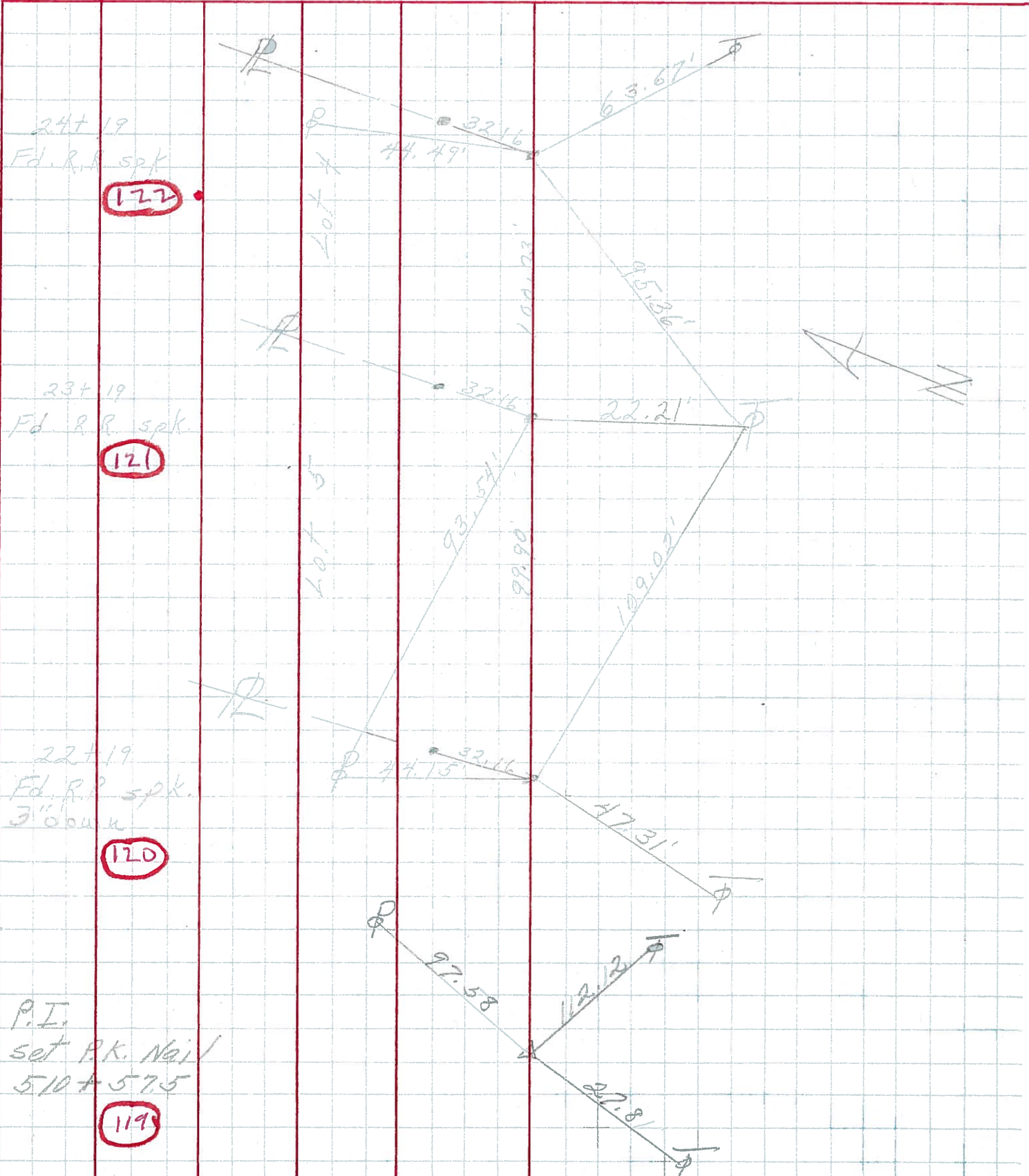
PERSONNEL TITLE PERSONNEL TITLE

COUNTY Ottawa DATE 6-12-74

S. R. 105 WEATHER Fair

SEC. 6 TEMP. 70°

DESCRIPTION Salem Twp. JOB NO. _____



24+19
Fd. R.R. spk.
122

23+19
Fd. R.R. spk.
121

22+19
Fd. R.R. spk.
3'' down
120

P.I.
set P.K. Nail
510 + 57.5
119