

O.D.O.T. DISTRICT 2 SURVEY OFFICE (USE ONLY)

PERSONNEL

REFERENCE NO. 123

SHEET 35 OF 42

NOTES RHOADES

DATE 8-5-2019

ROUTE SR 105

H.C. O'DONNELL

WEATHER SUNNY

COUNTY OTTAWA

R.C. MILLER

TEMP. 78°F

TOWNSHIP HARRIS

DWG BY MAHLER

PID 92131

SECTION 6

T 6 N R 14 E

TYPE MONUMENT MAG/WASHER

ON SURFACE - ~~BELOW~~ ON

OFFSET Q PAVEMENT 0.5' ~~LT~~ : RT

9.5' TO RT EDGE PAVEMENT

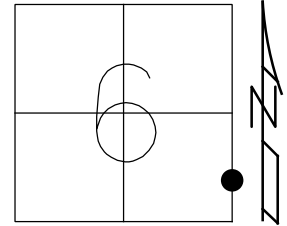
STATION: 529+93.32

HORZ.DATUM: NAD83 (2011)

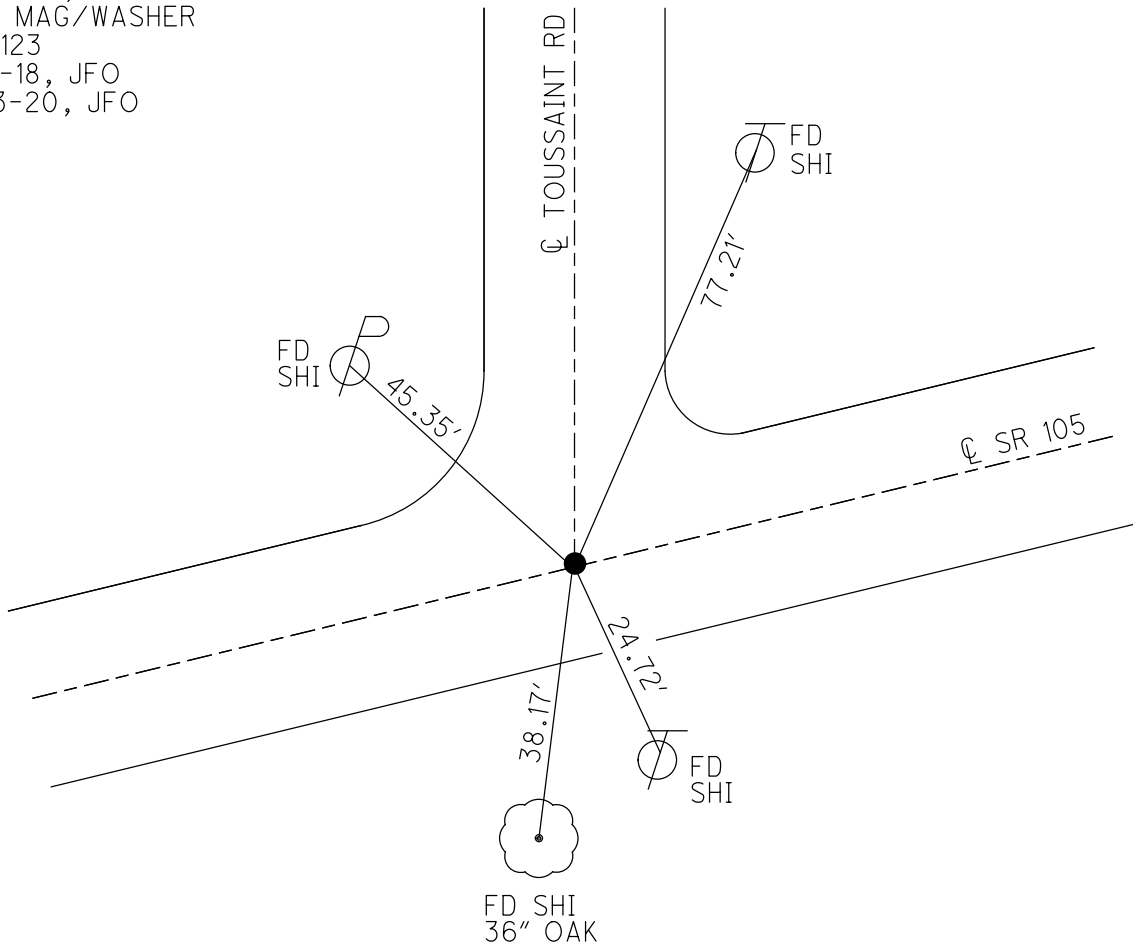
GEOID: 2012A

GRID: NORTHING: 670507.590

EASTING: 1786520.889



RECORD:
 FD P.K./WASHER
 4/26/00, MB
 SET P.K./WASHER
 6-13-00, KPM
 SET MAG/WASHER
 REF123
 5-9-18, JFO
 4-13-20, JFO



O.D.O.T. DISTRICT 2 SURVEY OFFICE

PERSONNEL

REFERENCE NO. 123

SHEET 90 OF 96

NOTES K. MOSER

H.C. M. CANSEBURY

DATE 4-26-00

ROUTE S.R. 105

R.C. M. BARWISSEL

WEATHER Sunny /

COUNTY OTTAWA

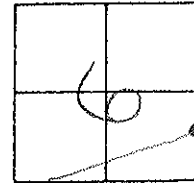
TEMP. +60°F

TOWNSHIP SALEM

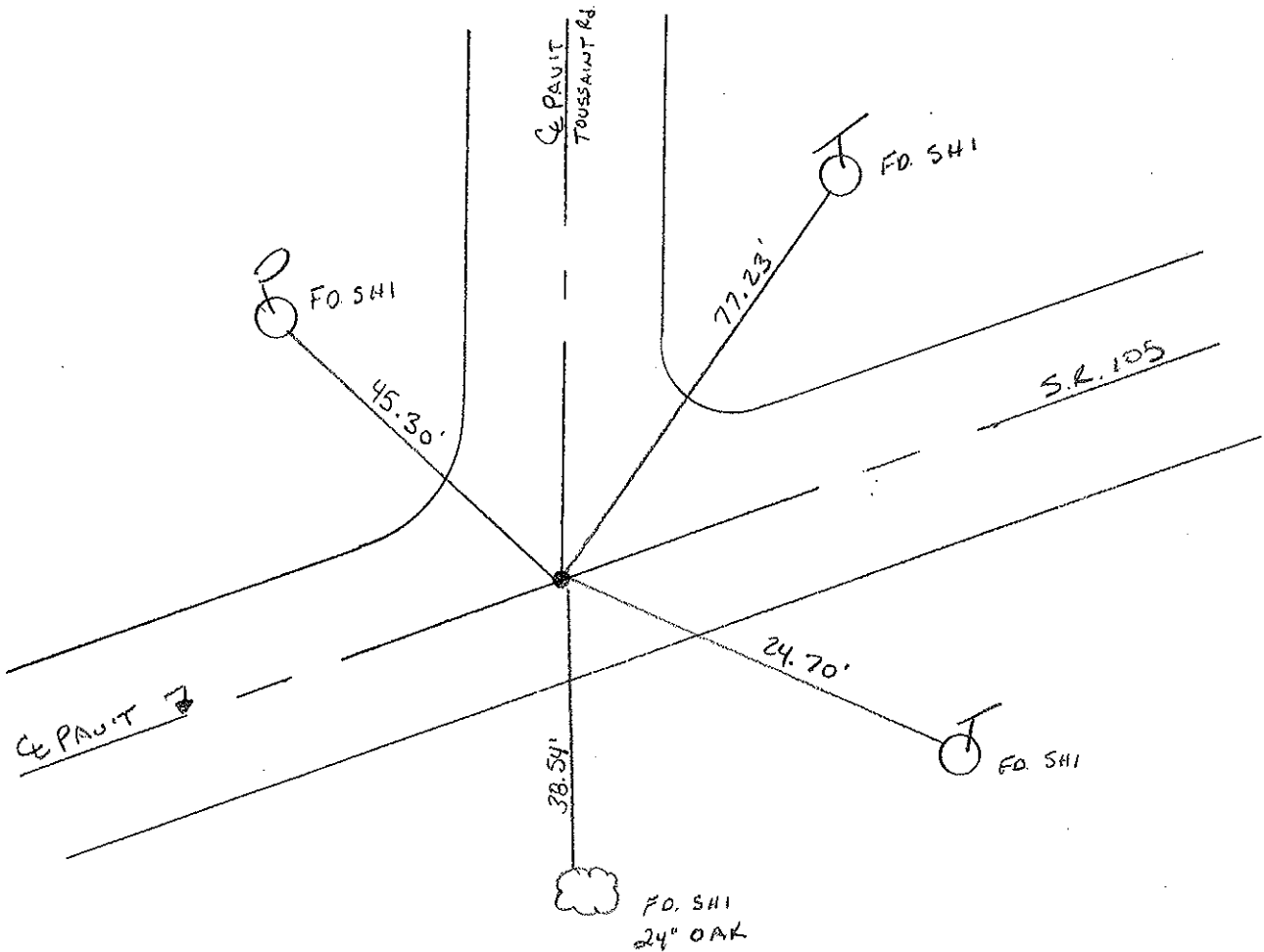
SECTION 6

T 6 N R 14 E

TYPE MONUMENT PK 1 WASHER
ON SURFACE - ~~BELOW~~ SURFACE
~~LEFT - C PAV'T.~~ - RIGHT 0.5' RT
9.5' TO RT. EDGE PAVEMENT
S.L.M. 531 + 26



RESET PK 1 WASHER
6-13-00
K.P.M.



O.D.O.T. DISTRICT 2 SURVEY OFFICE

PERSONNEL _____ REFERENCE NO. 123 SHEET _____ OF _____

NOTES Cronin DRAW 6/06/88

H.C. Ripple DATE 8/25/87

R.C. Barbour WEATHER overcast

Ceyman TEMP. 53°

ROUTE #105

COUNTY Ottawa

TOWNSHIP Salem

SECTION 6

T 6 N R 14 E

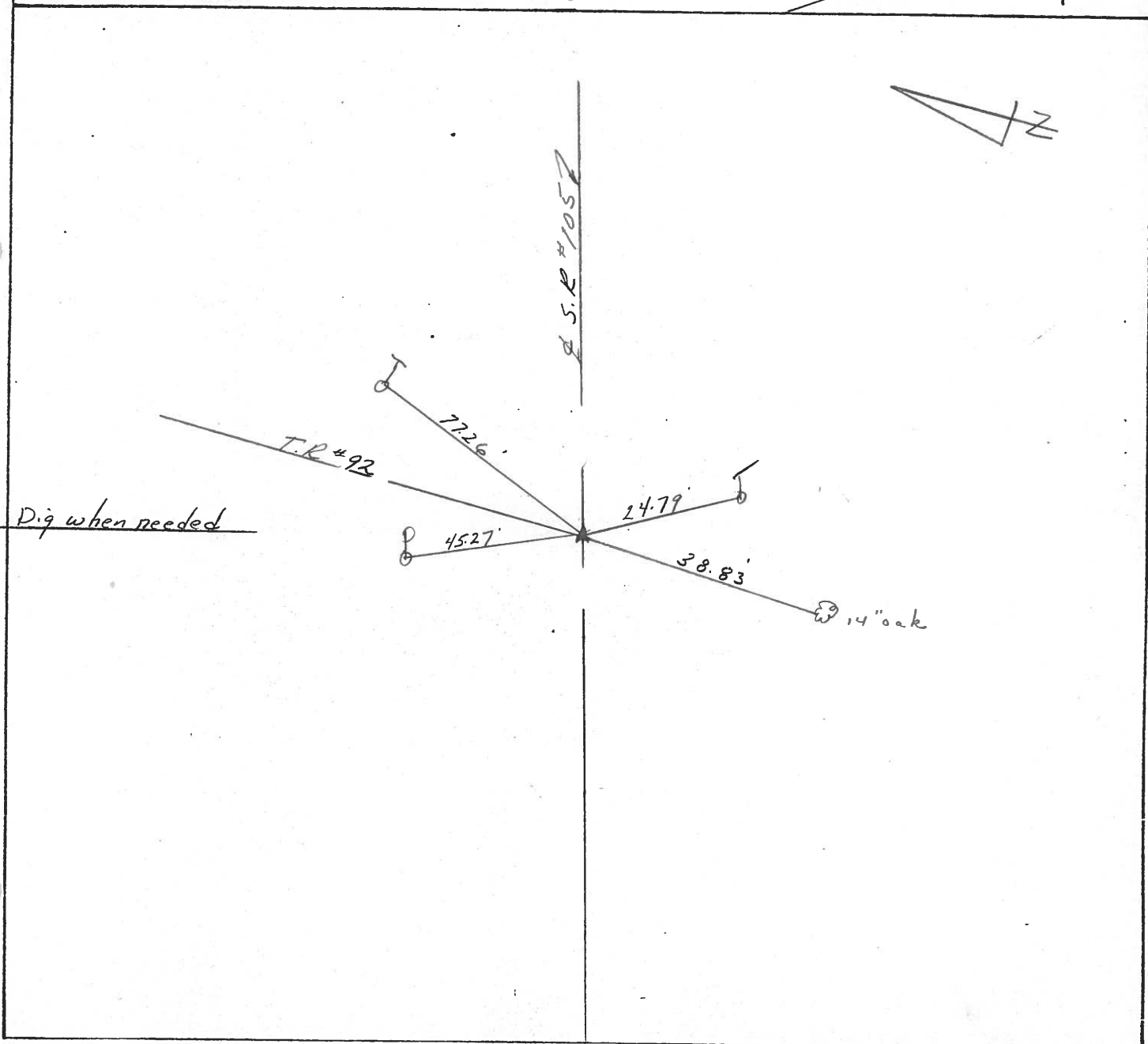
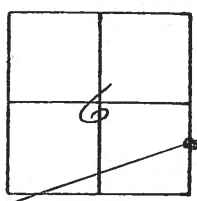
TYPE MONUMENT P.K. at top R.R. spike

ON SURFACE - BELOW _____

LEFT - CL PAV'T. - RIGHT 0.5

TO _____ EDGE PAVEMENT

S.L.M. 530+18.50



PERSONNEL TITLE PERSONNEL TITLE

Schneider Cronin
Mosser Ripple
Barbour Geyman

COUNTY Ottawa DATE 6-17-74

S. R. 105 WEATHER Cloudy

SEC. 6 & 5 TEMP. 60°

DESCRIPTION Salem Twp. JOB NO.

