

O.D.O.T. DISTRICT 2 SURVEY OFFICE (USE ONLY)

PERSONNEL

REFERENCE NO. 124

SHEET 36 OF 42

NOTES RHOADES

DATE 8-5-2019

ROUTE SR 105

H.C. O'DONNELL

WEATHER SUNNY

COUNTY OTTAWA

R.C. MILLER

TEMP. 78°F

TOWNSHIP SALEM

DWG BY MAHLER PID 92131

SECTION 5

T 6 N R 14 E

TYPE MONUMENT P.K.NAIL

ON SURFACE - ~~BELOW~~ ON

OFFSET ☉ PAVEMENT ON LT : RT

10.9' TO LT EDGE PAVEMENT

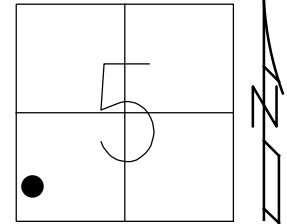
STATION: 535+08.85

HORZ.DATUM: NAD83 (2011)

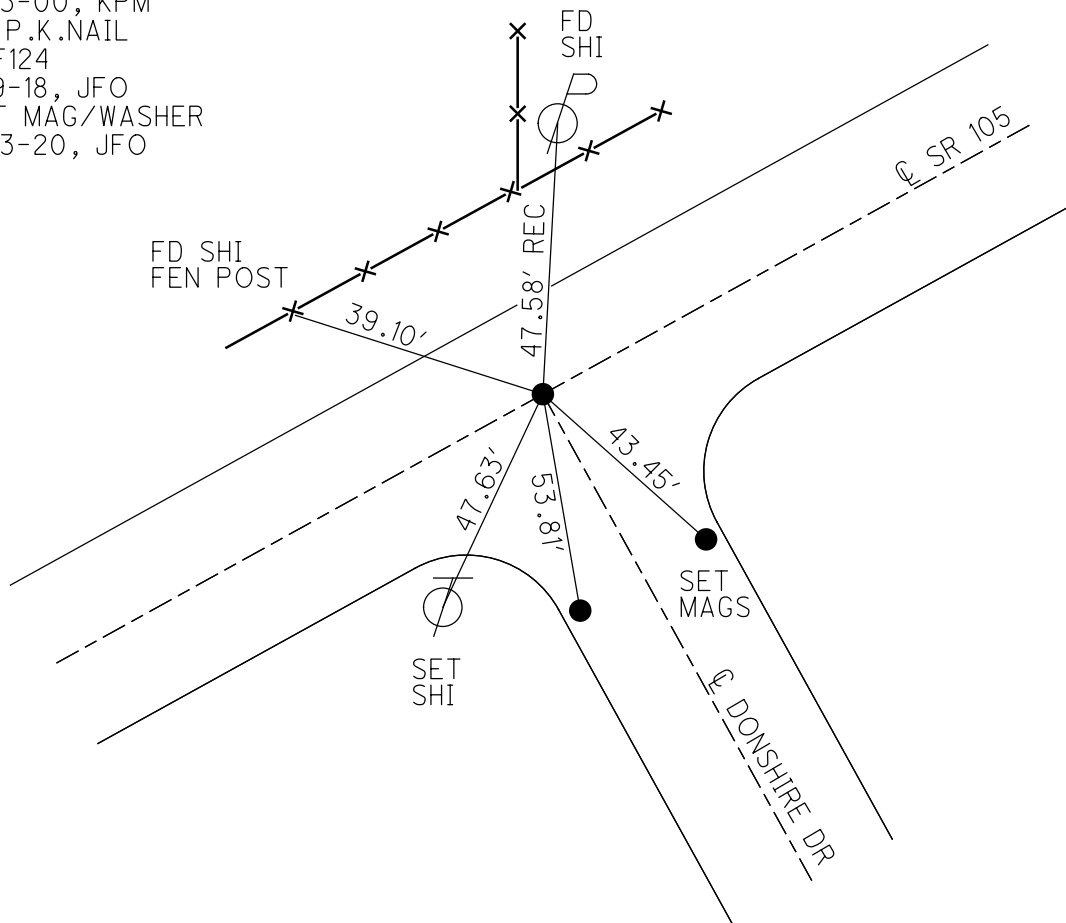
GEOID: 2012A

GRID: NORTHING: 670712.824

EASTING: 1789993.797



RECORD:
 FD LG.R.R.SPIKE
 2" DOWN
 4/25/00, MB
 SET P.K./WASHER
 6-13-00, KPM
 FD P.K.NAIL
 REF124
 5-9-18, JFO
 SET MAG/WASHER
 4-13-20, JFO



O.D.O.T. DISTRICT 2 SURVEY OFFICE

PERSONNEL

REFERENCE NO. 124

SHEET 91 OF 96

NOTES K. MOSER

H.C. M. CAMERBURY

DATE 4-25-00

ROUTE S.R. 105

R.C. M. BARNHISEL

WEATHER Sunny / BREEZY

COUNTY OTTAWA

TEMP. +60°F

TOWNSHIP SALEM

SECTION 5

T6 N R 14 E

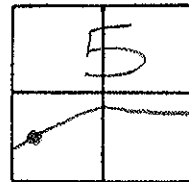
TYPE MONUMENT LG R.R. SPIKE

ON SURFACE - BELOW 2" Below

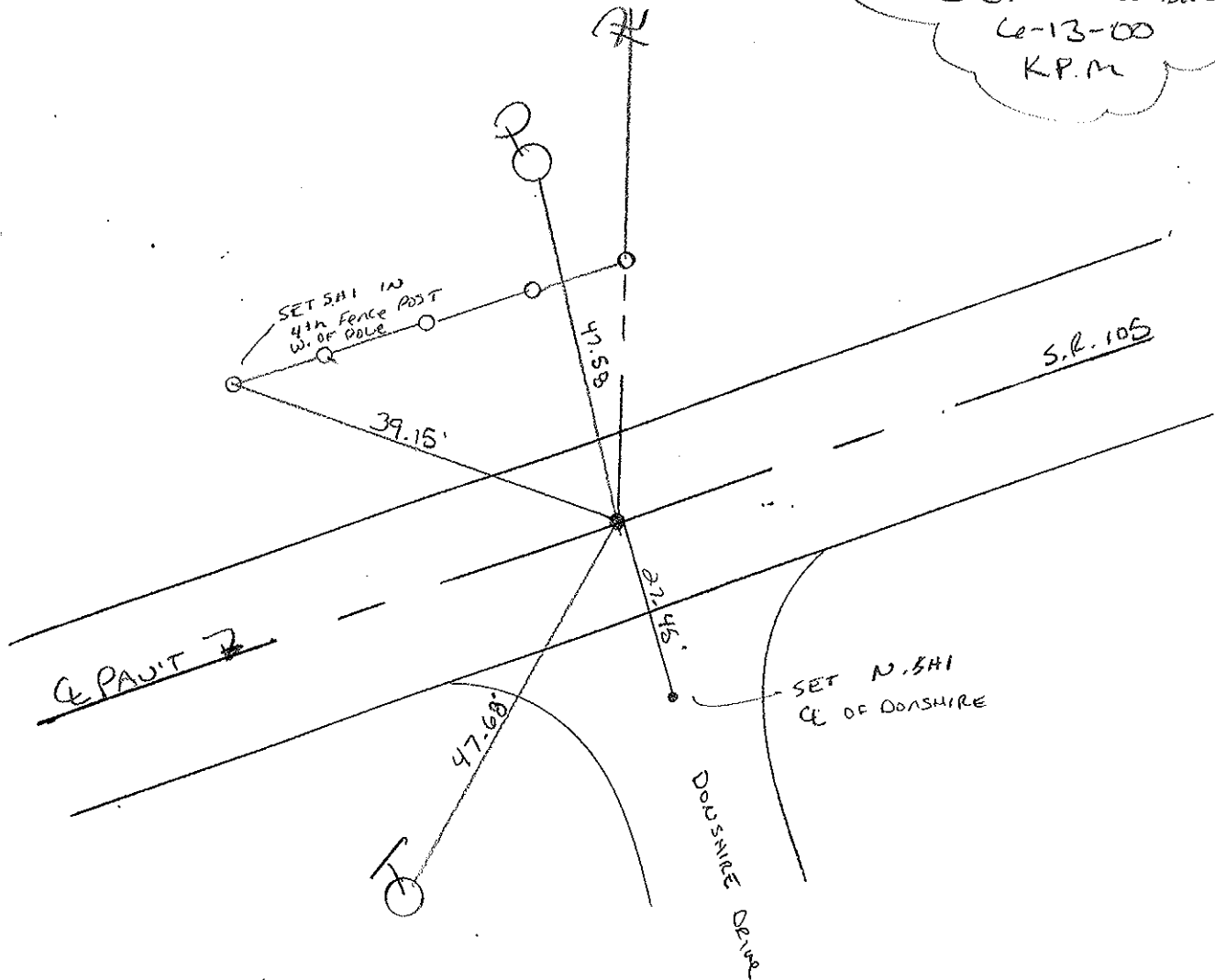
LEFT - CL PAV'T. - RIGHT CL OF BOTH

10.9 TO LT EDGE PAVEMENT

S.L.M. S36 +42



RESET PK / WASHER
6-13-00
K.P.M.



PERSONNEL TITLE PERSONNEL TITLE

Schneider
Mosser
Barbour

Cronin
Ripple
Geyman

COUNTY Ottawa

DATE 6-17-74

S. R. 105

WEATHER Cloudy

SEC. 655

TEMP. 60°

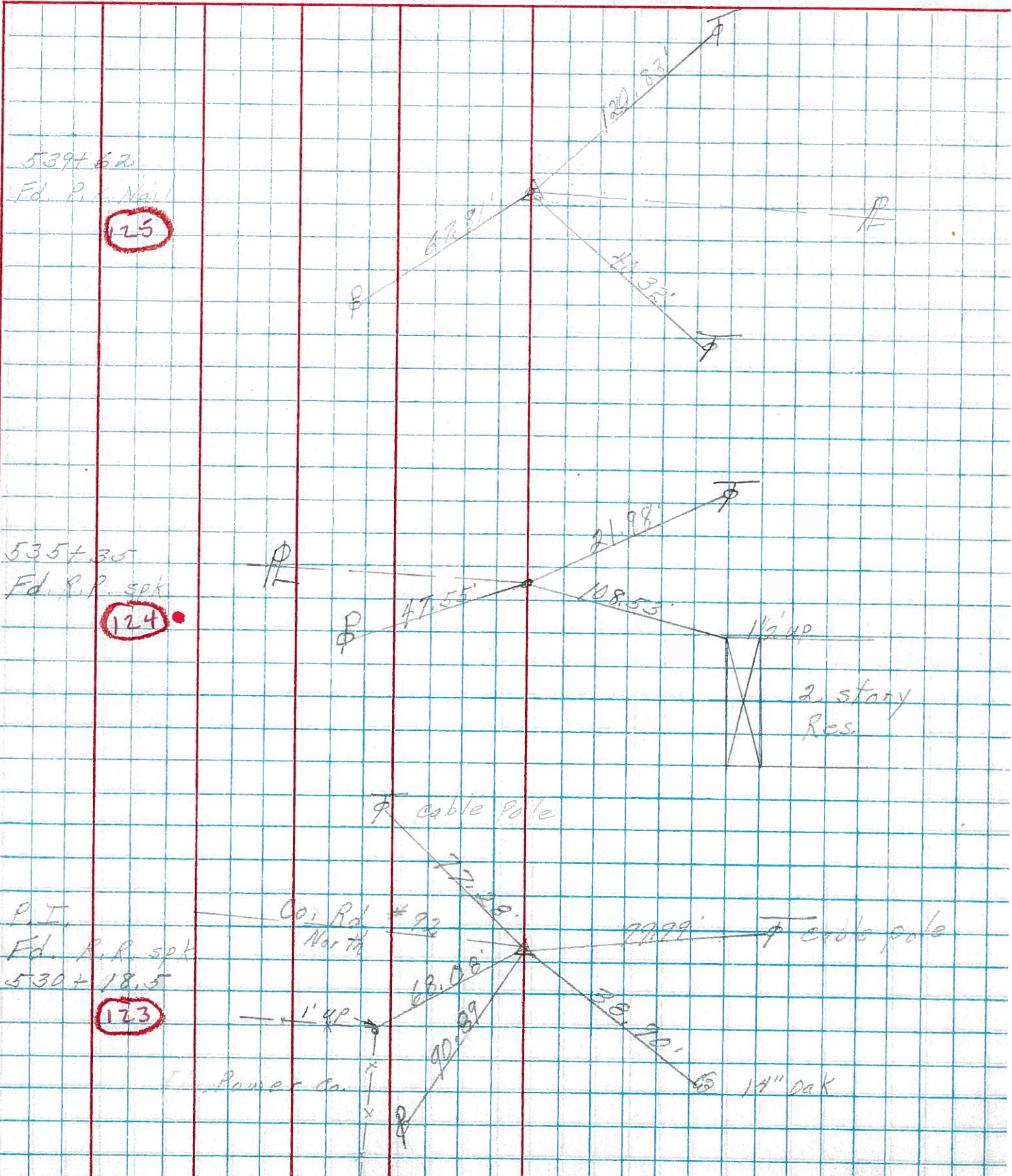
DESCRIPTION Salem Twp.

JOB NO.

LEFT

CENTER LINE

RIGHT



539+62
Fd. P. S. Nail

125

535+35
Fd. P. R. spk

124

P. I.
Fd. P. R. spk
530+18.5

123