

O.D.O.T. DISTRICT 2 SURVEY OFFICE (USE ONLY)

PERSONNEL

REFERENCE NO. 126

SHEET 39 OF 42

NOTES RHOADES

DATE 8-5-2019

ROUTE SR 105

H.C. O'DONNELL

WEATHER SUNNY

COUNTY OTTAWA

R.C. MILLER

TEMP. 78°F

TOWNSHIP SALEM

SECTION 5

DWG BY MAHLER PID 92131

T 6 N R 14 E

TYPE MONUMENT MAG/WASHER

ON SURFACE - ~~BELOW~~ ON

OFFSET Q PAVEMENT 1.0' ~~LT~~ : RT

9.4' TO LT EDGE PAVEMENT

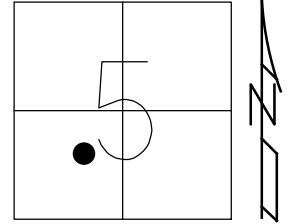
STATION: 544+53.68

HORZ. DATUM: NAD83 (2011)

GEOID: 2012A

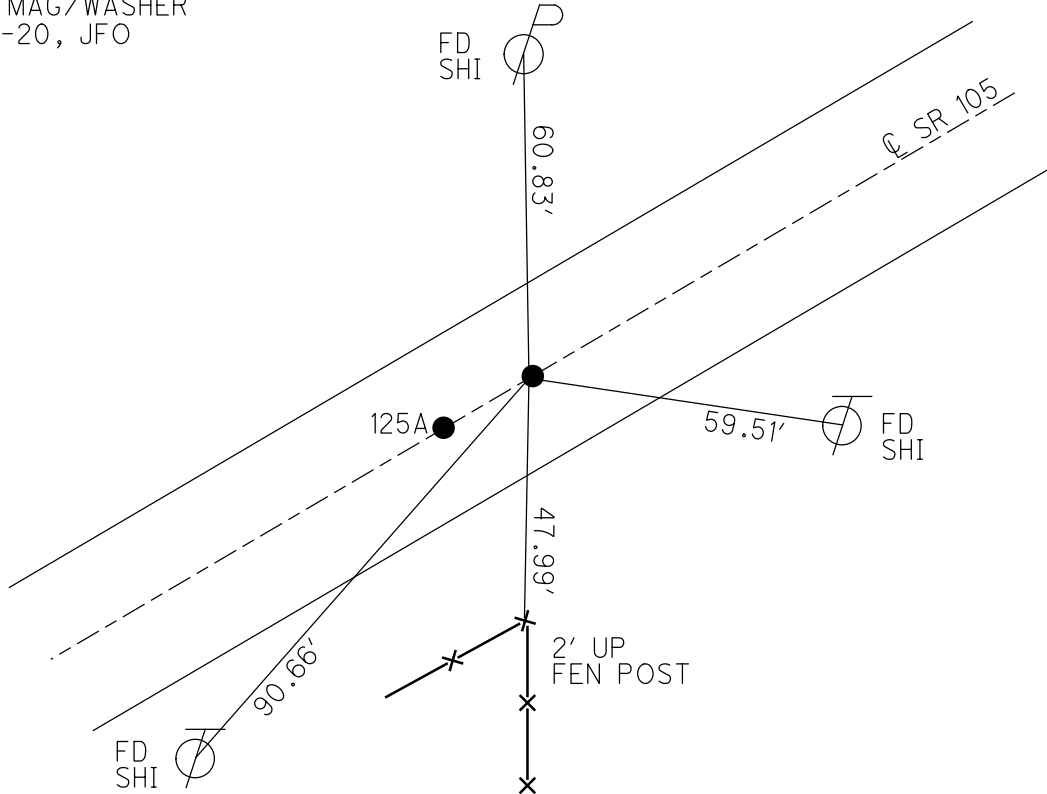
GRID: NORTHING: 671080.336

EASTING: 1787864.220



RECORD:  
 FD P.K./WASHER  
 4/25/00, MB  
 FD MAG/WASHER  
 REF126  
 5-9-18, JFO  
 SET MAG/WASHER  
 4-13-20, JFO

DIST. 125A-126 = 12.60'



# O.D.O.T. DISTRICT 2 SURVEY OFFICE

PERSONNEL

REFERENCE NO. 124

SHEET 93 OF 96

NOTES K. MOSER

H.C. M. CANTERBURY

DATE 4-25-00

ROUTE S.R. 105

R.C. M. GARNHISEL

WEATHER Sunny / BREEZY

COUNTY OTTAWA

TEMP. +60°F

TOWNSHIP SALEM

SECTION 5

T6 N R 14 E

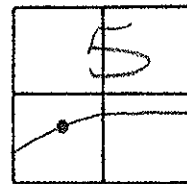
TYPE MONUMENT PK WASHER

ON SURFACE - BELOW SURFACE

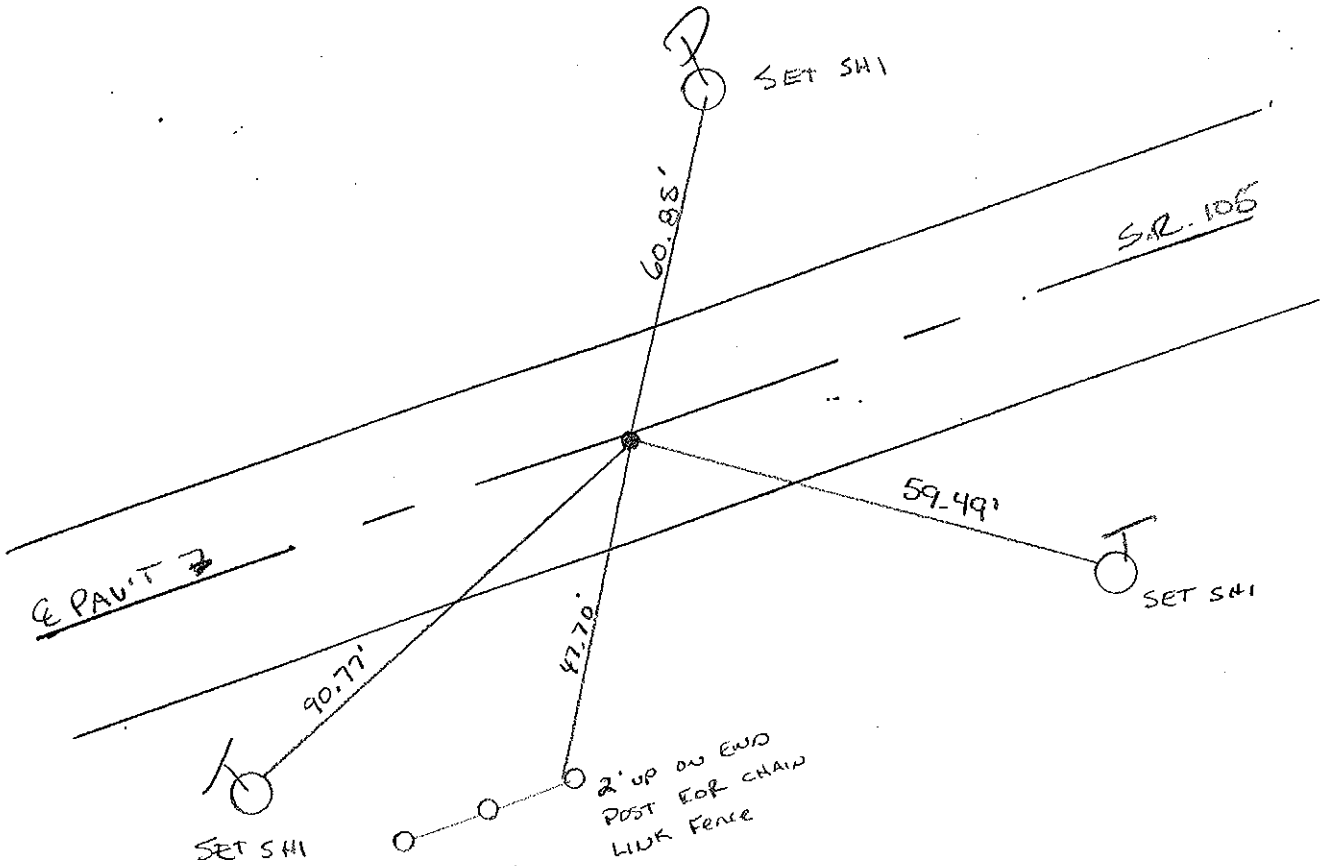
DEPT. - C. PAV'T. - RIGHT 1.0 RT.

9.4' TO RT. EDGE PAVEMENT

S.L.M. 545 + 90



DIG IF NEEDED



PERSONNEL TITLE PERSONNEL TITLE

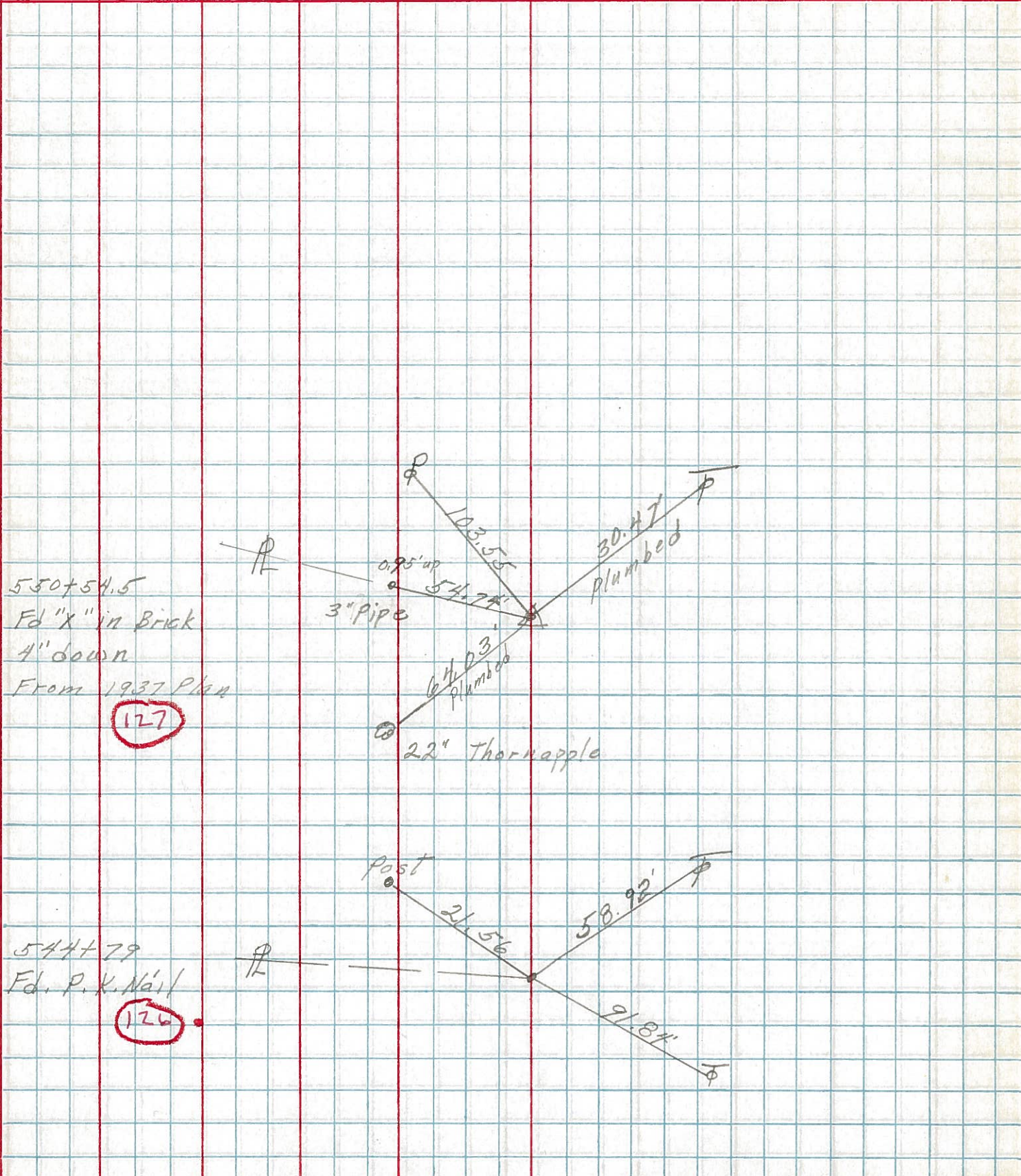
COUNTY Ottawa DATE 6-17-74

S. R. 105 WEATHER cloudy

SEC. 5 TEMP. 65°

DESCRIPTION Salem Twp. JOB NO.

LEFT CENTER LINE RIGHT



550+54.5  
 Fd "X" in Brick  
 4" down  
 From 1937 Plan

127

544+79  
 Fd. P. K. Nail

126

