

O.D.O.T. DISTRICT 2 SURVEY OFFICE (USE ONLY)

PERSONNEL

REFERENCE NO. 127

SHEET 40 OF 43

NOTES NIESE

DATE 6/22/23

ROUTE SR 105

H.C. AUBLE

WEATHER WINDY

COUNTY OTTAWA

R.C. NIESE

TEMP. 78°

TOWNSHIP SALEM

SECTION 5

DWG BY RHOADES PID 102952

T 6 N R 14 E

TYPE MONUMENT MAG SHANK

ON SURFACE - ~~BELOW~~ ON

OFFSET CL PAVEMENT 1.2' ~~LT~~ : RT

9.2' TO RT EDGE PAVEMENT

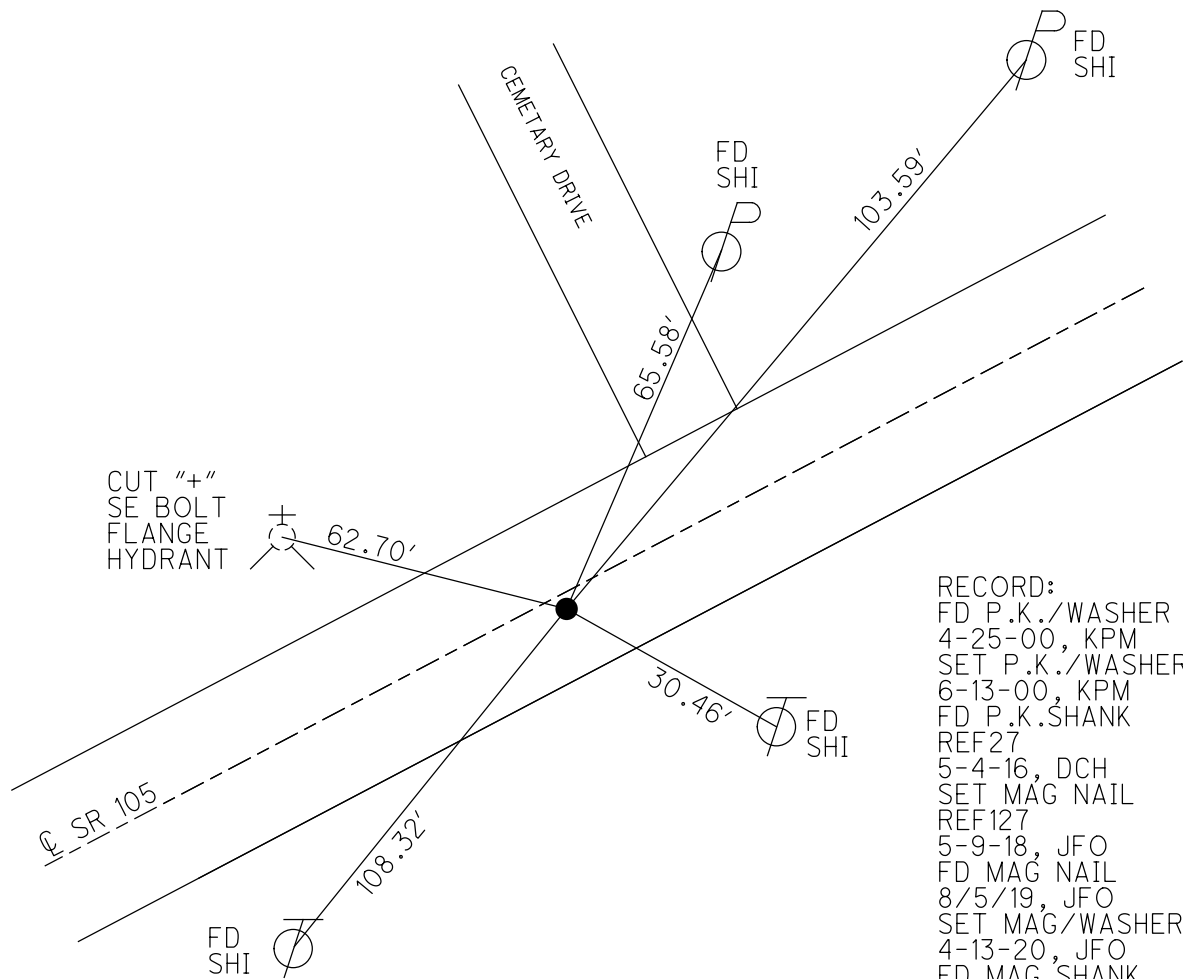
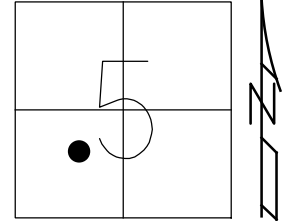
STATION: 550+29.83

HORIZ.DATUM: NAD83 2011

GEOID: NAVD88 2012A

GRID: NORTHING: 671310.884

EASTING: 1788392.234

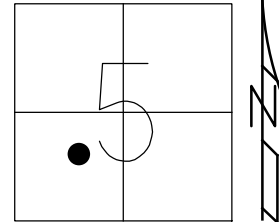


RECORD:
 FD P.K./WASHER
 4-25-00, KPM
 SET P.K./WASHER
 6-13-00, KPM
 FD P.K.SHANK
 REF27
 5-4-16, DCH
 SET MAG NAIL
 REF127
 5-9-18, JFO
 FD MAG NAIL
 8/5/19, JFO
 SET MAG/WASHER
 4-13-20, JFO
 FD MAG SHANK
 REF127
 6/22/23, TDN

O.D.O.T. DISTRICT 2 SURVEY OFFICE (USE ONLY)

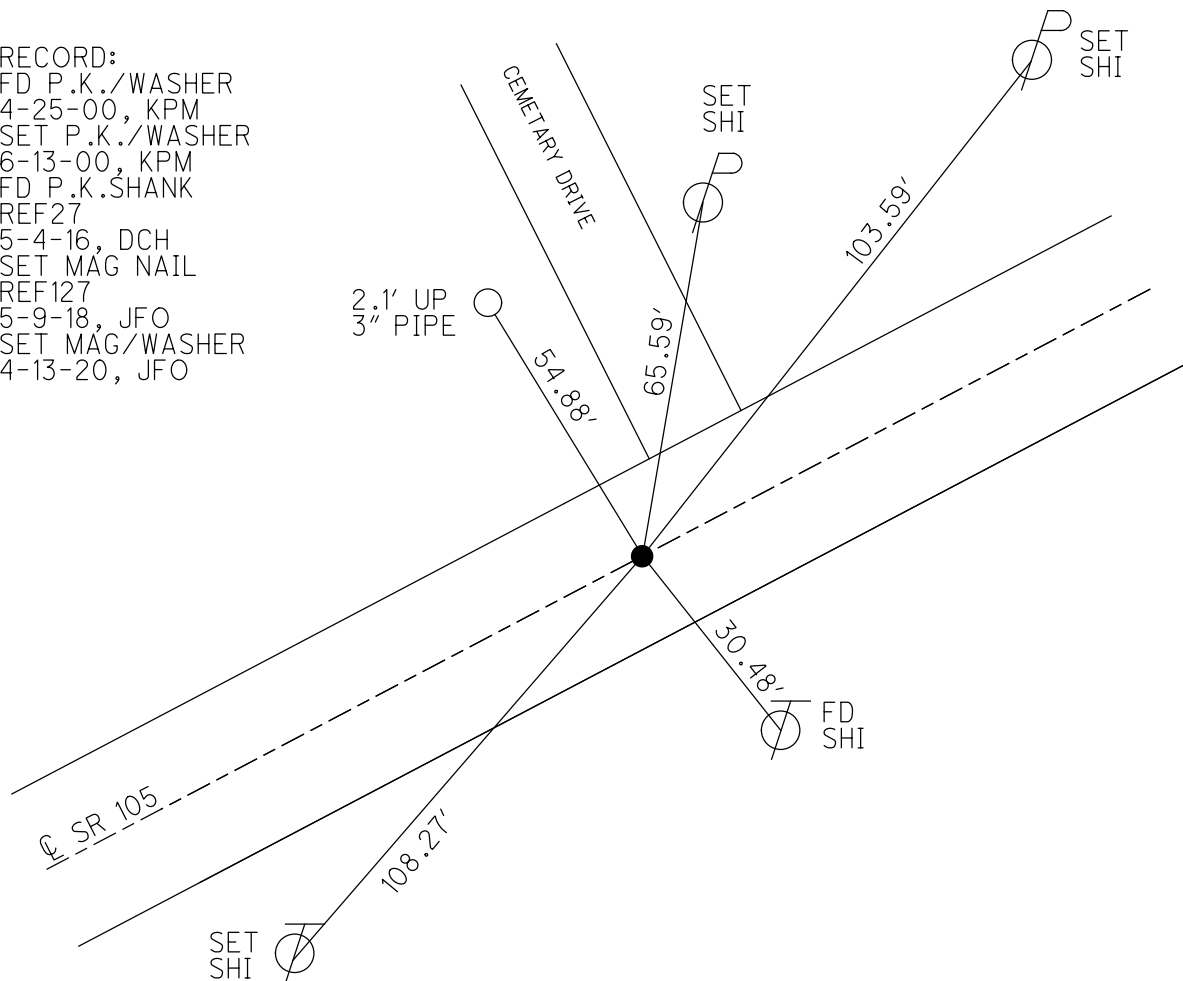
PERSONNEL _____ REFERENCE NO. 127 SHEET 40 OF 42
 NOTES RHOADES DATE 8-5-19 ROUTE SR 105
 H.C. O'DONNELL WEATHER SUNNY COUNTY OTTAWA
 R.C. MILLER TEMP. 78° TOWNSHIP SALEM
 DWG BY JAMES PID 92131 SECTION 5
 T 6 N R 14 E

TYPE MONUMENT MAG NAIL
 ON SURFACE - ~~BELOW~~ ON
 OFFSET Q PAVEMENT 1.2' ~~LT~~ : RT
9.2' TO RT EDGE PAVEMENT
 STATION: 550+29.83



HORZ. DATUM: NAD83 2011 GEOID: NAVD88 2012A
 GRID: NORTHING: 671310.853 EASTING: 1788392.251

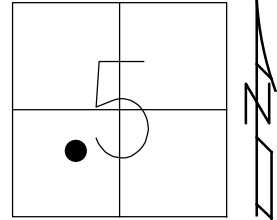
RECORD:
 FD P.K./WASHER
 4-25-00, KPM
 SET P.K./WASHER
 6-13-00, KPM
 FD P.K. SHANK
 REF27
 5-4-16, DCH
 SET MAG NAIL
 REF127
 5-9-18, JFO
 SET MAG/WASHER
 4-13-20, JFO



O.D.O.T. DISTRICT 2 SURVEY OFFICE (USE ONLY)

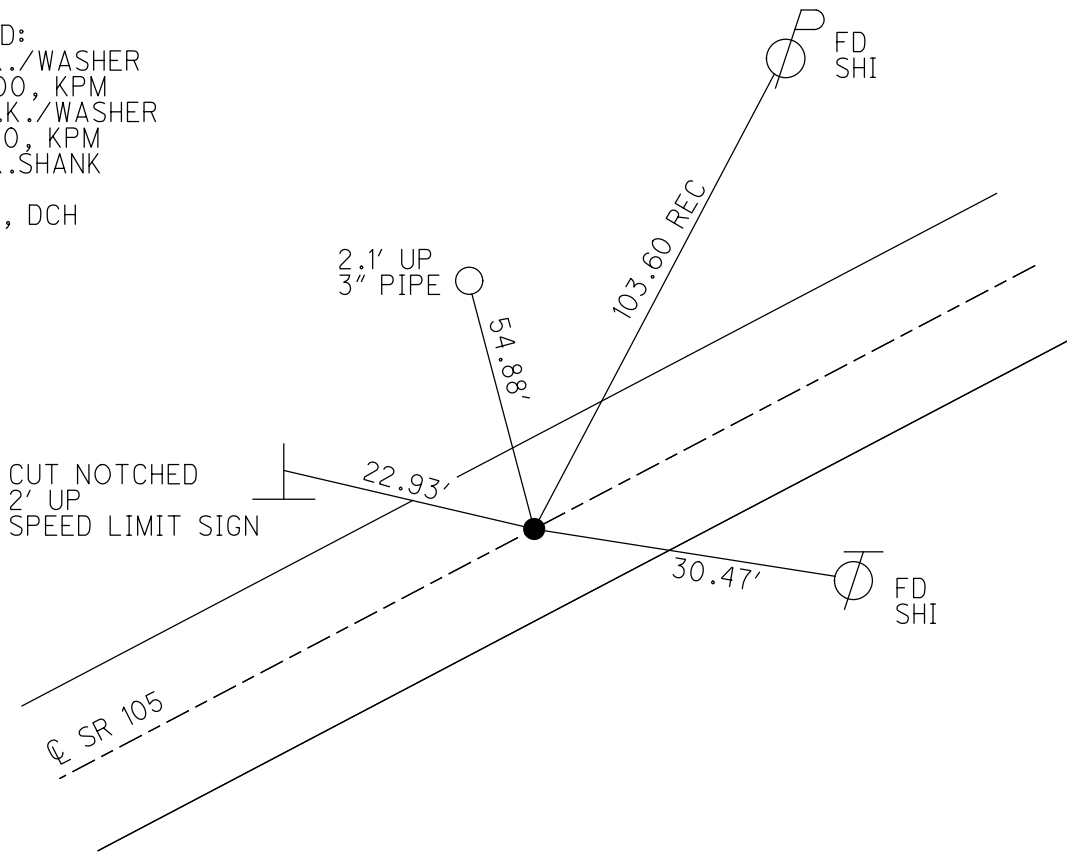
PERSONNEL _____ REFERENCE NO. 127 SHEET 1 OF 3
 NOTES MOSER DATE 4-25-00 ROUTE SR 105
 H.C. CANTERBURY WEATHER SUNNY/BREEZY COUNTY OTTAWA
 R.C. BARNHISEL TEMP. 60° TOWNSHIP SALEM
 DWG BY JAMES PID 95757 SECTION 5
 T 6 N R 14 E

TYPE MONUMENT P.K./WASHER
~~ON SURFACE - BELOW~~ 1.5"
 OFFSET CL PAVEMENT 1.2' ~~±~~ : RT
9.2' TO RT EDGE PAVEMENT
 STATION: 551+67



HORZ. DATUM: NAD83 2011 GEOID: NAVD88 2012A
 GRID: NORTHING: 671310.893 EASTING: 1788392.228

RECORD:
 FD P.K./WASHER
 4-25-00, KPM
 SET P.K./WASHER
 6-13-00, KPM
 FD P.K. SHANK
 REF27
 5-4-16, DCH



O.D.O.T. DISTRICT 2 SURVEY OFFICE

PERSONNEL

REFERENCE NO. 127

SHEET 94 OF 96

NOTES K. MOSER

H.C. M. CARTERBURY

DATE 4-25-00

ROUTE S.R. 105

R.C. M. GARNHISEL

WEATHER SUNNY / BREEZY

COUNTY OTTAWA

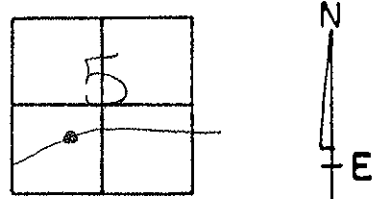
TEMP. +60°F

TOWNSHIP SALEM

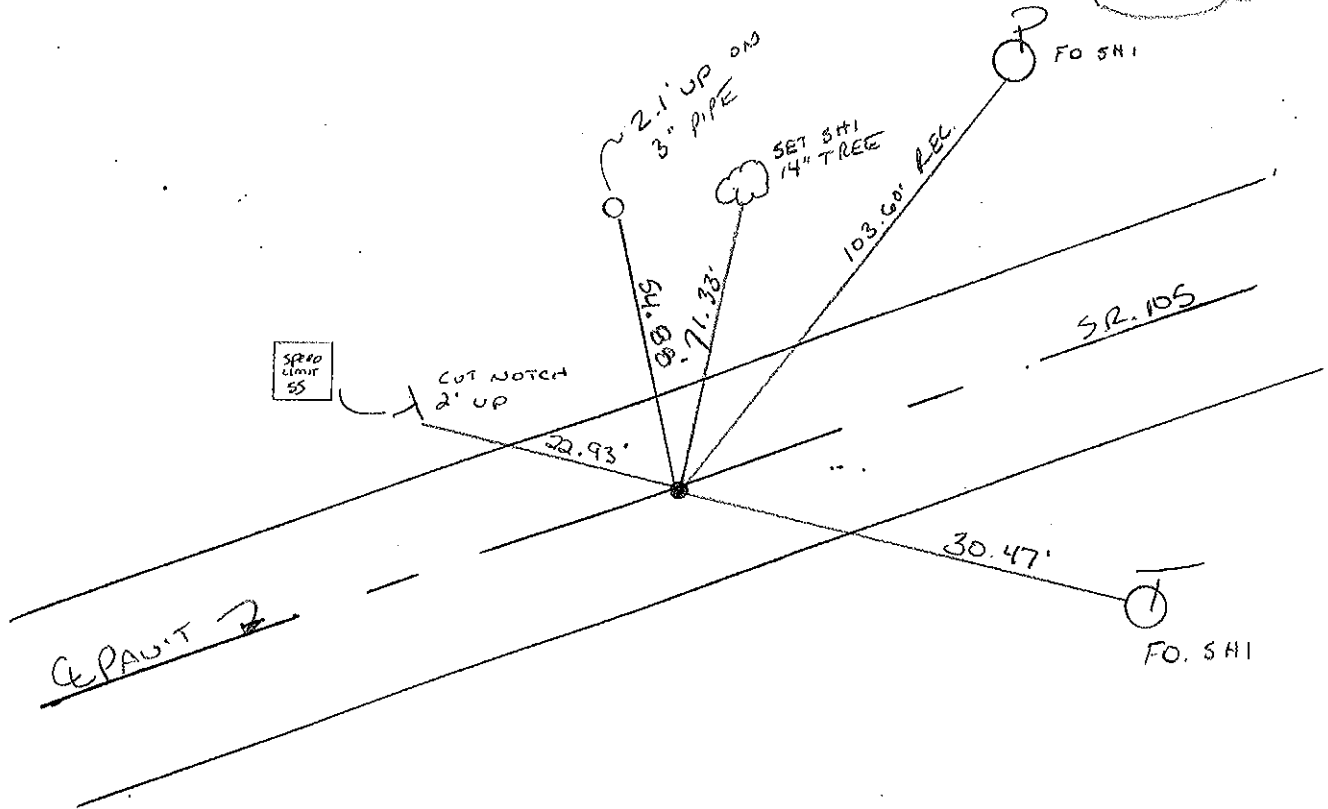
SECTION 5

T6 N 14 E

TYPE MONUMENT PK WASHER
 ON SURFACE - BELOW 1 1/2" BELOW
 LEFT - C. PAV'T. - RIGHT 1.2' RT.
9.2' TO RT. EDGE PAVEMENT
 S.L.M. 551+67



RESET PK WASHER
 6-13-00
 KPM



O.D.O.T. DISTRICT 2 SURVEY OFFICE

PERSONNEL

REFERENCE NO. 127

SHEET OF

NOTES Aronin

DRAW 6/06/88

H.C. Ripple

DATE 8/25/87

ROUTE #105

R.C. Barbour

WEATHER overcast

COUNTY Ottawa

Geyman

TEMP. 53°

TOWNSHIP Salem

SECTION 5

T 6 N R 14 E

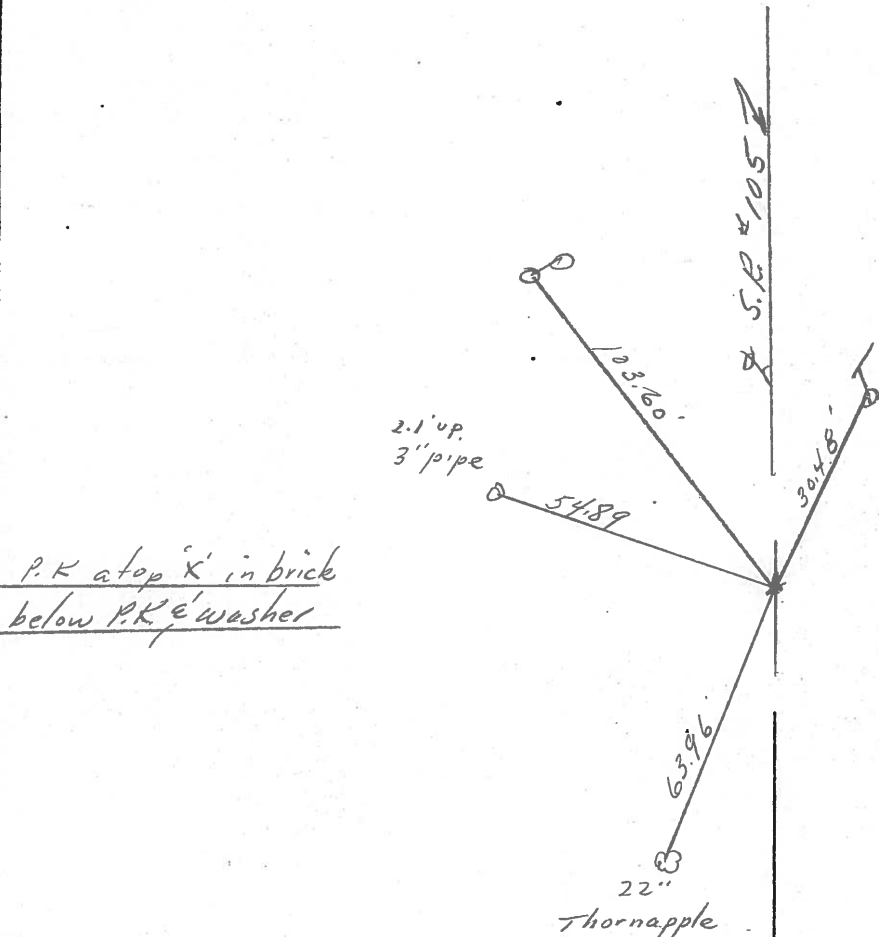
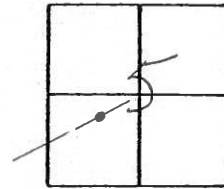
TYPE MONUMENT P.K. & washer

ON SURFACE - BELOW

LEFT - € PAV'T. - RIGHT 1'

 TO EDGE PAVEMENT

S.L.M. 550 + 54.50



PERSONNEL TITLE PERSONNEL TITLE

COUNTY Ottawa DATE 6-17-74

S. R. 105 WEATHER cloudy

SEC. 5 TEMP. 65°

DESCRIPTION Salem Twp. JOB NO.

