

O.D.O.T. DISTRICT 2 SURVEY OFFICE (USE ONLY)

PERSONNEL

REFERENCE NO. 128

SHEET 41 OF 43

NOTES ASTON

DATE 10/23/23

ROUTE SR 105

H.C. NIESE

WEATHER SUNNY

COUNTY OTTAWA

R.C. ASTON

TEMP. 39°

TOWNSHIP SALEM

DWG BY RHOADES

PID 102952

SECTION 5

T 6 N R 14 E

TYPE MONUMENT MAG/WASHER

ON SURFACE - ~~BELOW~~ ON

OFFSET 8.0'  $\odot$  PAVEMENT 3.0' LT : ~~RT~~

8.0' TO LT EDGE PAVEMENT

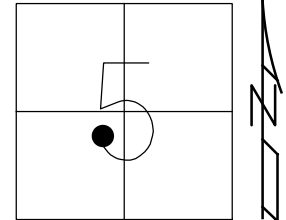
STATION: 556+03.90

HORZ.DATUM: NAD83 2011

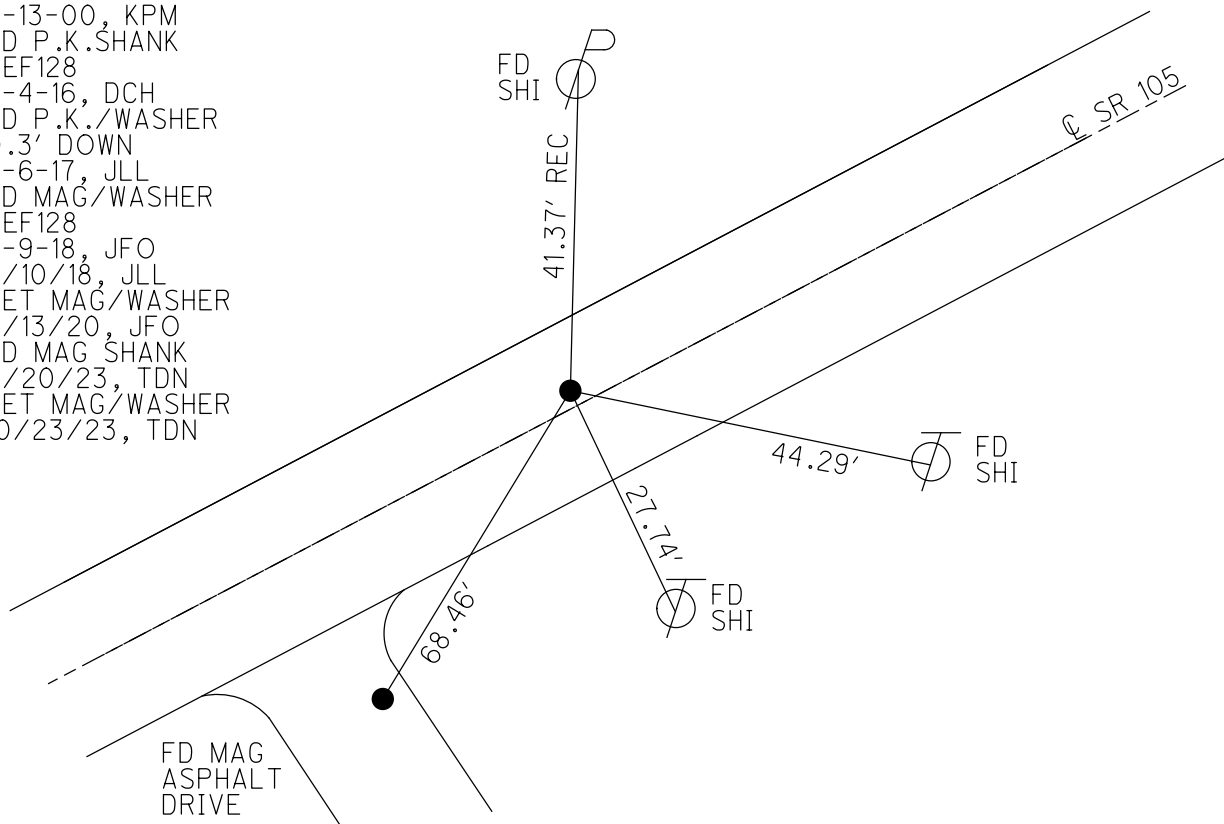
GEOID: NAVD88 2012A

GRID: NORTHING: 671542.886

EASTING: 1788917.380



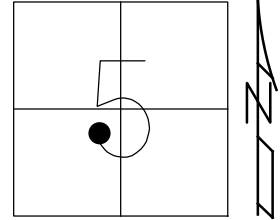
RECORD:  
 STA.5+74  
 SET NAIL  
 6/20/74  
 FD P.K./WASHER  
 4-25-00, KPM  
 SET P.K./WASHER  
 6-13-00, KPM  
 FD P.K.SHANK  
 REF128  
 5-4-16, DCH  
 FD P.K./WASHER  
 0.3' DOWN  
 7-6-17, JLL  
 FD MAG/WASHER  
 REF128  
 5-9-18, JFO  
 7/10/18, JLL  
 SET MAG/WASHER  
 4/13/20, JFO  
 FD MAG SHANK  
 6/20/23, TDN  
 SET MAG/WASHER  
 10/23/23, TDN



O.D.O.T. DISTRICT 2 SURVEY OFFICE (USE ONLY)

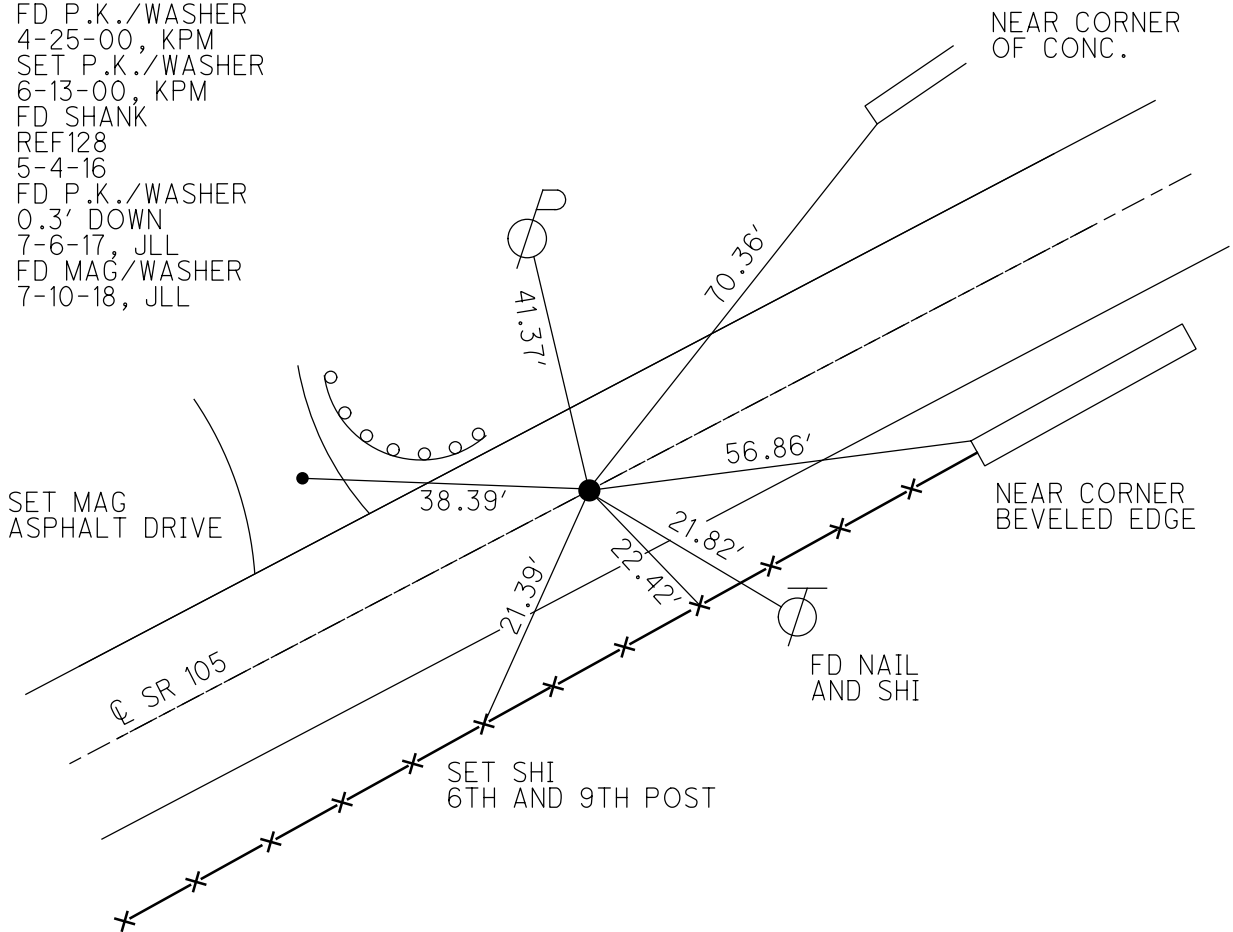
PERSONNEL	REFERENCE NO. <u>128</u>	SHEET <u>2</u> OF <u>3</u>
NOTES <u>O'DONNELL</u>	DATE <u>7-6-17</u>	ROUTE <u>SR 105</u>
H.C. <u>LEU</u>	WEATHER <u>CLOUDY</u>	COUNTY <u>OTTAWA</u>
R.C. <u>CARSON</u>	TEMP. <u>70°</u>	TOWNSHIP <u>SALEM</u>
<u>POORE</u>		SECTION <u>5</u>
DWG BY <u>JAMES</u>	PID <u>95757</u>	T <u>6</u> N R <u>14</u> E

TYPE MONUMENT P.K./WASHER  
~~ON SURFACE~~ - BELOW 0.3'  
 OFFSET  $\odot$  PAVEMENT ON LT : RT  
8.0' TO LT EDGE PAVEMENT  
 STATION: 557+42



HORZ.DATUM: NAD83 2011 GEOID: NAVD88 2012A  
 GRID: NORTHING: 671542.926 EASTING: 1788917.349

RECORD:  
 FD P.K./WASHER  
 4-25-00, KPM  
 SET P.K./WASHER  
 6-13-00, KPM  
 FD SHANK  
 REF128  
 5-4-16  
 FD P.K./WASHER  
 0.3' DOWN  
 7-6-17, JLL  
 FD MAG/WASHER  
 7-10-18, JLL



# O.D.O.T. DISTRICT 2 SURVEY OFFICE

PERSONNEL

REFERENCE NO. 128

SHEET 95 OF 96

NOTES K. MOSER

H.C. M. CAWTERBURY

DATE 4-25-00

ROUTE S.R. 105

R.C. M. BARNHISEL

WEATHER Sunny / BREEZY

COUNTY OTTAWA

TEMP. +60°F

TOWNSHIP SALEM

SECTION 5

T6 N R 14 E

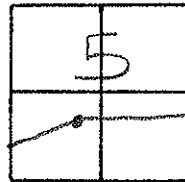
TYPE MONUMENT PK / WASHER

ON SURFACE - ~~BELOW~~ SURFACE

LEFT - ℄ PAV'T. - RIGHT

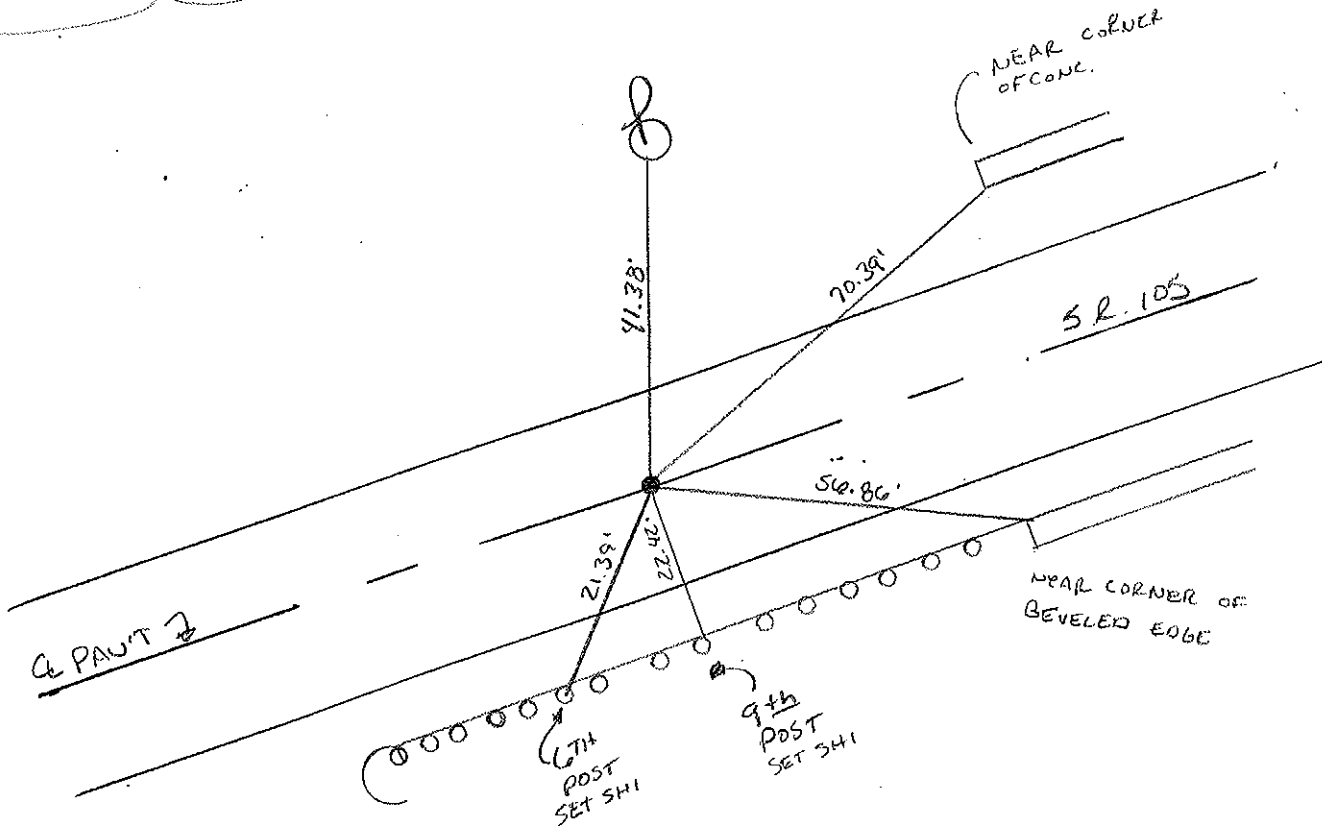
8.0 TO LT. EDGE PAVEMENT

S.L.M. 557+42



Records:  
Sta. 5+74 plan

RESET PK / WASHER  
6-13-00  
11 PM



# O.D.O.T. DISTRICT 2 SURVEY OFFICE

PERSONNEL

REFERENCE NO. 128

SHEET 95 OF 96

NOTES K. MOSER

H.C. M. CANTERBURY

DATE 4-25-00

ROUTE S.R. 105

R.C. M. GARNHISEL

WEATHER Sunny / BREEZY

COUNTY OTTAWA

TEMP. +60°F

TOWNSHIP SALEM

SECTION 5

T6 N R14 E

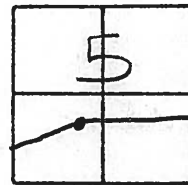
TYPE MONUMENT PK / WASHER

ON SURFACE BELOW SURFACE

LEFT-☉ PAV'T. - RIGHT

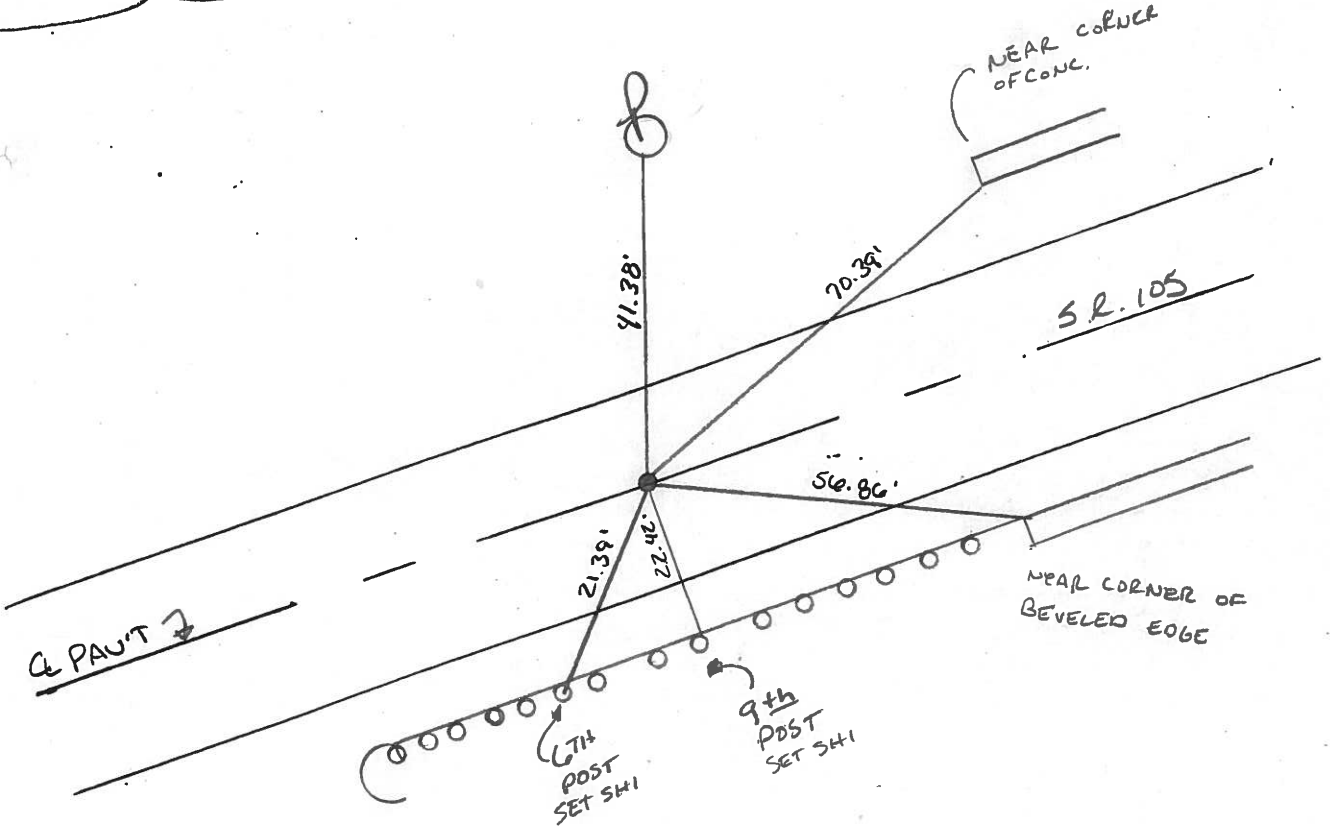
B.O. TO LT. EDGE PAVEMENT

S.L.M. 557+42



Records:  
Sta. 5+74 PLAN

RESET PK / WASHER  
6-13-00  
12 PM



# O.D.O.T. DISTRICT 2 SURVEY OFFICE

PERSONNEL

REFERENCE NO. \_\_\_\_\_

SHEET \_\_\_\_\_ OF \_\_\_\_\_

NOTES Cronin

DRAW 6/06/88

H.C. Ripke

DATE 8/25/87

ROUTE #105

R.C. Barbour

WEATHER overcast

COUNTY Ottawa

Geyman

TEMP. 53°

TOWNSHIP Salem

SECTION 5

T 6 N R 14 E

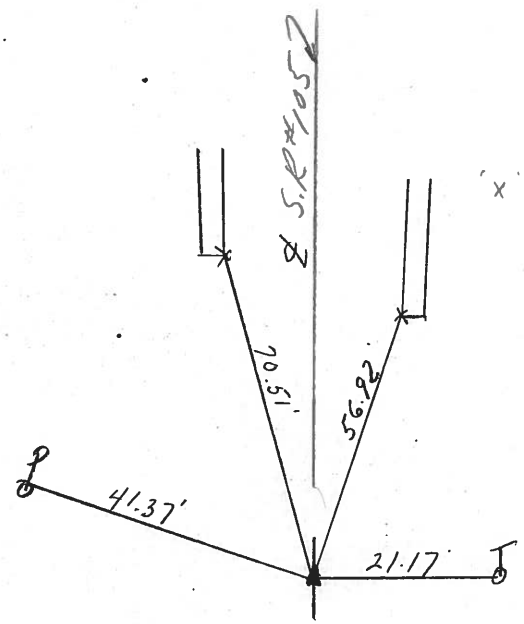
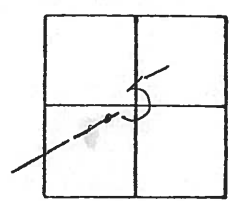
TYPE MONUMENT P.R. & washer

ON SURFACE - BELOW \_\_\_\_\_

LEFT- & PAV'T. - RIGHT 2.5

\_\_\_\_\_ TO \_\_\_\_\_ EDGE PAVEMENT

S.L.M. 556+32± (574 P/len)



x - cut in conn. conc  
bridge rail  
#105-10.55

P.R. at top P.R. below  
P.R. & washer



PERSONNEL TITLE PERSONNEL TITLE

COUNTY Ottawa DATE 6-20-74

S. R. 105 WEATHER Fair

SEC. 5 TEMP. 70°

DESCRIPTION Salem Twp. JOB NO.

