

O.D.O.T. DISTRICT 2 SURVEY OFFICE (USE ONLY)

PERSONNEL \_\_\_\_\_ REFERENCE NO. 130 SHEET 43 OF 43  
 NOTES ASTON DATE 10/23/23 ROUTE SR 105  
 H.C. NIESE WEATHER SUNNY/BREEZY COUNTY OTTAWA  
 R.C. AUBLE TEMP. 82° TOWNSHIP SALEM  
 DWG BY RHOADES PID 102952 SECTION 5  
 T 6 N R 14 E

TYPE MONUMENT MAG/WASHER

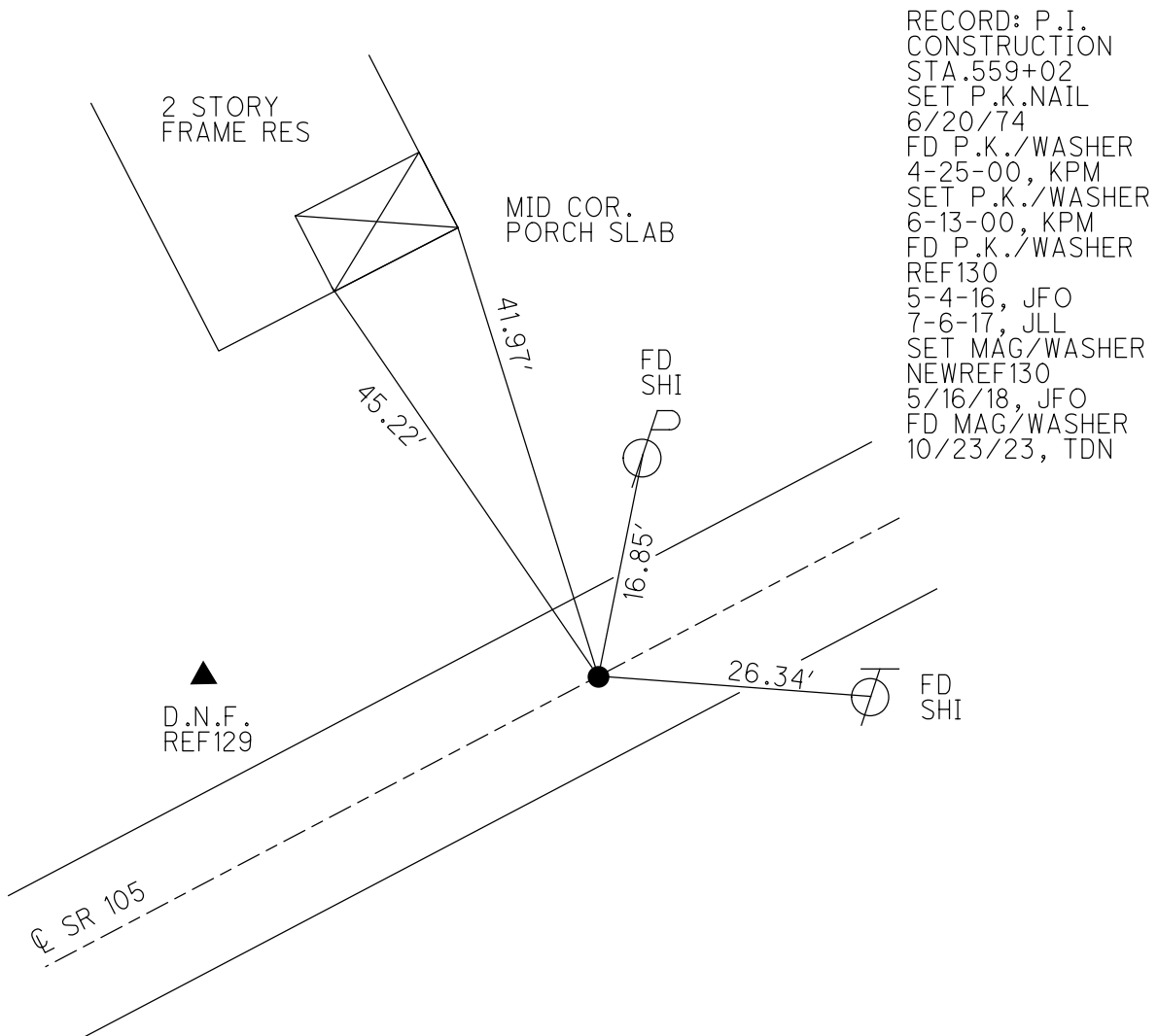
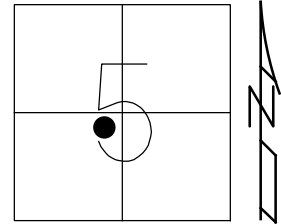
~~ON SURFACE~~ - BELOW ON

OFFSET 6.9' LT : ~~RT~~  
6.2' TO LT EDGE PAVEMENT

STATION: 558+77.83

HORIZ.DATUM: NAD83 2011 GEOID: NAVD88 2012A

GRID: NORTHING: 671638.592 EASTING: 1789173.994



O.D.O.T. DISTRICT 2 SURVEY OFFICE (USE ONLY)

PERSONNEL

REFERENCE NO. 130

SHEET 42 OF 42

NOTES O'DONNELL

DATE 7-6-17

ROUTE SR 105

H.C. LEU

WEATHER CLOUDY

COUNTY OTTAWA

R.C. CARSON

TEMP. 70°

TOWNSHIP SALEM

POORE

SECTION 5

DWG BY JAMES

PID 95757

T 6 N R 14 E

TYPE MONUMENT P.K./WASHER

~~ON SURFACE~~ - BELOW 1.5"

OFFSET  $\odot$  PAVEMENT 6.9' LT : RT

6.2' TO LT EDGE PAVEMENT

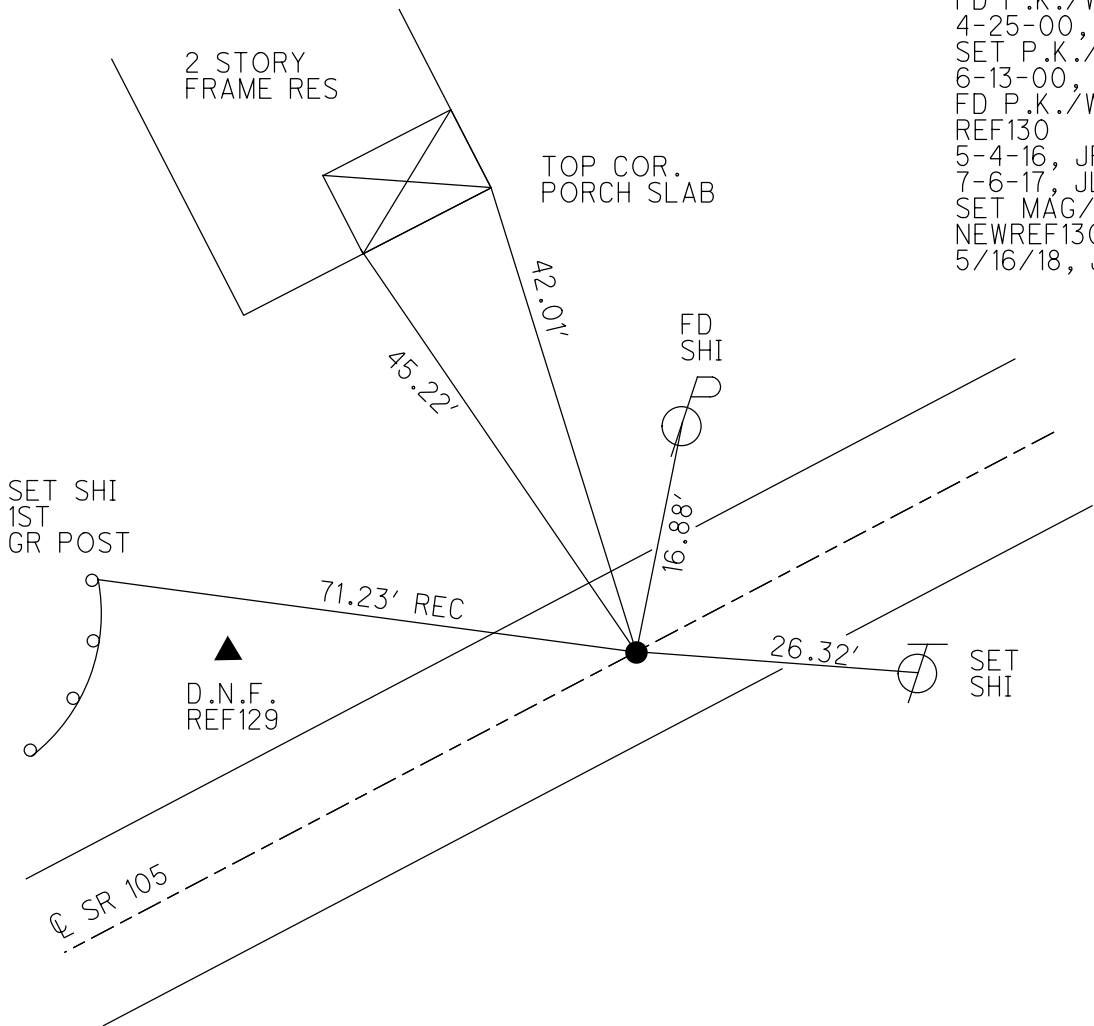
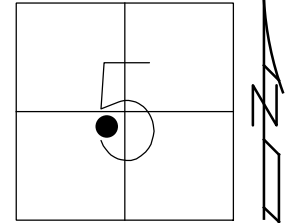
STATION: 558+77.83

HORZ.DATUM: NAD83 2011

GEOID: NAVD88 2012A

GRID: NORTHING: 671638.554

EASTING: 1789174.018

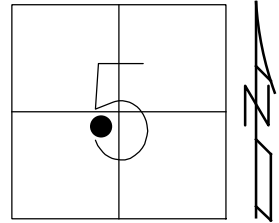


RECORD:  
 FD P.K./WASHER  
 4-25-00, KPM  
 SET P.K./WASHER  
 6-13-00, KPM  
 FD P.K./WASHER  
 REF130  
 5-4-16, JFO  
 7-6-17, JLL  
 SET MAG/WASHER  
 NEWREF130  
 5/16/18, JFO

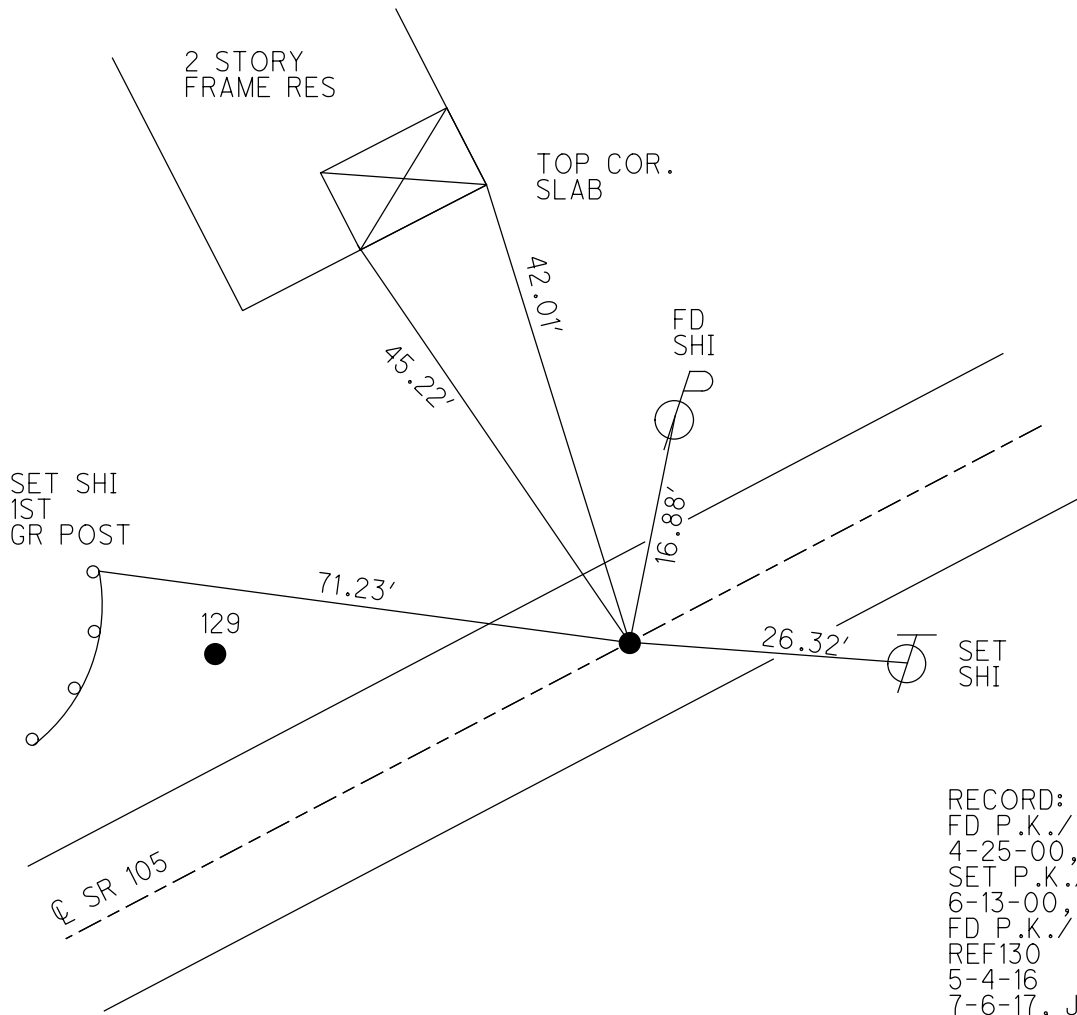
O.D.O.T. DISTRICT 2 SURVEY OFFICE (USE ONLY)

PERSONNEL	REFERENCE NO. <u>130</u>	SHEET <u>3</u> OF <u>3</u>
NOTES <u>O'DONNELL</u>	DATE <u>7-6-17</u>	ROUTE <u>SR 105</u>
H.C. <u>LEU</u>	WEATHER <u>CLOUDY</u>	COUNTY <u>OTTAWA</u>
R.C. <u>CARSON</u>	TEMP. <u>70°</u>	TOWNSHIP <u>SALEM</u>
<u>POORE</u>		SECTION <u>5</u>
DWG BY <u>JAMES</u>	PID <u>95757</u>	T <u>6</u> N R <u>14</u> E

TYPE MONUMENT P.K./WASHER  
~~ON SURFACE~~ - BELOW 1.5"  
 OFFSET  $\text{C}$  PAVEMENT 6.9' LT : ~~RT~~  
6.2' TO LT EDGE PAVEMENT  
 STATION: 560+13



HORZ. DATUM: NAD83 2011 GEOID: NAVD88 2012A  
 GRID: NORTHING: 671638.542 EASTING: 1789174.029



RECORD:  
 FD P.K./WASHER  
 4-25-00, KPM  
 SET P.K./WASHER  
 6-13-00, KPM  
 FD P.K./WASHER  
 REF130  
 5-4-16  
 7-6-17, JLL  
 FD MAG/WASHER  
 7-10-18, JLL

# O.D.O.T. DISTRICT 2 SURVEY OFFICE

PERSONNEL

REFERENCE NO. 129-130 SHEET 96 OF 96

NOTES K. Moser

H.C. Barnhisel

R.C. Canterbury

DATE 4-25-00

WEATHER Sunny / Breezy

TEMP. 40.0° F

*(DRAWN BY: DUAN HODMAN)*

ROUTE 105

COUNTY Ottawa

TOWNSHIP Salem

SECTION 5

T. 6 N. R. 14 E.

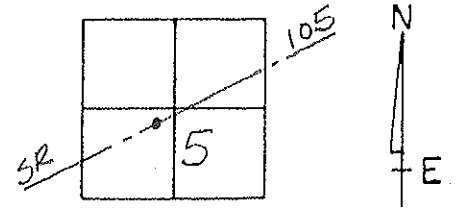
TYPE MONUMENT PK/WASHER

ON SURFACE - BELOW 1 1/2" BELOW

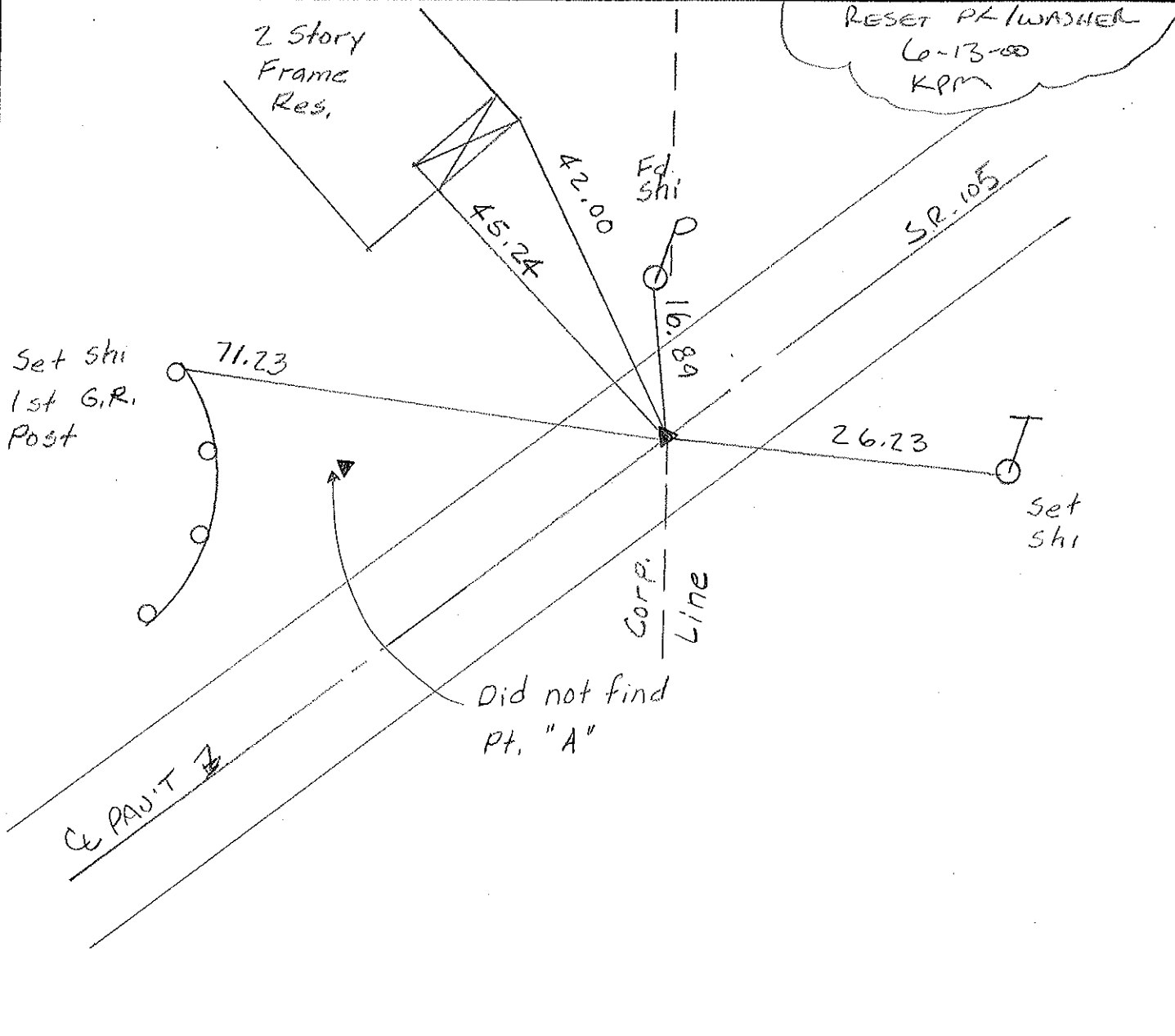
LEFT - ~~C~~ PAV'T. - RIGHT 6.9'

6.2' TO LT. EDGE PAVEMENT

S.L.M. 540 + 13



RESET PK/WASHER  
6-13-00  
KPM



PERSONNEL TITLE PERSONNEL TITLE

COUNTY Ottawa DATE 6-20-74

S. R. 105 WEATHER Fair

SEC. 5 TEMP. 70°

DESCRIPTION Salem Twp. JOB NO.

