

Scanned July 1947

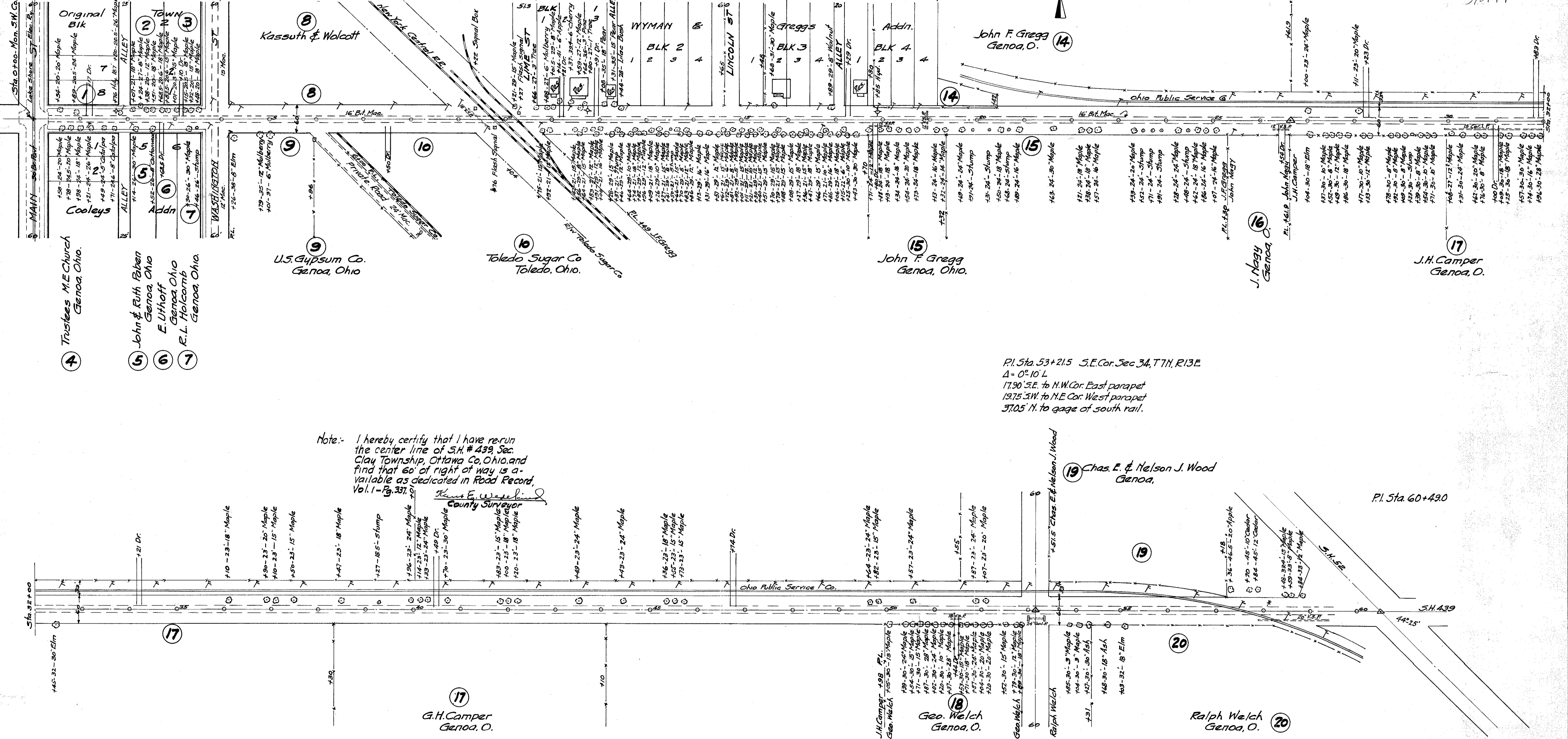
SR-163

OTTAWA COUNTY
S.H. #439 SEC. 34
R/W PLANS

Sta. 0+00 Mon. SW. Cor. Sec. 34, T.1N, R.13E.

P.I. Sta. 26+61.9 - 5/4 Cor. Sec. 34, T.1N, R.13E.
Δ = 0° 18' 2"
References to stone:
4.47 N.E. to nail in 24" Maple.
53.85 N.W. to nail in trolley Pole.
52.10 S.E. to nail in 18" Elm.

R/W ok. as shown
F. J. F.
3/8/44



Note: I hereby certify that I have re-run the center line of S.H. # 439, Sec. 34, T.1N, R.13E, and find that 60' of right of way is available as dedicated in Road Record, Vol. 1 - Pg. 337.

Thomas E. Wessels
County Surveyor

P.I. Sta. 53+21.5 S.E. Cor. Sec. 34, T.1N, R.13E
Δ = 0° 10' 10"
17.90 S.E. to N.W. Cor. East parapet
19.75 S.W. to N.E. Cor. West parapet
37.05 N. to gage of south rail.

P.I. Sta. 60+490

R 4/1/53
3
E-20

E-10