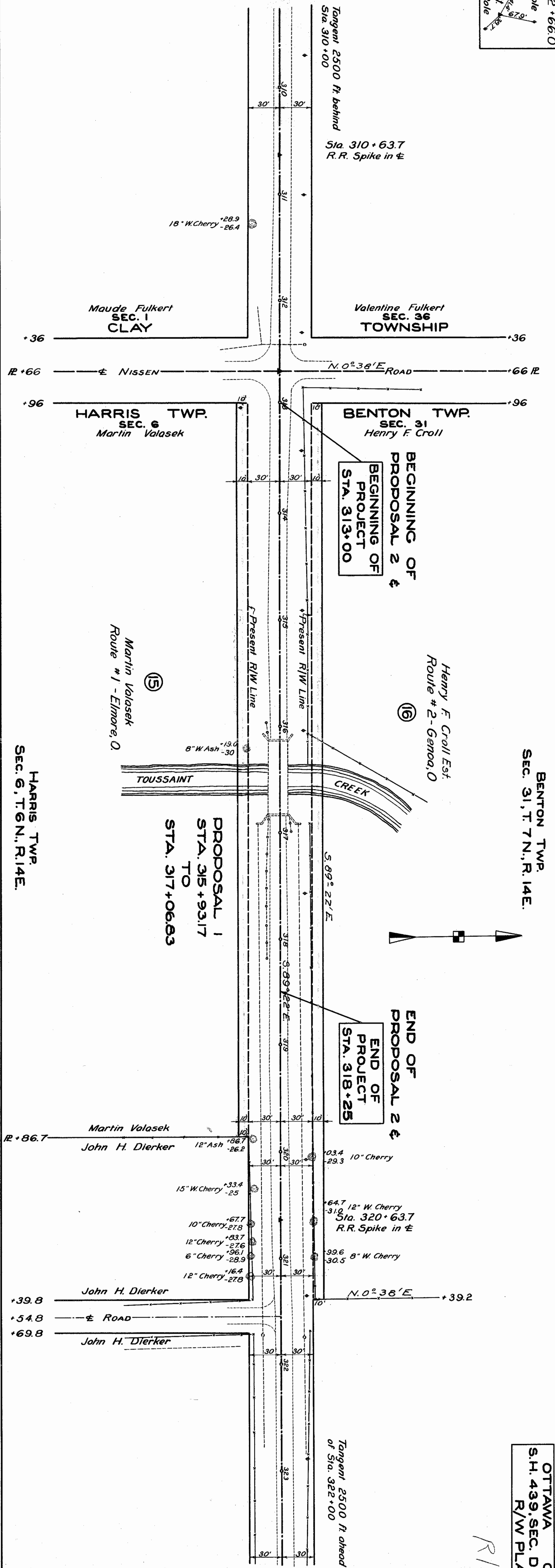


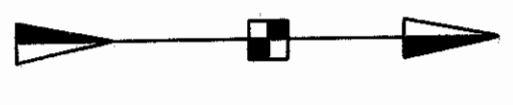
R-4163 #5 E-19

PI. Sta. 312 + 66.0  
Nail in Tel Pole  
L = 0°40' RT  
Nail in Tel Pole



BENTON TWP.  
SEC. 31, T. 7 N., R. 14 E.

HARRIS TWP.  
SEC. 6, T. 6 N., R. 14 E.



OTTAWA COUNTY  
S.H. 439, SEC. D (BRIDGE)  
R/W PLANS

R/W OK  
F.J.F.  
3/8/14

E79