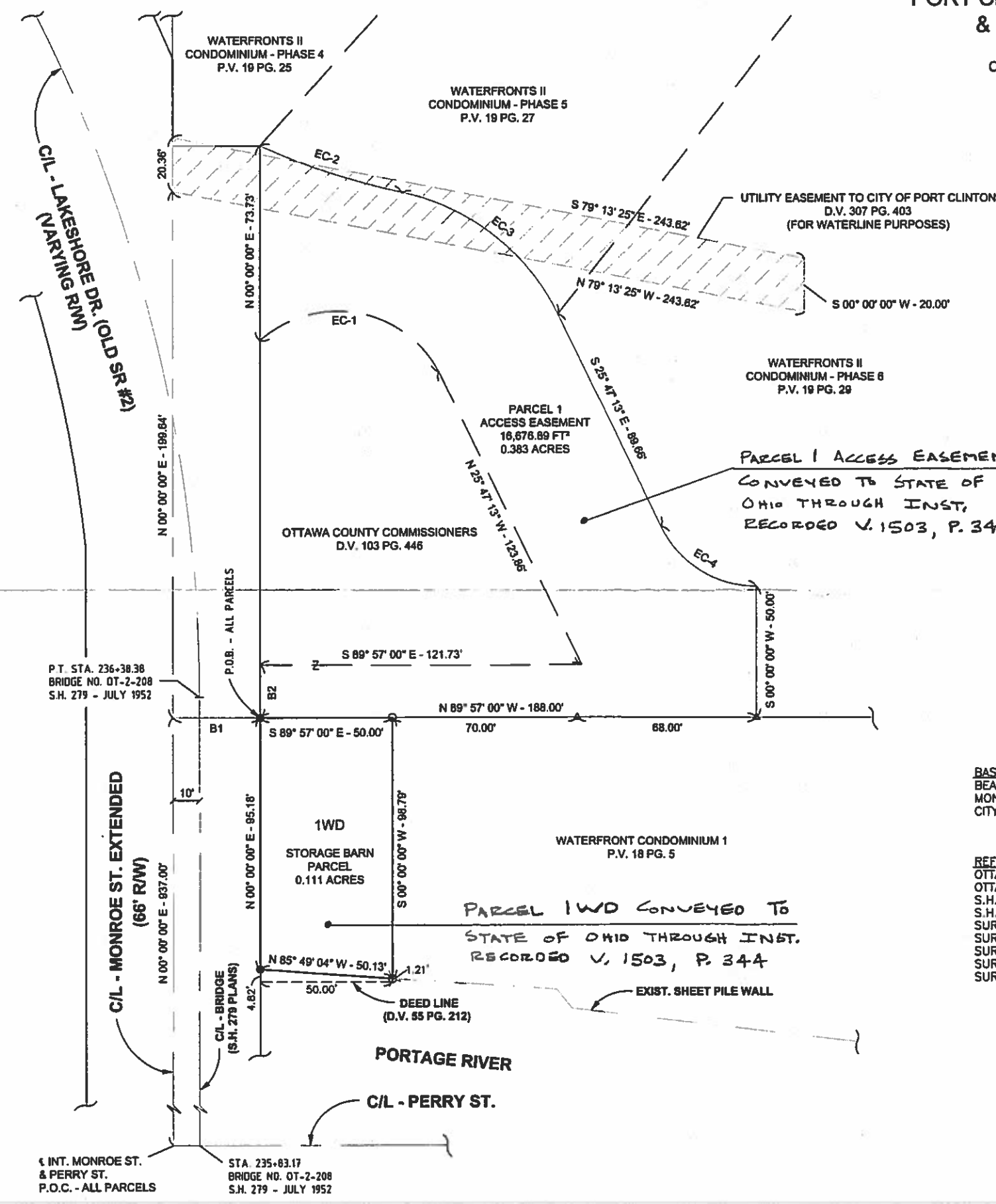


PLAT OF SURVEY:  
**PORT CLINTON LIFT BRIDGE STORAGE BARN  
 & INGRESS / EGRESS EASEMENT**  
 PART OF SECTION 31, T7N R17E,  
 CITY OF PORT CLINTON, OTTAWA COUNTY, OHIO  
 2014



**BEARING TABLE:**

B1: S 89° 57' 00" E - 33.00'  
 B2: N 00° 00' 00" E - 20.00'

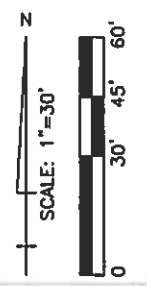
**CURVE DATA:**

<b>EC-1 DATA:</b> R = 43.95' Δ = 103° 11' 04" CB = N 80° 05' 24" W CD = 68.88' L = 79.15'	<b>EC-2 DATA:</b> R = 285.77' Δ = 12° 11' 13" CB = S 71° 50' 41" E CD = 58.42' L = 58.53'
<b>EC-3 DATA:</b> R = 85.00' Δ = 52° 28' 59" CB = S 52° 01' 43" E CD = 75.17' L = 77.88'	<b>EC-4 DATA:</b> R = 40.00' Δ = 64° 21' 27" CB = S 57° 57' 58" E CD = 42.61' L = 44.93'

**BASIS FOR BEARINGS:**  
 BEARINGS ARE BASED ON THE ASSUMPTION THAT THE CENTERLINE OF MONROE STREET, (66' R/W), LYING IN SECTION 31, T7N R17E, CITY OF PORT CLINTON, OTTAWA COUNTY, OHIO, BEARS N 00° 00' 00" E.

**REFERENCES:**  
 OTTAWA COUNTY DEED RECORDS AS SHOWN  
 OTTAWA COUNTY PLAT RECORDS AS SHOWN  
 S.H. 279 SECTION - PORT CLINTON BRIDGE PLANS DATED 1932  
 S.H. 279 SECTION - PORT CLINTON ROAD PLANS DATED 1932  
 SURVEY MADE BY K.E. WEDEKIND DATED JANUARY 1947 (3A-15-59)  
 SURVEY MADE BY C.A. STEVENSON DATED MARCH 1956 (2A-15-13)  
 SURVEY MADE BY J.G. PAPCUN DATED MAY 1965 (4A-15-9)  
 SURVEY MADE BY R.D. BREDBECK DATED APRIL 1970 (4A-15-31)  
 SURVEY MADE BY R.C. STEINMILLER DATED JANUARY 1984 (2-10-59)

- LEGEND**
- = FD. 1" Ø IRON PIN
  - ⊙ = FD. "X" WITH DRILL HOLE
  - △ = FD. RAILROAD SPIKE
  - = SET 1/4" Ø DRILL HOLE



OTTAWA COUNTY  
 ENGINEER

OTTAWA COUNTY  
 ENGINEER'S OFFICE  
 315 MADISON STREET  
 ROOM 106  
 PORT CLINTON, OH 43452  
 (419) 734-6777

PLAT OF SURVEY FOR:  
**LIFT BRIDGE STORAGE BARN  
 & INGRESS / EGRESS EASEMENT**  
 PART OF SECTION 31, T7N R17E,  
 CITY OF PORT CLINTON,  
 OTTAWA COUNTY, OHIO  
 2014



I HEREBY CERTIFY THAT THE ABOVE PLAT IS A TRUE AND CORRECT REPRESENTATION OF A SURVEY OF THE PORT CLINTON LIFT BRIDGE STORAGE BARN AND INGRESS / EGRESS EASEMENT, MADE BY THE OTTAWA COUNTY ENGINEER'S OFFICE IN NOVEMBER 2011, FOR AND AT THE INSTANCE OF THE OHIO DEPARTMENT OF TRANSPORTATION - DISTRICT 2.

DATE: 1-30-14

MICHAEL J. WITTMAN, P.S.#7828  
 CHIEF SURVEYOR

INT. MONROE ST. & PERRY ST.  
 P.O.C. - ALL PARCELS

STA. 235+83.17  
 BRIDGE NO. OT-2-208  
 S.H. 279 - JULY 1952