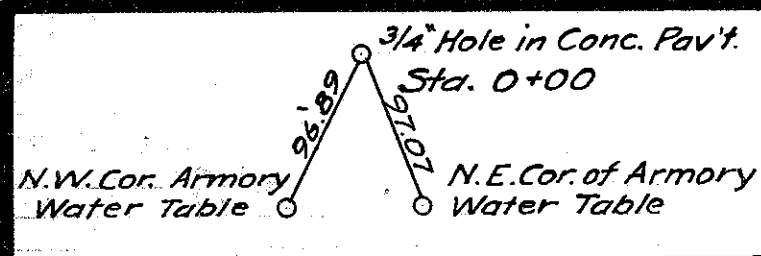


SR-163

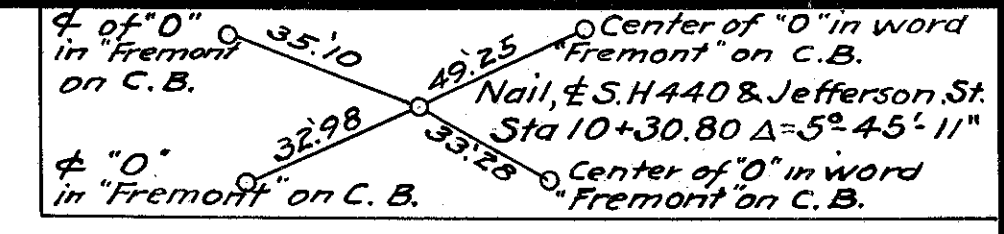
Scanned July 1997



STA. 0+47.4
BEGINNING OF PROJECT
S.H. NO. 279 - SEC. PORT CLINTON PT.

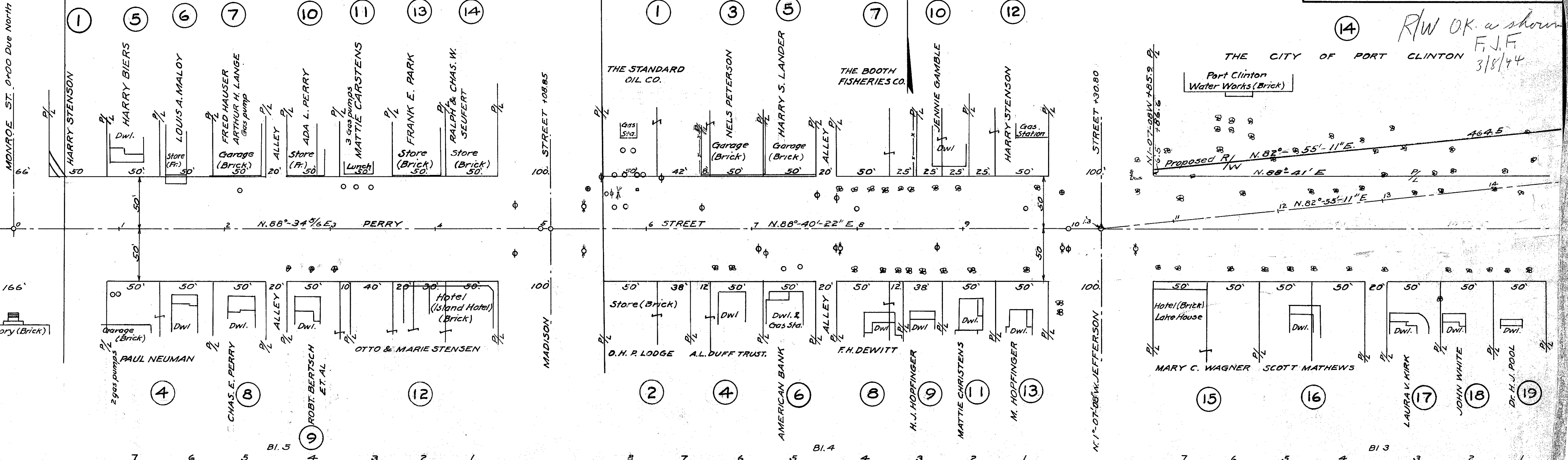
STA. 5+58.85
END S.H. NO. 279
SEC. PORT CLINTON

BEGINNING S.H. NO. 440
SEC. PORT CLINTON

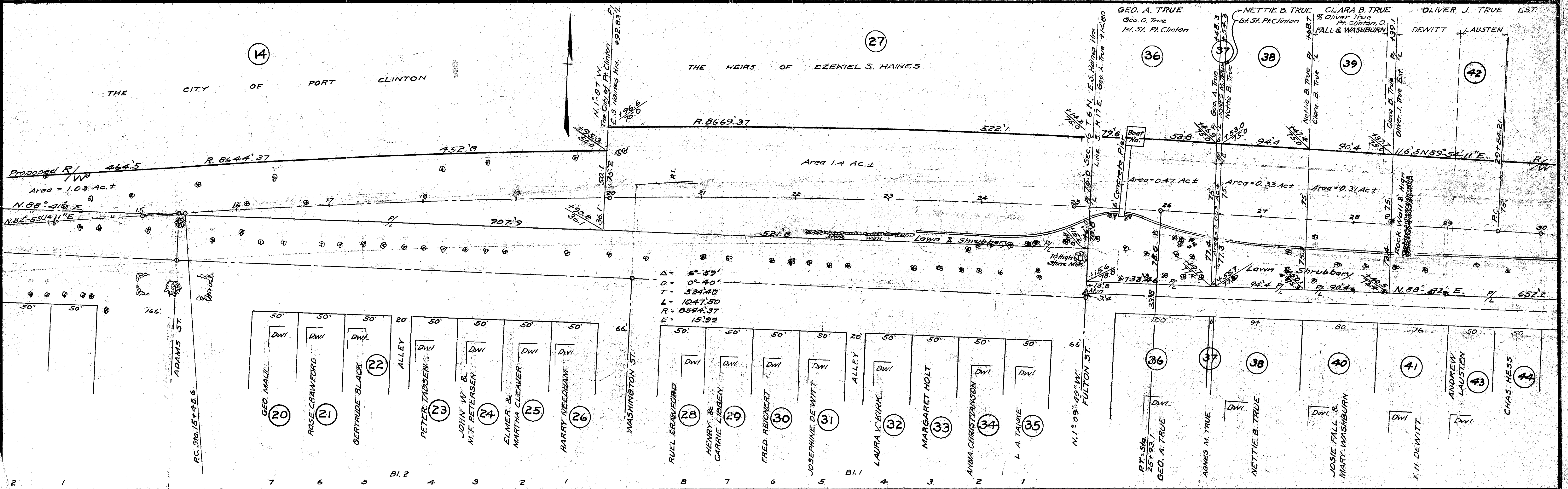


OTTAWA COUNTY
S.H. NO. 279 PORT CLINTON PT.
S.H. NO. 440 PT. CLINTON & H PT.
RIGHT OF WAY PLANS

DATE _____ DRAWN BY A.P.
REVISED _____
LENGTH OF PROJECT _____ MI.



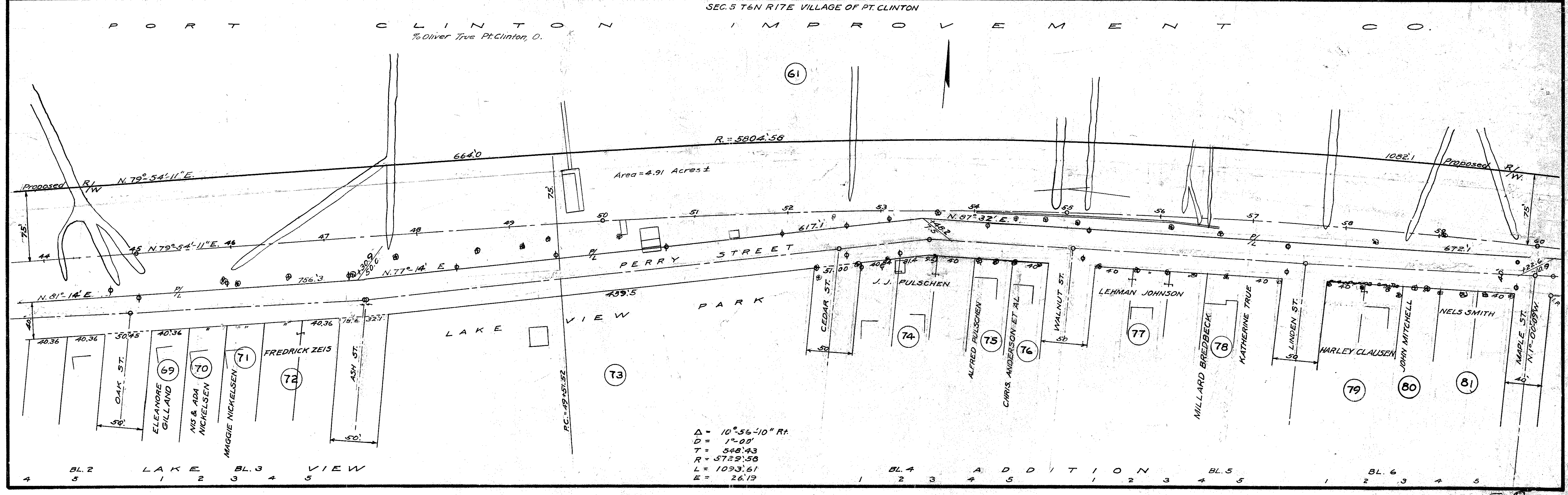
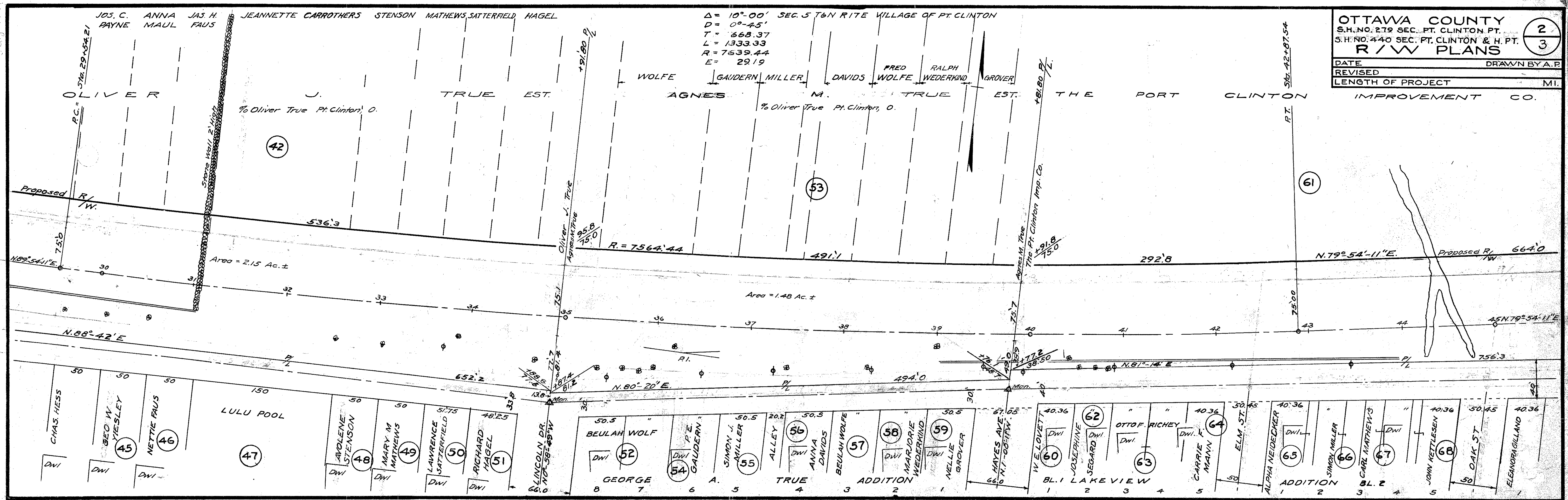
R/W OK as shown
F.J.F.
3/8/44



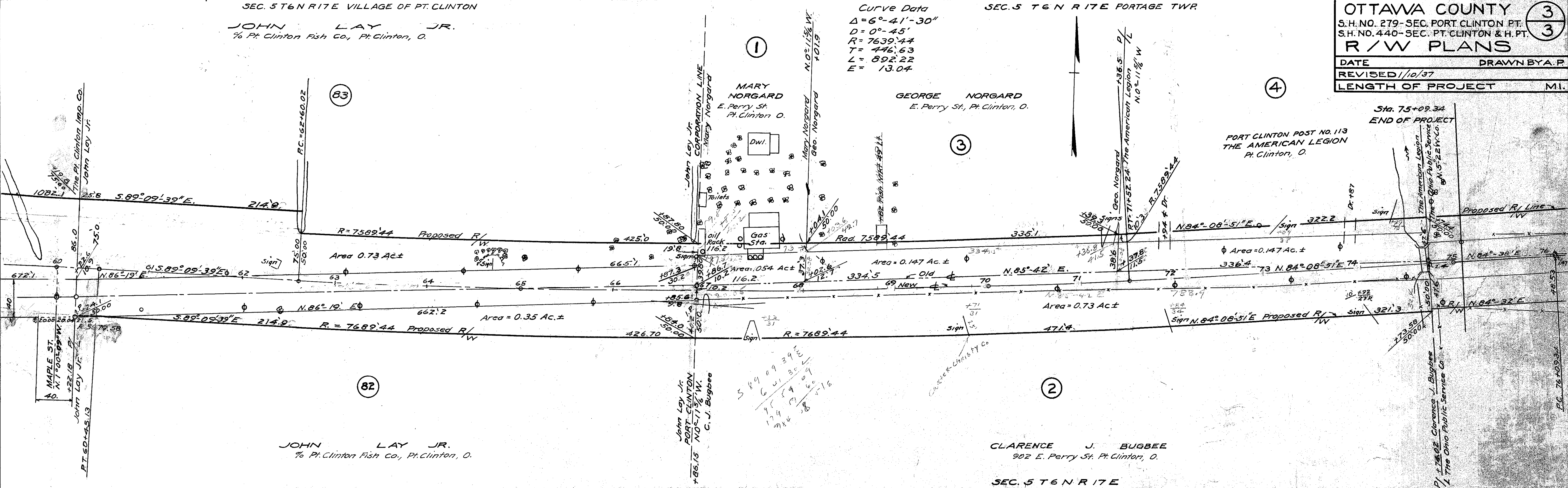
$\Delta = 6^\circ 59'$
 $D = 0^\circ 40'$
 $T = 524.40$
 $L = 1047.50$
 $R = 864.37$
 $E = 15.99$

OTTAWA COUNTY
 S.H. NO. 279 SEC. 5 PT. CLINTON PT.
 S.H. NO. 440 SEC. 5 PT. CLINTON & H. PT.
R/W PLANS

DATE _____ DRAWN BY A.P.
 REVISED _____
 LENGTH OF PROJECT _____ MI.

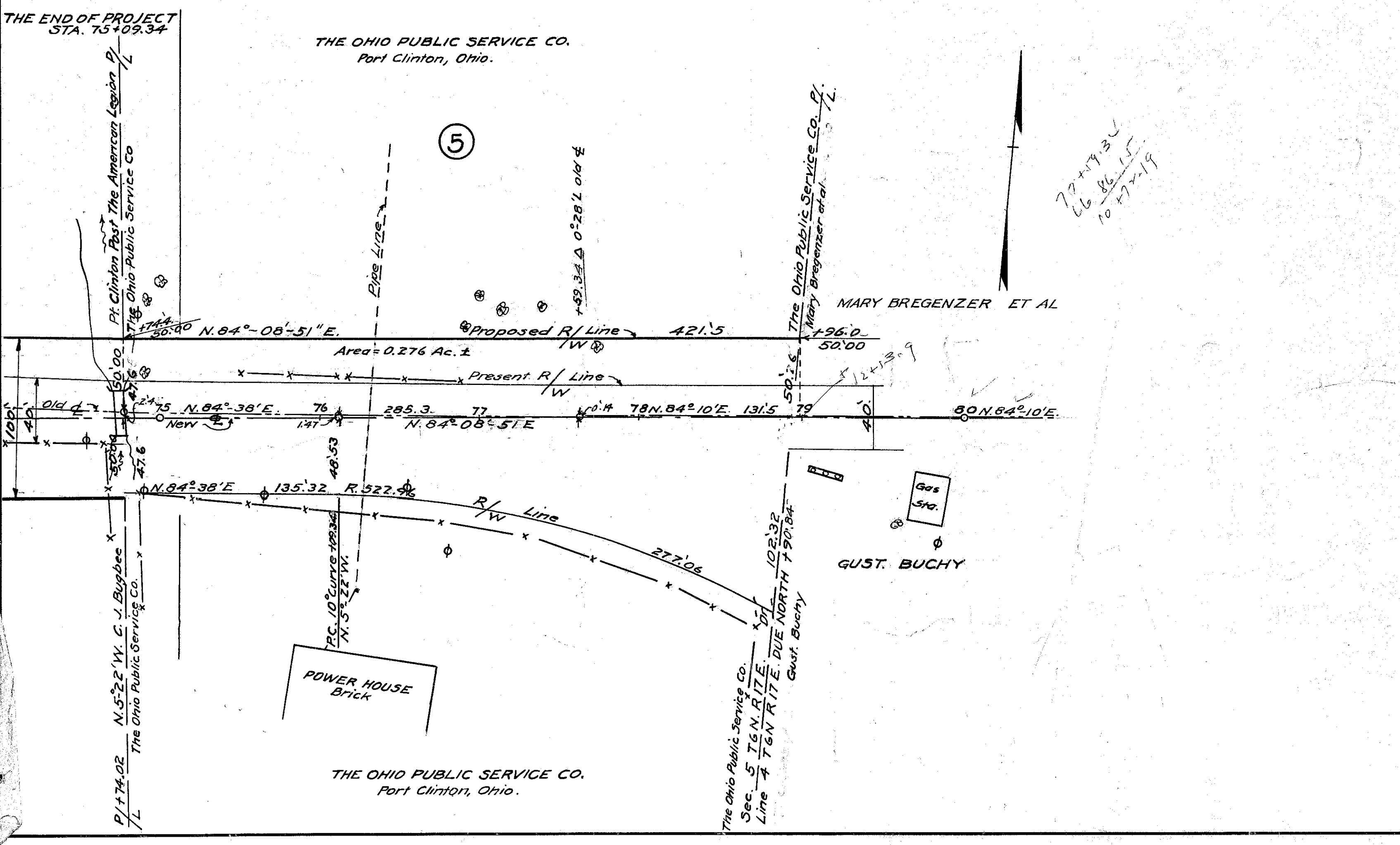


Scanned July 1997



OTTAWA COUNTY
 S.H. NO. 279- SEC. PORT CLINTON PT.
 S.H. NO. 440- SEC. PT. CLINTON & H. PT.
R/W PLANS
 DATE: _____ DRAWN BY: A.P.
 REVISED: 10/37
 LENGTH OF PROJECT: _____ MI.

Curve Data
 $\Delta = 6^{\circ} 41' 30''$
 $D = 0^{\circ} 45'$
 $R = 7639.44$
 $T = 446.63$
 $L = 892.22$
 $E = 13.04$



SCHEDULE OF TREES.
 NOTE: Stationing and Offsets refer to line of survey; see Construction Plans.

STATION	DESCRIPTION	DISPOSAL	STATION	DESCRIPTION	DISPOSAL	STATION	DESCRIPTION	DISPOSAL	STATION	DESCRIPTION	DISPOSAL	STATION	DESCRIPTION	DISPOSAL
6+64.5	14" Walnut 38R	No Work	13+57	15" Ash 2L	Remove	22+15	12" Maple 70R	No Work	33+85	5" Poplar 30R	No Work	57+46	6" Maple 45R	No Work
6+80	8" Maple 38R	"	+70	30" Locust 19L	"	+36	16" " 72R	"	34+69	10" Ash 48R	Remove	7+84	16" " 44	"
7+82	18" " 14	"	+71	12" Ash 40L	No Work	+57	22" " " " "	"	35+04	8" Box Elder 51R	No Work	58+04	12" " 45	"
+95	" " 40R	"	+74	26" Maple 75R	"	23+28	24" " " " "	"	+64	14" Poplar 50R	"	+22	15" " 46	"
+96	8" 38L	"	+92	24" " 77R	"	+56	18" " 71" " "	"	+82	10" Mulberry 53R	"	+31	5" Ash 5	Remove
8+12	" " " "	"	14+00	12" Ash 50L	"	+78	12" " 72" " "	"	+96	6" Maple 48R	"	+50	6" Maple 45R	No Work
+23	18" " 41R	"	+88	22" Locust 1R	Remove	+98	14" " 72" " "	"	36+19	20" Elm 25R	Remove	+89	5" Cherry 45R	"
+26	20" 38L	"	+11	8" Maple 79R	No Work	24+21	15" " " " "	"	37+38	12" Ash 42R	"	+77	18" Elm 40R	"
+37	12" 40R	"	+19	18" Locust 15L	Remove	+63	22" " 68" " "	"	38+27	10" " 39R	No Work	+89	20" " " "	"
+41	16" 38L	"	+31	10" Maple 80R	No Work	+64	16" " 74" " "	"	+99	18" " 16R	Remove	59+04	12" Maple 43	"
+48	15" 40R	"	+32	15" Locust 7R	Remove	+88	6" Evergreen 34R	"	40+41	14" Poplar 26R	No Work	+05	12" Ash 20L	Remove
+51	18" 38L	"	+42	12" Maple 82R	No Work	+94	2" Maple 22R	Remove	+53	8" Catalpa 35R	"	+29	14" Maple 42R	No Work
+62	26" Ash 40R	"	+44	20" Locust 48L	"	25+28	6" Fir 30R	"	+70	4" Maple 36R	"	+53	" 41	"
+74	22" Maple 38L	"	+46	21" 22L	Remove	+39	5" Cedar 8R	"	+85	6" " 34R	"	+80	15" " " "	"
+82	24" Elm 40R	"	+53	24" Hawthorn 10R	"	+44	4" " 7R	"	45+90	12" Ash 36R	"	62+38	" 21	"
+96	26" Maple 38L	"	+90	15" Elm 24L	No Work	+44	" 11R	"	46+05	14" " 39R	"	64+40	2" Cedar 37L	Remove
9+06	24" Maple 40R	"	15+05	12" Maple 14R	Remove	+52	30" Sycamore 75R	No Work	+61	8" Elm 38R	"	+75	" 39L	"
+35	" " " "	"	+64	15" Elm 31L	Protect	47+28	8" Ash 38R	Remove	47+28	8" Ash 38R	Remove	65+00	10" Elm 35L	No Work
+70	30" Elm 38L	"	+75	15" Maple 30R	Remove	+57	" 12R	"	+77	10" " 23R	"	196	14" " 46L	"
10+70	30" Ash 33L	"	+16+04	20" " 23R	"	+62	6" " 8R	"	48+65	12" Poplar	"	66+00	" 54L	"
+72	12" Maple 61L	"	+11	22" " 7L	"	+62	18" Maple 44R	No Work	49+12	12" Maple 22	"	+37	24" Poplar 36L	"
+80	48" Cottonwood 43R	"	+24	20" " 34R	No Work	+81	62" Willow 70R	"	+41	14" " 12	"	+55	10" Elm 46L	"
11+00	40" " 44R	"	+40	18" " 33L	Protect	+92	12" Maple 46R	"	+50+18	34" Poplar 13	"	+60	" 54L	"
+01	18" Walnut 67L	"	+46	" 36R	"	26+00	22" Willow 62R	"	52+31	15" Maple 60	No Work	+72	16" " 55L	"
+08	10" Catalpa 21L	Remove	+76	4" Elm 44	Remove	+10	8" Maple 28R	"	+50	12" Ash 40L	Remove	+99	8" " " "	"
+49	36" Cottonwood 50R	No Work	+90	27" Maple 40R	No Work	+19	36" Willow 72R	"	+75	14" Maple 47R	No Work	74+80	10" Elm 29	Remove
+51	12" Maple 63L	"	17+13	20" " 42R	"	+26	18" Maple 48R	"	53+08	15" " 43	"	76+91	6" Cottonwood 55L	No Work
+69	6" Locust 19L	Remove	+35	22" " 43R	"	+39	40" Willow 62R	"	+56	18" " 38	"	77+02	20" 75L	"
+82	40" Poplar 54R	No Work	+58	24" " 45R	"	+54	4" Catalpa 54R	"	+61	5" Ash 10L	Remove	+13	30" " 66L	"
12+00	18" Maple 49L	"	+79	18" " 48R	Remove	+74	18" Elm 68R	"	54+06	8" Maple 40R	No Work	+39	30" Poplar 49L	"
+05	42" 56R	"	+99	20" " 48R	No Work	27+29	10" Catalpa 36R	"	+25	12" " " "	"	+74	6" Ash 43L	"
+22	10" 55R	"	18+22	20" " 50R	"	+32	18" Locust 65R	"	+44	20" " " "	"			
+28	30" 58R	"	+22	4" Sycamore 34R	Remove	+50	3" Willow 12R	Remove	+45	12" Ash 7L	Remove			
+33	22" Elm 14L	Remove	+46	70" Maple 52R	No Work	+60	36" " 66R	No Work	+71	15" Maple 42R	No Work			
+37	15" Locust 64L	No Work	+66	14" Maple 53R	"	+85	2" Maple 47R	"	+76	18" Ash 7L	Remove			
+58	10" Maple 12L	Remove	+71	2" " 41L	"	28+05	36" Poplar 74R	"	55+10	" 4L	"			
+62	18" Elm 62R	No Work	+88	20" " 54R	"	+88	20" " 54R	"	+37	22" Maple 42R	No Work			
+82	15" Maple 12L	Remove	19+53	22" " 58R	"	+37	22" " 58R	"	+58	20" " 43R	"			
+87	24" Ironwood 57L	No Work	+62	4" Elm 43L	"	+41	60" Willow 3L	Remove	+77	" 44	"			
+97	22" Maple 66R	"	+98	18" Maple 61R	"	+46	2" Maple 45R	No Work	+79	2" Cedar 56	"			
+98	22" Willow 46L	"	20+08	2" Walnut 43L	"	+77	1/2" " 44R	"	+89	" " " "	"			
+05	12" Ash 22L	Remove	+14	" 45L	"	+87	36" Poplar 71R	"	56+12	24" Willow 4L	Remove			
+16	8" Elm 66L	No Work	+42	24" Maple 63R	"	29+04	40" " " "	"	+12	12" Maple 45R	No Work			
+26	18" Ash 46L	"	21+00	16" " 67R	"	+31	20" Maple 38R	"	+39	18" " " "	"			
+32	24" Elm 2L	Remove	+28	24" " 68R	"	+66	4" Ash 43R	"	+65	14" " 2L	Remove			
+52	24" Locust 18L	"	+75	18" " 69R	"	+74	" 45R	No Work						
+54	24" Maple 73R	No Work	+97	21" " 68R	"	+86	Spruce 58R	"						