

IMPROVEMENT OF OTTAWA COUNTY ROAD NO. 135 (BAYSHORE ROAD) DANBURY TOWNSHIP OTTAWA COUNTY OHIO 1976

INDEX OF SHEETS

Title Sheet	1
Centerline Plat	2
Typical Sections	3&4
General Notes	5
Schedules and General Summary	6-9
Plan & Profile	10-21
Cross Sections	22-34
Intersection, Drive & Miscellaneous Details	35&36
Structural Drawings	37&38

CONVENTIONAL SIGNS

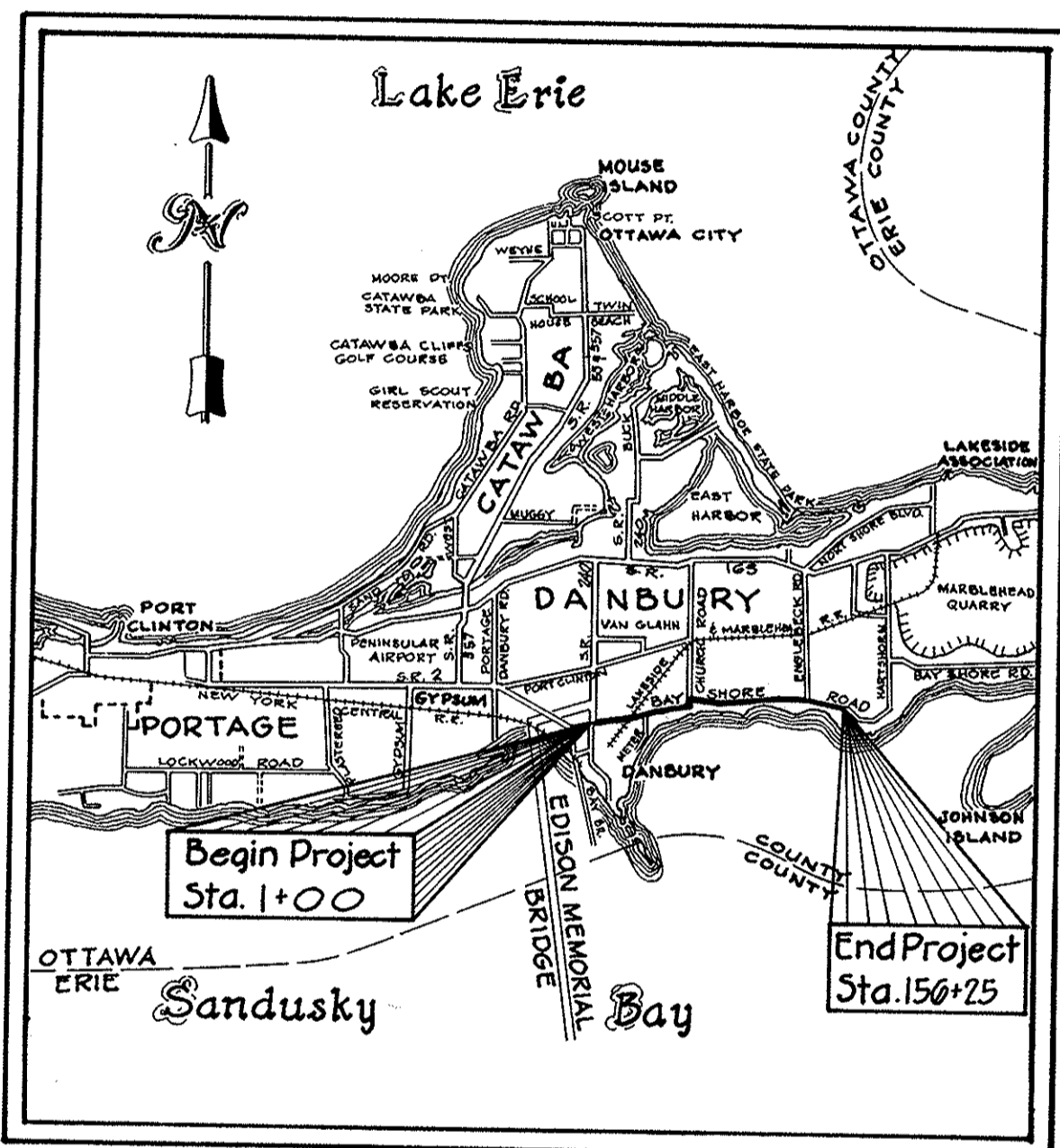
Centerline	
Fence Line	
Existing Utilities	indicate
Pole Lines	telephone ♂ . . . power ♂
Trees & Stumps	⊗ . . . to be removed ⊗
Existing R/W	

LINE DATA

Begin Project _____ Sta 1+00
 End Project _____ Sta 156+25
 Gross Length of Project _____ 15525.00 Lin. Ft.

Deduct for Station Equations _____ 149.97 Lin. Ft.
 Deduct for Railroad _____ 12.88 Lin. Ft.
 Deduct for Bridge _____ 33.00 Lin. Ft.

NET LENGTH OF PROJECT _____ 15,329.15 Lin. Ft. or 2.903 Miles



LOCATION MAP

SCALES

PLAN _____ 1" = 50'
 PROFILE, Horizontal _____ 1" = 50'
 PROFILE, Vertical _____ 1" = 5'
 CROSS SECTIONS, Horizontal _____ 1" = 5'
 CROSS SECTIONS, Vertical _____ 1" = 5'

NOTE

ALL WORK shall conform to the State of Ohio, Department of Highways, Construction and Material Specifications Jan 1st 1975, AND Supplements thereto in effect 14 calendar days prior to the receiving of bids and to these plans.

APPROVALS

WE hereby approve these plans and declare that the making of this improvement will not necessitate the closing of C.R. 135 during construction. WE certify that all necessary Right-of-Way is available.

Approved Walter R. Johnson
 Date 10/12/69 County Commissioner

Approved Donald D. Dorman
 Date 10/12/69 County Commissioner

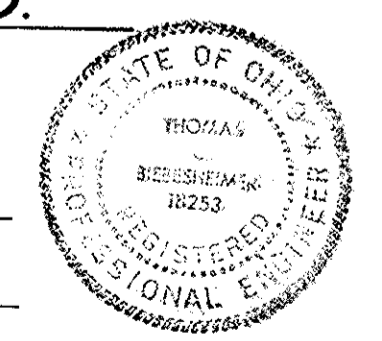
Approved Walter E. Mitchell
 Date 12 Oct 1969 County Commissioner

Approved John H. Papcun
 Date 10/13/69 County Engineer

prepared by

**T. C. BIEBESHEIMER
ENGINEERING CO.
TOLEDO, OHIO**

by: T.C. Biebesheimer
 date: Jan. 1970

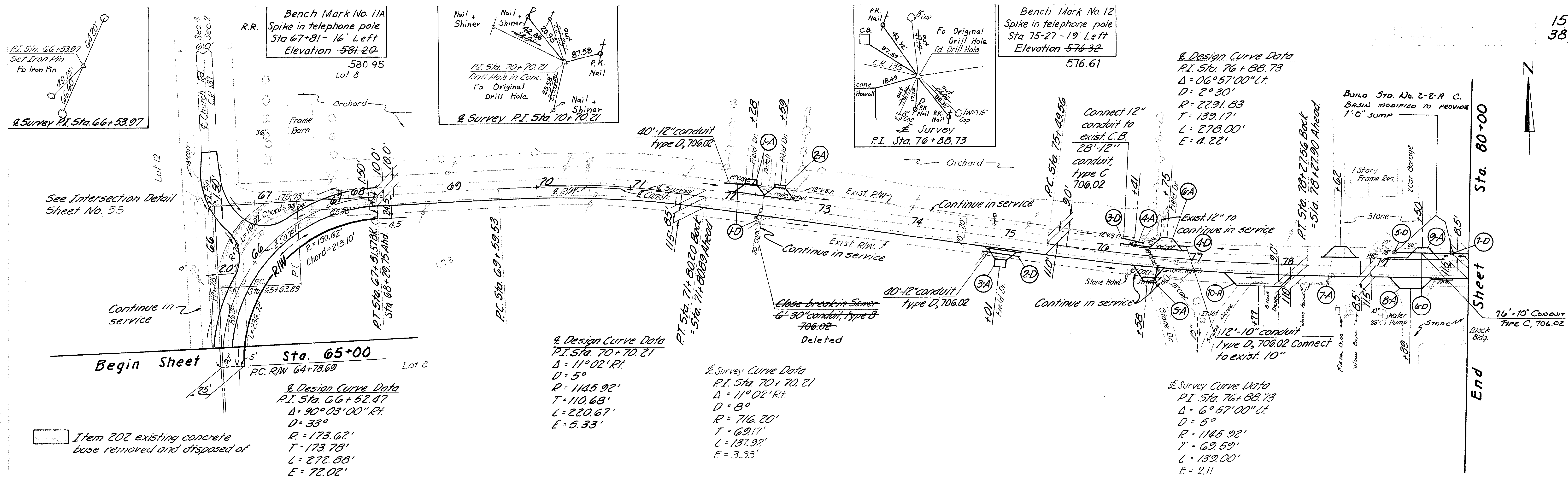


NOTE: SEE ATTACHED PAPER COPY FOR FINAL REVISIONS AND "AS BUILT" DETAILS.
 Also see extra work order in file No. 633 (1974)
 Revised from paper copy by S.M. 12/14/79

SUPPLEMENTAL PRINTS OF STANDARD CONSTRUCTION DRAWINGS					
DRAWING NO.	DATE	DRAWING NO.	DATE	DRAWING NO.	DATE
BP-5	6-1-65	CB-2-2A & B	6-1-65		
HW-E	6-1-65			GR-2A	1-1-67
HW-D	6-1-65	MC-3	6-20-69		
		MC-4	6-13-69		

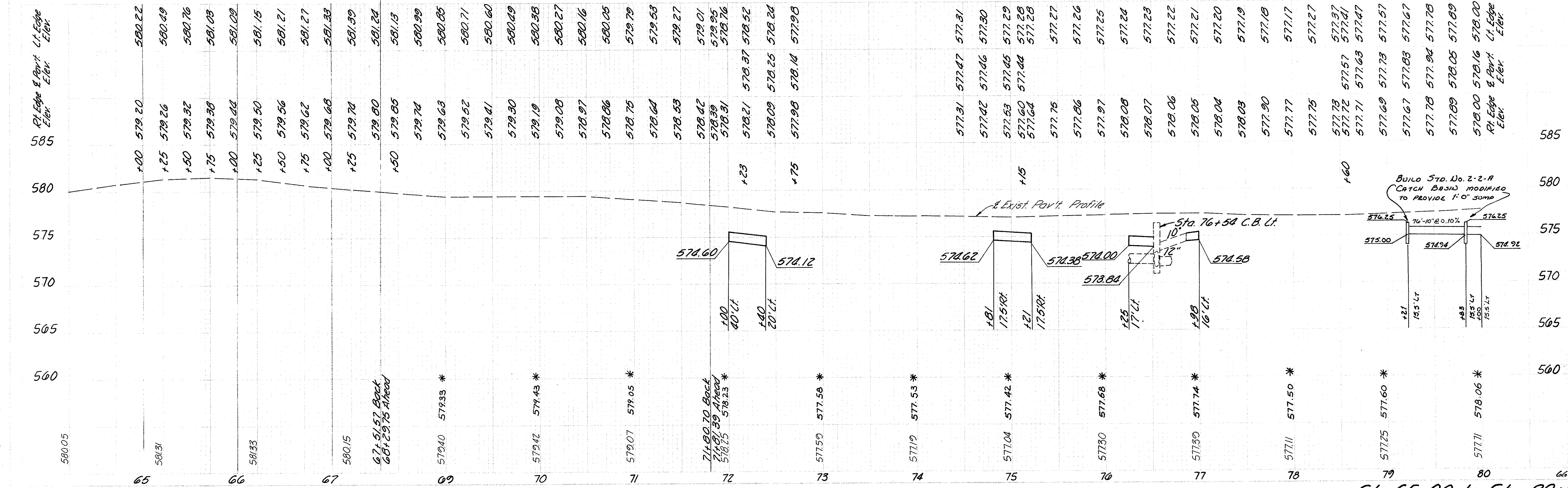
FILE NO.	OTTAWA COUNTY Date of Letting: _____ Contract No. _____
----------	---

EXISTING	DESIGN
CONTS. LIMITS CHECKED ALPHABETICALLY CHECKED GEOMETRICS CHECKED DRAINAGE CHECKED CONST. LIMITS CHECKED CONTS. LIMITS PLOTTED	CONTS. LIMITS CHECKED ALPHABETICALLY CHECKED GEOMETRICS CHECKED DRAINAGE CHECKED CONST. LIMITS CHECKED CONTS. LIMITS PLOTTED



BAY SHORE RD. C.R. 135

PROFILE	DESIGN
MASS CHECKED STRUCK AND PLOTTED SURVEYORS CHECKED INSTRUMENTS CHECKED INSTRUMENTS PLOTTED	MASS CHECKED STRUCK AND PLOTTED SURVEYORS CHECKED INSTRUMENTS CHECKED INSTRUMENTS PLOTTED



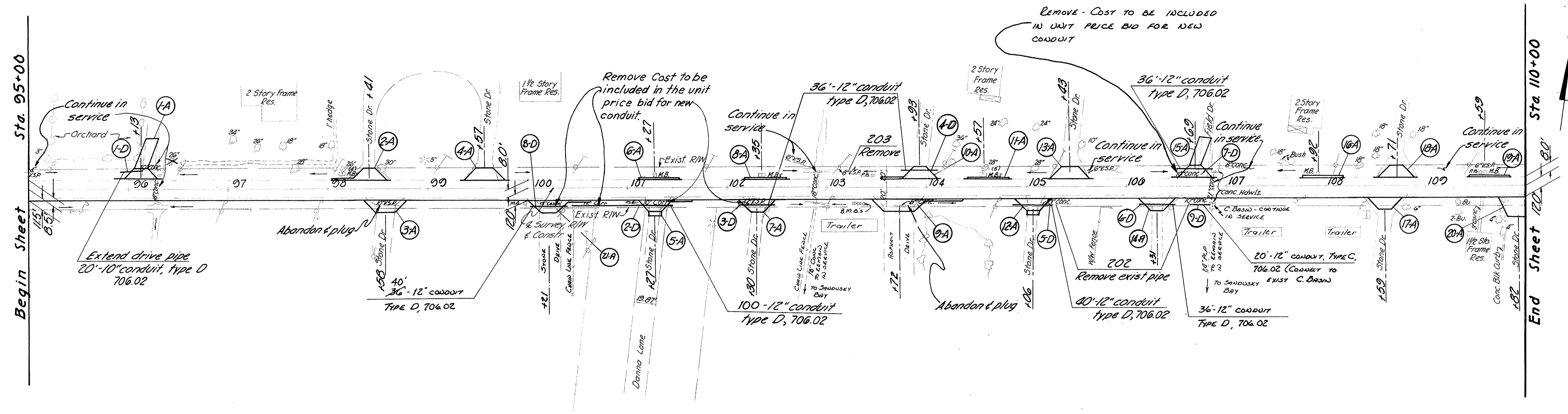
Sta. 65+00 to Sta. 80+00

PLAN	DATE	BY	CHKD.	DATE	BY	CHKD.
ALIGNMENT PLOTTED						
CONTOUR PLOTTED						
GEOMETRICS PLOTTED						
DRAINAGE PLOTTED						
CONST. LIMITS PLOTTED						

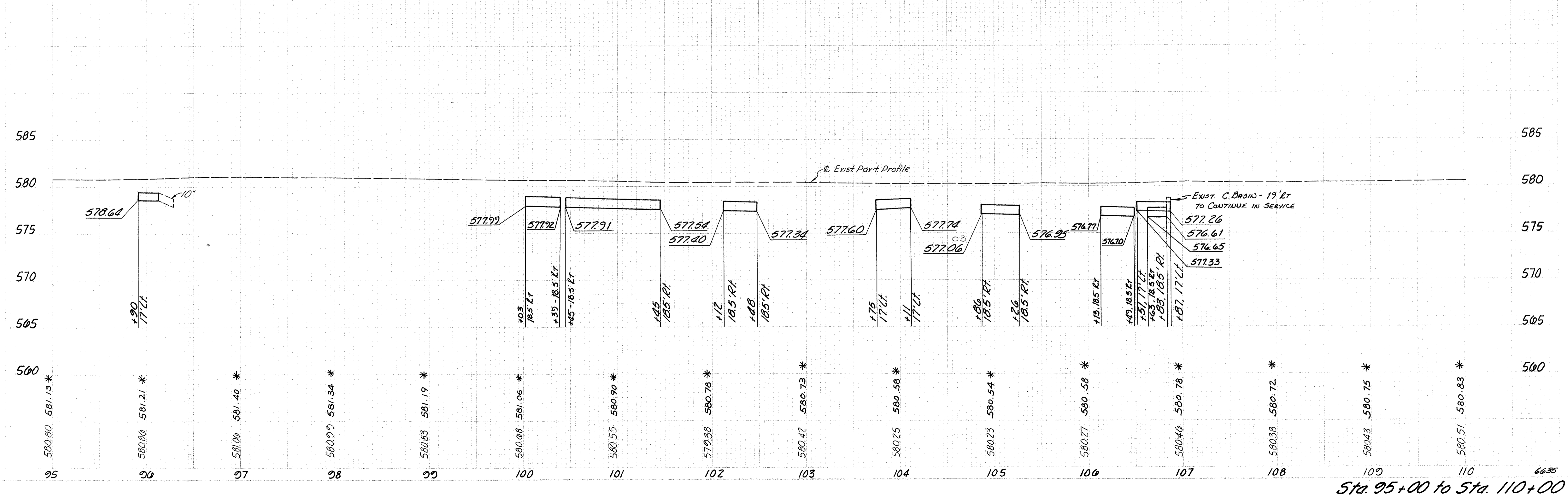
PROFILE	DATE	BY	CHKD.	DATE	BY	CHKD.
ALIGNMENT PLOTTED						
CONTOUR PLOTTED						
GEOMETRICS PLOTTED						
DRAINAGE PLOTTED						
CONST. LIMITS PLOTTED						

Bench Mark No. 15
 R.R. Spike in power pole
 Sta. 100+36 - 20' Right
 Elevation ~~579.99~~
 580.38

Bench Mark No. 16
 Spike in power pole
 Sta. 108+35 - 20' Right
 Elevation ~~579.90~~
 580.12



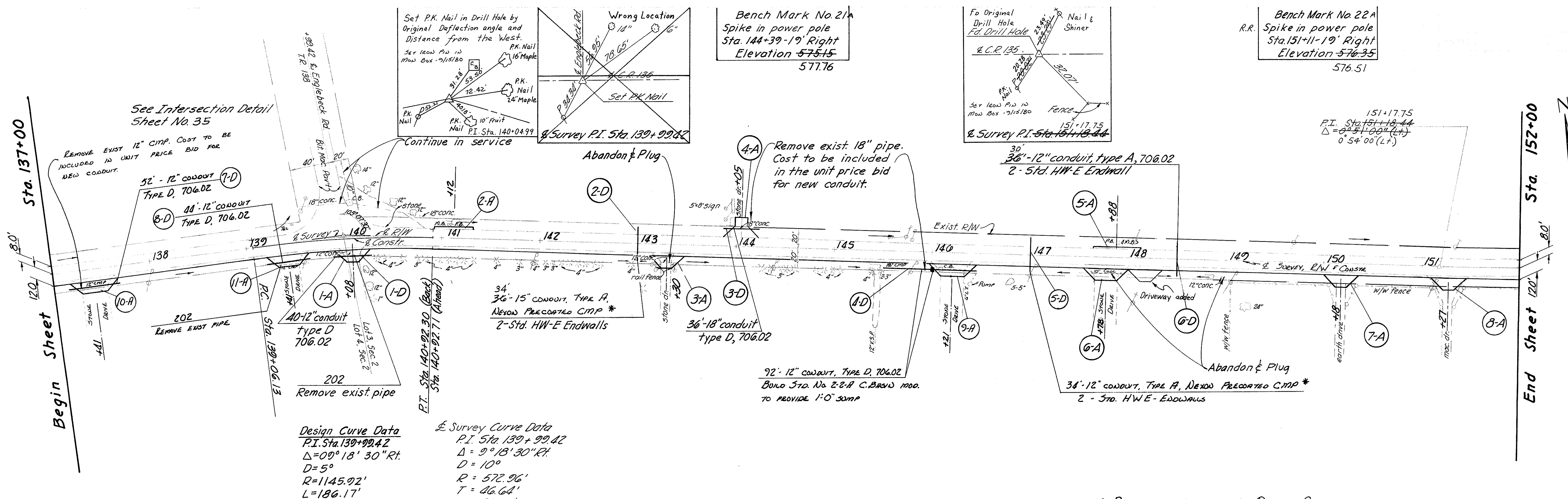
BAY SHORE RD. C.R. 135



Sta. 95+00 to Sta. 110+00

DATE	BY	REVISION

DATE	BY	REVISION

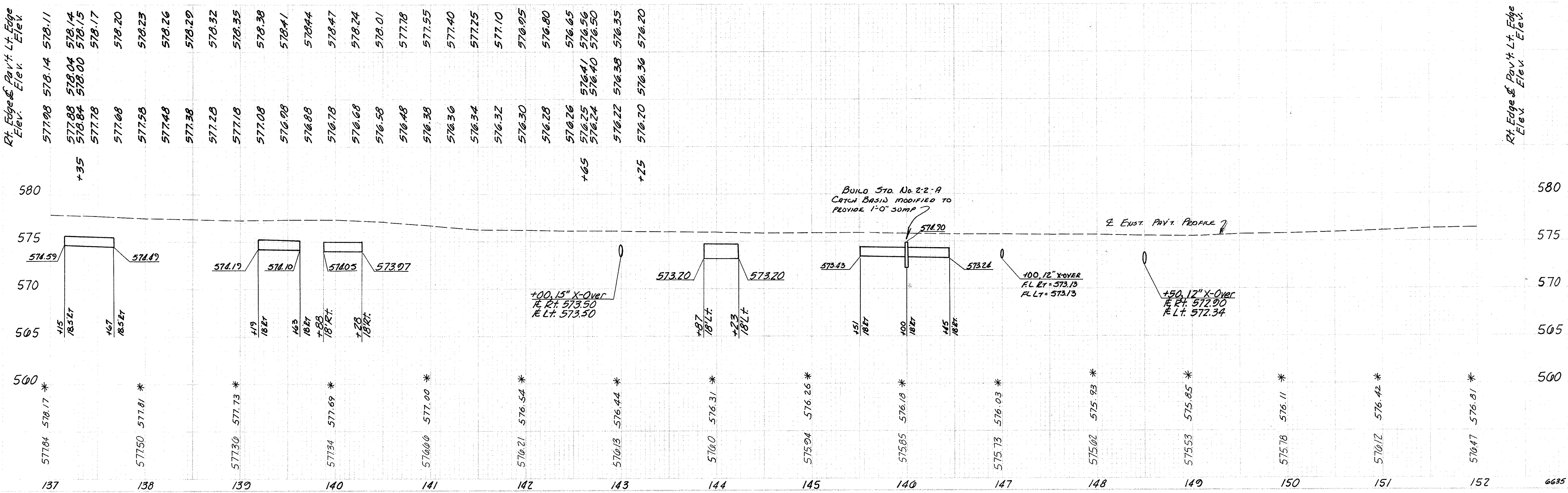


Design Curve Data
 P.I. Sta. 139+99.42
 $\Delta = 09^\circ 18' 30''$ Rt.
 $D = 5^\circ$
 $R = 1145.92'$
 $L = 186.17'$
 $T = 93.20'$
 $E = 3.79'$

Survey Curve Data
 P.I. Sta. 139+99.42
 $\Delta = 9^\circ 18' 30''$ Rt.
 $D = 10^\circ$
 $R = 572.96'$
 $L = 46.64'$
 $T = 93.08'$
 $E = 1.90'$

BAY SHORE RD. C.R. 135

* PIPE TO BE SUPPLIED BY OTTAWA COUNTY



Sta. 137+00 to Sta. 152+00

