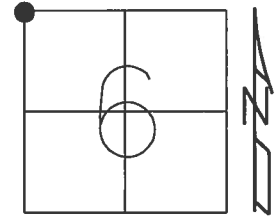


**O.D.O.T. DISTRICT 2 SURVEY OFFICE (USE ONLY)**

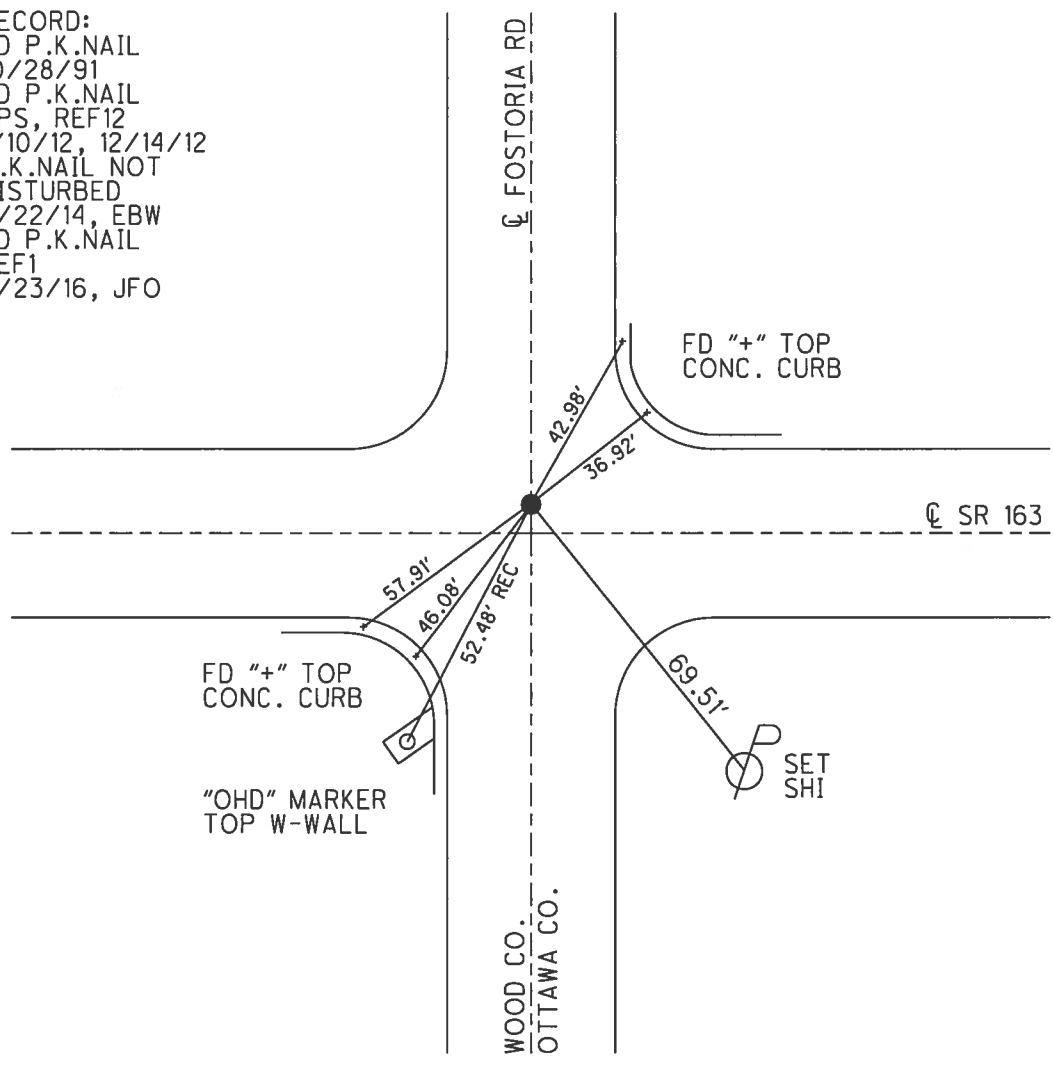
PERSONNEL \_\_\_\_\_ REFERENCE NO. 1 SHEET 1 OF 23  
 NOTES CARSON DATE 5/22/17 ROUTE SR 163  
 H.C. O'DONNELL WEATHER FAIR COUNTY OTTAWA  
 R.C. POORE TEMP. 55° TOWNSHIP CLAY  
 \_\_\_\_\_ SECTION 6  
 \_\_\_\_\_ T 6 N R 13 E

TYPE MONUMENT P.K.NAIL  
 ON SURFACE - ~~BELOW~~ ON \_\_\_\_\_  
 LEFT - ☒ PAV'T - ~~RIGHT~~ 4.2'  
8.0' TO LT EDGE PAVEMENT  
 S.L.M. 0+00



Grid: Northing: 674719.245 Easting: 1718034.137

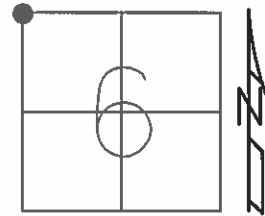
RECORD:  
 FD P.K.NAIL  
 10/28/91  
 FD P.K.NAIL  
 GPS, REF12  
 1/10/12, 12/14/12  
 P.K.NAIL NOT  
 DISTURBED  
 8/22/14, EBW  
 FD P.K.NAIL  
 REF1  
 5/23/16, JFO



O.D.O.T. DISTRICT 2 SURVEY OFFICE (USE ONLY)

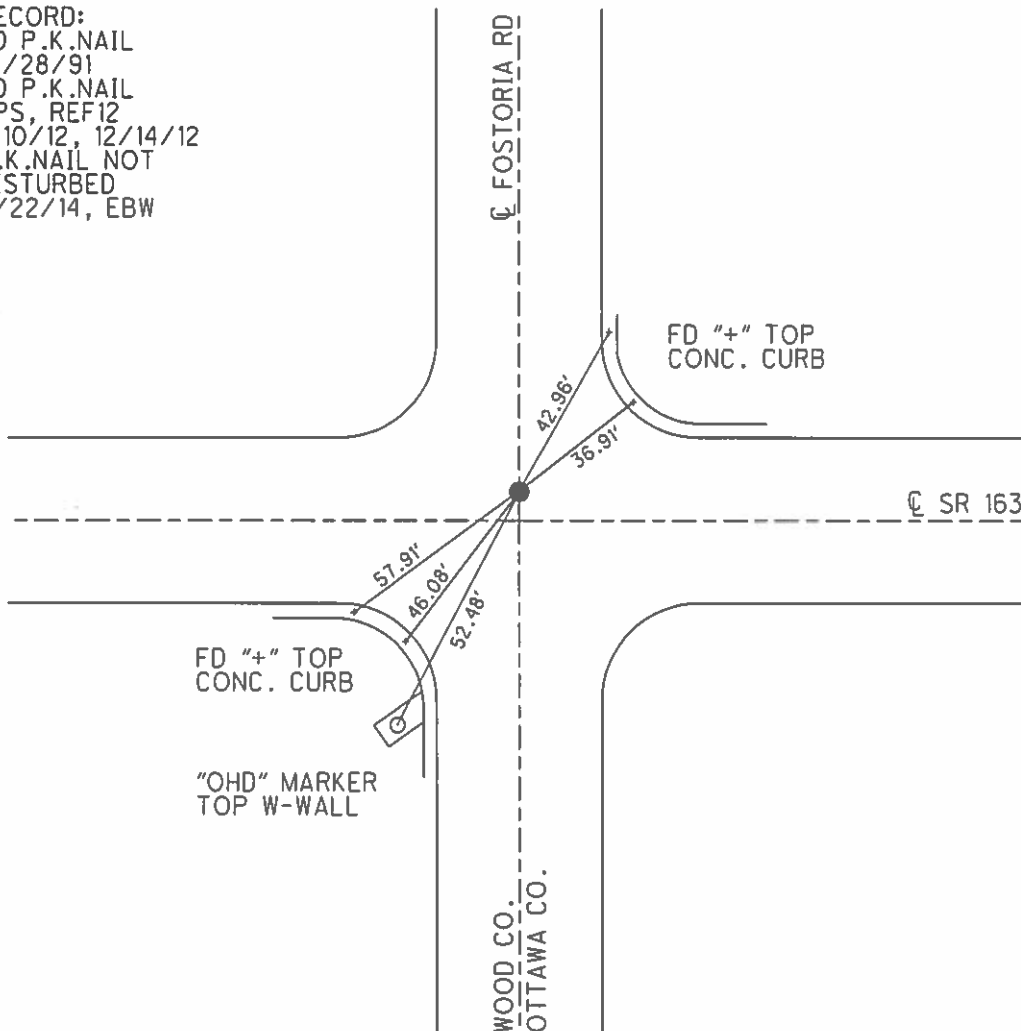
PERSONNEL	REFERENCE NO.	<u>1</u>	SHEET	<u>1</u>	OF	<u>23</u>
NOTES	<u>ROUSOS</u>	DATE	<u>7/3/13</u>	ROUTE	<u>SR 163</u>	
H.C.	<u>WESTFALL</u>	WEATHER	<u>SUNNY</u>	COUNTY	<u>OTTAWA</u>	
R.C.	<u>ROUSOS</u>	TEMP.	<u>80°</u>	TOWNSHIP	<u>CLAY</u>	
				SECTION	<u>6</u>	
				T	<u>6</u>	N
				R	<u>13</u>	E

TYPE MONUMENT P.K.NAIL  
 ON SURFACE - ~~BELOW~~ ON \_\_\_\_\_  
 LEFT - ☉ PAV'T - ~~RIGHT~~ 3.6'  
 - TO - EDGE PAVEMENT  
 S.L.M. 0+00



Grid: Northing: 674719.203 Easting: 1718034.044

RECORD:  
 FD P.K.NAIL  
 10/28/91  
 FD P.K.NAIL  
 GPS, REF12  
 1/10/12, 12/14/12  
 P.K.NAIL NOT  
 DISTURBED  
 8/22/14, EBW



O.D.O.T. DISTRICT 2 SURVEY OFFICE

PERSONNEL \_\_\_\_\_

REFERENCE NO. 1

SHEET 1 OF 6

NOTES RIPPLE

DATE 10/28/91

ROUTE SR 163

H.C. CHENEY

WEATHER CLOUDY

COUNTY OTTAWA

R.C. GEYMAN

TEMP. +68°

TOWNSHIP CLAY

SECTION 6

T 6 N R 13 E

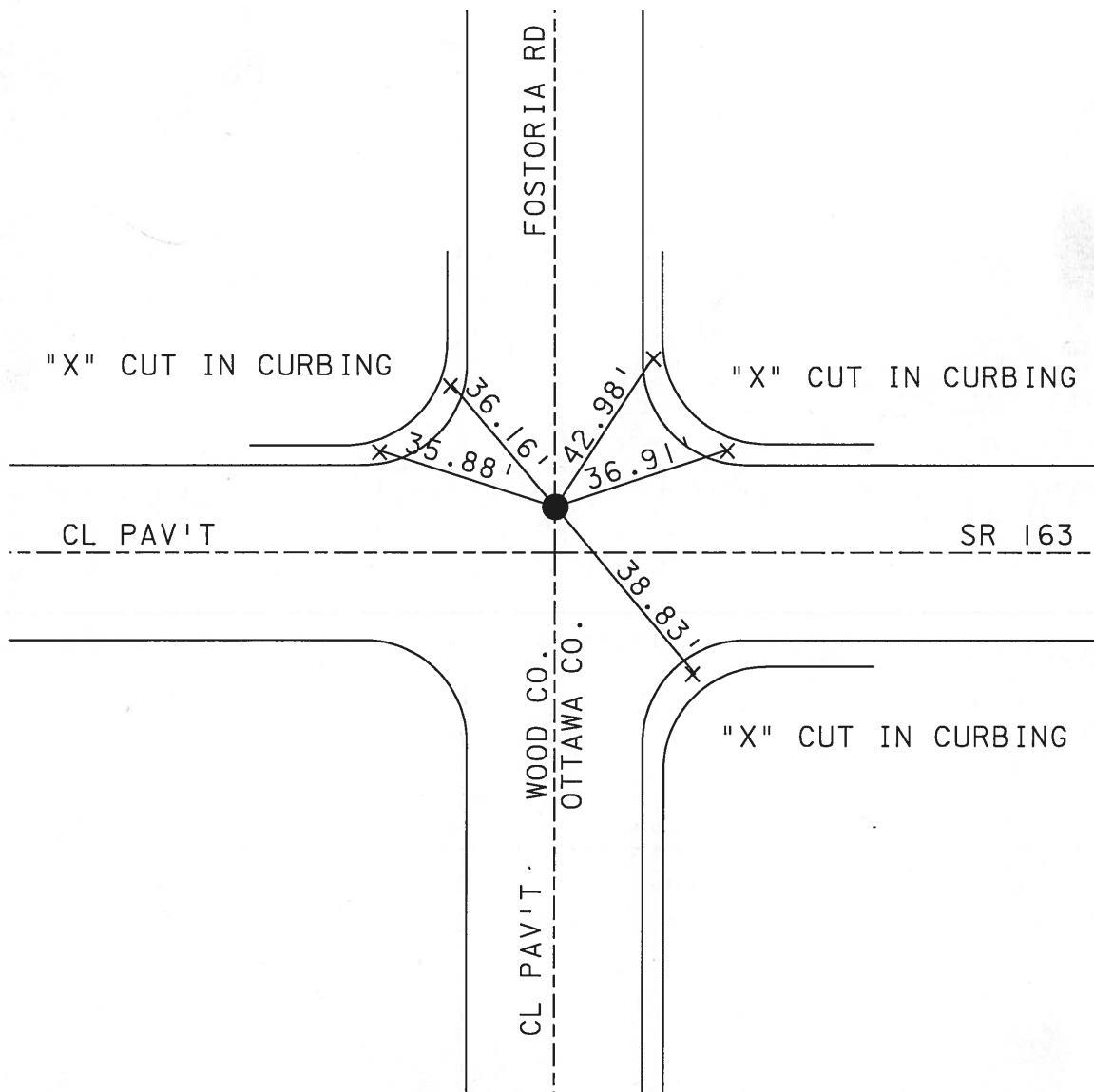
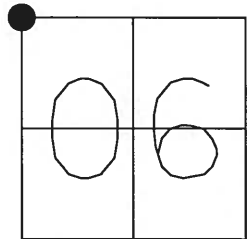
TYPE MONUMENT PK NAIL

ON SURFACE - ~~BELOW~~ YES

LEFT - Q PAV'T - ~~RIGHT~~ 4.2'

8.0' TO LT EDGE PAVEMENT

S.L.M. 0+00



2003 - Road Re-located - New monuments set

# O.D.O.T. DISTRICT 2 SURVEY OFFICE

PERSONNEL

REFERENCE NO. 1

SHEET 1 OF 18

NOTES RIPPLE

H.C. Cheney

R.C. Geyman

DATE 10/28/91

WEATHER Cloudy-Windy

TEMP. 68°

ROUTE SR# 163

COUNTY OTTAWA

TOWNSHIP CLAY

SECTION 31 & 6

T6E7 N R 13 E

TYPE MONUMENT P.K. Nail

ON SURFACE - ~~BELOW~~

LEFT- & PAV'T. - ~~RIGHT~~ 4.2'

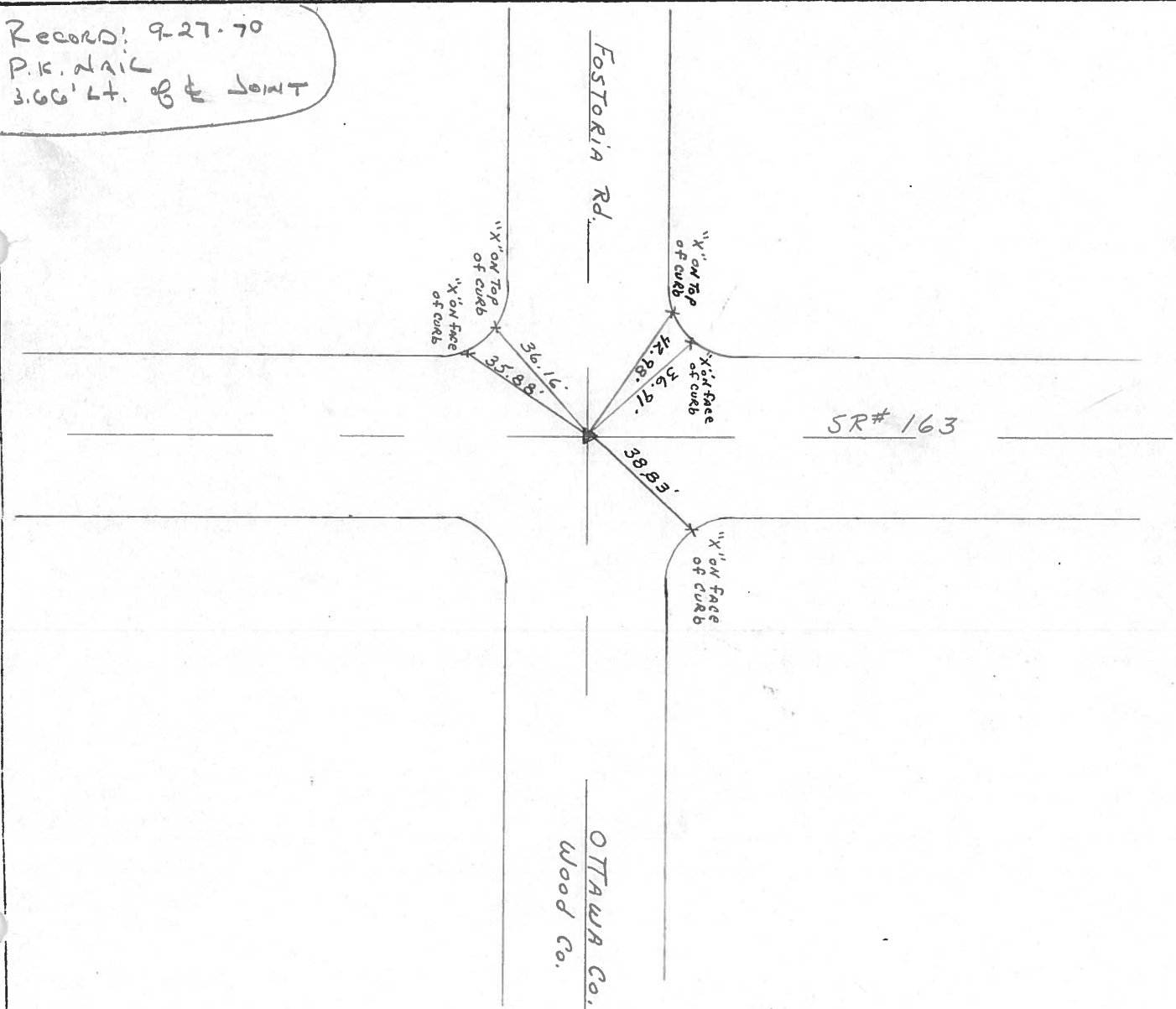
8.0' TO LT. EDGE PAVEMENT

S.L.M. 0+00

31	32
6	5



Record: 9-27-70  
 P.K. NAIL  
 3.66' Lt. of Joint



O.D.O.T. DISTRICT 2 SURVEY OFFICE

PERSONNEL \_\_\_\_\_

REFERENCE NO. \_\_\_\_\_

SHEET 1 OF 18

NOTES RIPPLE

H.C. BARbour

R.C. GeyMAN

DATE \_\_\_\_\_

WEATHER \_\_\_\_\_

TEMP. \_\_\_\_\_

ROUTE #163

COUNTY OTTAWA

TOWNSHIP CLAY

SECTION 31 & 6

T. 6 N. R. 13 E

TYPE MONUMENT \_\_\_\_\_

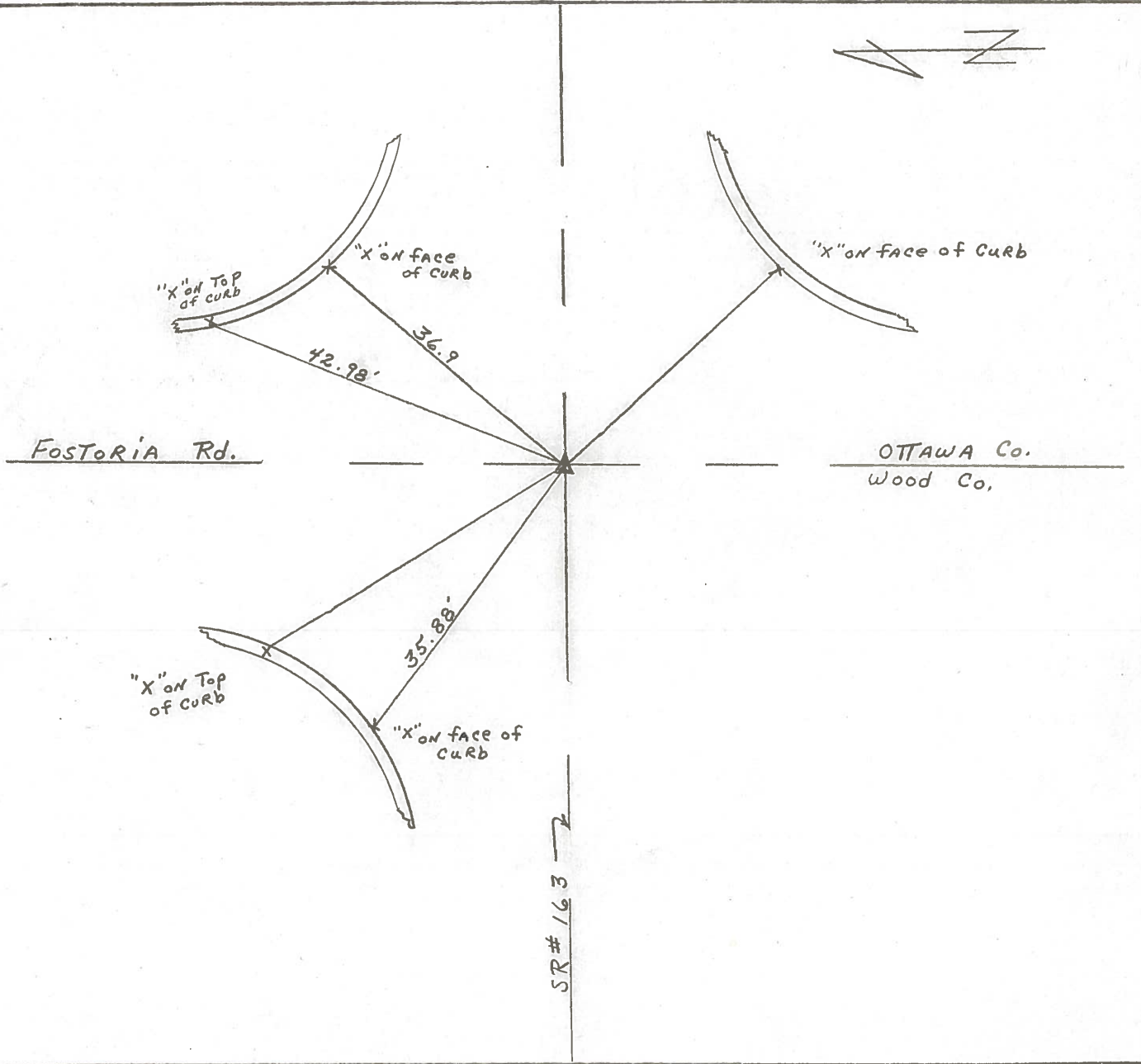
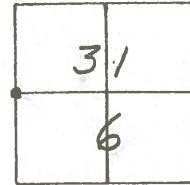
ON SURFACE - BELOW \_\_\_\_\_

LEFT - & PAV'T. - RIGHT \_\_\_\_\_

TO \_\_\_\_\_ EDGE PAVEMENT

S.L.M. 0+00

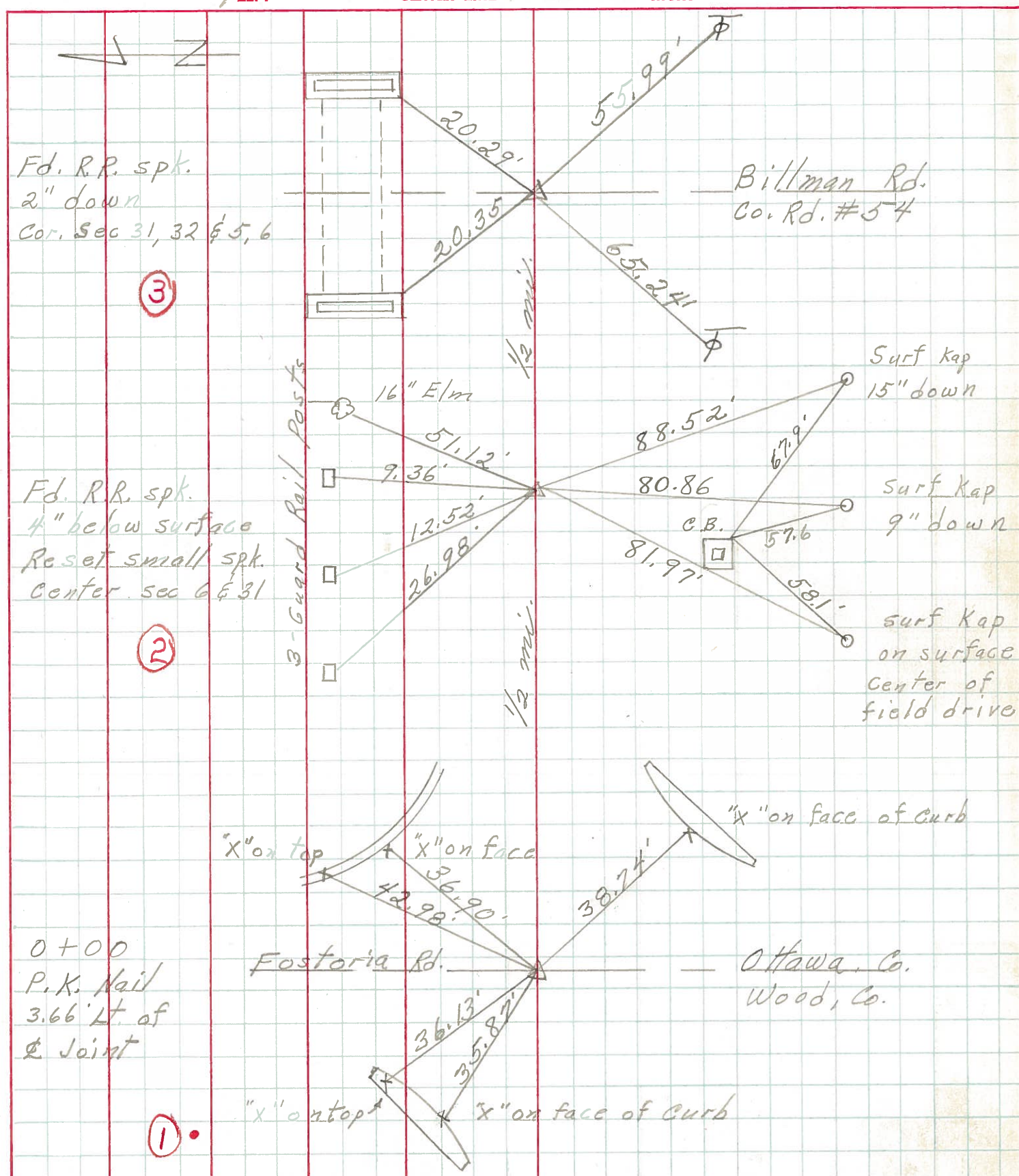
①



PERSONNEL TITLE PERSONNEL TITLE  
 Schneider \_\_\_\_\_  
 Mosser \_\_\_\_\_  
 Barbour \_\_\_\_\_  
 Geyman \_\_\_\_\_

COUNTY Ottawa DATE 9-27-70  
 S. R. 163 WEATHER cloudy  
 SEC. 6 & 31 TEMP. 50°

DESCRIPTION Clay Twp. JOB NO. \_\_\_\_\_



PERSONNEL TITLE PERSONNEL TITLE

Schneider \_\_\_\_\_

Mosser \_\_\_\_\_

Barbour \_\_\_\_\_

Potts \_\_\_\_\_

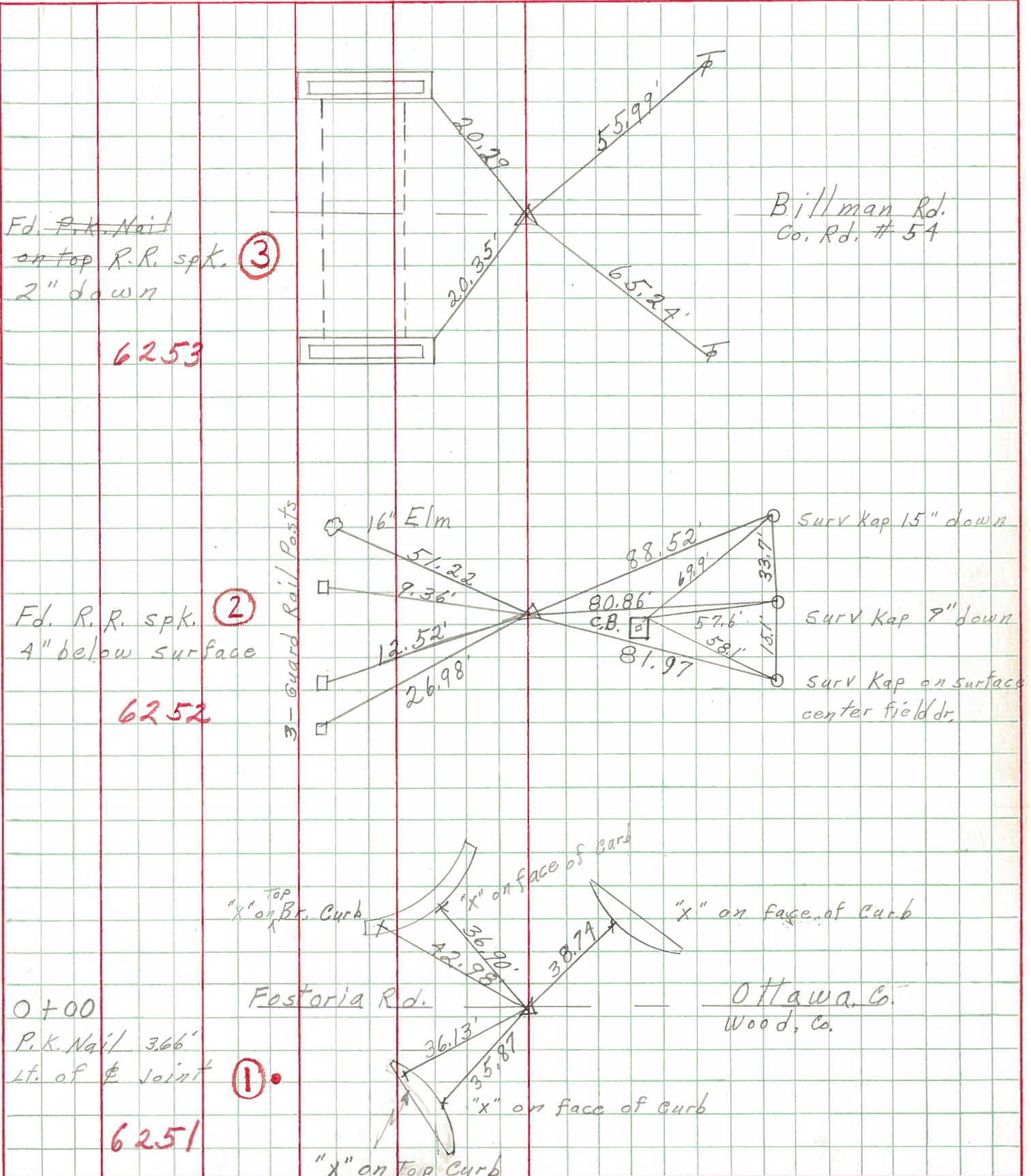
COUNTY Ottawa DATE 5-17-68

S. R. 163 WEATHER Cloudy

SEC. Wood Co. Lins-East TEMP. 50°

DESCRIPTION Ties for Control Points JOB NO. \_\_\_\_\_

LEFT CENTER LINE RIGHT



6253

6252

6251

③

②

①

Fd. R. R. Nail on top R. R. spk. 2" down

Fd. R. R. spk. 4" below surface

0+00 P.K. Nail 366' Lt. of Joint

Billman Rd. Co. Rd. # 54

Surv Kap 15" down

Surv Kap 9" down

Surv Kap on surface center field dr.

"x" on Br. Curb "x" on face of curb "x" on face of curb

Fosteria Rd. Ottawa Co. Wood, Co.

"x" on top curb "x" on face of curb